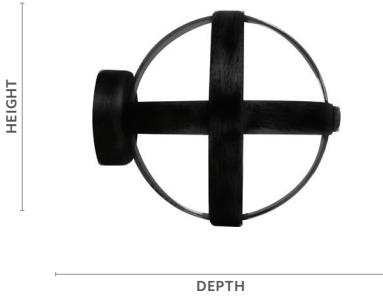


1" Finials & Endcaps

Axiom



Fits	Dimensions
1" Wrought Iron Poles	Depth: 3¼" Height: 2⅞" Width: 2⅞"

Product Number & Finish					
56381770	Black	56381804	Graphite	56381802	Iron Oxide
56381803	Chalk	56381805	Heirloom Copper	56381777	Rust

Finial Plugs included.

Darby



Fits	Dimensions
1" Wrought Iron Poles	Depth: 2⅞" Height: 1½" Width: 1½"

Product Number & Finish					
56384770	Black	56384804	Graphite	56384802	Iron Oxide
56384803	Chalk	56384805	Heirloom Copper	56384777	Rust

Finial Plugs included.

Lincoln



Fits	Dimensions
1" Wrought Iron Poles	Depth: 2¼" Height: 1⅞" Width: 1⅞"

Product Number & Finish					
56383770	Black	56383804	Graphite	56383802	Iron Oxide
56383803	Chalk	56383805	Heirloom Copper	56383777	Rust

Finial Plugs included.

Otto



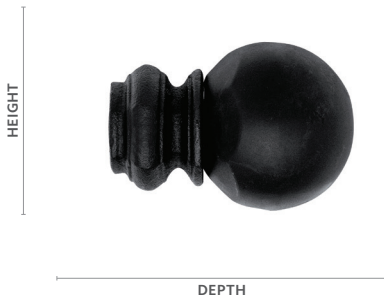
Fits	Dimensions
1" Wrought Iron Poles	Depth: 2⅞" Height: 2⅞" Width: 2⅞"

Product Number & Finish					
56382770	Black	56382804	Graphite	56382802	Iron Oxide
56382803	Chalk	56382805	Heirloom Copper	56382777	Rust

Finial Plugs included.

1" Finials & Endcaps

Pedestal Ball



Fits	Dimensions
1" Wrought Iron Poles	Depth: 4 $\frac{1}{8}$ " Height: 2 $\frac{7}{8}$ " Width: 2 $\frac{7}{8}$ "

Product Number & Finish					
56351770	Black	56351804	Graphite	56351802	Iron Oxide
56351803	Chalk	56351805	Heirloom Copper	56351777	Rust

Finial Plugs included.

Petite Faucet



Fits	Dimensions
1" Wrought Iron Poles	Depth: 1 $\frac{3}{4}$ " Height: 1 $\frac{3}{4}$ " Width: 1 $\frac{3}{4}$ "

Product Number & Finish					
56374770	Black	56374804	Graphite	56374802	Iron Oxide
56374803	Chalk	56374805	Heirloom Copper	56374777	Rust

Finial Plugs included.



1 $\frac{3}{8}$ " Otto | Black
1" Otto | Rust

1" Finials & Endcaps

Petite Modern Ball



Fits	Dimensions
1" Wrought Iron Poles	Depth: 2" Height: 1¾" Width: 1¾"

Product Number & Finish					
56373770	Black	56373804	Graphite	56373802	Iron Oxide
56373803	Chalk	56373805	Heirloom Copper	56373777	Rust

Finial Plugs included.

Ponce



Fits	Dimensions
1" Wrought Iron Poles	Depth: 4 ¹³ / ₁₆ " Height: 1½" Width: 1½"

Product Number & Finish					
56385770	Black	56385804	Graphite	56385802	Iron Oxide
56385803	Chalk	56385805	Heirloom Copper	56385777	Rust

Finial Plugs included.

Endcap



Fits	Dimensions
1" Wrought Iron Poles	Depth: 7/8" Height: 1 1/8" Width: 1 1/8"

Product Number & Finish					
56358770	Black	56358804	Graphite	56358802	Iron Oxide
56358803	Chalk	56358805	Heirloom Copper	56358777	Rust

Finial Plugs included.

1" Poles

6' Pole



Diameter		Length	
1"		6'	

Product Number & Finish					
56359770	Black	56359804	Graphite	56359802	Iron Oxide
56359803	Chalk	56359805	Heirloom Copper	56359777	Rust

7' 9" Pole



Diameter		Length	
1"		7' 9"	

Product Number & Finish					
56360770	Black	56360804	Graphite	56360802	Iron Oxide
56360803	Chalk	56360805	Heirloom Copper	56360777	Rust

1" Rings

Ring

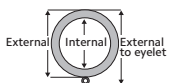


Fits		Dimensions		
1" Wrought Iron Poles		Internal: 1½"		
		External: 2½"		
		External to eyelet: 2¾"		7 rings per bag
Product Number & Finish				
56361770	Black	56361804	Graphite	56361802 Iron Oxide
56361803	Chalk	56361805	Heirloom Copper	56361777 Rust

Bypass C-Ring



Fits		Dimensions		
1" Wrought Iron Poles		Internal: 1½"		
		External: 2½"		
		External to eyelet: 2¾"		7 rings per bag
Product Number & Finish				
56371770	Black	56371804	Graphite	56371802 Iron Oxide
56371803	Chalk	56371805	Heirloom Copper	56371777 Rust



Use the measurement guide to the left to help determine the correct dimensions for your selected product.

1" Brackets

3½" Return Bracket



Fits		Dimensions			
1" Wrought Iron Poles		Depth: 4¼"	Height: 4"	Width: ⅝"	Wall to Pole: 3" Return: 3½"
Product Number & Finish					
56362770	Black	56362804	Graphite	56362802	Iron Oxide
56362803	Chalk	56362805	Heirloom Copper	56362777	Rust

5⅜" Return Bracket



Fits		Dimensions			
1" Wrought Iron Poles		Depth: 6¼"	Height: 4¼"	Width: ⅝"	Wall to Pole: 4⅞" Return: 5⅜"
Product Number & Finish					
56363770	Black	56363804	Graphite	56363802	Iron Oxide
56363803	Chalk	56363805	Heirloom Copper	56363777	Rust

Center Bypass Bracket



Fits		Dimensions			
1" Wrought Iron Poles		Depth: 4¼"	Height: 4"	Width: ⅝"	Wall to Pole: 3" Return: 3½"
Product Number & Finish					
56372770	Black	56372804	Graphite	56372802	Iron Oxide
56372803	Chalk	56372805	Heirloom Copper	56372777	Rust

Double Bracket



Fits		Dimensions			
1" Wrought Iron Poles		Depth: 7½"	Height: 5⅝"	Width: ⅝"	Wall to Pole: 3" Inner Return: 3½" Outer Return: 6½"
Product Number & Finish					
56365770	Black	56365804	Graphite	56365802	Iron Oxide
56365803	Chalk	56365805	Heirloom Copper	56365777	Rust

1" Brackets, Accessories & Components

Inside Mount Socket



Fits	Dimensions
1" Wrought Iron Poles	Depth: 1" Height: 2" Width: 2"

Product Number & Finish					
56370770	Black	56370804	Graphite	56370802	Iron Oxide
56370803	Chalk	56370805	Heirloom Copper	56370805	Rust

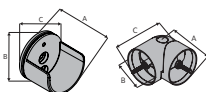
Mounts a 1" rod between two facing walls.

Swivel Socket



Fits	Dimensions
1" Wrought Iron Poles	Partial Length: 1 5/8" Plug Length: 7/8" Full Length: 2 1/2"

Product Number & Finish					
56367770	Black	56367804	Graphite	56367802	Iron Oxide
56367803	Chalk	56367805	Heirloom Copper	56367777	Rust



Use the measurement guide to the left to help determine the correct dimensions for your selected product.

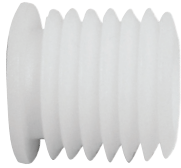
1" Accessories & Components

36" Baton with Bypass C-Ring



Fits		Dimensions			
1" Wrought Iron Poles		36" long			
Product Number & Finish					
56375770	Black	56375804	Graphite	56375802	Iron Oxide
56375803	Chalk	56375805	Heirloom Copper	56375777	Rust

Finial Plug



Fits	
1" Wrought Iron Poles	
Product Number & Finish	
56369058	White

Internal Rod Splice



Fits	
1" Wrought Iron Poles	
Product Number & Finish	
56366061	Zinc Plated

Connects two poles together for larger width options.



Kirsch[®] is proud to extend a 10 year warranty on all Kirsch[®] Drapery Hardware products manufactured after July 1, 2018 using all Kirsch[®] components. This is part of our commitment to providing the highest quality products, which has been our continued tradition since 1907.

COVERED

by a 10 year warranty

- Kirsch[®] Drapery Hardware products are covered for defects in materials, workmanship or failure to operate for as long as the original retail purchaser owns the products (unless shorter periods are provided below).
- All internal mechanisms.
- Components and brackets.
- Operational cords for a full 7 years from the date of purchase.
- Repairs and/or replacements will be made with like or similar parts or products.
- Kirsch[®] motorization components are covered for 5 years from the date of purchase.

NOT COVERED

by a 10 year warranty

- Any conditions caused by normal wear and tear.
- Abuse, accidents, misuse or alterations to the product.
- Exposure to the elements (sun damage, wind, water/moisture, salt air) and discoloration or fading over time.
- Failure to follow our instructions with respect to measurement, proper installation, cleaning or maintenance.
- Shipping charges, cost of removal and reinstallation.

Kirsch[®] (or its licensed fabricators/distributor) will repair or replace the product or components found to be defective.

TO OBTAIN WARRANTY SERVICE

- Contact your original dealer (place of purchase) for warranty assistance.
- Contact Kirsch[®] at (800) 252-2512 for technical support, certain parts free of charge, for assistance in obtaining warranty service or for further explanation of our warranty.

NOTE: In no event shall Kirsch[®] or its licensed fabricators/distributor be liable or responsible for incidental or consequential damages or for any other indirect damage, loss, cost or expense. Some states do not allow the exclusion or limitation of incidental or consequential damages, so the above exclusion or limitation may not apply to you. This warranty gives you specific legal rights, and you may also have other rights which vary from state to state.

Different warranty periods and terms apply for commercial products and applications.