



**NGALA**  
TRADING

## WOVEN DINING TABLE

The Woven Dining Table contrasts modern design concepts with traditional hand weaving techniques.

The fibrecane, produced in South Africa, has the appearance of wicker furniture, but unlike the latter is able to withstand exposure to the elements - sun and rain.

The Woven Dining Table comes standard with a powder-coated mild steel frame. It is best to upgrade to a powder-coated stainless steel frame for longer outdoor durability and coastal environments.

### MATERIALS AND CONSTRUCTION

Stainless steel OR Mild steel  
Fibrecane weaving

### DIMENSIONS

55" Dia. x 30.75" H

### FIBRECANE SPECIFICATION

Composition: 100% Recycled Plastic  
*Weatherproof*

### MANUFACTURER

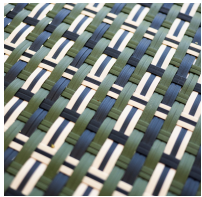


[NGALATRADING.COM](http://NGALATRADING.COM)





## COLOR OPTIONS



Palm  
Base powercoated  
in 'Amaraula'

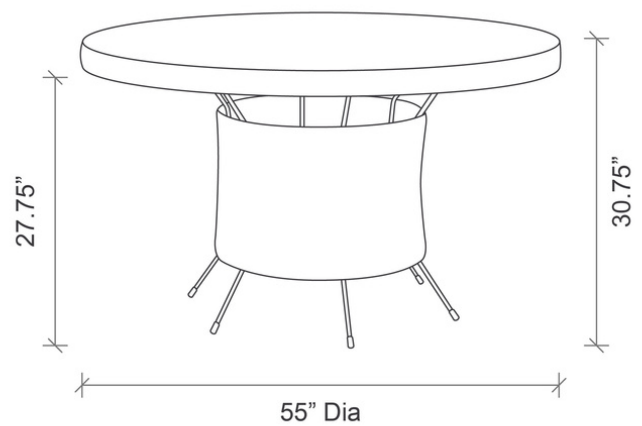


Spice  
Base powercoated  
in 'Spice'



## SPECS

55" DIA X 30.75" H  
CLEARANCE: 27.75"



### SHIPPING AND DELIVERY

- Back-order / Special-order items available for domestic shipping 12-14 weeks from receipt of deposit
- Ships via Motor freight

### INSTALLATION AND CARE

- Suitable for outdoor use
- Stainless steel option recommended for coastal environments; mild steel option recommended for inland environments

### WARRANTY

- Fibrecane: Two year warranty against fading, cracking and peeling.
- Stainless Steel Frame: Two year limited warranty against rusting, provided the frame has not been misused or abused.
- *Douglas & Douglas and Ngala Trading reserve the right to inspect the frame submitted for claim and will either repair or replace the frame*