



NGALA
TRADING

TURTLE MIRROR

Inspired by nature, the Tortoise Mirror draws on the recurring geometric shapes in a tortoise shell. Each frame is handcrafted from locally-sourced, vegetable tanned leather that has been hand-embossed and hand-painted. Subtle solid brass accents add a touch of modern luxury to this large statement mirror suitable for an entryway, dining room, living room or bedroom.

MATERIALS AND CONSTRUCTION

Hand embossed leather
Polished stainless steel or brass
Mirror

DIMENSIONS

51" W x 59" H.

REFLECTION AREA

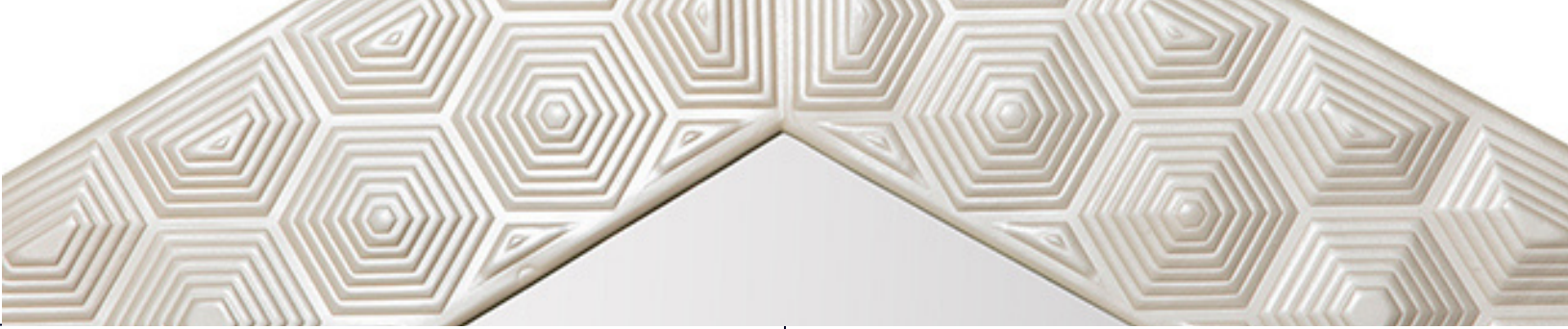
41" W x 47" H

WEIGHT

Approximately 30 LBS

MANUFACTURER





LEATHER COLORS



Black



Bone



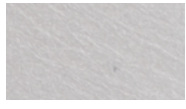
Grey



Pearl



Gold



Silver



Leaf



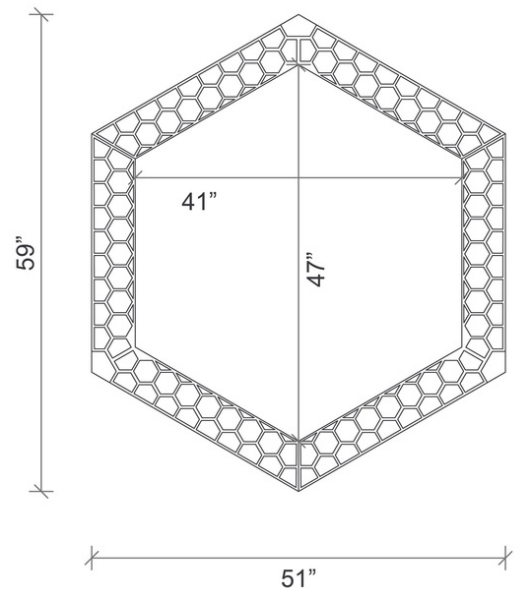
Teal

Clarisse Design uses only full-grain, vegetable tanned leathers in the production of their handcrafted designs. This specific type of leather has been chosen for its physical attributes of thickness, durability and the ability to be shaped.

A full-grain piece of leather has the entire grain visible on one side. Except for the removal of the hair, the surface remains untouched. Natural imperfections like scars, blemishes, insect bites, branding and stretch marks may be present in this leather. These natural imperfections should not be regarded as defects and are a feature of this first-quality leather.

SPECS

51" W X 59" H



SHIPPING AND DELIVERY

- Durably wrapped and boxed
- Back-order / Special-order items available for domestic shipping 12-14 weeks from receipt of deposit
- Ships via motor freight

INSTALLATION AND CARE

- Mirror includes cleat style hanging mechanism
- Leather is a natural product and is therefore susceptible to fading if exposed to direct sunlight or moisture.
- Refer to installation instructions for full details.