



NGALA
TRADING

THANDA TORTOISE VELVET FABRIC

Available in two colorways, silver and plum, Thanda Tortoise is an interpretation of the leopard tortoises' shell and their instinct to retract into their safe home, shielded from outside harm.

This vibrant and detailed Ardmore Design print has been digitally printed onto a white base cloth.

FABRIC COMPOSITION

66% Cotton; 31% Viscose; 3% Polyester

FABRIC WIDTH

55.1"

PRINT WIDTH

53.9"

VERTICAL PATTERN REPEAT

11"

HORIZONTAL PATTERN REPEAT

6.8"

MARTINDALE RUB

40,000

MANUFACTURER

a | Ardmore

FIRE RATING

CAL 117 Compliant

CARE

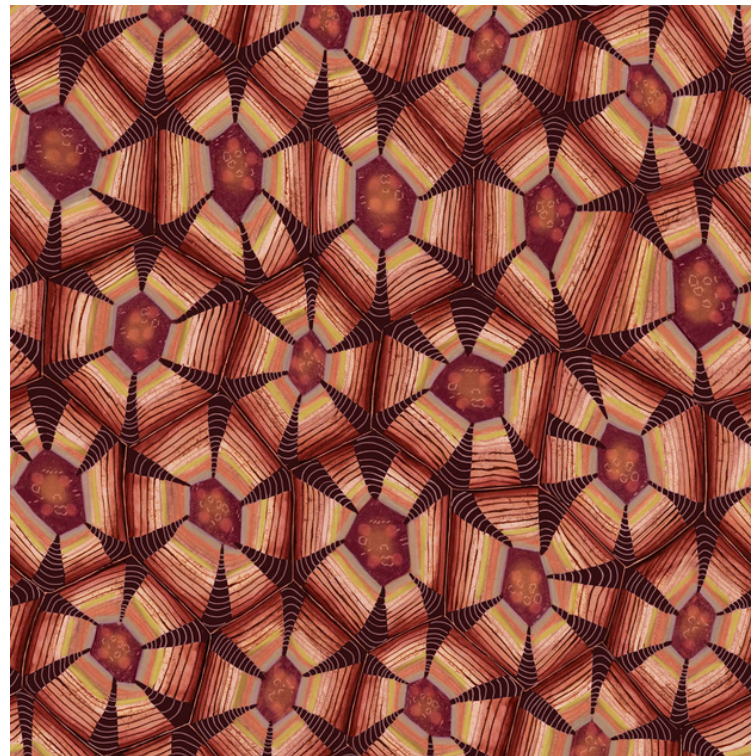
Indoor use only

Do not place in direct sunlight

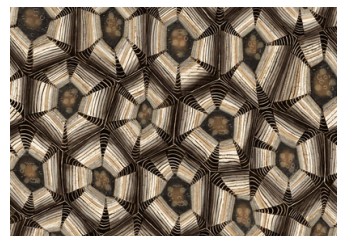
Remove soft creases with a light steam and/or cool iron for back of fabric

Velvet pile can be brushed using a soft cloth in the direction of the pile

Dry clean only



Plum



Silver