



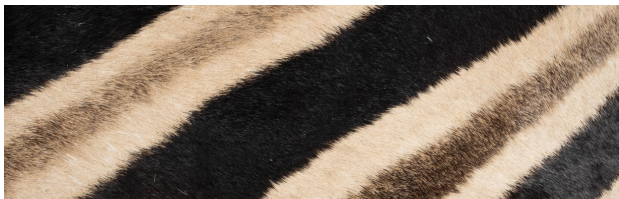
NGALA  
TRADING

## NATURAL MATERIALS

*zebra hide*

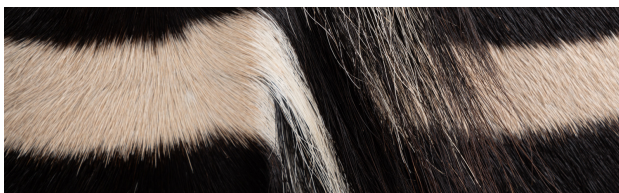
Everything about our products - from style to materials to the craftspeople who make them - is distinctly and truly African. Due to the nature of the production methods and the use of natural materials, there may be slight variations in the Zebra Hide piece you receive. We believe these natural variations enhance the authenticity of each item.

There are varying qualities in hides and Ngala Trading uses 'A Grade' Burchell Zebra hides for our collection. Please keep in mind that our pieces handcrafted in Zebra Hide will have unique, natural characteristics. Below are some common natural markings found on the hides. These markings are not defects but rather proof that a natural material was used.



### Pattern & Coloring

Like a human fingerprint, no two sets of zebra stripes are the same. Burchell Zebras tend to be more creamy and brown and less black and white due to the Savannah of Southern Africa.



### Mane

The amount of mane and direction of the hair in the mane will differ on each hide.



### Scars

Healed scars are the result of the animal's unsheltered life and evidence that the hide is genuine.



### Hair Loss

There may be small areas that show natural hair loss by the animal.



NGALA  
TRADING

## CARE INSTRUCTIONS

### *zebra hide*

---



One of the most common questions asked about zebra hide products is how to clean them. Products made from hide are easy to maintain with a simple broom, brush or lint roller.

All zebra hides are naturally resistant to stain and discoloration. The natural oils in the hide also help to keep major spills "pooled" and a quick response time can eliminate a stain.

- Regularly brush your zebra hide with a soft bristled broom - always 'with the grain of the hair'
- Vacuuming is not recommended
- Using a mild shampoo or hide cleaner, spot clean with a lightly damp sponge or cloth gently rubbing in the direction of the hair
- DO NOT excessively soak the hide or it will dry out
- Avoid heavy exposure to sunlight - this can dry out the hide as with other leather items
- If felted, the backing can be cleaned with a lint brush