



NGALA

TRADING

MONKEY BEAN LINEN FABRIC

Mischievous monkey's play and hide amongst the Lucky Bean trees in this elegant design. Africa's beautiful coral trees, also known as Lucky Bean trees, are valuable plants to the ecosystem, providing food and shelter for a variety of birds, animals and insects. These trees are also buried on the graves of Zulu chiefs and are associated with magic in the Zulu culture.

This vibrant and detailed Ardmore Design print has been digitally printed onto a bleached base cloth.

FABRIC COMPOSITION

70% Linen; 30% Viscose,

FABRIC WIDTH

55.1"

PRINT WIDTH

53.9"

VERTICAL PATTERN REPEAT

30"

HORIZONTAL PATTERN REPEAT

55"

MARTINDALE RUB

20,000

MANUFACTURER

a | Ardmore

FIRE RATING

CAL 117 Compliant

CARE

Indoor use only

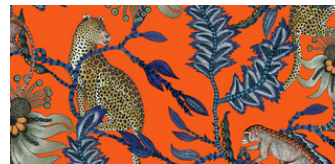
Do not place in direct sunlight

Remove soft creases with a light steam and/or cool iron

Dry clean only



Ash



Flame



Night



Tanzanite



Stone



Parakeet