



**CARON**<sup>®</sup>  
soften your world

Subscribe to Caron Connections, our free e-newsletter.

Enter your e-mail address

subscribe

[yarn](#) [free projects](#) [where to buy](#) [links](#) [learning](#) [contact us](#) [caron connections](#) [news](#) [latch hook](#)

#### Caron Yarns

##### Simply Soft<sup>®</sup>

Simply Soft<sup>®</sup> Baby **NEW**

Simply Soft<sup>®</sup> Brites

Simply Soft<sup>®</sup> Heather

##### NEW

Simply Soft<sup>®</sup> Quick

Simply Soft<sup>®</sup> Tweed

Simply Soft<sup>®</sup> Shadows

##### Bliss<sup>®</sup>

Craft & Rug Yarn **NEW**

##### Felt-It

##### Fling

##### Glimmer

##### Natura<sup>®</sup>

##### One Pound

##### Perfect Match<sup>®</sup>

##### Pizazz<sup>®</sup>

##### Wintuk<sup>®</sup>

#### Caron Latch Hook Kits

##### Shaggy

##### Caron<sup>®</sup> Classics

##### Natura<sup>®</sup>

##### WonderArt<sup>®</sup>

##### Kraffy Kids<sup>™</sup>

##### Christmas designs

shop  
online

Buy all your favorite

Caron products online

## Boy's Fair Isle Sweater

with

**SIMPLY SOFT**

designed by Marilyn Losee

**TECHNIQUE USED:** Knit



#### SIZES

X-Small (Small, Medium, Large, X-Large)

To fit Child's 2 (4, 6, 8, 10)

#### FINISHED MEASUREMENTS

Chest 24 (26, 28, 30, 32)"/61 (66, 71, 76, 81) cm

Length 13 (14, 15, 16, 17)"/33 (35.5, 38, 40.5, 43) cm

#### MATERIALS

[Caron International's Simply Soft](#) (100% acrylic; 6 oz/170 g, 315 yds/288 m skein): 1 (2, 2, 3, 3) skeins MC; 1 skein each A and B

**Shown in:** #9730 Autumn Red (MC); #9703 Bone (A); #9750 Chocolate (B)

One pair each size US 5 and 8 (3.75 and 5 mm) needles or size to obtain gauge

One circular needle size US 5 (3.75 mm), 16" long

Stitch markers

Stitch holders

Yarn Needle

Row counter (optional)

Bobbins (optional)



click to enlarge image

schematic

 **Printer Friendly PDF**

**GAUGE**

In Stockinette stitch, 18 sts and 24 rows = 4"/10 cm, using larger needles

**SPECIAL TECHNIQUES**

**Fair Isle (Stranded) Technique:** Carry color not in use loosely across WS of work.

**3-Needle Bind Off** (Joining 2 pieces together as you bind off.)

Place the stitches of the pieces to be joined on separate needles, (or each end of a circular needle), held one behind the other with right-sides facing each other, in left hand; with a third needle, (the same size or 1 size larger than used for knitting the pieces), k2tog [1 from the front needle, 1 from the back needle—1 stitch on right-hand needle], \*K2tog [2 stitches on right-hand needle], bind off 1 stitch in usual manner; repeat from \* to end.

**STITCHES USED**

**Stockinette stitch (St st):** Knit on RS, purl on WS.

**Fair Isle Stripes** (see Chart)

**1 x 1 rib (multiple of 2 sts [+ 1 for rows])**

Row/Round 1 (RS): \* K1, p1; repeat from \* across, end k1 (rows).

Row/Round 2: Knit the knit sts and purl the purl sts as they face you.

Repeat Row/Round 2 for 1 x 1 rib.

**HELPFUL**

While working Fair Isle stripes from Chart, colors not in use may be carried loosely up side to avoid additional ends to weave in; or cut and re-joined as needed.

**BACK**

Using smaller needles and MC, cast on 55 (59, 65, 69, 73) sts.

(RS) Begin 1 x 1 rib; work even until piece measures 1 (1 1/4, 1 1/2, 1 1/2, 2)" from beginning, end with a WS row.

**Establish Pattern**

(RS) Change to larger needles and begin Chart; work even for 20 rows, end with a WS row; cut A and B.

(RS) Using MC only, work even until piece measures 13 (14, 15, 16, 17)" from beginning, end with a WS row; place a marker (pm) each side of center 27 (29, 33, 33, 33) sts for neck—14 (15, 16, 18, 20) sts each side for shoulders.

**Neck and Shoulders**

(RS) Using separate holders for each section, place shoulder sts and neck sts on holders.

**FRONT**

Work as for Back until piece measures 10 1/2 (11 1/2, 12, 13, 14)" from beginning of shaping, end with a WS row—55 (59, 65, 69, 73) sts; pm each side of center 13 (15, 17, 17, 17) sts for neck.

**Shape Neck**

(RS) Work across to first marker; place center (neck) sts on holder; join a

second ball of yarn and work to end—21 (22, 24, 26, 28) sts each side. Working both sides at same time, at each neck edge, dec 1 st every row 4 times, then every other row 3 (3, 4, 4, 4) times—14 (15, 16, 18, 20) sts remain for shoulders. Work even until piece measures same as Back to shoulder, end with a WS row. Place remaining sts on separate holders.

### SLEEVES

Using smaller needles and MC, cast on 23 (27, 27, 29) sts.

(RS) Begin 1 x 1 rib; work even until piece measures 1 1/2 (1 1/2, 1 1/2, 2, 2)" from beginning, inc 6 (6, 6, 8, 8) sts evenly across last (WS) row—29 (33, 33, 37, 37) sts.

#### Establish Pattern

(RS) Change to larger needles and begin Chart; work even for 4 rows, end with a WS row

#### Shape Sleeve

(RS) Continuing from Chart, work Rows 5 – 20, cut A and B; and AT THE SAME TIME, beginning this row, inc 1 st each side every 3 (4, 4, 4, 4) rows 13 (13, 15, 15, 18) times, working in MC only when Chart is completed—55 (59, 63, 67, 73) sts. Work even until piece measures 9 (11, 12, 13, 15)" from the beginning, end with a WS row.

Bind off remaining sts.

### FINISHING

Join shoulders using 3-Needle Bind-off Method.

#### Neckband

With RS facing, using circular needles and MC, pick up and knit 70 (74, 86, 86, 86) sts around neck edge, including sts on holders. Join and pm for beginning of round.

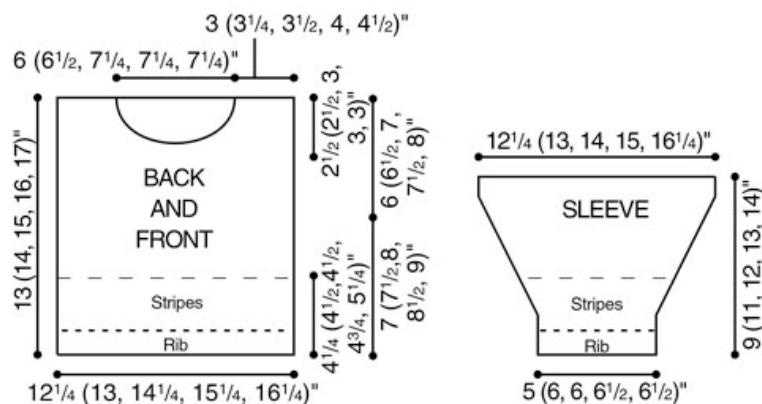
Begin 1 x 1 rib; work even until neck band measures 1 1/2" from pick-up round.

Bind off all sts loosely in pattern.

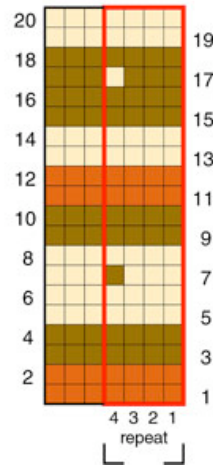
Measure down 6 (6 1/2, 7, 7 1/2, 8)" from shoulder seam, Back and Front and pm for underarm.

Sew Sleeves between markers; sew Sleeve and side seams.

Using yarn needle, weave in ends.



### FAIR ISLE CHART



### KEY

- Knit on RS, purl on WS
- Autumn Red (MC)
- Bone (A)
- Chocolate (B)

|| Yarns || Free Projects || Where to Buy || Links || Learning || Contact Us || Caron Connections || News ||  
Latch Hook ||

Visit Bond America online

©2007 Caron International