

BLITZ Hanger

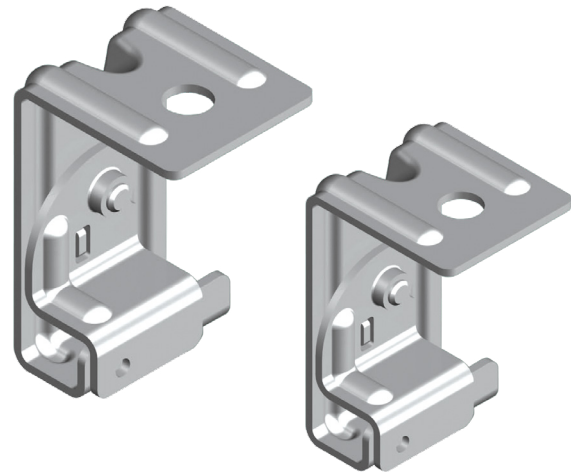
Load carrying capacity

BLITZ Laddertray hangers have been designed to support a static load of 60 kg per hanger, and 120kg for a pair. The load carrying capacity is applicable to both the LTH1 (suits ET3 and LT3) and LTH2 (suits Ezytray and ST3) hangers.

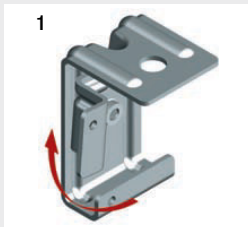
The rated load of BLITZ hangers is compatible with the maximum loading capacity of leading brand 45mm to 50mm sidewall Laddertray's when spanned at 3.0 metre between supports. According to published results from Laddertray manufacturers, the maximum load of a Laddertray when spanned at a 3.0 metre spacing is between 27kg and 35kg per metre.

Independently tested by a NATA certified laboratory, BLITZ hanger brackets have been rated to withstand the stated static load with a safety factor of 1.5.

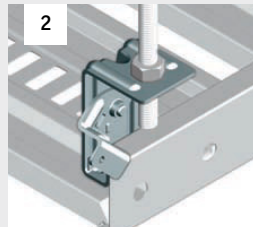
BLITZ does not warrant the actual performance of Laddertrays or Cable Ladders provided by third parties. Refer to Nema VE2 installation guidelines for optimum system performance.



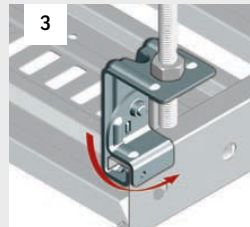
Guide to attaching Blitz Hanger to cable ladder.



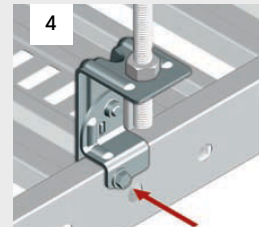
1
Rotate the retaining tab into the open (horizontal) position



2
Hook on the laddertray or cabletray



3
Rotate the tab back into the closed (vertical) position



4
Insert and tighten the locking screw

LT Hanger

A simple, easy and fast system for hanging cabletrays and laddertrays.

60KG SWL per hanger (M8 & M10 Rod)

120KG SWL per pair of hangers (M8 & M10 Rod) **3:1 SF**

Type	Suits	Qty per box	Weight	Zinc Plated	ArmorGalv®
L1	Burndy® LT3 EzyStrut® ET3	50 per Box	5.5kg	FCS-LTH1	FCS-LTH1G
L2	EzyStrut® Ezytray® Unistrut® Supatray	50 per Box	5.5kg	FCS-LTH2	FCS-LTH2G

Registered Trademarks:

BURNDY® is a registered trademark of Phoenix Steel Sales Pty Ltd.

UNISTRUT® is a registered trademark of Unistrut International Corporation.

EZYSTRUT® is a registered trademark of Korvest Ltd.