

MD Code Locations

[Wagons](#)

[Trikes](#)

[Bikes](#)

[Battery Op](#)

[Horses](#)

[Ride-Ons](#)

[Scooters](#)

[Accessories](#)

WAGONS

Model: Steel and Wood Wagons

Position: Underside of the body of the wagon, on the Warning Label



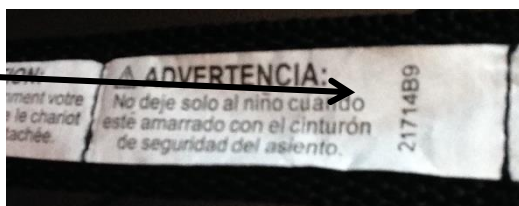
Model: All Plastic Wagons

Position: Handle, on the Warning Label

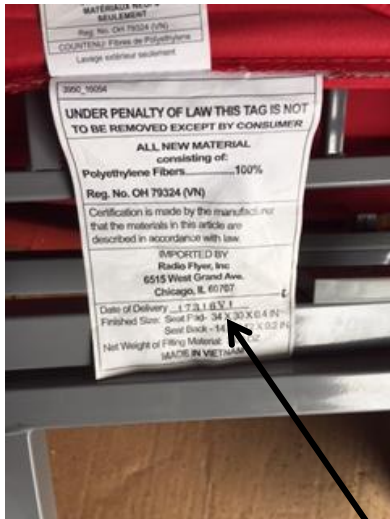


Model: Ultimate EZ Fold and EZ Fold Wagons

Position: Black Handle, on the Warning Label OR
Seat Belt Tag



- Model: 3-in-1 EZ Fold Wagons
- Position: Warning label on black handle OR white tag at back of wagon



- 3900, 90504
- UNDER PENALTY OF LAW THIS TAG IS NOT
TO BE REMOVED EXCEPT BY CONSUMER**
- ALL NEW MATERIAL**
consisting of:
Polyethylene Fibers.....100%
- Reg. No. OH 79324 (VN)**
- Certification is made by the manufacturer
that the materials in this article are
described in accordance with law
- IMPORTED BY**
Radio Flyer, Inc.
6515 West Grand Ave.
Chicago, IL 60637
- Date of Delivery **1/23/85**
Finished Size: **Seat P140-34 X 30 X 6.4 P2-**
Seat Back-14 X 30 X 6.4 P2
Net Weight of Filling Material
MADE IN VIETNAM



- Model: Convertible Stroller Wagon (3970Z), Odyssey Stroller Wagon (3971Z), Discovery Stroller Wagon (3972Z)
- Position: Lower right-hand side of push bar, on warning label



- Model: W1, W7A, W5
- Position: Underside of the body of the wagon



TRIKES

Model: 33(P), 34(B,G,P),34-150A,
34T(TP), 433

Position: Main frame on the
Warning Label

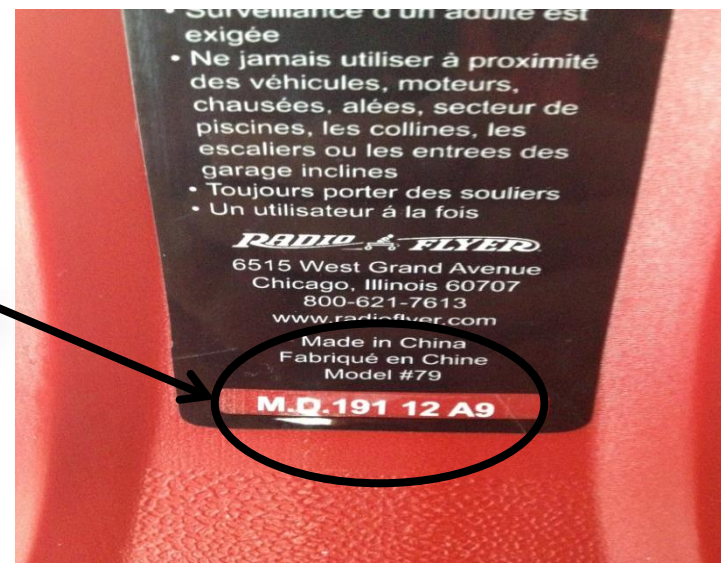


- Models: 21(P), 21T, 51V(TP), 53V (P), 66, 411(P), 412A, 414(P), 415(P), 416, 421Z/PZ, 451
- Position: Back of the seat on the Warning Label



Model: 79/79P, 474/474P, 479/479P

Position: On the frame, underneath handlebars



Models: 401, 402, 402P, 403, 403P, 470

Position: Back of the seat, on the Warning Label



2



Models: #443, 445, 446, 449, 456, 481/P, 483CZ, 484/P,
488

Position: Back of the Bucket Bin, on the Warning Label



Models: 418, 421

Position: Back of the Bucket Bin, on the Warning Label



Model: 447 and 448

Position: Side of seat back, on a sticker near the warning label



Model: 445 and 445P

Position: Side of the rear frame where push handle inserts, on the Warning Label



Models: 477 (P), 486, 487, 489, 491, 499, 809, 812, 811(P), 816, 817, 818

Position: Back of the frame, underneath the seat on the Warning Label

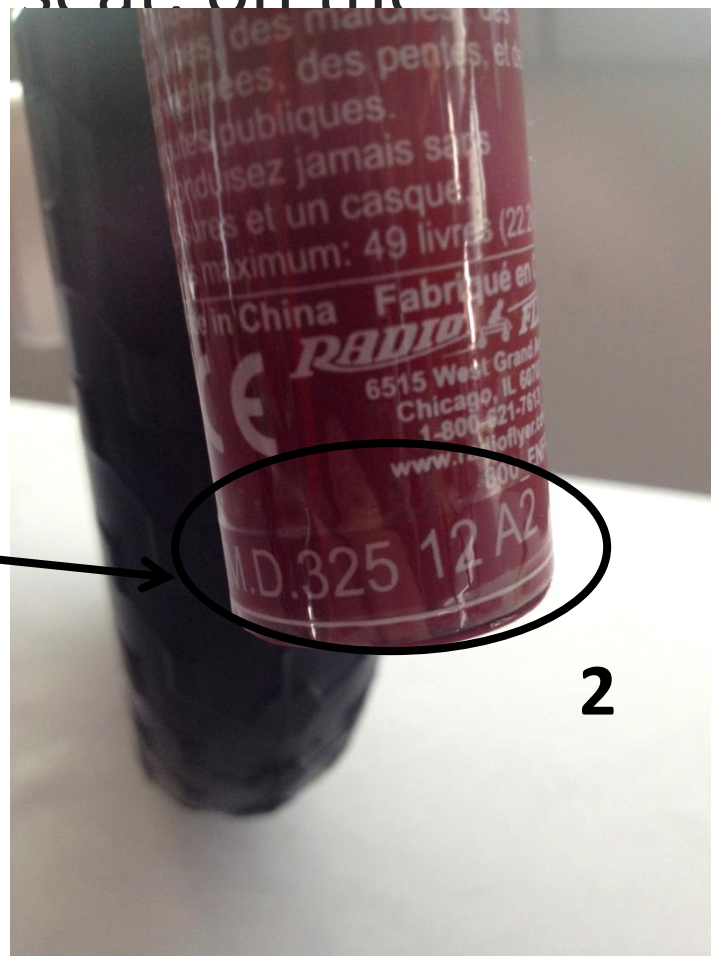


BIKES

Model: 800, 802, 803, 808

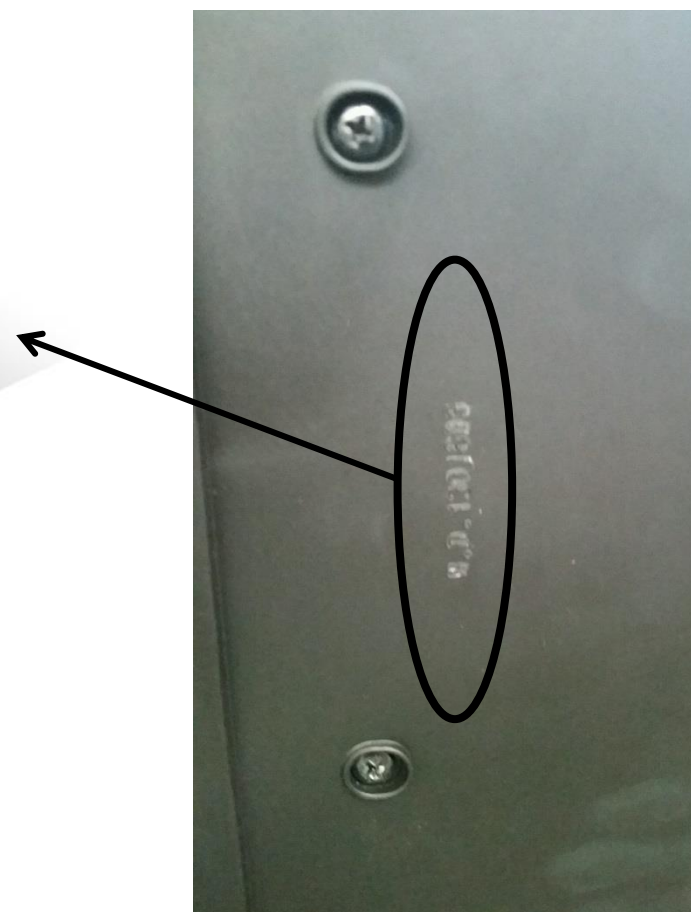
Position: Main frame below seat, on the

Weld



BATTERY OP

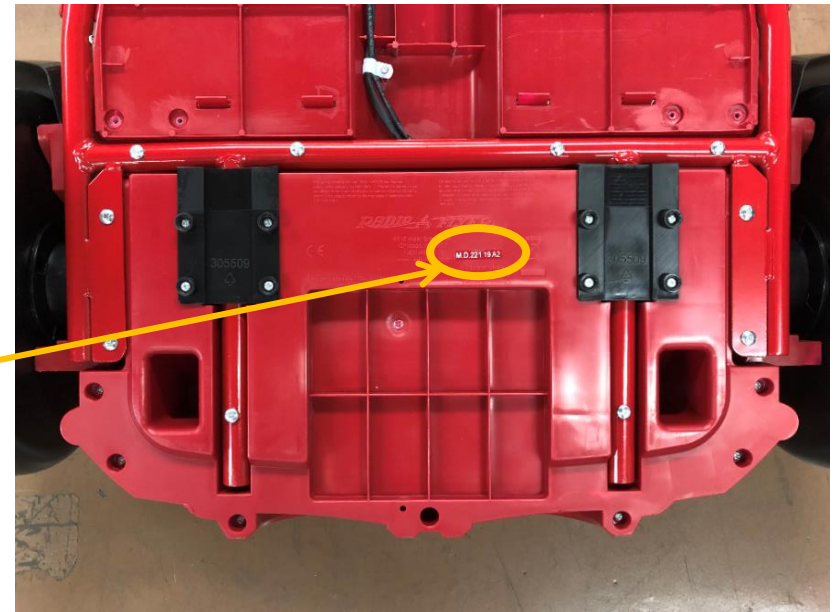
- Model 910
- Position: Stamped on the underside of bumper



- Model 940 Ultimate Go-Kart
- Position: On a sticker on the underside of the body



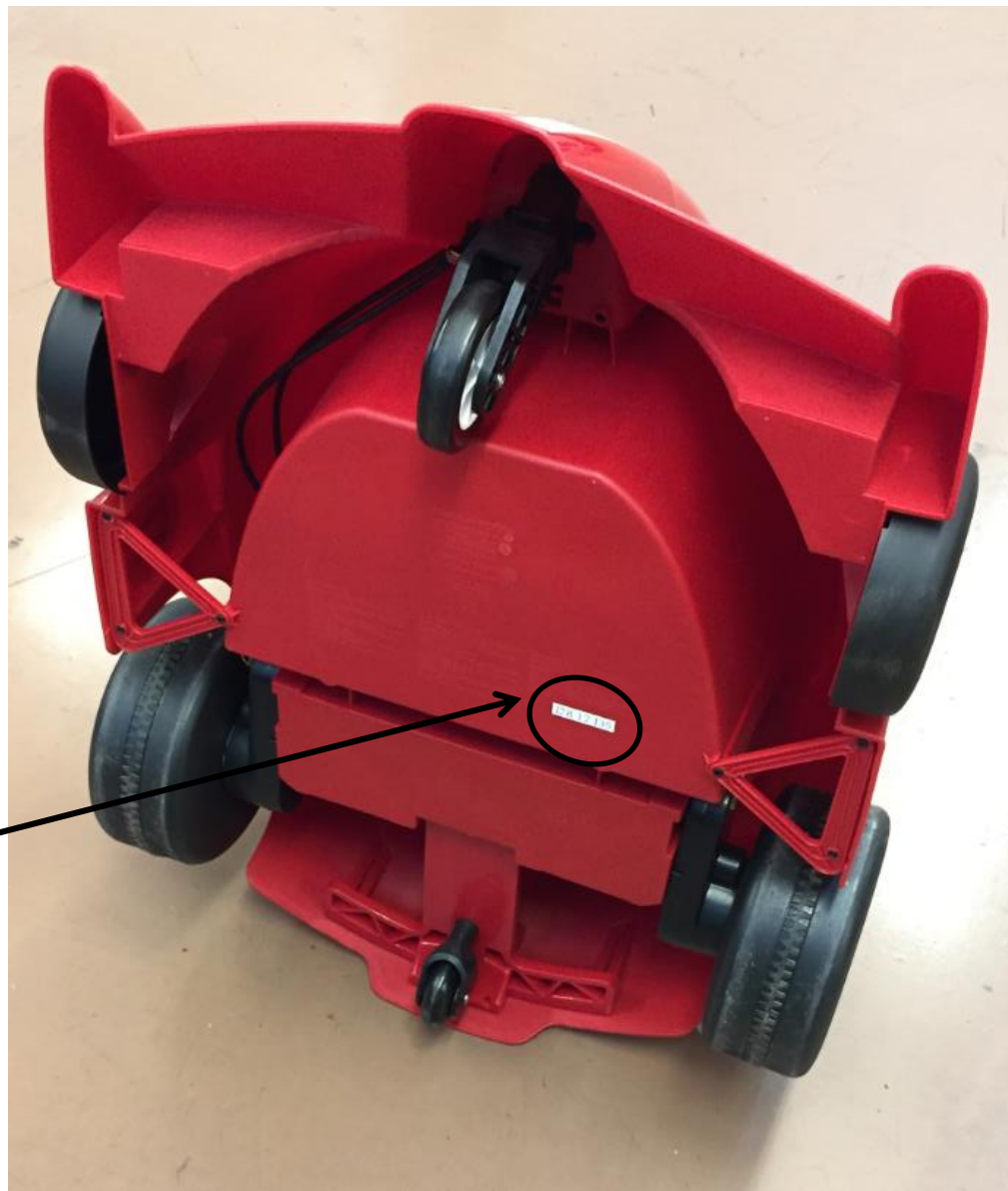
Front of Car



Back of Car



- Model 930
- Position: On the underside of the vehicle on a white sticker
- Ends in "D5"



- Model 998
- Position: On the underside of the front of the vehicle on a white sticker
- Ends in “D2”



Model 952 and 952P

Position: Underside of body, near rear wheels



Model 907, 904

Position: Underside of truck, on a white sticker

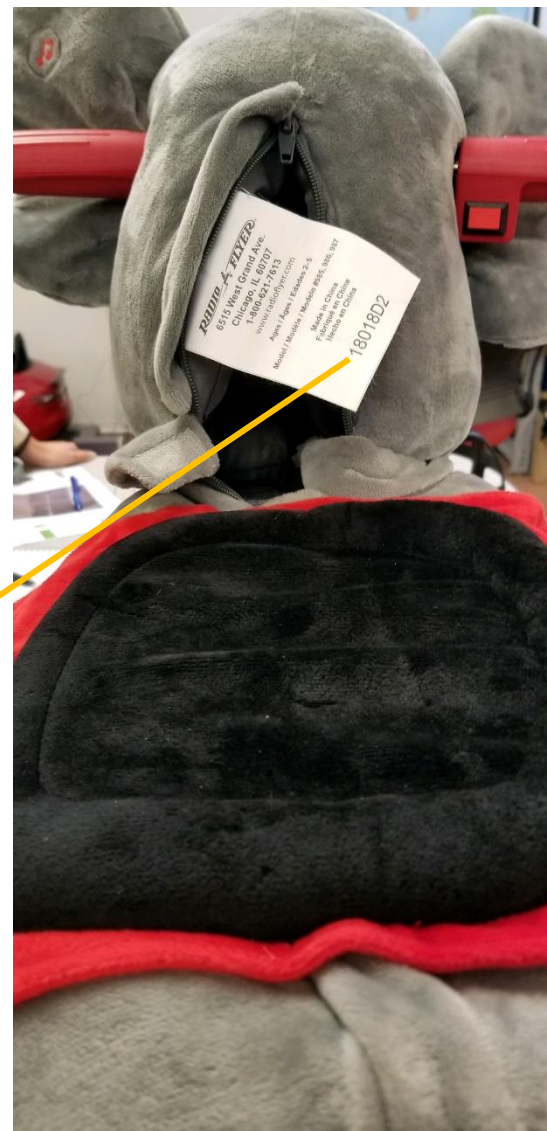
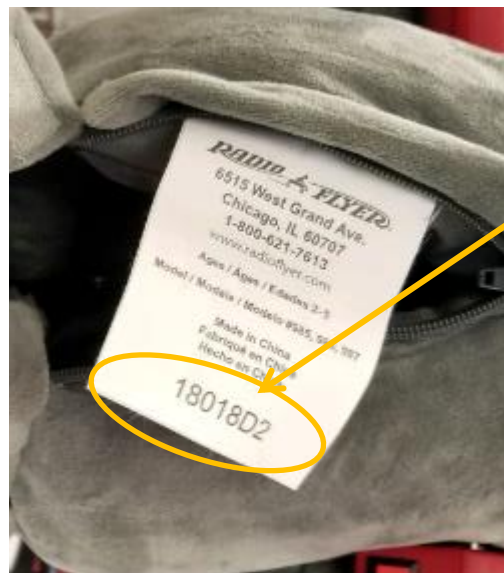


Model: 926

Position: Stamped on the underside of the ride-on



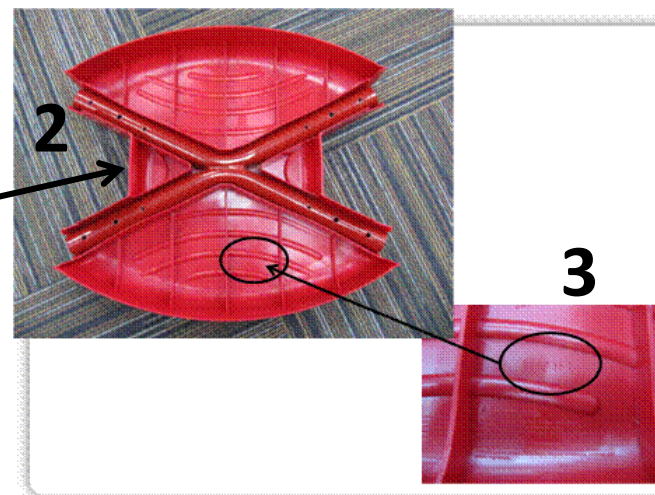
- Model 985/986/987
- Position: On white tag, inside the animal's head
- Ends in "D2"



HORSES

Model: 380, 381, 382, 383, 385, 386, 377

Position: Metal frame (Warning Label) or underside of step (stamp)



Model: #353P/#354/#353

Position: Underside of the body, on the Warning Label



RIDE ONS

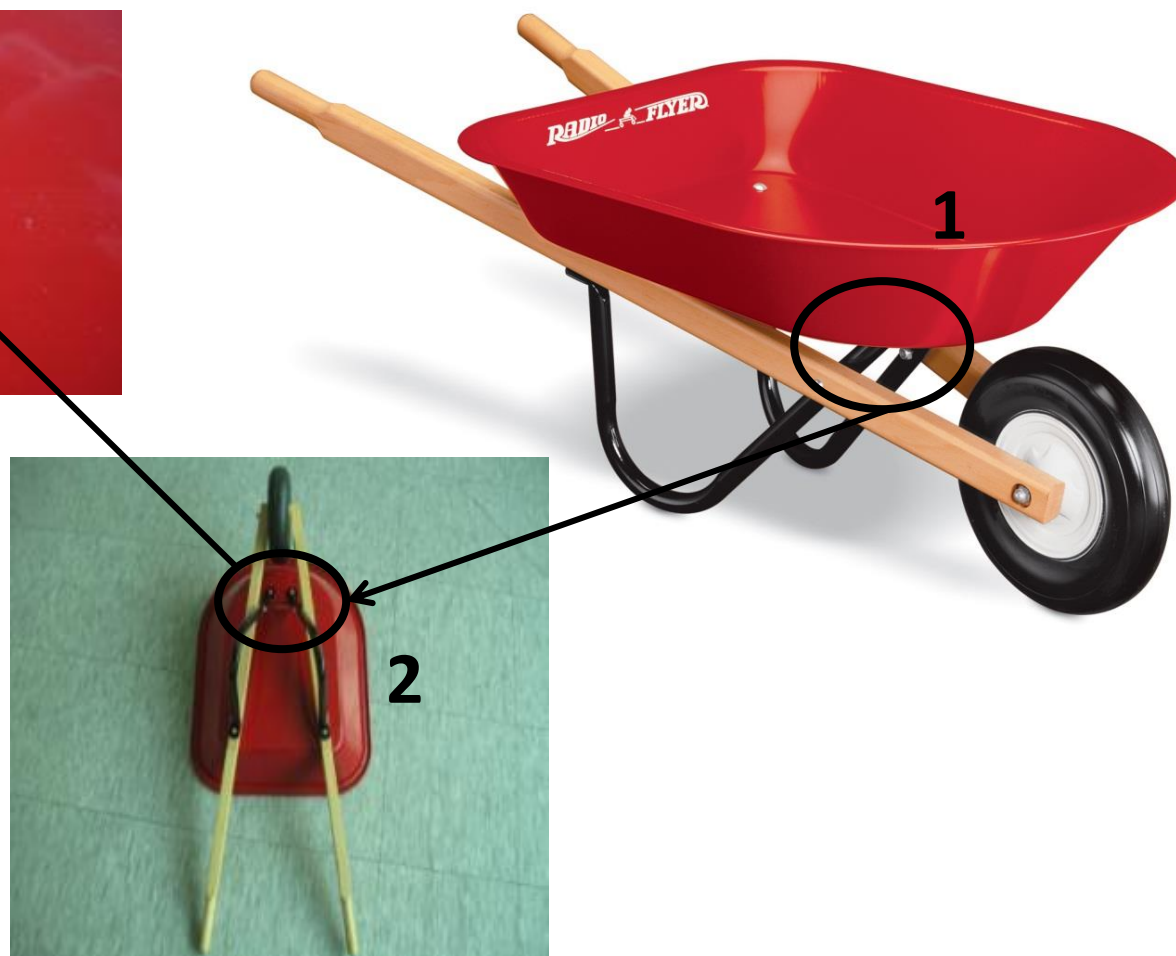
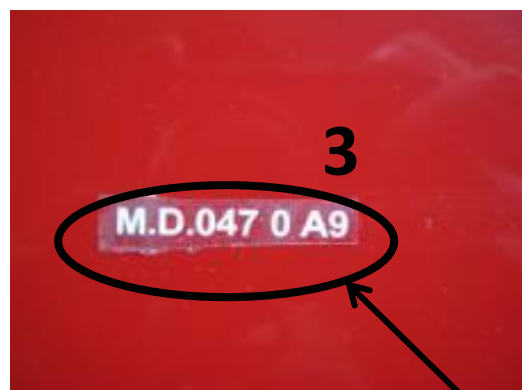
Model: 20

Position: Side of main frame on Warning Label



Model: 40

Position: Bottom of body (decals)



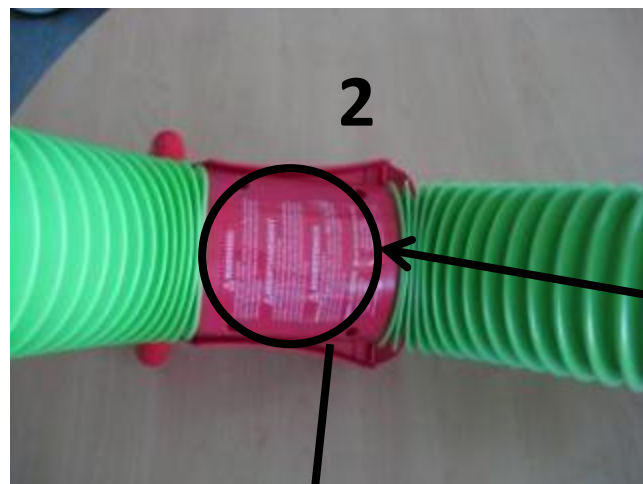
Model 68

Position: On the back of trike, on the
Warning Label



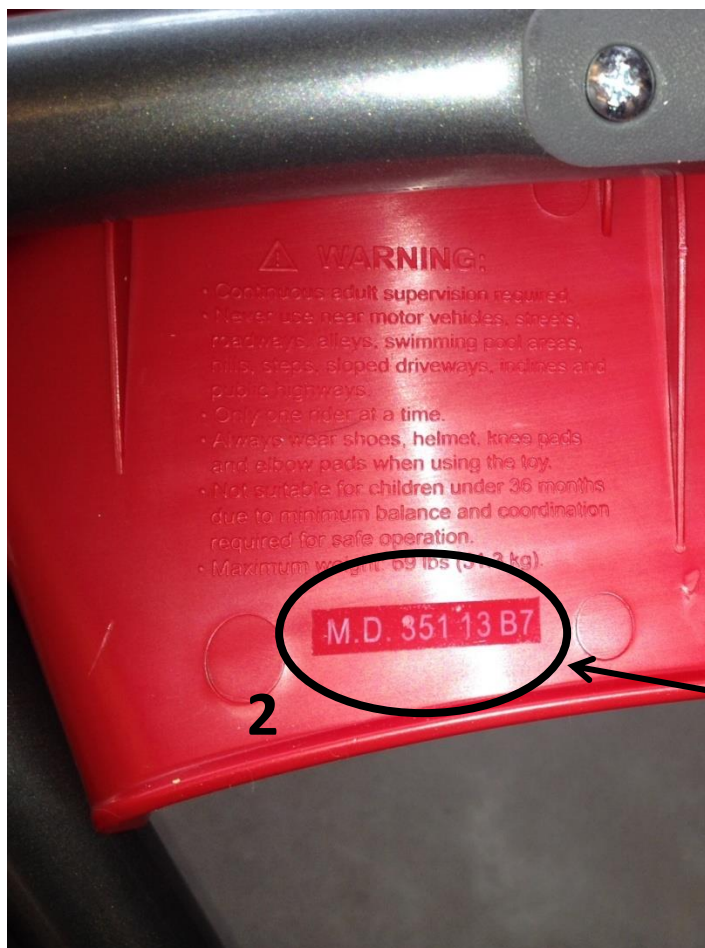
Model: 73 and 73P

Position: Under seat, on the Warning Label



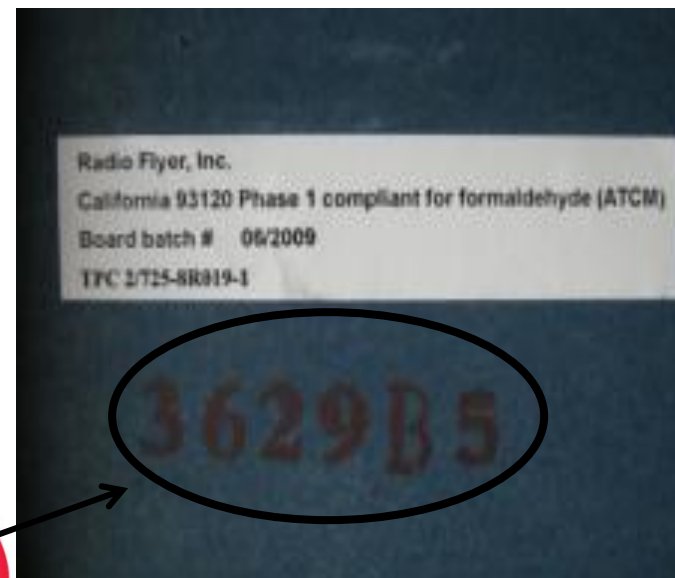
Model: 640

Position: On the underside of the footrest (sticker)



Model: 12 and 612

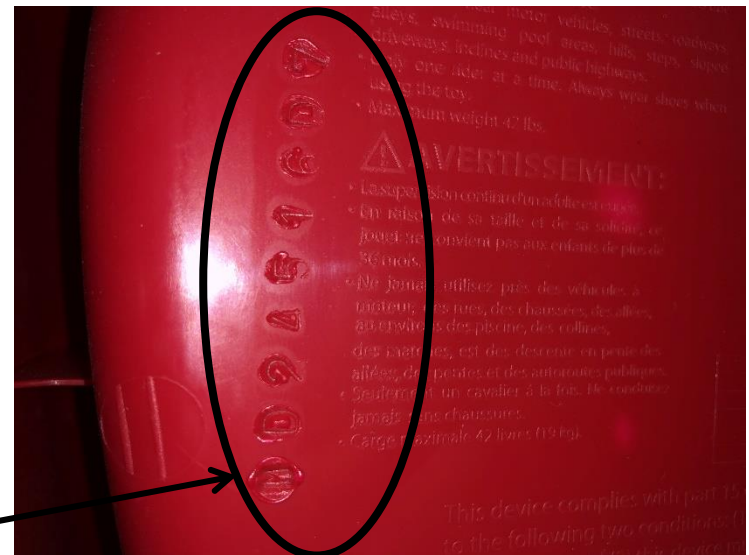
Position: Bottom of product, near front right wheel (stamp)



2

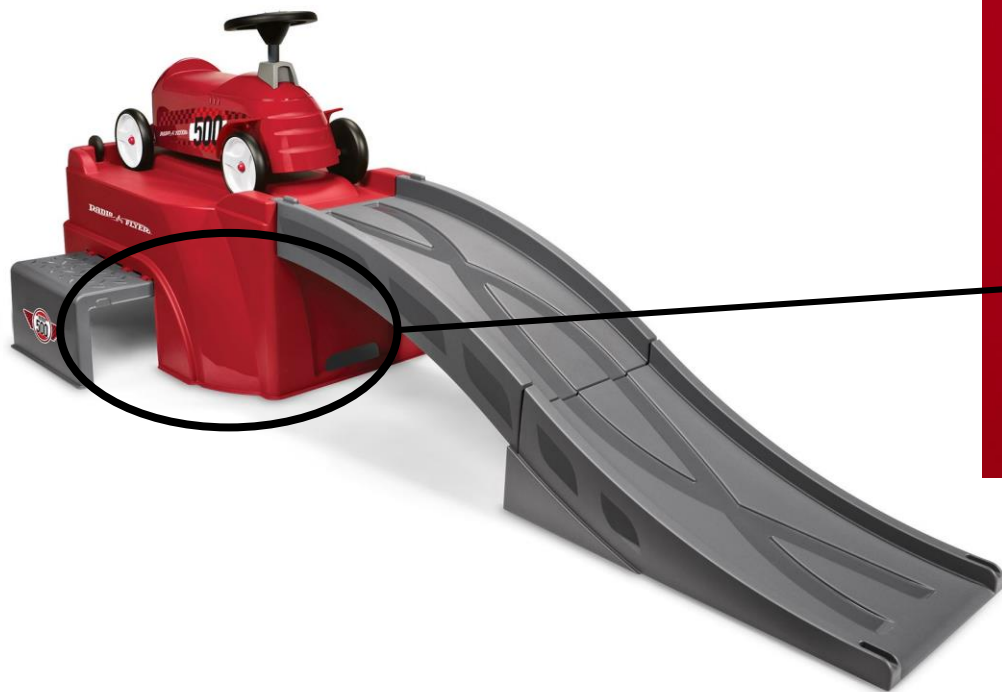
Model: 619, 619P

Position: Stamped on the underside of the ride-on



Model: 606

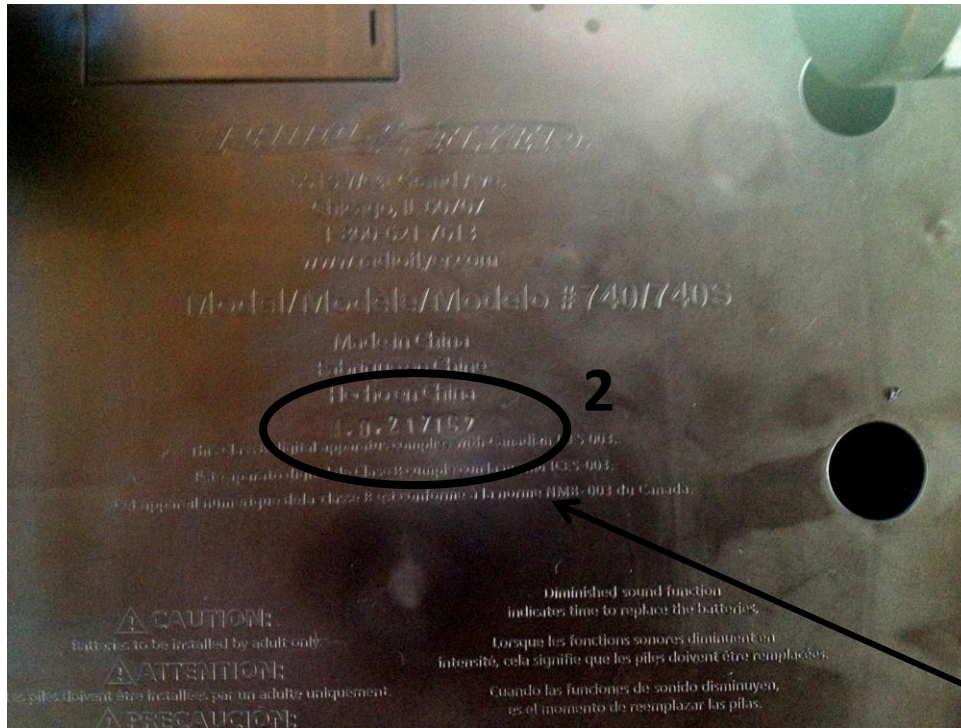
Position: On the underside of car or track base, dial system (2 dials, reference last slide for how to read dial system)



MD19247E1

Model: 740

Position: Underside of Bumper Car; cold press



Model: 320

Position: On the underside of the front axle, etched into the wood



Model: 600

Position: First number stamped on the bottom of product

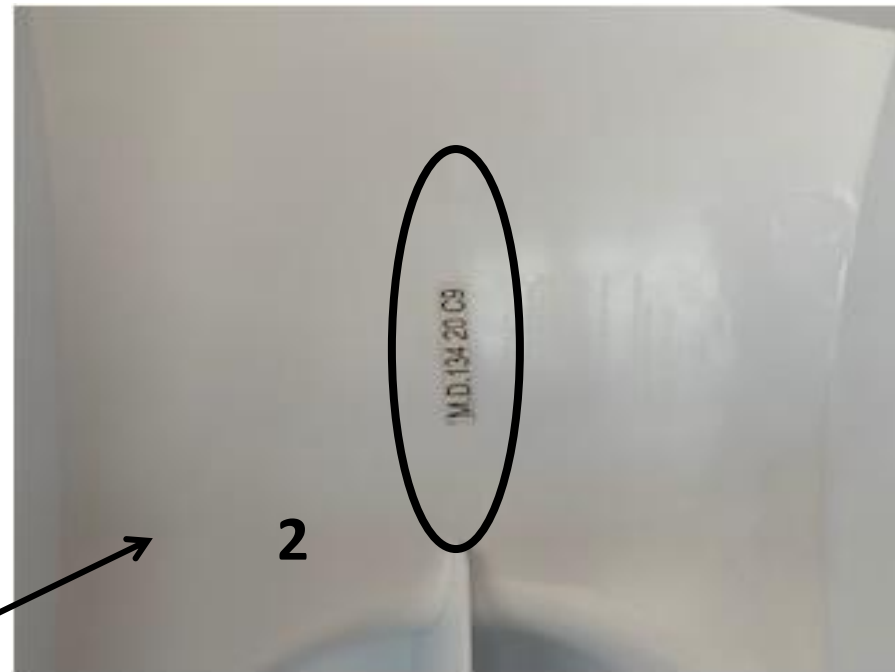


Model 603/Z/P and 604

Position: Bottom of product, near warning label



- Model 685/685P
- Position: On the underside of the body, on a white sticker



- Model: #607
- Position: First number stamped on the bottom of product



- Models: 608
- Position: Bottom of body, on the Warning Label (decal)

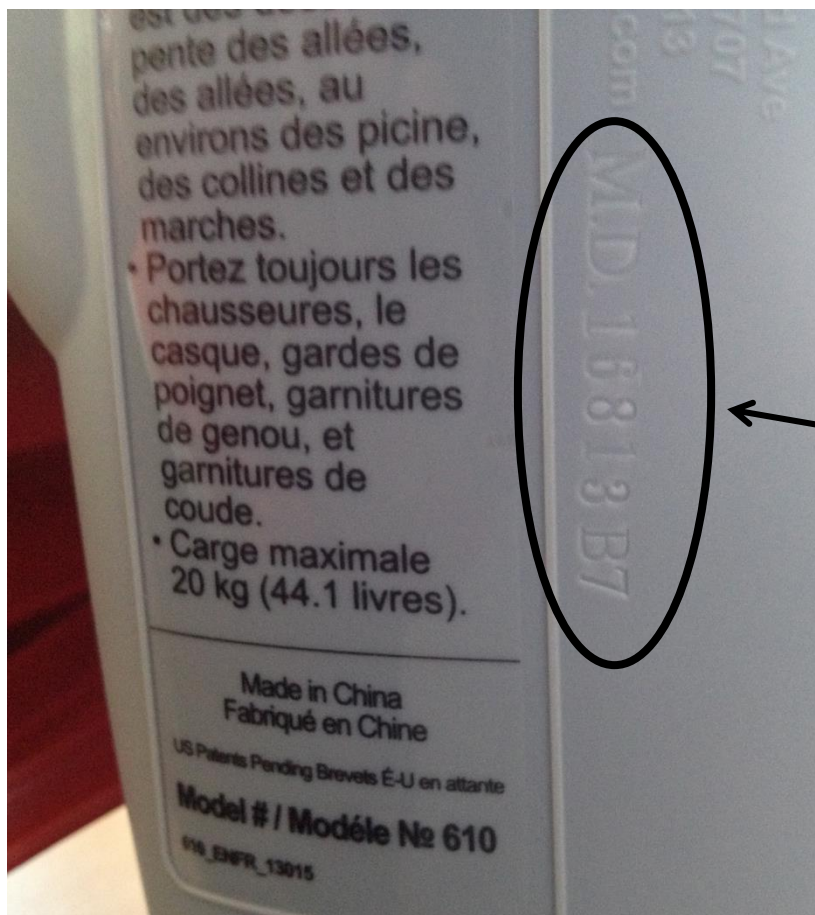


Model 615

Position: On the underside of deck, on white sticker

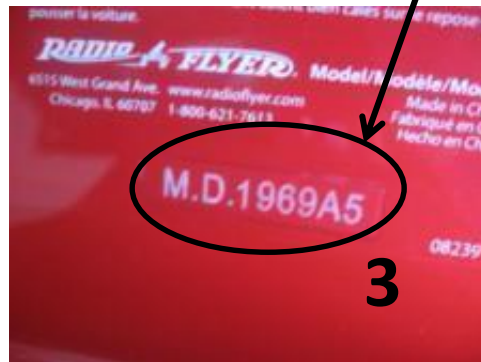
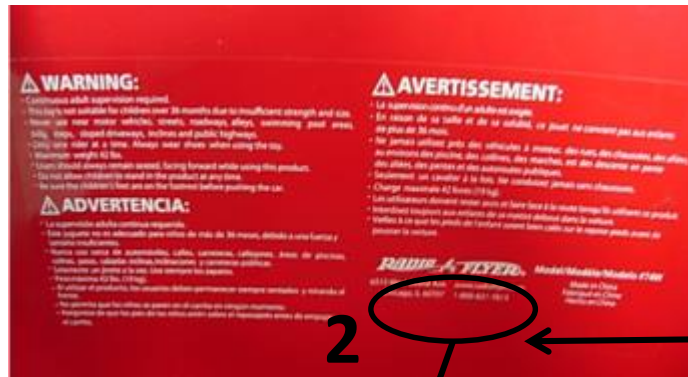


- Model 610
- Position: On the underside of front bolster; cold press



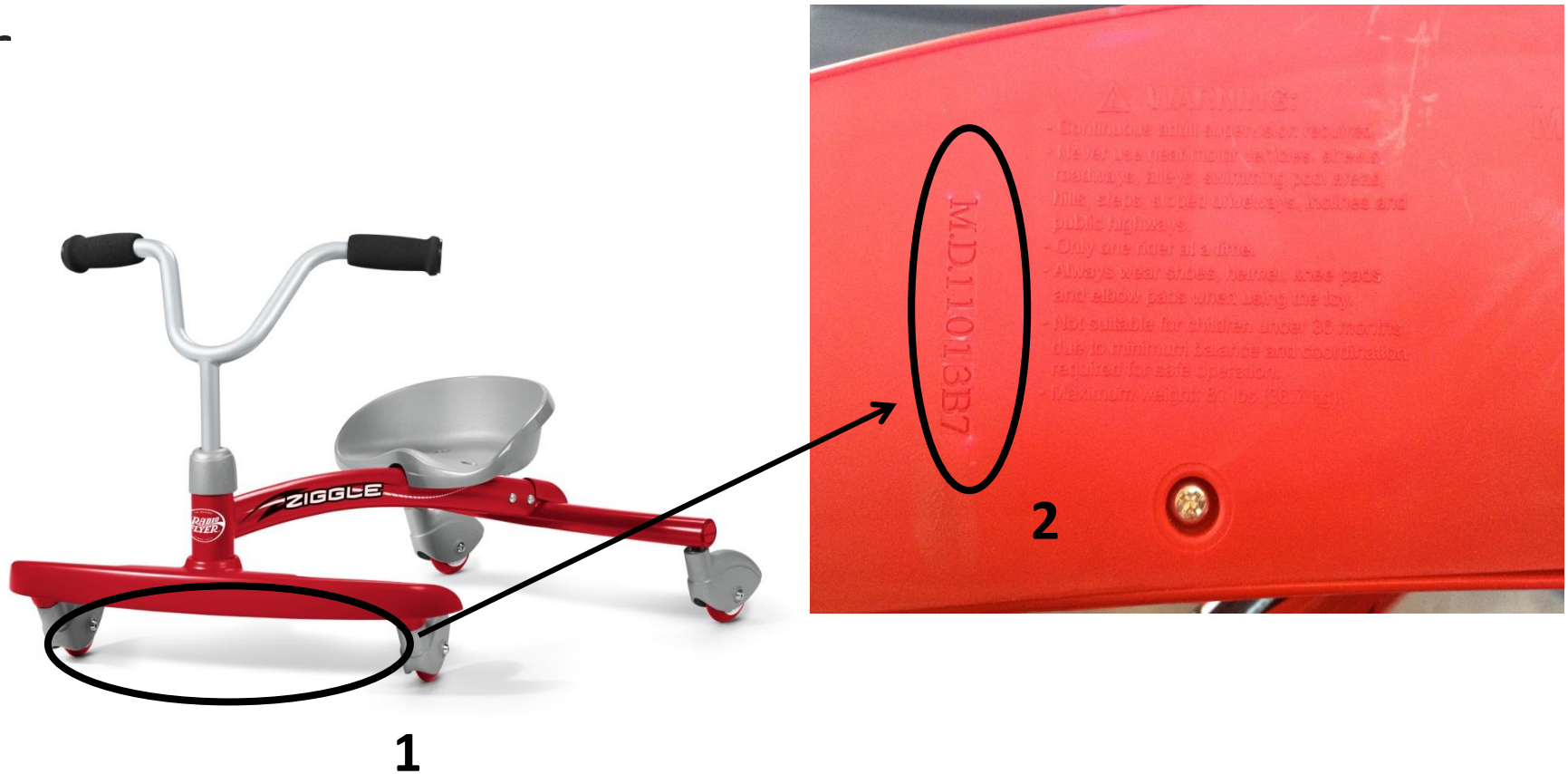
Model: 74, 74A, 74PA

Position: Inside coupe, on the Warning Label



Model 625 and 625P

Position: On the underside of the front



Model 633

Position: Bottom of product, near warning label



Model 635/636

Position: On the underside of the saucer; sticker or dial system



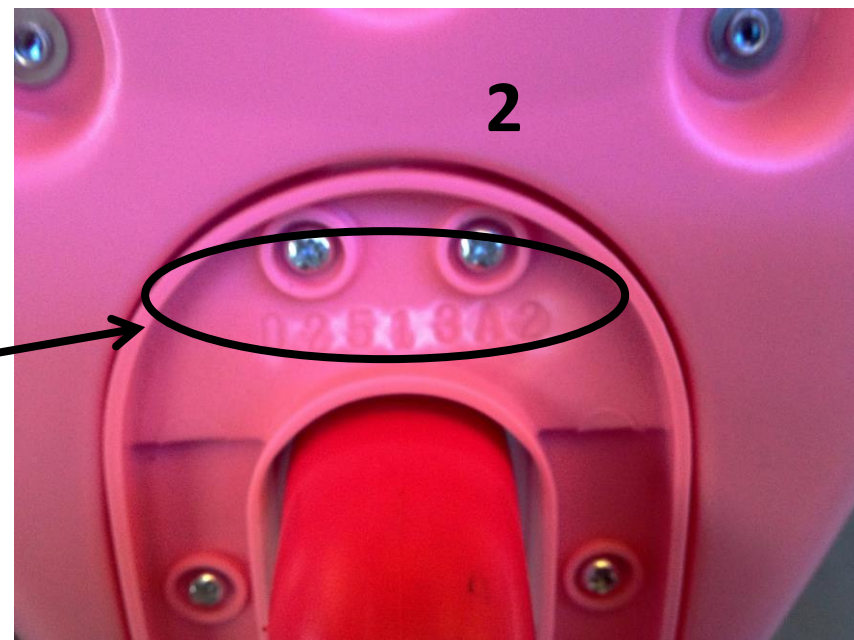
- Model 687
- Position: Bottom of body, on warning label



SCOOTERS

Models: 525 (P), 528 (P), 534(A, PA), 535(P), 536(P), 537(P), 538 (P), 539(P), 543(P)

Position: On the underside of the deck, near the rear wheel (cold stamp)



Models: #501, 549/B/PP, 502/BA/GA/PA/PPA

Position: Warning Label on the underside of the deck. MD cold stamped near the rear wheel

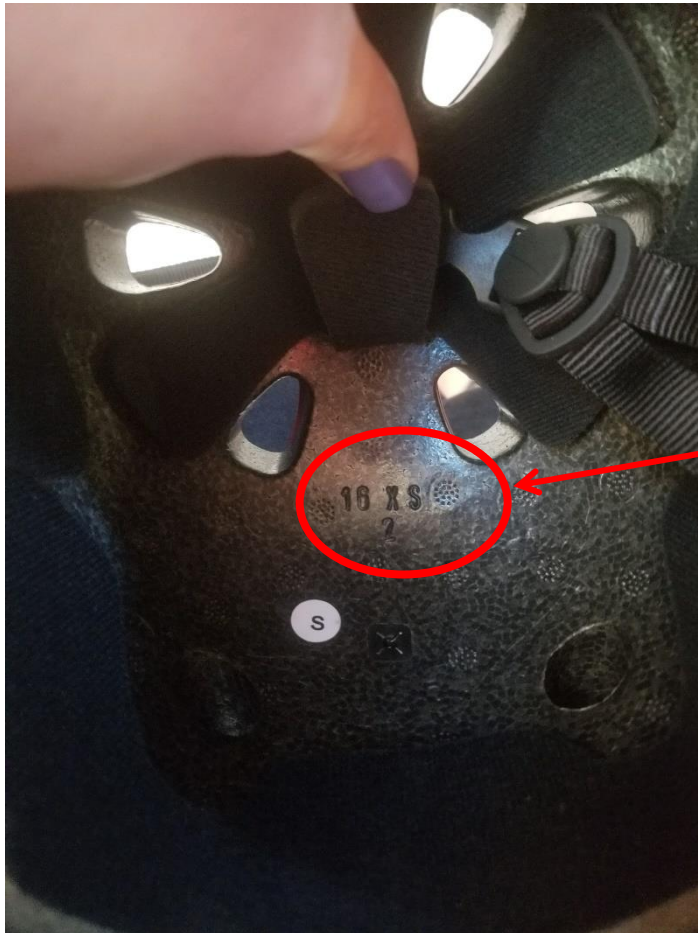


***MD Below Reads:
07615B7**



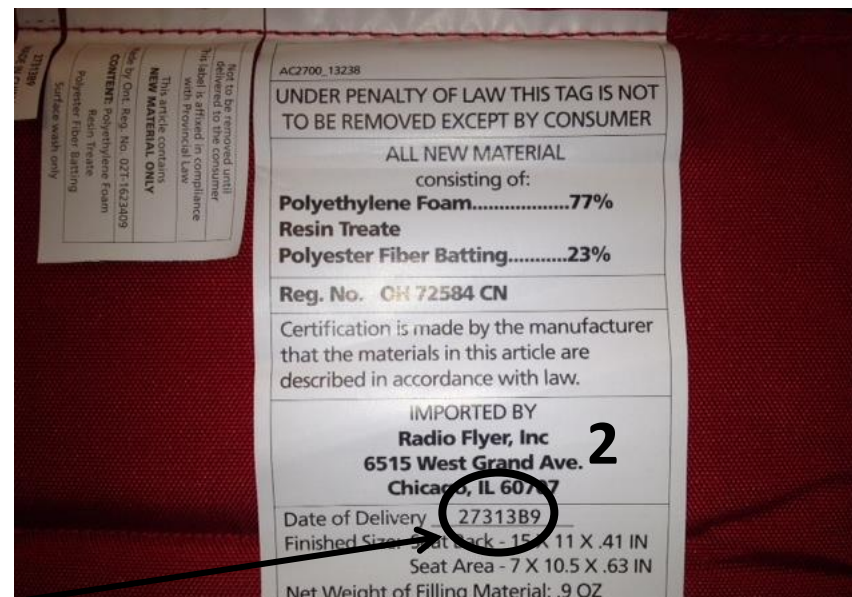
ACCESSORIES

- Model: AC100, AC100P/Z
- Position: Stamped inside helmet



Model: AC2700 and AC3100

Position: Printed on the white label, on the back of the seat pad



Model: WC30

Position: On a tag inside the canopy's storage bag

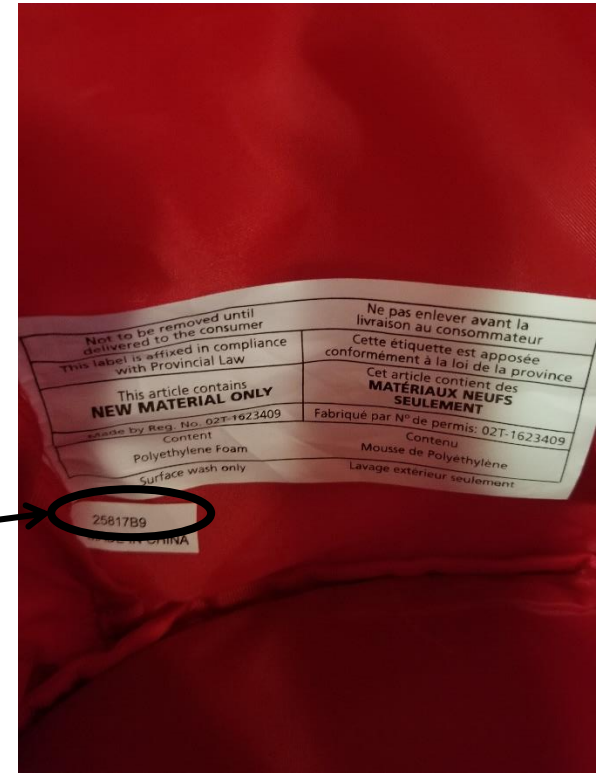


Model: UA18

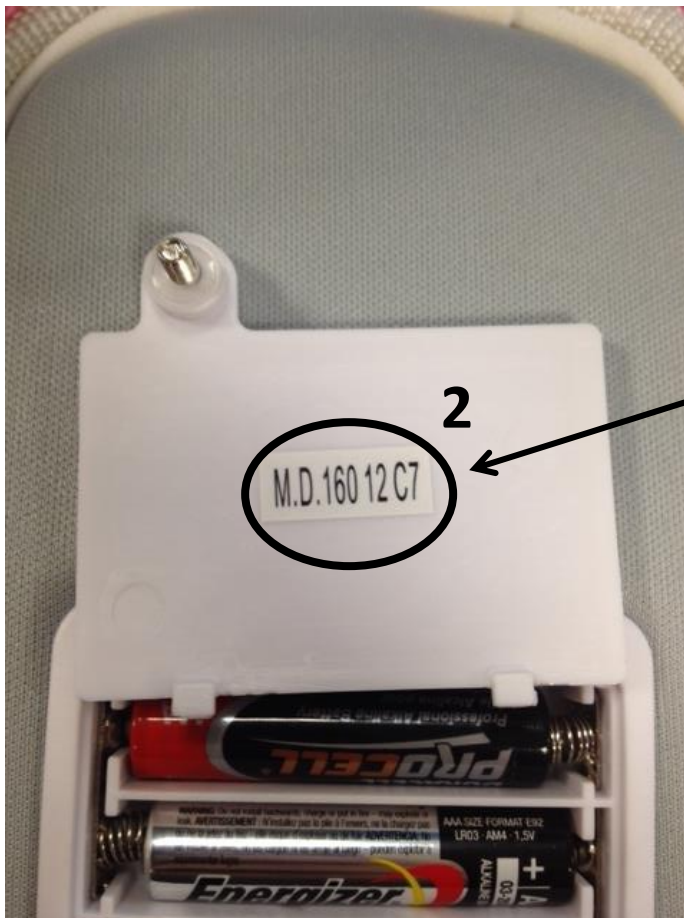
Position: Printed on sewing label; inside umbrella



- Model: WS09, Storage Bag Accessories
- Position: Printed on the white tag, inside bag and near larger warning tag



- Model: AC515
- Position: Inside of the speaker, on the interior battery door (sticker)



How to Read a Dial System MD Code:

- There will be 2 dials; one listing numbers 1-12 (month) and another listing numbers 1-30 (day).
- The dial with numbers 1-12 will also have another number in the center of the dial (the year).
- There will be an arrow inside of each dial, corresponding to a number.
- You then read the 3 numbers from the two dials, creating a Manufacturing Date.
- Example: By looking at the dials of this product, the Manufacturing Date is 8/26/10

