



promate.net Lifestyle Technology

# **Beam** **5200mAh Multi-function** **Power Bank with Electronic** **Lighter and Flashlight**



UV Beam



Environmentally  
Safe



User Guide

## Introduction

Go green with Beam, a one of a kind Power Bank with an electronic flameless lighter. Not only does this backup battery charge your smartphone but even helps you light things up when a source of fuel is not available. Additionally Beam features an emergency LED light and UV Light to check authenticity of bank notes. Beam, An all in one back up battery that meets your every need.

## Packaging Contents

- Beam back-up battery
- Micro-USB Charging Cable
- User Guide

## Specification:

Battery Capacity: 5200mAh

Input: DC 5V, 0.8A

Output: DC 5V, 2.0A

Battery Type: Li-ion Battery

Input Type: Micro-USB Charging port

Output Type: USB Charging port

## Features:

- 5200mAh Backup Battery
- Universal USB port to charge any kind of 1A USB powered device
- Flameless and no fuel required electronic lighter
- Environmentally safe
- Over-current, Over-voltage, Over-charge and Short-circuit Protection
- Ultra-bright LED emergency light
- UV beam for counterfeit note checking

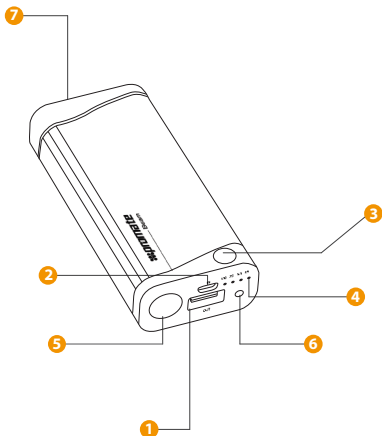
## Precautions

Please read all safety instructions and warnings thoroughly before using this product. Improper use of this product may result in damage to this or attached products.

1. Do not disassemble the back-up battery or attempt to fix it.
2. Kindly use an original charging cable provided to charge the product.
3. Do not attempt to replace any part of this Back-up battery or battery inside.
4. Do not crush, puncture, dispose of in fire, short the contacts or expose the battery to water or other liquids.
5. Do not connect input and output in reverse.
6. Do not store or use the battery in a high temperature environment, including intense sunlight or heat.
7. Avoid drops, bumps, abrasions and impacts.
8. If there is any reason to believe that there is damage to the battery, discontinue use immediately.
9. If you find that the battery is too hot, emitting an odor, deformed, punctured or exhibits any suspicious or abnormal behavior, discontinue use immediately and contact our customer service.
10. Always charge this product before extended storage.

## Appearance & Interface Description:

1. 2A output port
2. 5V /0.8A Input port
3. Multi-function Button
4. Charge Indicator
5. LED Light
6. UV Light
7. Electronic lighter



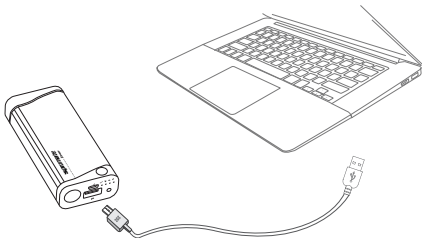
## Operation Instructions:

### 1. Checking the remaining power left in Beam back-up battery

Tap the Multi-Function button once to view the amount of power remaining in Beam.

No. of LED's Active	1	2	3	4
% of power remaining	<=25%	<=50%	<=75%	<=100%

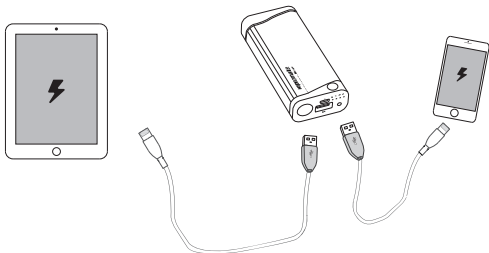
### 2. Charging Beam back-up battery



Plug the Micro-USB end of the charging cable provided into the Micro-USB charging port in Beam back-up battery. Connect the other end of the Micro-USB charging cable to a USB power adapter or computer USB port. The battery level indicator LED's light up indicating that the back-up battery is charging normally.

### 3. Charging USB chargeable devices using Beam

There is 1 port available on Beam. Plug the USB cable into the USB output port on Beam back-up battery and the other end into the device. The device will now automatically start charging. Detach the USB cable once charging is complete.



### 4. Using the LED on Beam

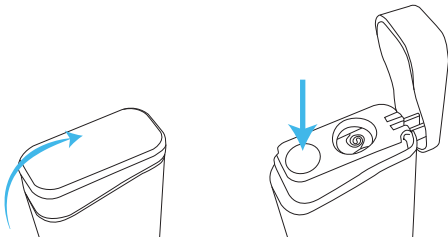
- Press the multifunction button twice to turn on the LED located on the front of the product.
- Press the multifunction button twice again to turn off the LED located on the front of the product.

## 5. Using the UV light on Beam

- Press and hold the multifunction button to turn on UV light located on the front of the product.

## 5. Using electronic lighter on Beam

- open the cap, press and hold the button





[www.promate.net](http://www.promate.net)