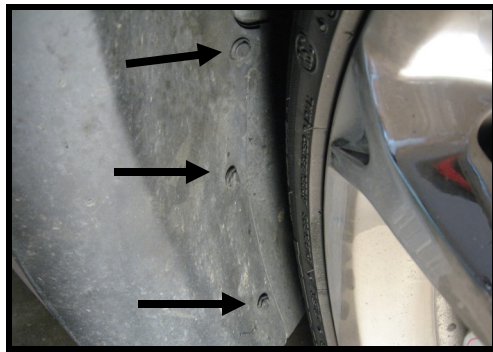


# C6 & GS RGB COVE KIT

Installation can be done by raising the car and turning the wheels out on the side your are working on. **We recommend testing the kit before you install it by hooking it up to the battery or any 12 volt source.** The led strips can be mounted without taking off the shield behind the vents so if your not painting them you can skip that step.



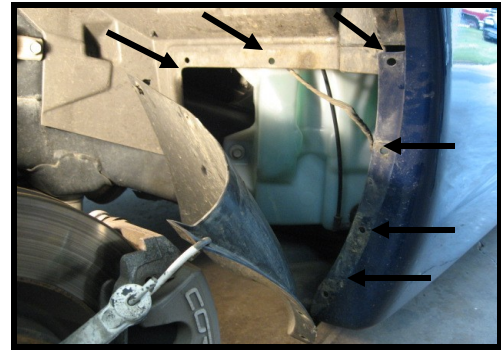
Place the remote control box by the battery and stretch the long led wire across the cowl. Pull the cowl weather strip off by pulling forward on it.



On GS and other later model C6's this is the style of inner fender panel. Remove 3 plastic retainers by pulling the center pin then remove the entire retainer. There is also a 8mm bolt on the bottom you can remove. Your not done yet, there are 5 clips that hold the panel to the outer lip of the fender.



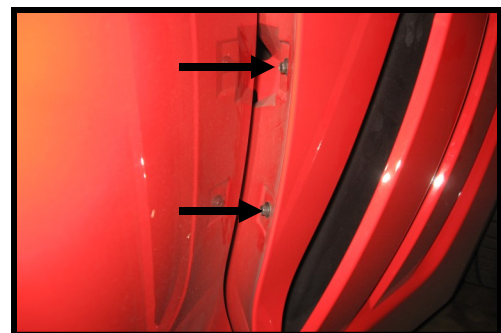
Shield removed to gain access to cove area. Leds will drop into this area for installation.



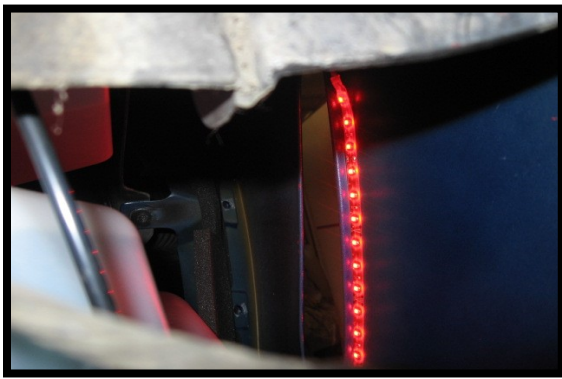
There are 2 styles of inner fender shields depending on the year and model of C6. This shows the early style. Remove plastic retainers so you can pull the shield back to gain access to cove area.



Using a panel removal tool and a shop rag to protect paint, pry between the panel and fender to unlatch these clips. The one at the top of the fender has a hooked retainer so remove the 2nd and 3rd ones first

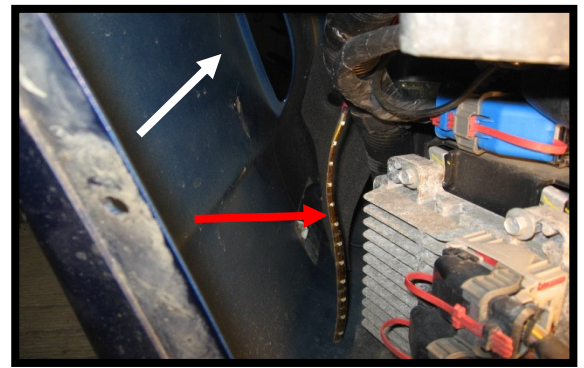


If removing the cove shields you need to remove these 2 screws from the rear of the fender. Open door, put protective tape around this area to protect the paint. The shield is also held on by 2 adhesive pads. New adhesive pads provided.

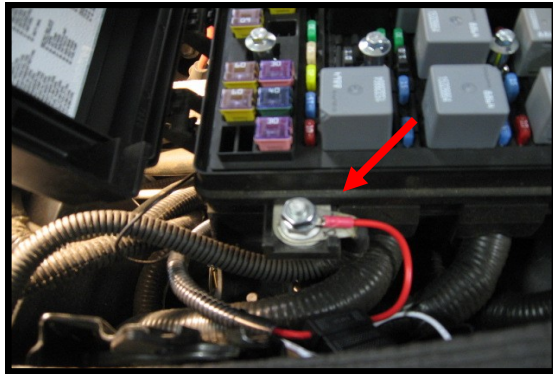


It helps to put a light in the cove area so you can find a path from above to route the led strips. The drivers side is easy. Just drop the leds past the W/S washer bottle into the cove area. Wipe the area around the opening with alcohol swabs. Best results are achieved by mounting the strips on the inside of the fender about an inch from the opening facing the cove shield

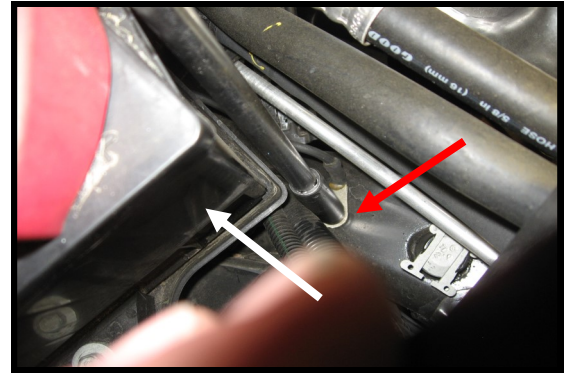
**IMPORTANT;** Use some very strong tape such as duct taper or gorilla tape to secure the wired end of the strip to the inner fender so it doesn't pull off.



On the passenger side, Use a coat hanger to find a path down to the cove area (red arrow). Route leds down to the cove opening and use the same procedure to mount them as the drivers side. Mount on the inside of the fender facing the cove shield (white arrow). **IMPORTANT;** Use some very strong tape such as duct taper or gorilla tape to secure the wired end of the strip to the inner fender so it doesn't pull off.



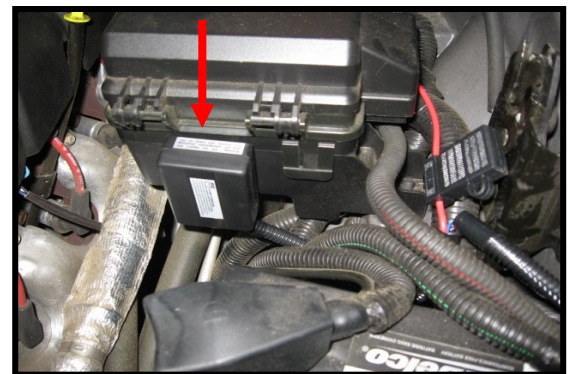
Open the cover over the positive battery connection at the under hood fuse box. Place red wire from control box over this stud and secure with provided nut. You can also connect it to the battery.



Below the battery tray (white arrow) along the frame rail there is a ground nut (red arrow).. Place the black wire from the control box over this stud and attach with the provided nut. You can also connect it to the battery. You can now test the cove lights.



After leds are working you will need to hide the wires under the cowl weatherstrip or behind the engine away from the exhaust. You can tape the wires to the top of the cowl and slide the weatherstrip over being careful not to damage the wires.



After all wires are secured and lights are working, You can now mount the control box on the fuse box or under the cowl lip above the battery. You can now reassemble all shields. Remember, the Inner fender panels have a hooked clip on the top that should go in first. Enjoy the new lights!!