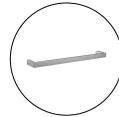
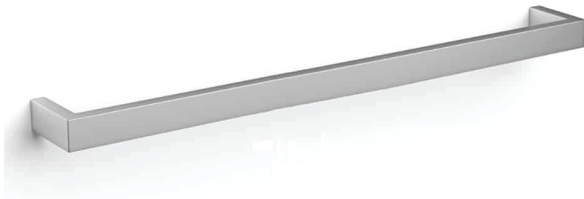




HEATED TOWEL RAILS

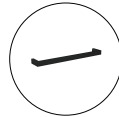
Square Single Bar Heated Towel Rail



Cod. **DA-DSS8BR**
BRUSHED W832xH40xD100mm

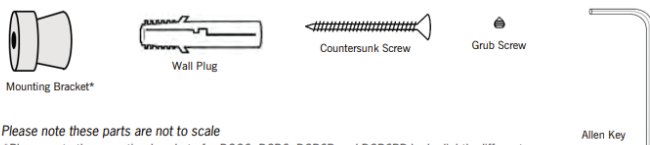


Cod. **DA-DSS8**
SATIN WHITE W832xH40xD100mm



Cod. **DA-DSS8B**
MATT BLACK W832xH40xD100mm

· TECHNICAL DRAWING ·



Please note these parts are not to scale
*Please note the mounting brackets for DSC6, DSP6, DSP6B and DSP6BR look slightly different

· SPECIFICATIONS ·

Output 30Watts
IP Rating IP45
Warranty 7yrs
Lead Length 2m
Voltage 12Volt
No of Bars 1
Wiring Type Concealed (hardwired)
Wiring Position Right hand side
Distance Between Mounting Points (Left to Right)



For detailed information, please see our website www.dellarte.us

Legal disclaimer: The details provided by this technical file have an informational purpose, thus no contractual value. To obtain further information about the materials and the installation, please contact one of our sales advisors. DELL'ARTE Pty Ltd. reserves the right to modify or delete any information regarding its products. Weights, measurements and colours may be subject to small variations.

The copyright of this Fact Sheet, all content, graphic design and codes belongs to DELL'ARTE Pty Ltd. and therefore, reproduction, distribution, public communication, transformation or any other activity that can be done with the contents or even quoting the sources, without written consent is prohibited by DELL'ARTE Pty Ltd. All trade names, trademarks and distinctive signs of any kind on this Fact Sheet are property of their owners and are protected by law.