

East London Cloth

Cafe Curtains

www.eastlondoncloth.co.uk



CAFE CURTAINS

East London Cloth cafe curtains form part of our *made to measure* range. Available across our selection of lightweight and sheer linens and in a choice of two styles.

Your cafe curtains are ordered to fit the size of your window, with a lead time of 6 weeks.

Designed to fit with our range of hardware (ordered separately.)



*Linen - Alvington
Style - Pencil Pleat*

STYLES



PLEATED TOP

The pleated top cafe curtain sits on the cafe pole with rings, making it easier to swish to the side or remove.

Available in widths of up to
200cm*
Available in drops of up to
150cm*



POCKET TOP

The pocket top cafe curtain slides on to the pole itself. Simpler and less fussy in its style and has less fullness so sits flatter than the pencil pleat.

Available in widths of up to
125cm*
Available in drops of up to
150cm*

ELDERFIELD



POCKET



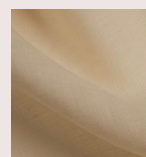
POLE WIDTH	DROP
0 - 110cm	0-150cm
III-125cm	0-130cm

PLEATED

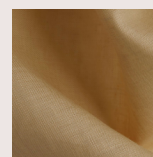


POLEWIDTH	DROP
0 - 110cm	0-150cm
III-200cm	0-130cm

Simple and classic, Elderfield finds the perfect balance between privacy and light. Available in three shades from turpentine, which is just off white, to cornsilk, the warmest of our tones.



Vellum



Cornsilk



Turpentine

ALVINGTON



POCKET




POLE WIDTH	DROP
0 - 110cm	0-150cm
111-125cm	0-130cm

PLEATED



POLE WIDTH	DROP
0 - 110cm	0-150cm
111-200cm	0-130cm

Heavier in weight with beautiful texture. Brushfield and Alvington provide excellent privacy whilst the texture diffuses the light.

A photograph of a window with white lace curtains. The curtains have a scalloped top edge and a matching scalloped bottom edge. A green plant is visible in the bottom left corner. The text 'East London Cloth' is written in a cursive font across the middle of the window.

East London Cloth

SAY HELLO

The old fashioned way - 7A
Vyner Street, London. E29DG.

Email:
shop@eastlondoncloth.co.uk

Website:
www.eastlondoncloth.co.uk