



# Just Drive!

Start your vehicle the first time, every time and remove all battery worries from the equation. Extend battery power and life with every pulse of your battery thanks to PulseTech.



Batteries last up to  
**3X**  
LONGER!

RECOVER • CHARGE • TEST • MAINTAIN

For Technical Support and Marketing Materials Call 800-580-7554 or Visit [www.pulsetech.com](http://www.pulsetech.com)

## Testers



### 390PT and 777P-PT Battery Analyzers

Test 6V and 12V lead-acid batteries in or out of your vehicle as well as 12V and 24V charging systems for proper operation. Both of these battery analyzers display both battery voltage and cranking amp capacity in seconds. The 777P-PT also has a built-in printer making it an essential tool for diagnosing battery condition and record keeping.

Part No: [741X390](#) Model: [390PT](#)  
Part No: [741X777](#) Model: [777P-PT](#)

## Recovery Chargers



### Don't throw away old or spent batteries - recover them!

Recover heavily discharged and sulfated 12V batteries (VRLA, AGM, gel or flooded cell) with one of PulseTech's suitcase recovery chargers. Their patented Pulse Technology removes and prevents sulfate crystals from the battery plates increasing the battery's ability to accept, store and release energy.

Part No: [745X810](#) Model: [SC-12](#) (Recover 12 batteries at a time)  
Part No: [745X816](#) Model: [SC-6](#) (Recover 6 batteries at a time)  
Part No: [745X814](#) Model: [SC-2](#) (Recover 2 batteries at a time)

## Maintain Batteries In Your Shop

### PRO-12-RP, 12-Station Battery Maintenance System

Don't let new or used batteries discharge before you've even used them. Keep as many as 12 stored 12-Volt lead-acid batteries fully charged and in 'factory fresh' condition until you're ready to use them. LEDs indicate the status of each battery.

Part No: [746X915](#) Model: [PRO-12-RP](#)



## Maintain Batteries In Your Vehicles



SP-12

### Use the Power of the Sun to Extend the Life and Power of Your Batteries

PulseTech's SolarPulse solar chargers prevent the normal loss of battery power on vehicles and equipment stored outside and apply our sulfate killing patented Pulse Technology. Your batteries will remain in peak condition, even when sitting for months at a time, dramatically reducing jump starts.

Part No: [735X468](#) Model: [SP-12](#), 12-Watt  
Part No: [735X467](#) Model: [SP-7](#), 7-Watt  
Part No: [735X453](#) Model: [SP-3](#), 3-Watt

SOLARPULSE SPECIFICATIONS			
	SP-3	SP-7	SP-12
Wattage	3 W	7 W	12 W
Output Current	240 mA	450 mA	750 mA
Input Current	Solar Power	Solar Power	Solar Power
Solar Panel Dimensions (L x W x H)	9.45" x 4.70" x 0.25"	10.25" x 8.85" x 0.25"	12.41" x 9.85" x 0.2"
Circuit Box Dimensions (L x W x H)	3.4" x 2.25" x 1.5"	3.4" x 2.4" x 1.5"	3.4" x 2.4" x 1.5"
Box to Lug Wire Length	3'	3'	3'
Box to Panel Wire Length	17'	17'	17'

## BMP Kits

Save money by buying a BMP Kit instead of products separately.

Part No: [746X201](#)  
Model: [BMP-1](#)

Part No: [746X202](#)  
Model: [BMP-2](#)

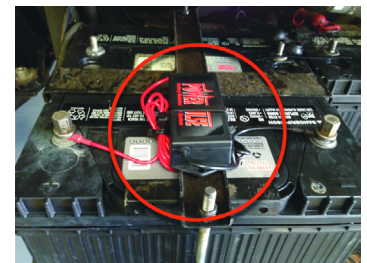
Part No: [746X203](#)  
Model: [BMP-3](#)



Kit	No. of Batteries Discarded per Month	Kit Includes These Items:		
		Recovery Charger	Battery Maintainer	Battery Tester
<a href="#">BMP-1</a>	50+	SC-12	PRO-12-RP	777P-PT
<a href="#">BMP-2</a>	25-50	SC-6	PRO-12-RP	390PT
<a href="#">BMP-3</a>	1-25	SC-2	PRO-12-RP	390PT

## PowerPulse Maintenance System

Selected as a Top 50 Product by Automotive Engineering magazine, the PowerPulse helps batteries charge faster and last longer.



PowerPulse Configurations				
Model No.	Part No.	Single Battery	Batteries in Parallel	Batteries in Series
PP-12-L	<a href="#">735X012</a>	12-volt	Up to three 12-Volt	Two 6V
PP-24-L	<a href="#">735X024</a>	24-volt	Up to three 24-Volt	Two 12V or Four 6V
PP-36-L	<a href="#">735X036</a>	36-volt	Up to three 36-Volt	Three 12V
PP-48-L	<a href="#">735X048</a>	48-volt	Up to three 48-Volt	Two 24V or Four 12V