

# PULSETECH PRODUCTS KEEP BATTERIES FULLY CHARGED AND READY TO WORK!



Whether you are battling battery longevity or performance problems or discharged batteries from equipment sitting idle for long periods or are needing additional off-grid power to support to offset parasitic loads from onboard vehicle telematics equipment or communications management systems, **PulseTech has you covered!** No more worries about costly no starts or battery replacement to keep things growing including your profits!



SP-3

SP-7

SP-12

Application	SP-3	SP-7	SP-12
Telematics Support		X	X
Jump Start Avoidance	X	X	X
Lot Rot Prevention	X	X	X
Battery Performance/Maintenance	X	X	X
1 - 12V Battery	X		
2 - 12V Batteries		X	
3 to 4 - 12V Batteries			X

Proper application can depend on actual parasitic loads. Please contact PulseTech with any questions at 1-800-580-7554.



**RECOVER • CHARGE • TEST • MAINTAIN**

Technical Support and Marketing Materials Call 800-580-7554 or Visit [www.pulsetech.net](http://www.pulsetech.net)

## Testers



### 390PT and 777P-PT Battery Analyzers

390PT

777P-PT

Test 6V and 12V lead-acid batteries in or out of your vehicle as well as 12V and 24V charging systems for proper operation. Both of these battery analyzers display both battery voltage and cranking amp capacity in seconds. The 777P-PT also has a built-in printer making it an essential tool for diagnosing battery condition and record keeping.

Part No: 741X390 Model: 390PT  
Part No: 741X777 Model: 777P-PT

## Maintain Batteries In Your Vehicles



SP-12



### Use the Power of the Sun to Extend the Life and Power of Your Batteries

PulseTech's SolarPulse solar chargers prevent the normal loss of battery power on vehicles and equipment stored outside and apply our sulfate killing patented Pulse Technology. Your batteries will remain in peak condition, even when sitting for months at a time, dramatically reducing jump starts.

Part No: 735X468 Model: SP-12, 12-Watt  
Part No: 735X467 Model: SP-7, 7-Watt  
Part No: 735X453 Model: SP-3, 3-Watt

#### SOLARPULSE SPECIFICATIONS

	SP-3	SP-7	SP-12
Wattage	3 W	7 W	12 W
Output Current	240 mA	450 mA	750 mA
Input Current	Solar Power	Solar Power	Solar Power
Solar Panel Dimensions (L x W x H)	9.45" x 4.70" x 0.25"	10.25" x 8.85" x 0.25"	12.41" x 9.85" x 0.2"
Circuit Box Dimensions (L x W x H)	3.4" x 2.25" x 1.5"	3.4" x 2.4" x 1.5"	3.4" x 2.4" x 1.5"
Box to Lug Wire Length	3'	3'	3'
Box to Panel Wire Length	17'	17'	17'

## Recovery Chargers



SC-12

SC-2

SC-6

### Don't throw away old or spent batteries – recover them!

Recover heavily discharged and sulfated 12V batteries (VRLA, AGM, gel or flooded cell) with one of PulseTech's suitcase recovery chargers. Their patented Pulse Technology removes and prevents sulfate crystals from the battery plates increasing the battery's ability to accept, store and release energy.

Part No: 745X810 Model: SC-12 (Recover 12 batteries at a time)  
Part No: 745X816 Model: SC-6 (Recover 6 batteries at a time)  
Part No: 745X814 Model: SC-2 (Recover 2 batteries at a time)

## Maintain Batteries In Your Shop

### PRO-12-RP, 12-Station Battery Maintenance System

Don't let new or used batteries discharge before you've even used them. Keep as many as 12 stored 12-Volt lead-acid batteries fully charged and in 'factory fresh' condition until you're ready to use them. LEDs indicate the status of each battery.

Part No: 746X915 Model: PRO-12-RP



## BMP Kits

Save money by buying a BMP Kit instead of products separately.

Part No: 746X201 Model: BMP-1  
Part No: 746X202 Model: BMP-2  
Part No: 746X203 Model: BMP-3

BMP-1



777P-PT

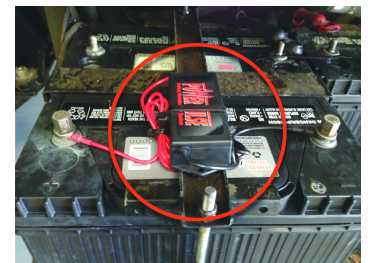
PRO-12-RP

SC-12

Kit	No. of Batteries vDiscarded per Month	Kit Includes These Items:		
		Recovery Charger	Battery Maintainer	Battery Tester
BMP-1	50+	SC-12	PRO-12-RP	777P-PT
BMP-2	25-50	SC-6	PRO-12-RP	390PT
BMP-3	1-25	SC-2	PRO-12-RP	390PT

## PowerPulse Maintenance System

Selected as a Top 50 Product by Automotive Engineering magazine, the PowerPulse is a performance enhancing device that helps batteries charge faster, last longer and provide maximum performance and power.



#### PowerPulse Configurations

Model No.	Part No.	Single Battery	Batteries in Parallel	Batteries in Series
PP-12-L	735X012	12-Volt	Up to three 12-Volt	Two 6V
PP-24-L	735X024	24-Volt	Up to three 24-Volt	Two 12V or Four 6V
PP-36-L	735X036	36-Volt	Up to three 36-Volt	Three 12V
PP-43-L	735X048	48-Volt	Up to three 48-Volt	Two 24V or Four 12V