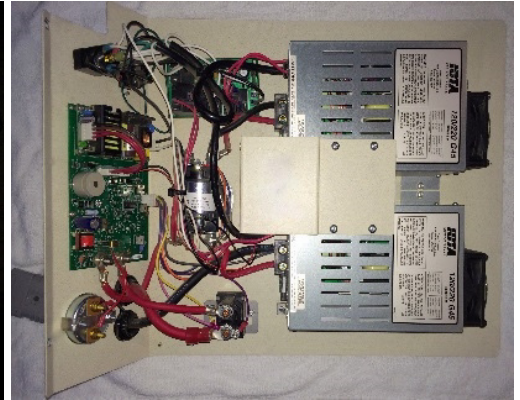


PRO-HD INSERT Installation Instructions

**PRO-HD REV-E Recovery
Charger Upgrade Insert**
Part #: 740X831
Model #: PRO-HD REV-E
NSN: 6130-01-645-5003



PRO-HD Charger
Part #: 746X800
NSN: 6130-01-500-3401



Congratulations on the purchase of your new Pro-HD replacement insert. Simply follow the instructions below to install the new insert.

1. Remove the existing Pro-HD insert from the chassis:
 - a. Using a 5/32" hex screwdriver, remove the 2 screws that hold the insert in the chassis.
 - b. Carefully pull the insert out from the chassis.
2. Place the new Pro-HD insert back into the chassis. Use the 5/32" hex screwdriver to tighten the screws that hold the insert to the chassis. Be careful not to over tighten the screws.
3. Enjoy your upgraded Pro-HD!

