

## 24-Volt Grid System

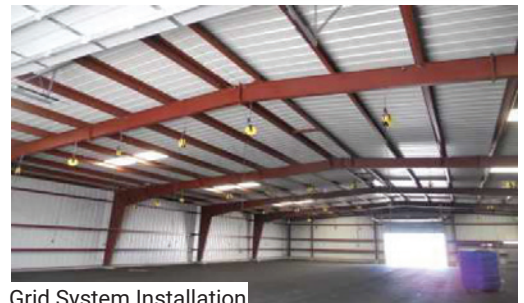
**Part #:** 735X646

**NSN:** 6130-01-497-0966

### Description:

The Grid System is a 24-Volt electrical shelter power system with power supply, wiring, conduits, junction box, drop chains and other components. This flexible power system can be configured to fit the shape and size of your shelter up to 5000 square feet and powers as many as thirty 24-Volt Drop Pulse and Charge units in either temporary or permanent shelters. The size of the shelter will determine whether you need one or more grid systems.

- Input power is supplied by existing 85-265 VAC power line through a power cord.
- Includes VAC to VDC power supply (with standard 3 prong plug), junction box, wiring, conduits, wire connectors, mounting hardware, drop chains, and much more.
- Input power required, 85-265 VAC, Output 30VDC.
- Capable of supporting up to 30 drop down reels.



Grid System Installation

### Specifications:

<b>Input Voltage</b>	Power supplied by existing 85-225VAC power line through a power cord
<b>Number of Drops</b>	30
<b>Coverage</b>	Designed to cover 5000 square feet
<b>Warranty</b>	1-Year Limited Warranty

## 24-Volt Drop Pulse & Charge Reel

**Part #:** 735X645

**Model #:** 24V REEL

**NSN:** 6130-01-497-0971

### Description:

For use with above Grid System: Charges & maintains 24-Volt lead-acid batteries.

- Microprocessor controlled, monitors and charges as needed.
- Never overcharges, LEDs indicate charge status.
- Utilizes patented high frequency Pulse Technology.
- Retractable 38' cable with a quick disconnect connection.
- 3 options for connecting to batteries:  
NATO connection, clamps, or bolt on lug connection.



### Specifications:

<b>Input Voltage</b>	32 Volts DC
<b>Input Current</b>	500 mA
<b>Output Voltage, Bulk Charge</b>	28.4 Volts DC
<b>Minimum Battery Voltage for Charger Startup</b>	22 Volts
<b>Enclosure</b>	ABS plastic
<b>LEDs</b>	3
<b>Exterior DC Input Cable to the Reel</b>	10 feet
<b>Retractable Cable with the Reel</b>	38 feet
<b>Battery Cable with Quick Disconnect to Lugs &amp; Clamps</b>	4 feet
<b>Battery Cable with Quick Disconnect to HD Plug</b>	2 feet