

24-Volt Grid System

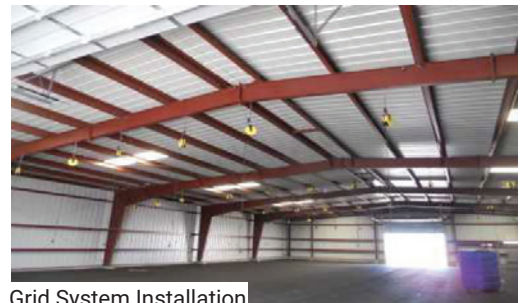
Part #: 735X646

NSN: 6130-01-497-0966

Description:

The Grid System is a 24-Volt electrical shelter power system with power supply, wiring, conduits, junction box, drop chains and other components. This flexible power system can be configured to fit the shape and size of your shelter up to 5000 square feet and powers as many as thirty 24-Volt Drop Pulse and Charge units in either temporary or permanent shelters. The size of the shelter will determine whether you need one or more grid systems.

- Input power is supplied by existing 85-265 VAC power line through a power cord.
- Includes VAC to VDC power supply (with standard 3 prong plug), junction box, wiring, conduits, wire connectors, mounting hardware, drop chains, and much more.
- Input power required, 85-265 VAC, Output 30VDC.
- Capable of supporting up to 30 drop down reels.



Grid System Installation

Specifications:

Input Voltage	Power supplied by existing 85-225VAC power line through a power cord
Number of Drops	30
Coverage	Designed to cover 5000 square feet
Warranty	1-Year Limited Warranty

24-Volt Drop Pulse & Charge Reel

Part #: 735X645

Model #: 24V REEL

NSN: 6130-01-497-0971

Description:

For use with above Grid System: Charges & maintains 24-Volt lead-acid batteries.

- Microprocessor controlled, monitors and charges as needed.
- Never overcharges, LEDs indicate charge status.
- Utilizes patented high frequency Pulse Technology.
- Retractable 38' cable with a quick disconnect connection.
- 3 options for connecting to batteries:
NATO connection, clamps, or bolt on lug connection.



Specifications:

Input Voltage	32 Volts DC
Input Current	500 mA
Output Voltage, Bulk Charge	28.4 Volts DC
Minimum Battery Voltage for Charger Startup	22 Volts
Enclosure	ABS plastic
LEDs	3
Exterior DC Input Cable to the Reel	10 feet
Retractable Cable with the Reel	38 feet
Battery Cable with Quick Disconnect to Lugs & Clamps	4 feet
Battery Cable with Quick Disconnect to HD Plug	2 feet