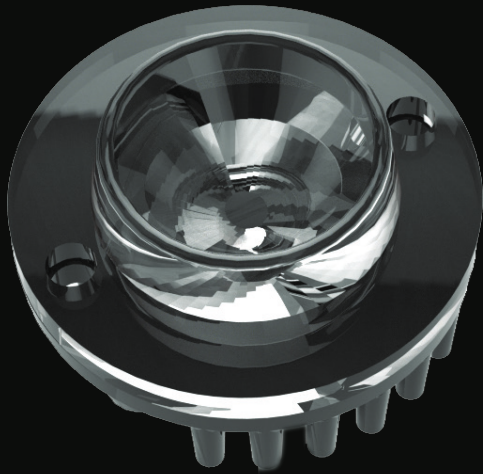




UCD-LED SERIES

DUAL COLOR HIDE-A-WAY LED WARNING & ILLUMINATION



TOMAR's Dual Color Concealable LED's provide the ultimate warning light performance for low-profile and unmarked emergency vehicles. The Concealed System features 6 high intensity LEDs with a waterproof in-line control module. Each module is independently controllable, features multiple flash patterns with user selectable colors, a dimming feature, and will synchronize with up to 10 other lightmodules. This is the most functional low profile UCD in the industry!

Ordering Information

Item	Description
UCD-LED(20/80/360)-xYx	Dual Color (LEDs alternating)
UCD-LED(20/80/360)-x/x	Dual Color (LEDs half/half)

*X=LED color Amber=A Blue=B Red=R White=W Green=G

Specifications

Item	Description
UCD-LED20 dimensions	1.5" Dia x .5" flange - .50" optic (1" hole)
UCD-LED80 dimensions	1.5" Dia x .5" flange - .45" optic (1" hole)
UCD-LED360 dimensions	1.5" Dia x .5" flange - .7" optic (1" hole)
Input Current	.5 a / 12Vdc .3 a / 24Vdc
Input Voltage Range	12/24 Vdc
Operating Temperature Range	-40°C to +70°C

- Ultra-high intensity LEDs
- Multiple user selectable flash patterns
- 3 Programmable Modes
- 6 Single Color or Split 3/3 Dual Color Dominating LEDs
- Available in red, blue, green, amber and white combinations
- Rated IP67
- 5 year warranty

Black or Chrome Bezels Sold Separately

