



Revolution

WARNING & ILLUMINATION



REVOLUTION WARNING

TOMAR's award-winning Revolution Warning Series is the most innovative warning light on the market. In addition to all the state-of-the-art features found in the award-winning Revolution Series, TOMAR's clear vision optics offer a unique advantage in a NFPA or EMS/Triple K warning package. By focusing the lumens away from the emergency vehicle and further down the road, the result is increased visibility to motorists and reduced night blindness for first responders working directly around the vehicle. This is accomplished by focusing the lumens in a horizontal plane, and eliminating stray vertical warning light. Emergency warning lights should be seen from a distance, and not focused up close. TOMAR Revolution Warning Series lights are available in single, dual, and tri-color configurations, and can be equipped with either SAE or European ECE65 optics. Because even the dual and tri-color lights are SAE compliant, any warning light can transform into an additional scene light, no matter where it is. This combination of technology is unlike anything the industry has ever seen before for NFPA or EMS/Triple K compliant warning packages. This is why the revolution series has continued to win awards since its release.

FEATURES & BENEFITS

- **Dual mode, multi-purpose lighting in 1 lamp for extreme versatility and safety.**
- **High Intensity warning and work LED lights**
- **Single, Dual or Tri Color options available**
- **Wide Angle Optical Lens for Maximum light output**
- **The lens optics will increase warning distance while reducing stray light into the eyes of first responders while on scene.**
- **Programmable as an intelligent lamp, or connected to an existing control system**
- **SAE/EC65 Compliant & Meets CA Title 13 & also NFPA 1901 and 1906**
- **Surface Mounted**
- **Built in venting system**
- **Patented waterproof seal**
- **No Hassle 5 Year Warranty**





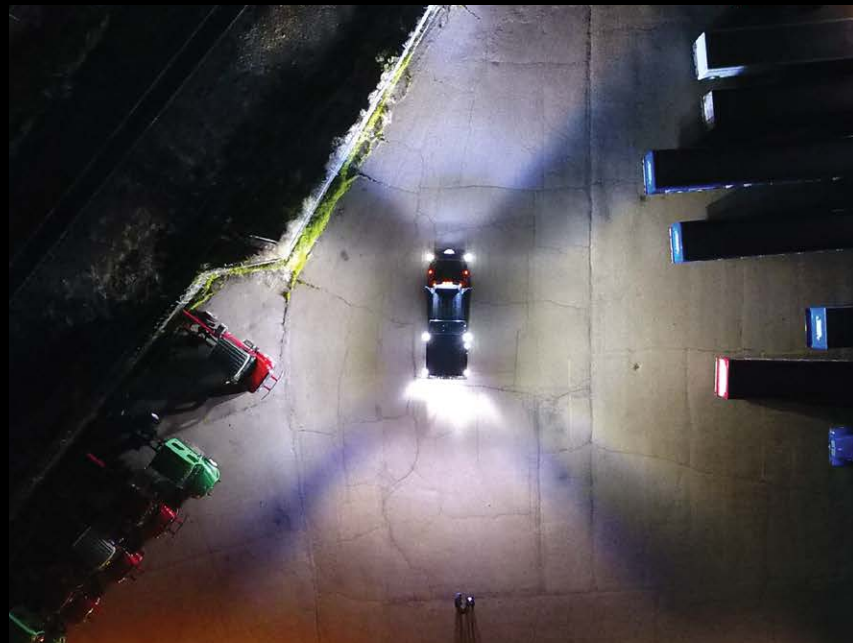
REVOLUTION ILLUMINATION

TOMAR's award-winning Revolution Illumination Series is the most cutting edge scene light on the market and takes the guesswork out of lighting up your scene. In addition to all of the standard features of TOMAR's Revolution series, the efficient Clear Vision Optic system produces more usable light and optimized performance from each lumen. To help demonstrate this, we put the TOMAR illumination series against some of the leading competitors 7 x 9" tilt down scene lights which cost over twice as much. From above, you can see the TOMAR Revolution Series' uncompromising performance. By combining this type of efficient performance with TOMAR's patented vibration welding sealing process, your department gets long lasting reliable performance with less electrical strain to the vehicle. Combined with a 5-year warranty and assembled in Gilbert, Arizona, TOMAR's Revolution Illumination Series is the clear choice for your scene.



FEATURES & BENEFITS

- Extreme scene illumination to make your scene safe
- Internal optics for maximum scene illumination without need to angle lightheads
- Surface mounted to eliminate the need to make cutouts in your vehicle
- Optics available in flood, spot or 13° angled flood
- 12 or 24 of the latest, most reliable, high intense & highly efficient LEDs
- Chrome & black bezels available for a finished, professional appearance
- No UV light emission that attracts bugs or insects
- Patented waterproof seal
- No Hassle 5 Year Warranty
- The efficient Clear Vision Optic system produces more usable light and optimized performance from each lumen



MULTIFUNCTION REVOLUTION

The Revolution™ MultiFunction Series (mfR) fuses award winning warning and award winning illumination into 1 easy to install lighthouse. Reducing installation and operating costs with its patented waterproof seal and venting design, the mfR will help you reduce chaos responding to and working dangerous scenes. The mfR features single or dual color warning and an independently operated intense 13-degree tilt down scene light in the 7X9 series, the 3X7 series has either a 13-degree or 26-degree tilt down scene light. The mfR was specifically designed for you.

In 2017, EMS World Awarded TOMAR and the Revolution™ Series their Most Innovative Warning and Illumination Product Award, and it just got better!

**Available Sizes:
3"x7" and 7"x9"**



FEATURES & BENEFITS

- Dual Mode, Multi-Purpose Warning and Illumination in 1 lamp for extreme versatility and safety
- The ONLY light series with a patented, waterproof seal
- Built in venting system that allows unwanted elements to quickly escape
- Specially designed optics to direct light where you need it
- Single or Dual Color Warning Configurations with Mode 1 and Mode 2 programmability
- SAE and EC65 Compliant & Meets CA Title 13
- Meets NFPA Standards with only 2 lamps per zone
- Wide angle lens to maximize visibility
- Over 1,000+ flash pattern combinations
- Surface mounted
- Built in Venting System
- Patented Waterproof Seal
- No Hassle 5 Year Warranty

NFPA PRE-PROGRAMMED PAIRS

SMARTER, MORE CAPABLE LIGHTS: READY-TO-INSTALL

In any industry, change always takes time. But change is necessary when it comes to technology. TOMAR's commitment to the Fire and EMS Communities involves bringing safer, more innovative technology to those who answer the call, and those whose lives depend on them.

TOMAR Lightheads such as the Revolution Series feature Dual-Mode abilities, to double as extra work light when called upon. To help vehicle manufacturers adapt this new technology, TOMAR offers several "Pre-Programmed" version of our extremely capable lights. This helps users and OEMs alike choose the correct part based on what they want the lamp to do. These are broken up into the following categories:

Externally or Self-Controlled Lights: If the vehicle has a centrally located light-flasher in place, TOMAR's lamps can be ordered in a steady-burn, or "direct-control", mode. This allows the lamp to be controlled by an external 12-24v flasher. These are available in single, and dual-color lamps.

Dual-Mode: These Self-Controlled lamps are designed to do TWO jobs, from ONE lighthouse. This means any TOMAR 3x7, 4x6, or 7x9 inch lamp can be a Warning Light AND fully override as a Scene Light, with just the flick of a switch!

Two-Stage Warning Lamps: These Self-Controlled lamps can either flash two speeds, or two sets of colors depending on the user's preference. Imagine forward-facing lights which flash Red and White while responding (calling for right-of-way) to the scene, then once there, flash only Red when blocking the right-of-way.



Revolution
WARNING & ILLUMINATION

Unsealed Mounting Holes

Keeps over tightening and hydrocarbons from damaging seal

Patented Seal Technology
US PAT 8,092,044 & US PAT 8,828,242

SEALED AREA

KEEPS MOISTURE OUT

Venting System

Allows unwanted elements to easily flow out of the unsealed area

STANDARD PARTS LIST

**= Lamp Size (37=3X7, 46=4X6, 79=7X9), x= Color (A-Amber, B-Blue, R-Red, W-White, G-Green)

SCENE ILLUMINATION

R**L-13	High Output LED Scene Light - 13 tilt down & 85° flood
R**L-F	High Output LED Scene Light - 85° flood
R**L-S	High Output LED Scene Light - 6.5° spot

WARNING- SINGLE COLOR

<i>SAE Compliant Optics</i>	
R**L-W-x	Single Color LED Warning
R**CL-W-x	Single Color LED Warning w/Colored Lens
<i>European/ECE 65 Compliant Optics</i>	
R**L-E-x	Single Color Wide LED Warning
R**CL-E-x	Single Color Wide LED Warning w/Colored Lens

WARNING - SPLIT LEFT/RIGHT

<i>SAE Compliant Optics</i>	
R**LL-W-xx	Split L/R LED Warning
<i>European/ECE65 Compliant Optics</i>	
R**LL-E-xx	Split L/R LED Warning

WARNING - SPLIT TOP/BOTTOM

<i>SAE Compliant Optics</i>	
R**LV-W-xx	Split T/B LED Warning
<i>European/ECE65 Compliant Optics</i>	
R**LV-E-xx	Split T/B LED Warning

WARNING - SPLIT DIAGONAL

<i>SAE Compliant Optics</i>	
R**LX-W-xx	Split D1/D2 LED Warning
<i>European/ECE65 Compliant Optics</i>	
R**LX-E-xx	Split D1/D2 LED Warning

MULTIFUNCTION REVOLUTION

R(37/79)LV13-xW	Single Color Warning and 13° tilt down LED Scene Light
R(37/79)LVD13-xxW	Dual color Warning and 13° tilt down LED Scene Light

DOT COMPLIANT MODELS

R**L-STT	Stop/Tail - Meets Department of Transportation Requirements
R**L-TURN	Amber Turn Lamp - Meets Department of Transportation Requirements

DUAL WARNING- FULL LAMP DUAL COLOR

<i>SAE Compliant Optics</i>	
R**LD-W-xx	Dual Color LED Warning
<i>European/ECE65 Compliant Optics</i>	
R**LD-E-xx	Dual Color LED Warning

TRI WARNING - COLOR 1&2 SPLIT L/R - COLOR 3 FULL LAMP

<i>SAE Compliant Optics</i>	
R**LLD-W-xxx	Tri Split L/R Color LED Warning
<i>European/ECE65 Compliant Optics</i>	
R**LLD-E-xxx	Tri Split L/R Color LED Warning

TRI WARNING - COLOR 1&2 SPLIT T/B - COLOR 3 FULL LAMP

<i>SAE Compliant Optics</i>	
R**LVD-W-xxx	Tri Split T/B Color LED Warning
<i>European/ECE65 Compliant Optics</i>	
R**LVD-E-xxx	Tri Split T/B Color LED Warning

TRI WARNING - COLOR 1&2 DIAGONAL SPLIT - COLOR 3 FULL LAMP

<i>SAE Compliant Optics</i>	
R**LXD-W-xxx	Tri Split D1/D2 Color LED Warning
<i>European/ECE65 Compliant Optics</i>	
R**LXD-E-xxx	Tri Split D1/D2 Color LED Warning

NFPA PRE-PROGRAMMED PAIRS PARTS LIST

WARNING ONLY

R**-W-x-01	Single Color Warning Phase 0
R**-W-x-02	Single Color Warning Phase 1
R**D-W-xx-03	Dual Color Warning Phase 0
R**D-W-xx-04	Dual Color Warning Phase 1

MULTIFUNCTION REVOLUTION

R(37/79)LV13-xW-03	Single Color Warning Phase 0 and 13° tilt down LED Scene Light
R(37/79)LV13-xW-04	Single Color Warning Phase 1 and 13° tilt down LED Scene Light
R(37/79)LVD13-xxW-01	Dual Color Warning Phase 0 and 13° tilt down LED Scene Light
R(37/79)LVD13-xxW-02	Dual Color Warning Phase 1 and 13° tilt down LED Scene Light

DUAL MODE WARNING WITH SCENE OVERRIDE

R**D-W-xW-01	Single Color Warning Phase 0 with white Scene Override
R**D-W-xW-02	Single Color Warning Phase 1 with white Scene Override

EXTERNALLY CONTROLLED LAMPS

R**-W-x=11	Single Color Steady Burn
R**D-W-xx-11	Dual Color Steady Burn
R**LV13-xW-11	Single Color Steady Burn Multifunction
R**LVD13-xxW-11	Dual Color Steady Burn Multifunction

BEZELS

R**-BZ-B	Surface Mount Black Lexan Bezel
R**-BZ	Surface Mount Chrome Bezel
R(37/46)-BZ3-B	Three Lamp Surface Mount Black Lexan Bezel
R(37/46)-BZ3	Three Lamp Surface Mount Chrome Bezel
R46-BZ4-B	4X6 Four Lamp Surface Mount Black Lexan Bezel
R46-BZ4	4X6 Four Lamp Surface Mount Chrome Bezel

Additional pre-configured part numbers available as pre-programmed pairs with different features. See tomar.com for more details.



TOMAR ELECTRONICS, INC.
2100 W. OBISPO AVE
GILBERT, AZ 85233 USA
TEL: 800-338-3133
FAX: 800-688-6627