



Under Carriage PIU20UC16-XX

Available in packages of 2 or 4 sets of RECT16s and rugged under vehicle mounts to increase the side warning visibility. Also available with RECT14s (PIU20UC14-XX).



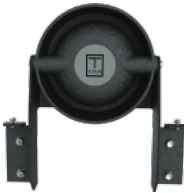
Rear Side Windows PIU20-RS-16-XX

Perfectly placed powerful tint busting warning for one of the most vulnerable parts of the vehicle, which uses the high power RECT 16 series. The easy to install interior bracket eliminates flashback into the passenger compartment.



Side Mirrors PIU20-SM-R14-XX

Sleek, but powerful mirror solutions that are easy to install! Dual-mode technology allows for increased officer safety!



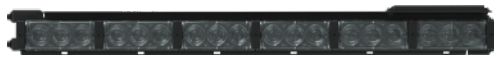
Siren Speaker PIU20-SP-SPK100

Easy to install no drill 100W speaker bracket and speaker designed to use factory OEM mounting points.



License Plate PIU20-LP-TH-XXX

Tri color iLEDs mounted on a sturdy license plate bracket that will add extra warning and illumination safety to you and your vehicle. This multi function, multi color add-on can give you added rear tri color warning light, additional brake lights, extra white light illumination when backing, extra rear work lights, and another warning mode all in 1 easy to install product. Also available in dual color (PIU20-LP-DH-XX).



PIU20-GRD-HP-XX



PIU20-GR16-XX

Grille Warning & Illumination PIU20-GRD-HP-XX

Finally! A powerful dual color warning and illumination solution for the front lower zone that utilizes the existing space on your vehicle. Six powerful 12-LED dual color modules will not only help you clear the way, once you get on scene the powerful takedown function will provide a curtain of light to protect you and help you see beyond what you saw before. Available in Single Color High & Low Power (PIU20-GRS-HP-XX, PIU20-GRS-LP-XX).



TOMAR Siren 948L-Siren-R

948L digital siren and control panel features six programmable function switches, a three position progressive mode switch allowing Jump To Mode™ activation as well as a traffic direction switch for use with lightbars equipped with the traffic direction option or arrow sticks. The 948 has a comfortable rotary switch to select between siren tones or RRB. The control panel is backlit with LED indicators for easy identification and features a spill resistant housing.



Carson Siren SC-411RS-Elite Force

The Carson SC-411RS Elite Force single tone siren is one in a series of sirens developed for smaller spaces with the same options as a full console unit. This new remote siren introduces the new QuickClone® duplication technology making it easy to transfer option settings from one unit to another without the need for an external computer. The Elite Force also features a Splash resistant rubberized face with built-in push button switches and liquid repelling actuator flanges that allows for safe hydration inside the vehicle!



License Plate Trim PIU20-LPT-16-XX

We have your back! Powerful rear trim solutions that are easy to install! Dual-mode technology allows for increased attention-getting safety! Comes as a pair.



Rear Slim Line Lightbar PIU20-UH-R16-XX

Increase your visibility to approaching drivers with rear hatch lighting utilizing the RECT16 series! We always have your back!



Lift Gate Lighting PIU20-LG-R16-XX

When the lift gate is up on your SUV, you can still be seen with lift gate lighting using the RECT16 series. We have you covered!



Front/Rear Interior Spider Lightbar

SPF10T-XX-XP20 (Front)

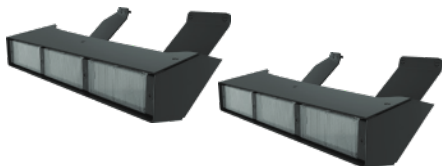
SPR12-XX-VVYY (Rear)

The Spider High Intensity, low profile, interior LED lightbar is a full featured bar with the light output of a full sized exterior lightbar. Designed to mount in the upper front windshield or rear deck and customized for all popular emergency response vehicles the low profile design is perfect for undercover and slick top vehicles. The shroud fits snugly along the contour of the windshield to prevent flashback. Ten (10) specially designed high power 6 LED modules, two 45° intersection clearing modules plus two, adjustable angle, flashing takedown modules insure optimum light output even through heavy window tint for forward facing warning. We also have your back with twelve (12) specially designed high power 6 LED modules that includes a traffic advisor function for your rear safety.



970L Scorpion Lightbar

The most rugged and reliable lightbar in the industry, just got more powerful! The low-profile, modern extruded aluminum design lets you take the Scorpion on or off road! The 970L lightbar includes many scalable features such as standard or high power LED single color warning modules, dual color warning modules, and takedown modules that allow you to see beyond what you saw before.



Rear Exterior SUV Lightbar SPI-XP2002-XX

The Spider Rear SUV lightbar is a dual color warning light system that seamlessly integrates the power of a lightbar into the rear body of an SUV. The Spider Rear SUV lightbar is uniquely designed to conform to the contour of police SUV's and provide the most effective light output available without compromising rear window visibility



ADD ONS

TRX Tactical Series

The TRX Tactical series lightbars combine the power of the TRX lights with Tomar's high intensity warning lights. The TRT series includes all the features of the TRX series lightbars plus warning modules in Amber, Blue, Red or Green. Models that comply with SAE, CCR 13, and ECE 65 are available!



iLED Series

Dominate your safety using warning, illumination, and design! The iLED™ series delivers unprecedented functionality in an extremely rugged platform unlike anything else in the industry. It provides the best option to keep you and your team safe, even in the worst lighting conditions. Adaptable for a variety of horizontal and vertical applications with optics specifically designed for both. The 4 user programmable modes allow an element of safety that has never before been seen!

