



**CLEARING THE WAY TO MOVE YOU FORWARD**



# **EMERGENCY VEHICLE PACKAGES**

[WWW.TOMAR.COM](http://WWW.TOMAR.COM) |     @tomarUSA



### **Powerful Low-Profile Interior Warning**

Designed to be seen, the High Intensity Spider Interior Lightbar Series has the warning output of a full sized exterior lightbar!

### **Optimal Front Zone Warning and Illumination**

See beyond what you saw before with the TRX Tactical Series and the multi-function iLEDs that creates a 220 degree range of Warning and Illumination!

### **Low-Profile Easy to Mount Grille Solutions**

No drill warning, illumination, and siren speaker brackets utilize OEM mounting points to make your grille install easy and more reliable than ever before.



**Scorpion Lightbar Series**

The most rugged and reliable Warning and Illumination lightbar for first responders just got more powerful!

**Side Mirror Warning**

High power, dual mode warning that helps keep you safe at every angle.

**Powerful Low-Profile Interior Warning**

We've got your six you so can be seen from miles away!

**Rugged License Plate Bracket**

Warning and Illumination just got more functional!

**Lower Side Zone Warning and Illumination**

Extremely rugged lower zone warning and illumination solidifies a 360-degree Envelope of Safety.

**Rear Side Window Warning**

Remove vulnerability and increase visibility with tint busting power!

**TOMAR**

# FORD EXPLORER

## **Under Carriage** PIU-UC-R16

Available in packages of 2 or 4 sets of RECT16s and rugged under vehicle mounts to increase the side warning visibility. Also available with RECT14s (PIU-UC-R14).

## **Rear Hatch** PIU-UH-R14

Powerful recessed RECT14s that take ownership of your safety when the rear hatch is open!

## **Grille Warning** PIU-GR-R16

Increase your lower zone warning with this easy to install grille solution. The RECT16 has proven to be a powerful warning light for first responders across the globe. Its dual-mode technology increases your safety and provides a long lasting, waterproof solution.

## **Rear Side Windows** PIU-RS-200S

Perfectly placed powerful tint busting warning for one of the most vulnerable parts of the vehicle, which uses the updated high power 200s series. The easy to install interior bracket eliminates flashback into the passenger compartment. Also available with RECT16s (PIU-RS-R16)

## **Side Mirrors** PIU-SM-R14

Sleek, but powerful mirror solutions that are easy to install! Dual-mode technology allows for increased officer safety!

## **Siren Speaker** PIU-SP-SPK100

Easy to install no drill 100W speaker bracket and speaker designed to use factory OEM mounting points.

## **License Plate** PIU-LP-T970H

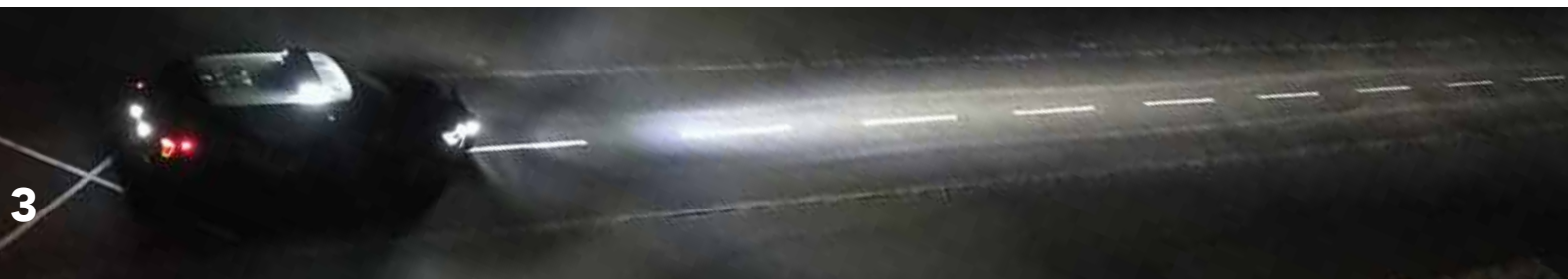
Tri color iLEDs mounted on a sturdy license plate bracket that will add extra warning and illumination safety to you and your vehicle. This multi function, multi color add-on can give you added rear tri color warning light, additional brake lights, extra white light illumination when backing, extra rear work lights, and another warning mode all in 1 easy to install product. Also available in dual color (PIU-LP-D970H) and with RECT14s (PIU-LP-R14).

## **Grille Warning and Illumination** PIU-GRD-SLS

Finally! A powerful dual color warning and illumination solution for the front lower zone that utilizes the existing space on your vehicle. Six powerful 12-LED dual color modules will not only help you clear the way, once you get on scene the powerful takedown function will provide a curtain of light to protect you and help you see beyond what you saw before. Available in Single Color (PIU-GR-SLS).

## **TOMAR Siren 948L-Siren-R**

948L digital siren and control panel features six programmable function switches, a three position progressive mode switch allowing Jump To Mode™ activation as well as a traffic direction switch for use with lightbars equipped with the traffic direction option or arrow sticks. The 948 has a comfortable rotary switch to select between siren tones or RRB. The control panel is backlit with LED indicators for easy identification and features a spill resistant housing.





## Carson Siren SC-411RS-Elite Force

The Carson SC-411RS Elite Force single tone siren is one in a series of sirens developed for smaller spaces with the same options as a full console unit. This new remote siren introduces the new QuickClone® duplication technology making it easy to transfer option settings from one unit to another without the need for an external computer. The Elite Force also features a Splash resistant rubberized face with built-in push button switches and liquid repelling actuator flanges that allows for safe hydration inside the vehicle!

## Front/Rear Interior Spider Lightbar

### SPDF10T-EXP (Front)

### SPDR12-EXP17 (Rear)



The Spider High Intensity, low profile, interior LED lightbar is a full featured bar with the light output of a full sized exterior lightbar. Designed to mount in the upper front windshield or rear deck and customized for all popular emergency response vehicles the low profile design is perfect for undercover and slick top vehicles. The shroud fits snugly along the contour of the windshield to prevent flashback. Ten (10) specially designed high power 6 LED modules, two 45° intersection clearing modules plus two, adjustable angle, flashing takedown modules insure optimum light output even through heavy window tint for forward facing warning. We also have your back with twelve (12) specially designed high power 6 LED modules that includes a traffic advisor function for your rear safety.



## 970L Scorpion Lightbar

The most rugged and reliable lightbar in the industry, just got more powerful! The low-profile, modern extruded aluminum design lets you take the Scorpion on or off road! The 970L lightbar includes many scalable features such as standard or high power LED single color warning modules, dual color warning modules, and takedown modules that allow you to see beyond what you saw before.



## ADD ONS

### TRX Tactical Series

The TRX Tactical series lightbars combine the power of the TRX lights with Tomar's high intensity warning lights. The TRT series includes all the features of the TRX series lightbars plus warning modules in Amber, Blue, Red or Green. Models that comply with SAE, CCR 13, and ECE 65 are available!



### iLED Series

Dominate your safety using warning, illumination, and design! The iLED™ series delivers unprecedented functionality in an extremely rugged platform unlike anything else in the industry. It provides the best option to keep you and your team safe, even in the worst lighting conditions. Adaptable for a variety of horizontal and vertical applications with optics specifically designed for both. The 4 user programmable modes allow an element of safety that has never before been seen!





### **PIU MARKED (BEST)**

**970L-49D3-0701** 49" 360 Degree Dual Color Scorpion lightbar with (2) High Power TDs with built in traffic advisor. Secondary Front Color is White and the Secondary Rear Color is Amber

**PIU-GRD-SLS** Dual Color warning and illumination 6 module behind the grille lightbar

**PIU-LP-T970H** (1) License Plate bracket with (2) tri-color iLED lights

**PIU-RS-200S** (2) Rear side window brackets that include (2) high power 200S lights

**PIU-SM-R14** (2) RECT14s with (2) mirror mounts

**PIU-SP-SPK100** (1) SPK100 easy-to install mount and (1) SPK100 100 W Speaker

**PIU-UC-R16-4** (4) Rugged Under Carriage mounts with (2) RECT16s per mount

**PIU-UH-R14-2** (2) RECT14s with (2) Rear Hatch mounts

**948L-SIREN-R** (1) 948 Siren System; includes control panel, amp, and mic

### **PIU MARKED (REALLY GOOD)**

**970L-4908-0701** 49" Front and Rear High Power Scorpion lightbar with (2) High Power TDs with built in traffic advisor

**PIU-GR-R16** (2) RECT16s with (2) easy-to-install grille mount

**PIU-LP-R14** (1) License Plate bracket with (2) RECT14s

**PIU-RS-R16** (2) Rear side window brackets that include (2) RECT16s

**PIU-SM-R14** (2) RECT14s with (2) mirror mounts

**PIU-SP-SPK100** (1) SPK100 easy-to install mount and (1) SPK100 100 W Speaker

**PIU-UC-R14** (2) Rugged Under Carriage mounts with (2) RECT14s per mount

**PIU-UH-R14** (2) RECT14s with (2) Rear Hatch mounts

**948L-SIREN-R** (1) 948 Siren System; includes control panel, amp, and mic



# FORD EXPLORER PACKAGES

## **PIU SLICK TOP (BEST)**

**SPDF10T-EXP** (1) Front Driver and Passenger side low-profile interior lightbar with 60 Warning LEDs and 2 High Power Adjustable Take-down lights

**SPDR12-EXP17** (1) Rear Mounted low-profile interior lightbar with 72 tint busting LEDs

**PIU-GRD-SLS** Dual Color warning and illumination 6 module behind the grille lightbar

**PIU-LP-T970H** (1) License Plate bracket with (2) tri-color iLED lights

**PIU-RS-200S** (2) Rear side window brackets that include (2) high power 200S lights

**PIU-SM-R14** (2) RECT14s with (2) mirror mounts

**PIU-SP-SPK100** (1) SPK100 easy-to install mount and (1) SPK100 100 W Speaker

**PIU-UC-R16-4** (4) Rugged Under Carriage mounts with (2) RECT16s per mount

**PIU-UH-R14** (2) RECT14s with (2) Rear Hatch mounts

**948L-SIREN-R** (1) 948 Siren System; includes control panel, amp, and mic

## **PIU SLICK TOP (REALLY GOOD)**

**SPDF10T-EXP** (1) Front Driver and Passenger side low-profile interior lightbar with 60 Warning LEDs and 2 High Power Adjustable Take-down lights

**SPDR12-EXP17** (1) Rear Mounted low-profile interior lightbar with 72 tint busting LEDs

**PIU-GR-R16** (2) RECT16s with (2) easy-to-install grille mount

**PIU-LP-R14** (1) License Plate bracket with (2) RECT14s

**PIU-RS-R16** (2) Rear side window brackets that include (2) RECT16s

**PIU-SM-R14** (2) RECT14s with (2) mirror mounts

**PIU-SP-SPK100** (1) SPK100 easy-to install mount and (1) SPK100 100 W Speaker

**PIU-UC-R14-2** (2) Rugged Under Carriage mounts with (2) RECT14s per mount

**PIU-UH-R14** (2) RECT14s with (2) Rear Hatch mounts

**948L-SIREN-R** (1) 948 Siren System; includes control panel, amp, and mic

# CHEVROLET TAHOE



## **Under Carriage** TAH17-UC-R16

Available in packages of 2 or 4 sets of RECT16s and rugged under vehicle mounts to increase the side warning visibility. Also available with RECT14s (TAH17-UC-R14).



## **Rear Hatch** TAH17-UH-R14

Powerful recessed RECT14s that take ownership of your safety when the rear hatch is open!



## **Grille Warning** TAH17-GR-R16

Increase your lower zone warning with this easy to install grille solution. The RECT16 has proven to be a powerful warning light for first responders across the globe. Its dual-mode technology increases your safety and provides a long lasting, waterproof solution. Mounting bracket included, but not shown.



## **Rear Side Windows** TAH17-RS-200S

The TAH17-RS-200S uses the updated, high power, 200s series for powerful tint busting warning, perfectly placed to cover one of the most vulnerable areas of the vehicle. The easy to install interior bracket eliminates flashback inside the vehicle. Also available with RECT16s (TAH17-RS-R16)



## **Side Mirrors** TAH17-SM-R14

Sleek but powerful mirror solutions that are easy to install! Dual-mode technology allows for increased officer safety!



## **Siren Speaker** TAH17-SP-SPK100

Easy to install no drill 100W speaker bracket and speaker designed to use factory OEM mounting points.



## **Grille Combo** TAH17-GRD-SLS

A powerful dual color warning, illumination and speaker solution for the front lower zone that utilizes the OEM mounting points on your Tahoe. Uses Four (4) powerful 12-LED dual color lamps.



## **License Plate** TAH17-LP-T970H

Tri color iLEDs mounted on a sturdy license plate bracket that will add extra warning and illumination safety to you and your vehicle. This multi function, multi color add-on can give you added rear tri color warning light, additional brake lights, extra white light illumination when backing, extra rear work lights, and another warning mode all in 1 easy to install product. Also available in dual color (TAH17-LP-D970H) and with RECT14s (TAH17-LP-R14).



## **TOMAR Siren** 948L-Siren-R

948L digital siren and control panel features six programmable function switches, a three position progressive mode switch allowing Jump To Mode™ activation as well as a traffic direction switch for use with lightbars equipped with the traffic direction option or arrow sticks. The 948 has a comfortable rotary switch to select between siren tones or RRB. The control panel is backlit with LED indicators for easy identification and features a spill resistant housing.





## Fog Light Solution TAH17-FL-X970

A perfect fit! These fog lamp replacement modules utilize the powerful iLED (TM) technology and functionality in a perfectly designed rugged bracket meant to fit onto OEM mounting points. Available in both dual color (TAH17-FL-D970) or tri-color (TAH17-FL-T970).



## Carson Siren SC-411RS-Elite Force

The Carson SC-411RS Elite Force single tone siren is one in a series of sirens developed for smaller spaces with the same options as a full console unit. This new remote siren introduces the new QuickClone® duplication technology making it easy to transfer option settings from one unit to another without the need for an external computer. The Elite Force also features a Splash resistant rubberized face with built-in push button switches and liquid repelling actuator flanges that allows for safe hydration inside the vehicle!

## Front/Rear Interior Spider Lightbar

### SPDF10T-EXP (Front)

### SPDR12-EXP17 (Rear)



The Spider High Intensity, low profile, interior LED lightbar is a full featured bar with the light output of a full sized exterior lightbar. Designed to mount in the upper front windshield or rear deck and customized for all popular emergency response vehicles the low profile design is perfect for undercover and slick top vehicles. The shroud fits snugly along the contour of the windshield to prevent flashback. Ten (10) specially designed high power 6 LED modules, two 45° intersection clearing modules plus two, adjustable angle, flashing takedown modules insure optimum light output even through heavy window tint for forward facing warning. We also have your back with twelve (12) specially designed high power 6 LED modules that includes a traffic advisor function for your rear safety.



## 970L Scorpion Lightbar

The most rugged and reliable lightbar in the industry, just got more powerful! The low-profile, modern extruded aluminum design lets you take the Scorpion on or off road! The 970L lightbar includes many scalable features such as standard or high power LED single color warning modules, dual color warning modules, and takedown modules that allow you to see beyond what you saw before.



## ADD ONS

### TRX Tactical Series

The TRX Tactical series lightbars combine the power of the TRX illumination lights with Tomar's high intensity warning lights. The TRT series includes all the features of the TRX series lightbars plus warning modules in Amber, Blue, Red or Green. Models that comply with SAE, CCR 13, and ECE 65 are available!



### iLED Series

Dominate your safety using warning, illumination, and design! The iLED™ series delivers unprecedented functionality in an extremely rugged platform unlike anything else in the industry. It provides the best option to keep you and your team safe, even in the worst lighting conditions. Adaptable for a variety of horizontal and vertical applications with optics specifically designed for both. The 4 user programmable modes allow an element of safety that has never before been seen!



## **TAHOE MARKED (BEST)**

**970L-49D3-0701** 49" 360 Degree Dual Color Scorpion lightbar with (2) High Power TDs with built in traffic advisor. Secondary Front Color is White and the Secondary Rear Color is Amber

**TAH17-GRD-SLS** Dual Color warning and illumination 6 module behind the grille lightbar

**TAH17-LP-T970H** (1) License Plate bracket with (2) tri-color iLED lights

**TAH17-RS-200S** (2) Rear side window brackets that include (2) high power 200S lights

**TAH17-SM-R14** (2) RECT14s with (2) mirror mounts

**SPK100** (1) SPK100 easy-to install mount and (1) SPK100 100 W Speaker

**TAH17-UC-R16-4** (4) Rugged Under Carriage mounts with (2) RECT16s per mount

**TAH17-UH-R14-2** (2) RECT14s with (2) Rear Hatch mounts

**948L-SIREN-R** (1) 948 Siren System; includes control panel, amp, and mic

## **TAHOE MARKED (REALLY GOOD)**

**970L-4908-0701** 49" 360° High Power Scorpion lightbar with (2) High Power TDs and built in traffic advisor

**TAH17-GR-R16** (2) RECT16s with (2) easy-to-install grille mount

**TAH17-LP-R14** (1) License Plate bracket with (2) RECT14s

**TAH17-RS-R16** (2) Rear side window brackets that include (2) RECT16s

**TAH17-SM-R14** (2) RECT14s with (2) mirror mounts

**SPK100** (1) SPK100 easy-to install mount and (1) SPK100 100 W Speaker

**TAH17-UC-R14** (2) Rugged Under Carriage mounts with (2) RECT14s per mount

**TAH17-UH-R14** (2) RECT14s with (2) Rear Hatch mounts

**948L-SIREN-R** (1) 948 Siren System; includes control panel, amp, and mic



## **TAHOE SLICK TOP (BEST)**

**SPDF10T-ETAH17** (1) Front Driver and Passenger side low-profile interior lightbar with 60 Warning LEDs and 2 High Power Adjustable Takedown lights

**SPDR12-TAH17** (1) Rear Mounted low-profile interior lightbar with 72 tint busting LEDs

**TAH17-GRD-SLS** Dual Color warning and illumination 6 module behind the grille lightbar

**TAH17-LP-T970H** (1) License Plate bracket with (2) tri-color iLED lights

**TAH17-RS-200S** (2) Rear side window brackets that include (2) high power 200S lights

**TAH17-SM-R14** (2) RECT14s with (2) mirror mounts

**TAH17-SP-SPK100** (1) SPK100 easy-to install mount and (1) SPK100 100 W Speaker

**TAH17-UC-R16-4** (4) Rugged Under Carriage mounts with (2) RECT16s per mount

**TAH17-UH-R14** (2) RECT14s with (2) Rear Hatch mounts

**948L-SIREN-R** (1) 948 Siren System; includes control panel, amp, and mic

## **TAHOE SLICK TOP (REALLY GOOD)**

**SPDF10T-EXP** (1) Front Driver and Passenger side low-profile interior lightbar with 60 Warning LEDs and 2 High Power Adjustable Takedown lights

**SPDR12-TAH17** (1) Rear Mounted low-profile interior lightbar with 72 tint busting LEDs

**TAH17-GR-R16** (2) RECT16s with (2) easy-to-install grille mount

**TAH17-LP-R14** (1) License Plate bracket with (2) RECT14s

**TAH17-RS-R16** (2) Rear side window brackets that include (2) RECT16s

**TAH17-SM-R14** (2) RECT14s with (2) mirror mounts

**TAH17-SP-SPK100** (1) SPK100 easy-to install mount and (1) SPK100 100 W Speaker

**TAH17-UC-R14-2** (2) Rugged Under Carriage mounts with (2) RECT14s per mount

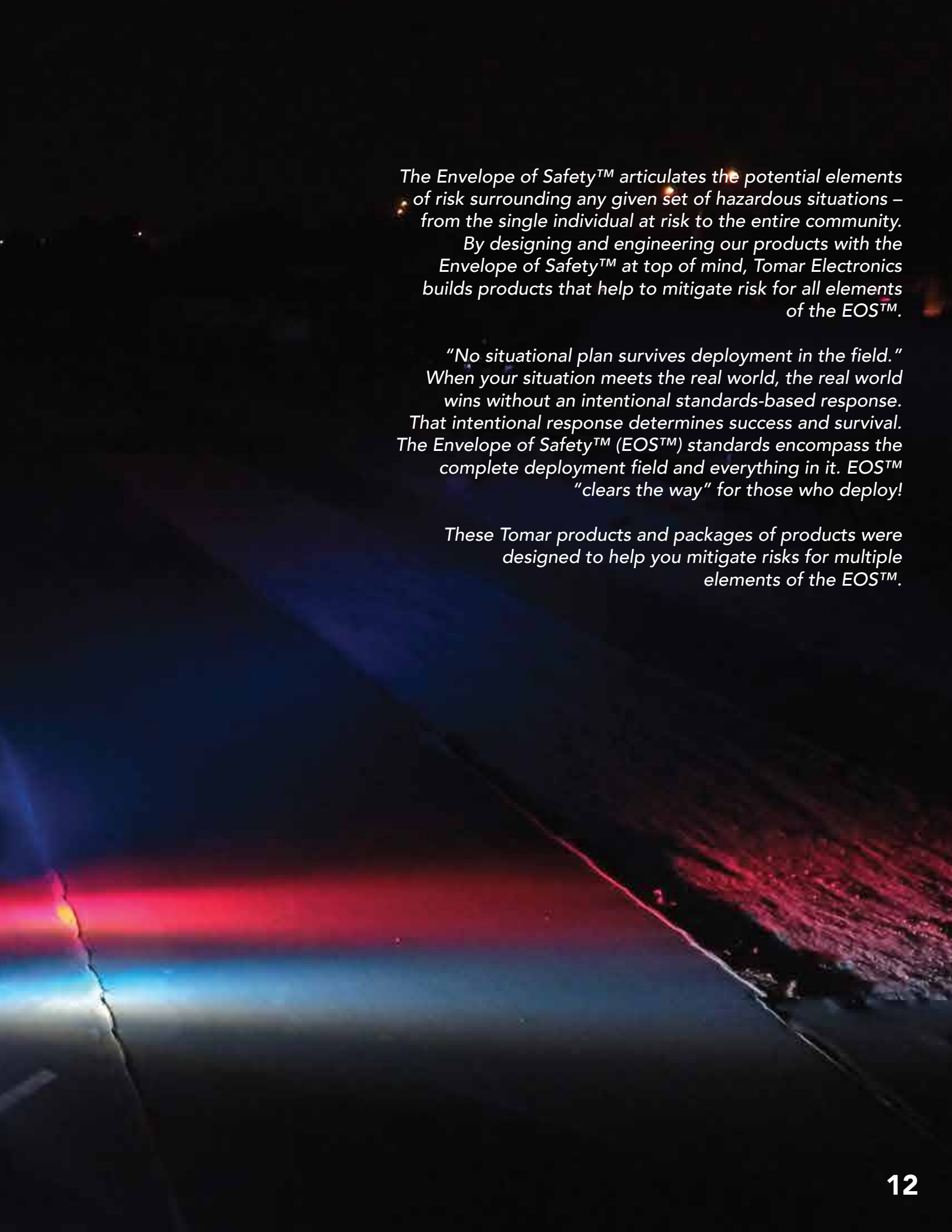
**TAH17-UH-R14** (2) RECT14s with (2) Rear Hatch mounts

**948L-SIREN-R** (1) 948 Siren System; includes control panel, amp, and mic



# **CHEVROLET TAHOE PACKAGES**





*The Envelope of Safety™ articulates the potential elements of risk surrounding any given set of hazardous situations – from the single individual at risk to the entire community.*

*By designing and engineering our products with the Envelope of Safety™ at top of mind, Tomar Electronics builds products that help to mitigate risk for all elements of the EOS™.*

*“No situational plan survives deployment in the field.”  
When your situation meets the real world, the real world wins without an intentional standards-based response. That intentional response determines success and survival. The Envelope of Safety™ (EOS™) standards encompass the complete deployment field and everything in it. EOS™ “clears the way” for those who deploy!*

*These Tomar products and packages of products were designed to help you mitigate risks for multiple elements of the EOS™.*



    @tomarUSA

**TOMAR ELECTRONICS, INC**  
2100 W. OBISPO AVE GILBERT, AZ 85233 USA  
SALES@TOMAR.COM  
480-497-4400