

# 2K24 CATALOGUE



# OWIX

**MOTOCROSS**

**ENDURO**



## COME ORDINARE PASSO A PASSO :

1 - Guarda la prima parte del catalogo e scegli quali prodotti ti interessano, troverai tutte le descrizioni dettagliate del prodotto.

2 - Guarda nella seconda parte del catalogo alcuni esempi di personalizzazione, troverai una serie di pagine con completi personalizzati e successivamente alcuni abbinamenti tra completi e abbigliamento paddock.

3 - Appena ti sei fatto un'idea e hai in mente come vorresti l'abbigliamento del tuo team, contattaci per un preventivo e per la successiva realizzazione del 3D personalizzato di tutto il tuo abbigliamento.



## HOW TO ORDER STEP BY STEP :

1 - Look at the first part of the catalog and choose which products you are interested in, you will find all the descriptions and details of the product.

2 - Look in the second part of the catalog some examples of customization, you will find a series of pages with personalized outfits and then some combinations between suits and paddock clothing.

3 - As soon as you have an idea and you have in mind how you would like the clothing of your team, contact us for a quote and for the realization of the 3D of all your clothing.





**OFF ROAD**



# JERSEYS

## CLASSIC JERSEYS

Code:MMX

**RESISTENZA**  
RESISTANCE



**TRASPIRABILITÀ**  
BREATHABILITY



**ELASTICITÀ**  
ELASTICITY



**PESO**  
WEIGHT



🇮🇹 La nostra maglia versione Classic è il risultato di sei anni di sviluppi. Testata dai nostri piloti di punta per garantire una resistenza sempre maggiore, sia all'abrasione che agli urti, grazie al suo tessuto a nido d'ape. E' una maglia con ottima traspirabilità grazie al tessuto traforato presente sui fianchi e sulla schiena.

🇬🇧 Our classic jersey is a derived jersey six years of development, tested by our top riders to ensure greater resistance both abrasion and impact thanks to its fabric honeycomb. It is a jersey with a very good breathability thanks to perforated back and sides.



## PRO JERSEYS

Code:MPROMX

**RESISTENZA**  
RESISTANCE



**TRASPIRABILITÀ**  
BREATHABILITY



**ELASTICITÀ**  
ELASTICITY



**PESO**  
WEIGHT



🇮🇹 La nostra maglia versione Pro è una maglia sviluppata per il bisogno sempre crescente di elasticità e leggerezza. Testata dai nostri piloti di punta garantisce una mobilità estrema durante la guida. Non la sentirete addosso!

🇬🇧 Our Pro version jersey is a derived jersey developed for the ever-increasing need for elasticity and lightness, tested by our top riders it lacks extreme mobility while driving. You won't feel it on you!





# JERSEYS

## HEAVY JERSEYS

Code:MMXW

**RESISTENZA**  
RESISTANCE



**TRASPIRABILITÀ**  
BREATHABILITY



**ELASTICITÀ**  
ELASTICITY



**PESO**  
WEIGHT



🇮🇹 La nostra maglia versione Heavy è stata sviluppata per l'enduro.

Garantisce una resistenza maggiore sia all'abrasione che agli urti e tagli grazie al suo tessuto da 130 grammi a nido d'ape.

🇬🇧 Our Heavy version jersey is a developed jersey for enduro. It guarantees greater resistance both abrasion and impacts and cuts thanks to its fabric from 130 grams honeycomb.



## TANK TOP

Code:CMX

**RESISTENZA**  
RESISTANCE



**TRASPIRABILITÀ**  
BREATHABILITY



**ELASTICITÀ**  
ELASTICITY



**PESO**  
WEIGHT



🇮🇹 La canotta TANK TOP è un prodotto che viene combinato con la maglia COMPRESSION e che garantisce una ottima traspirabilità e libertà di movimento.

🇬🇧 The TANK TOP is a product that is combined with the COMPRESSION jersey and which guarantees an excellent breathability and freedom of movement.



100% POLIESTERE MADE IN ITALY



# COMPRESSION JERSEYS

## COMPRESSION JERSEYS

Code: AIR

**RESISTENZA**  
RESISTANCE



**TRASPIRABILITÀ**  
BREATHABILITY



**ELASTICITÀ**  
ELASTICITY



**PESO**  
WEIGHT



La maglia Compression, indossata a contatto con la pelle, garantisce massimo assorbimento del sudore e un altissimo flusso d'aria permettendovi di utilizzarla in periodi caldi dell'anno combinandola con la canotta TANK TOP. Può inoltre essere utilizzata come sottomaglia termica nei periodi più freddi.

The Compression jersey, worn in contact with the skin, guarantees maximum sweat absorption and a very high air flow allowing you to use it in hot periods of the year combining it with the TANK TOP. It can also be used as a thermal undermesh in colder periods.



70% LYCRA e 30% POLIESTERE

## SHORT COMPRESSION JERSEYS

Code: AIRCMTB

**RESISTENZA**  
RESISTANCE



**TRASPIRABILITÀ**  
BREATHABILITY



**ELASTICITÀ**  
ELASTICITY



**PESO**  
WEIGHT



70% LYCRA e 30% POLIESTERE



# COMPRESSION JERSEYS

## AIR COMPRESSION JERSEYS

Code: AIRMX

### RESISTENZA

RESISTANCE



### TRASPIRABILITÀ

BREATHABILITY



### ELASTICITÀ

ELASTICITY



### PESO

WEIGHT



🇮🇹 La maglia Air Compression, indossata a contatto con la pelle, garantisce massimo assorbimento del sudore e un altissimo flusso d'aria permettendovi di utilizzarla in periodi caldi dell'anno combinandola con la canotta TANK TOP. Le innovative maniche con tessuto AIR TECH ti danno ancora più traspirabilità.

🇬🇧 The Air Compression jersey, worn in contact with the skin, guarantees maximum sweat absorption and a very high air flow allowing you to use it in hot periods of the year combining it with the TANK TOP. The innovative sleeves with AIR TECH fabric give you even more breathability.



70% LYCRA e 30% POLIESTERE



# PANTS

## CORDURA PANTS

Code:PMXC

**RESISTENZA**  
RESISTANCE



**TRASPIRABILITÀ**  
BREATHABILITY



**ELASTICITÀ**  
ELASTICITY



**PESO**  
WEIGHT



🇮🇹 I nostri pantaloni CORDURA sono perfetti per chi vuole un pantalone duraturo senza però rinunciare al comfort. I suoi inserti elastici fanno sì che il pantalone si adatti ad ogni movimento, mentre le protezioni in pelle sulle ginocchia lo rendono ancora più resistente.

🇬🇧 Our CORDURA pants are perfect for those who want a long-lasting trousers that you don't want anyway give up comfort. In fact, with its elastic inserts makes the pants adapt to every movement. Leather protectors on the knees to make it even more resistant.



## ELASTIC PANTS

Code:PMXE

**RESISTENZA**  
RESISTANCE



**TRASPIRABILITÀ**  
BREATHABILITY



**ELASTICITÀ**  
ELASTICITY



**PESO**  
WEIGHT



🇮🇹 Con il nostro pantalone ELASTIC il piacere sarà tutto nella guida; infatti con il suo tessuto ELASTIC RIBSTOP la mobilità in sella sarà completa. Grazie all'intelaiatura interna in nylon i tagli e le abrasioni non saranno un problema. Buon compromesso per avere un pantalone super leggero (solo 300g +/- 50g) ma tuttavia resistente.

🇬🇧 With our ELASTIC pants the pleasure will be all in the guide; in fact with its ELASTIC RIBSTOP fabric mobility in the saddle will be complete. Thanks to an internal nylon frame cuts and abrasions will not be a problem. It is an excellent compromise to have pants super light (only 300g +/- 50g) and with good endurance.



# MX GLOVES

## LIGHT GLOVES

Code:GMXL

**RESISTENZA**  
RESISTANCE



**TRASPIRABILITÀ**  
BREATHABILITY



**ELASTICITÀ**  
ELASTICITY



**PESO**  
WEIGHT



🇮🇹 Il guanto Light è la nostra proposta più leggera, sarà come non averlo addosso.  
Palmo senza protezioni interne.

🇬🇧 The Light glove is our lightest proposal. It will be like not having him on.  
Palm without internal protections.



## ALL SEASON GLOVES

Code:GMXM

**RESISTENZA**  
RESISTANCE



**TRASPIRABILITÀ**  
BREATHABILITY



**ELASTICITÀ**  
ELASTICITY



**PESO**  
WEIGHT



🇮🇹 Il guanto ALL SEASON vi accompagnerà per tutta la stagione. Grazie al suo tessuto in neoprene sottile, con ottimo scambio tra aria esterna e calore corporeo, avrete una buona protezione d'inverno e una buona traspirazione d'estate.  
Palmo senza protezioni interne.

🇬🇧 The ALL SEASON glove will accompany you throughout the season, thanks to its thin neoprene fabric, with excellent exchange between outside air and body heat, you will have a good protection in winter and good transpiration in summer.  
Palm without internal protections.





# MX GLOVES

## ALLIGATOR GLOVES

Code:GMXW

**RESISTENZA**  
RESISTANCE



**TRASPIRABILITÀ**  
BREATHABILITY




**ELASTICITÀ**  
ELASTICITY




**PESO**  
WEIGHT



 Il nuovo guanto ALLIGATOR vi garantirà protezione alla mano grazie alla nuova tecnologia HEXAGON.

I suoi esagoni silconici ti proteggeranno dagli urti ma allo stesso tempo ti garantiranno massima mobilità seguendo i movimenti della mano.

Palmo rinforzato con un sottilissimo strato di spugna assorbente per proteggere dalla formazione di vesciche sulle mani.

 The new ALLIGATOR glove will guarantee you hand protection thanks to the new HEXAGON technology.

Its silicone hexagons will protect you from shocks but at the same time guarantee you maximum mobility without clumsying in any way, in fact widening they will open like a fan.

Reinforced palm with a very thin layer of absorbent sponge to protect yourself from blistering on your hands.



# JACKETS

## BODY WARMER

Code:BMX

**RESISTENZA**  
RESISTANCE



**TRASPIRABILITÀ**  
BREATHABILITY




**ELASTICITÀ**  
ELASTICITY




**PESO**  
WEIGHT



 Il nostro BODY WARMER smanicato è stato pensato appositamente per gli allenamenti invernali e/o per i warmup durante le gare.

Ti garantirà protezione da freddo e fango durante il giro di ricognizione.

Ha una comoda tasca posteriore e due anteriori.

 Our sleeveless BODY WARMER has been designed specially for winter training or for use in warmup during competitions.

It will guarantee you protection from cold and mud during the reconnaissance tour.

It has a convenient back pocket and two front pockets.



## BODY WARMER WATERPROOF

Code:BMXW

**RESISTENZA**  
RESISTANCE



**TRASPIRABILITÀ**  
BREATHABILITY




**ELASTICITÀ**  
ELASTICITY




**PESO**  
WEIGHT



 Il nostro BODY WARMER WATERPROOF è uno smanicato completamente resistente all'acqua, pensato sia per gli allenamenti che per i lunghi trasferimenti da una speciale all'altra.

Ha una comoda tasca posteriore e due anteriori, sempre waterproof.

 Our BODY WARMER WATERPROOF is a sleeveless completely water resistant, designed for training or for long transfers from one special to another.

It has a convenient back pocket and two front pockets, always waterproof.





# JACKETS

## REMOVE JACKET

Code: JENR

**RESISTENZA**  
RESISTANCE



**TRASPIRABILITÀ**  
BREATHABILITY



**ELASTICITÀ**  
ELASTICITY



**PESO**  
WEIGHT



🇮🇹 La giacca Remove è un ottimo compromesso per l'inverno e per le mezze stagioni. Ciò che la caratterizza sono le maniche removibili tramite due zip.

🇬🇧 The Remove jacket is an excellent compromise for winter and mid-seasons. What characterizes it are the removable sleeves with two zips.



# 2024 NEWS

## TRANSPARENT JACKET

🇮🇹 **COMPLETAMENTE PERSONALIZZABILE**  
CONTATTACI PER MAGGIORI INFO

🇬🇧 **FULLY CUSTOMIZABLE**  
CONTACT US FOR MORE INFO







# TEAM WEAR



# TEAM WEAR

## T - SHIRT

Code:TSCASSUB

**RESISTENZA**  
RESISTANCE



**TRASPIRABILITÀ**  
BREATHABILITY





**ELASTICITÀ**  
ELASTICITY



**PESO**  
WEIGHT



 T - shirt personalizzata per rappresentanza, fatta con tessuto poliestere ad alta traspirabilità.

 Customizable t - shirt for representation; made with a highly breathable polyester fabric.



## POLO

Code:SCASSUB

**RESISTENZA**  
RESISTANCE



**TRASPIRABILITÀ**  
BREATHABILITY





**ELASTICITÀ**  
ELASTICITY



**PESO**  
WEIGHT



 Polo personalizzata per rappresentanza, fatta con tessuto poliestere ad alta traspirabilità.

 Customizable polo for representation; made with a highly breathable polyester fabric.



# TEAM WEAR

## HOODIE

Code:HZIPCASSUB

**RESISTENZA**  
RESISTANCE



**TRASPIRABILITÀ**  
BREATHABILITY





**ELASTICITÀ**  
ELASTICITY



**PESO**  
WEIGHT



 Felpa personalizzata per rappresentanza, fatta con tessuto poliestere ad alta traspirabilità.

 Customizable sweatshirt for representation; made with a highly breathable polyester fabric.





# TEAM WEAR

## SOFTSHELL JACKET

Code:JSCASSUB

**RESISTENZA**  
RESISTANCE



**TRASPIRABILITÀ**  
BREATHABILITY




**ELASTICITÀ**  
ELASTICITY



**PESO**  
WEIGHT



 Giacca personalizzata per rappresentanza, interamente in tessuto softshell.

 Customizable jacket for representation, entirely in softshell.



## WINTER JACKET

Code:WJCASSUB

**RESISTENZA**  
RESISTANCE



**TRASPIRABILITÀ**  
BREATHABILITY




**ELASTICITÀ**  
ELASTICITY



**PESO**  
WEIGHT



 Giacca invernale personalizzabile, completamente trapuntata internamente.

 Customizable winter jacket, completely quilted internally.



# TEAM WEAR

## SHORT PANTS

Code:PSMEC

**RESISTENZA**  
RESISTANCE



**TRASPIRABILITÀ**  
BREATHABILITY




**ELASTICITÀ**  
ELASTICITY



**PESO**  
WEIGHT



 Pantaloncino corto personalizzato ideale per il paddock.

 Customizable short shorts, designed for the paddock.



## MECHANIC PANTS

Code:PLMEC

**RESISTENZA**  
RESISTANCE



**TRASPIRABILITÀ**  
BREATHABILITY





**ELASTICITÀ**  
ELASTICITY



**PESO**  
WEIGHT



 Pantalone lungo personalizzabile, pensato sia per i meccanici che per rappresentanza.

 Customizable long trousers, both for the mechanic and for representation.





**DWIN**

**QUALCHE ESEMPIO 2024**

**SOME 2024 EXAMPLES**



**DWIN**



## ALPHA 1



## ALPHA 2



## ALPHA 3



## ALPHA 4



## ALPHA 5



## ALPHA 6



## STORM 1



## STORM 2



## STORM 3



## STORM 4



## STORM 5



## STORM 6



## LINE 1



## LINE 2



## LINE 3



## LINE 4



## LINE 5



## LINE 6





## FULL 1



## FULL 2



## FULL 3



## FULL 4



## FULL 5



## FULL 6



## FUME 1



## FUME 2



## FUME 3



## FUME 4



## FUME 5



## FUME 6



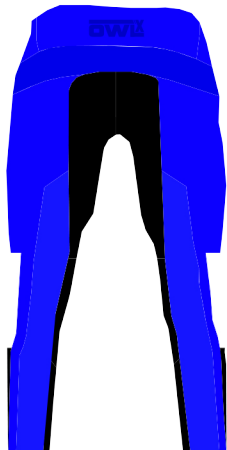
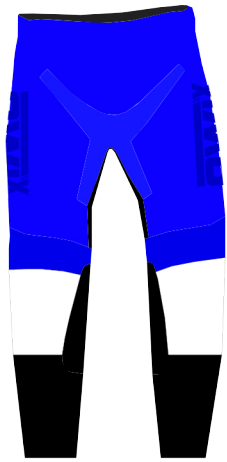




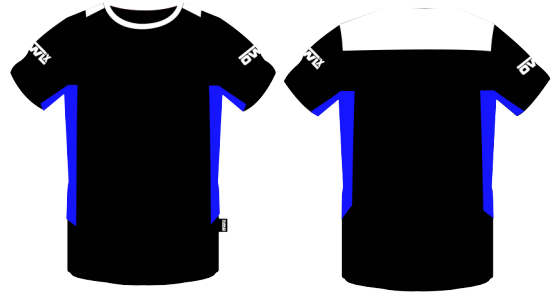
**QUALCHE ABBINAMENTO**  
**SOME MATCHING**

**DWLEX**

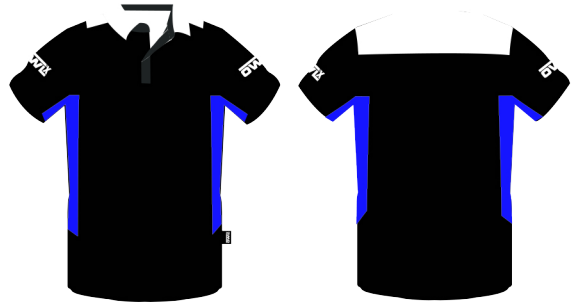
# ALPHA 4



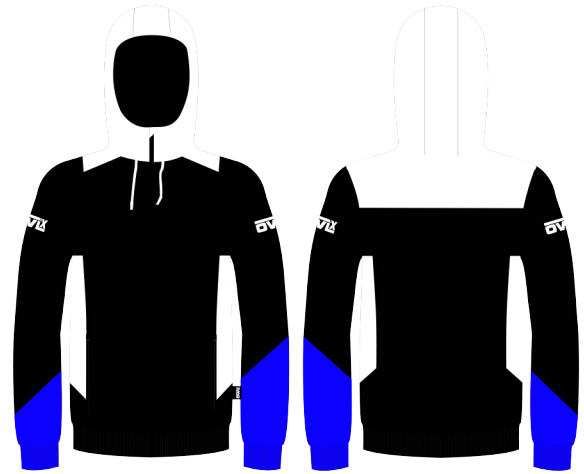
T-SHIRT



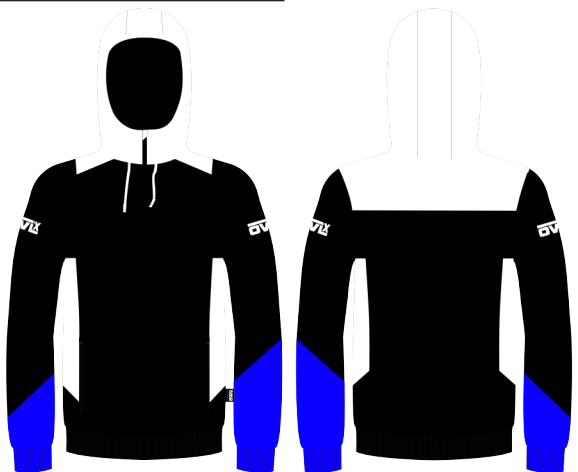
POLO



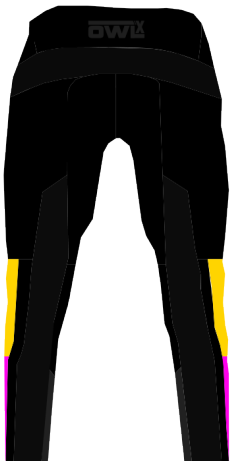
HOODIE



WINTER JACKET



# ALPHA 5



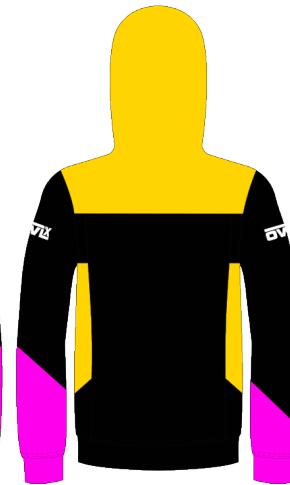
T-SHIRT



POLO



HOODIE

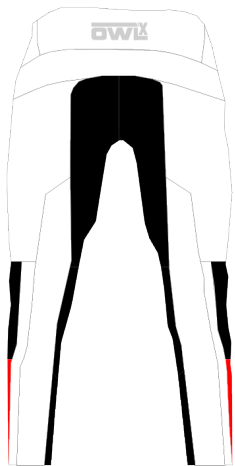
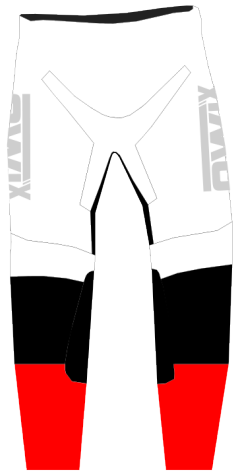


WINTER JACKET





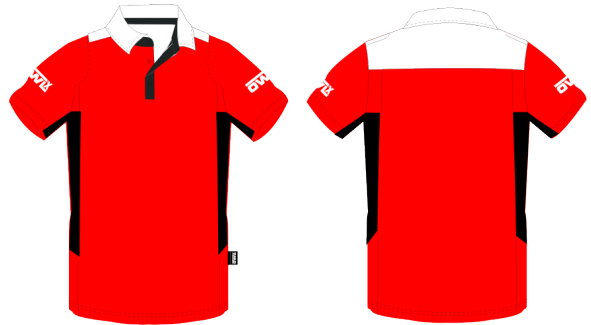
# ALPHA 5



T-SHIRT



POLO



HOODIE



WINTER JACKET



# STORM 1



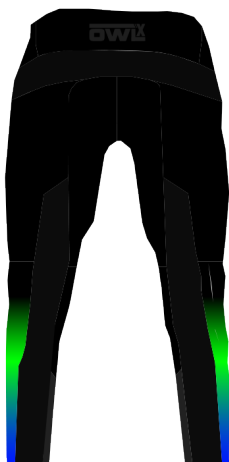
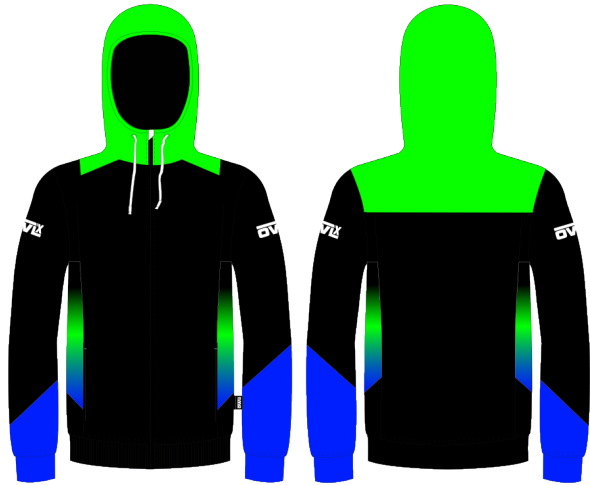
T-SHIRT



POLO



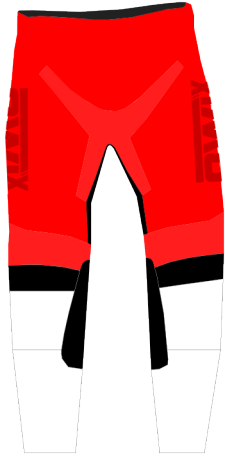
HOODIE



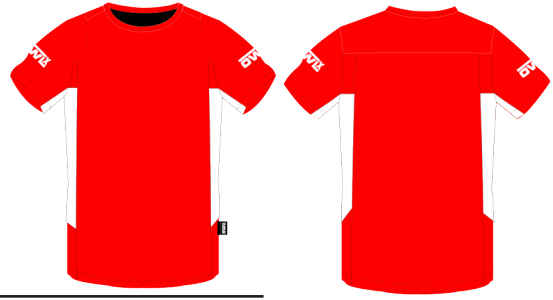
WINTER JACKET



# LINE 3



T-SHIRT



POLO



HOODIE

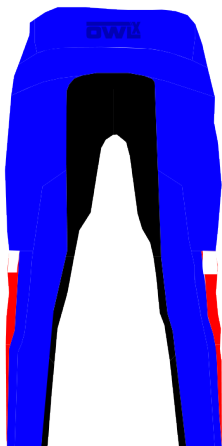
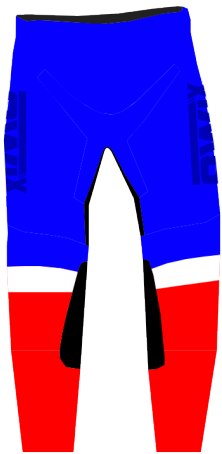


WINTER JACKET

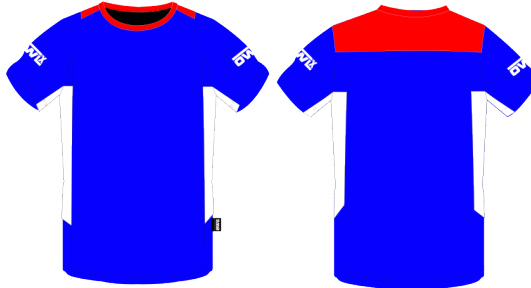




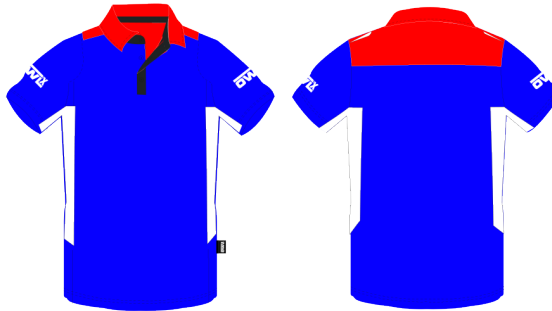
# LINE 6



T-SHIRT



POLO



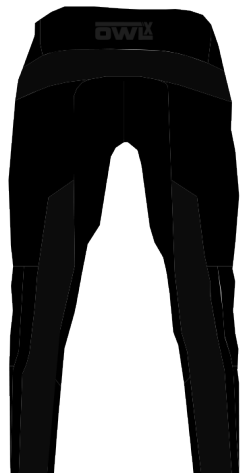
HOODIE



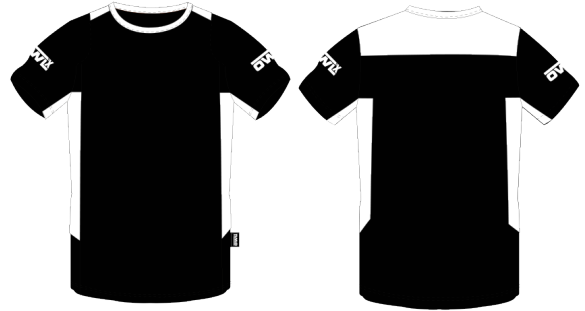
WINTER JACKET



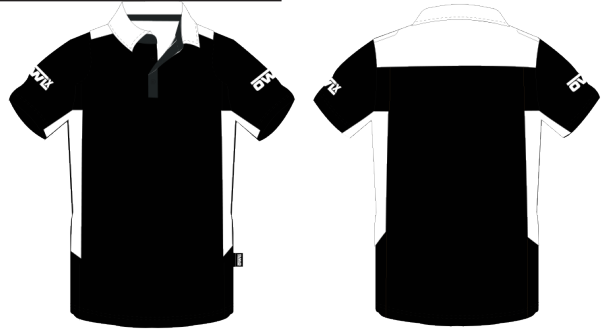
# FULL 1



T-SHIRT



POLO



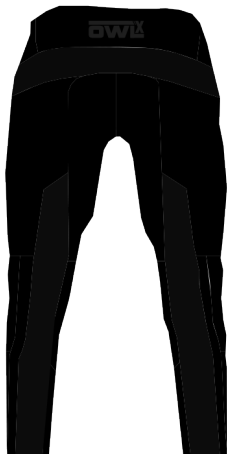
HOODIE



WINTER JACKET



# FUME 1



T-SHIRT



POLO



HOODIE



WINTER JACKET





OWWLX