



BIGSHOT Maxim Concentrate

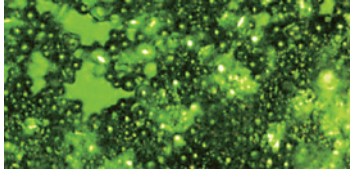
Botanical Agricultural Pest & Mosquito Control

MICRO-FLUIDIZED & MICRO-ENCAPSULATED TIME RELEASED ACTIVES



FIFRA
25b

Grown Organically



Mircoencapsulated time release capsules.

Also Controls:

Various boring insects and chewing insects Beetles Sucking insects, mites, flies, Cotton pests, Moths, Spider mites, Fungus gnats, Leaf webbers, loopers, Leafhoppers, Mealybugs, fleas, ticks, Grubs, Armyworms, Mosquitoes, Whiteflies, Sandflies, Houseflies, Cutworms, Lawn and root grubs, Fruit flies, Bedbugs, Locusts, Midges, Aphids – Root Aphid, Aphids, Ants, Scale insects.

Packaging

- 4 x 128 oz per case
- 12 x 32 oz per case
- 60 x 8 oz per case
- 60 x 4 oz per case

Storage and Disposal:

Store at room temperature. Do not freeze.
Do not reuse the container.
Dispose of in trash or offer for recycling.

PPE: See label directions

Active Ingredients:

Cedarwood Oil 14%
Cinnamon Oil 0.23%
Thyme Oil 0.53%

Inert Ingredients:

Water, Glycerin, Soap, Isopropyl alcohol...85.24%
Total.....100.00%

* Read and follow all labeled instructions

FOR GENERAL AGRICULTURAL USE

What is BIGSHOT Maxim Concentrate?

- BIGSHOT Maxim is a high quality organically grown botanical mosquito and agricultural pest control solution that works. Provides residuals greater than 21 - 30 days even throughout rainy cycles.

Ingredients are from organic sources, not harsh chemicals.

Benefits of BIGSHOT Maxim

- Effective Mosquito Control (adulticide and knock down)
- Effective against mosquito larvae and pupa (no need for multiple chemicals)
- Effective Spider Control
- Safe around pets, the environment, children, and adults when used as directed
- Bee and butterfly friendly (saves beneficial pollinators) when used as directed
- Completely safe around gardens and plants when used as directed
- 21 to 30 days or more residual, even with rain events
- Fresh Botanical scent, unlike synthetic chemicals currently being used
- Extremely effective and safe for aerial spraying when used as directed
- Recognized FIFRA 25(b) Unrestricted GRAS - (generally recognized as safe)

Directions for use of BIGSHOT Maxim Concentrate SHAKE WELL BEFORE AND AFTER DILUTION

Agriculture Pest Control Application: General Row Crop Application:

- Ground rig application rate: Recommended usage rate 0.6 to 0.75 ounces per gallon of spray mix. Use a minimum of 7 gallons per acre to a maximum of 10 gallons per acre of spray mix. Use the higher rate for more dense canopy/foliage and larger insects.
- Aerial application rate: 4 ounces to 5 ounces per acre with 2 to 3 gallons water/spray mix per acre.
- Pests and Molds - Soybeans, Cotton, Wheat – Apply 4 to 5 ounces per acre diluted into 7 gallons of water/spray mix per acre. Use the higher rate for denser canopy and larger insects.
- For vegetables, citrus, and specialty crops contact NewFields Ag™ or dealer for application rates
- Psyllid (Citrus Greening) dilute ¾ ounce per gallon applied twice at 2 weeks apart.
- Pests and molds- dilute ¾ ounce of BIGSHOT per gallon dilution, however begin at 1½ ounce per gallon for fruit and vegetable crops, it may not need ¾ ounce.
- Pests - HEMP dilute ¾ ounce into 10 gallons water for pest control.

Animal Application:

- Contact NewFields Ag™ or dealer for application rates to farm facilities and farm animals such as cattle, horse, swine, and other animals.
- Contact NewFields Ag™ or dealer for home & garden use and for pets & other animals.
- For Animals- fixed spray system tanks 16 oz BIGSHOT Maxim concentrate per 55-gallon drum.

Municipality/Commercial/Residential Mosquito crepuscular knockdown.

Concentration dilution recommendations for mosquito control: knockdown crepuscular activity. This application is using directly from the container with no dilution for special apparatus application.

- Contact dealer for recommended applications.
- For Control of mosquitoes, ticks, spiders dilute ¾ ounce per gallon and spray. Fixed mosquito spray system tanks dilute 16 oz BIGSHOT Maxim concentrate per 55-gallon drum.

Commercial/Residential application: backpack fog/misters/hand sprayer recommended dilutions:

- Spray interval 25-45 days; Rate dilution = ¾ ounce per gallon water

Stationary Misters

- (Rate = 16 oz per 55 gallons).

