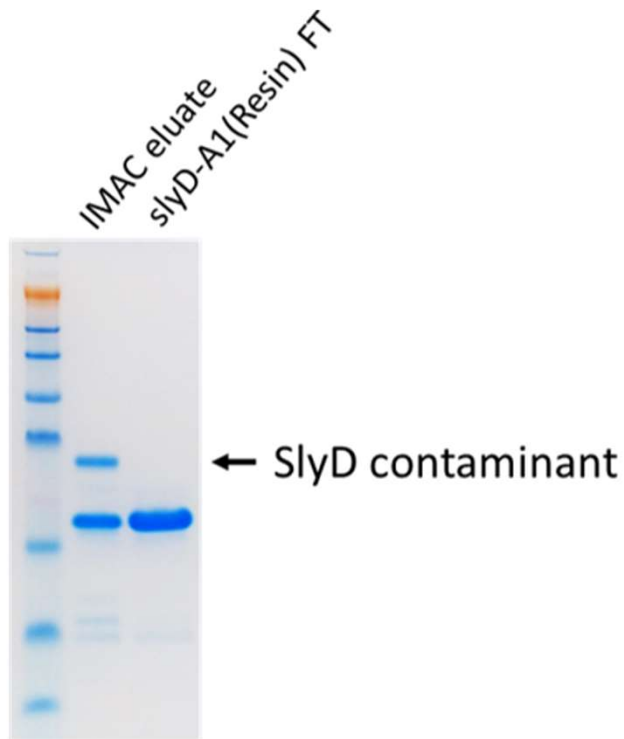


# Removal of contaminating SlyD from IMAC eluate

---



## Methods

Protein containing SlyD contaminant was eluted from Ni-NTA SF resin in Qiagen elution buffer containing 250 mM imidazole (IMAC eluate). Approximately 0.26 mg of protein was applied to 37  $\mu$ l packed SlyD-A1(Resin) and incubated for 1 h, 4°C, rotating, and the flow through (SlyD-A1(Resin) FT) collected and analyzed on 12% SDS-PAGE in reducing sample buffer.