

BROKEN RIVER *Quilts*

HALF SQUARE TRIANGLE CHEAT SHEET

Half Square Triangles or HST are squares made up of two right angle triangles, each triangle taking up half the square.

HST are commonly used in quilt patterns and can be used to make some interesting designs.

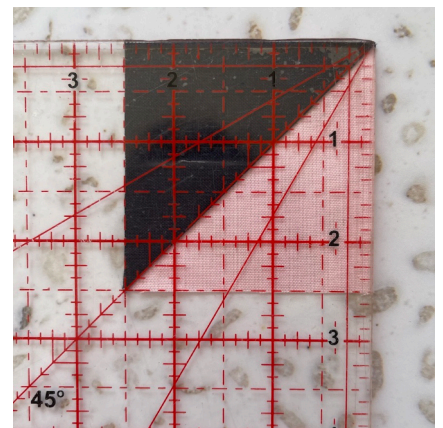
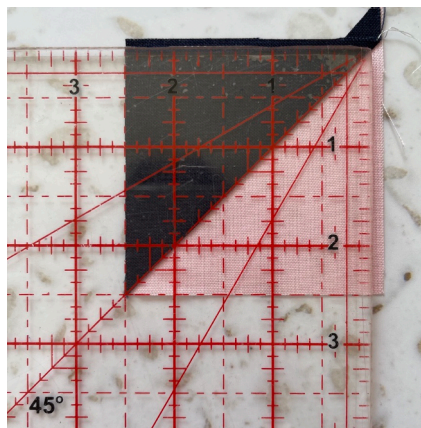
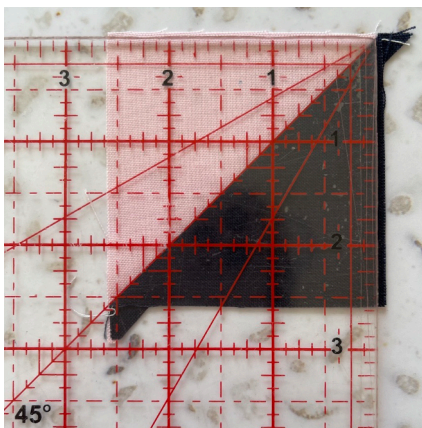
There are a number of methods that can be used to make HST. This cheat sheet covers making 2, 4 or 8 at a time.

Which method should you use" Consider . . .

- How many HST needed for your project e.g. If you only need a couple, then the 2 at a time method may be best. If you need a lot, then 8 at a time might make more sense.
- Whether you are comfortable working with bias edges. The 4 at a time method creates edges that are along the bias. As a result, HST made with this method can be more prone to stretch.

When making HST:

- Be as accurate as you can with your cutting and piecing.
- When cutting fabric to make HST, round any measurements up to the nearest $\frac{1}{4}$ " e.g. round $1\frac{7}{8}$ " up to 2". It is better to make slightly oversized units and trim them to size.
- Use a scant $\frac{1}{4}$ " seam when sewing.
- Trim the HST to the size needed. Use the 45° line on your quilting ruler by placing it long the sewn diagonal of the HST before trimming (See images below).



Steps to Trim HST:

Step 1: Place the quilting ruler onto the HST, aligning the 45° line on the ruler with the seam.

Step 2: Check that there is enough fabric to trim the HST down to the unfinished HST size. In the images above we are trimming to an unfinished size of $2\frac{1}{2}$ " x $2\frac{1}{2}$ ". Trim the two edges.

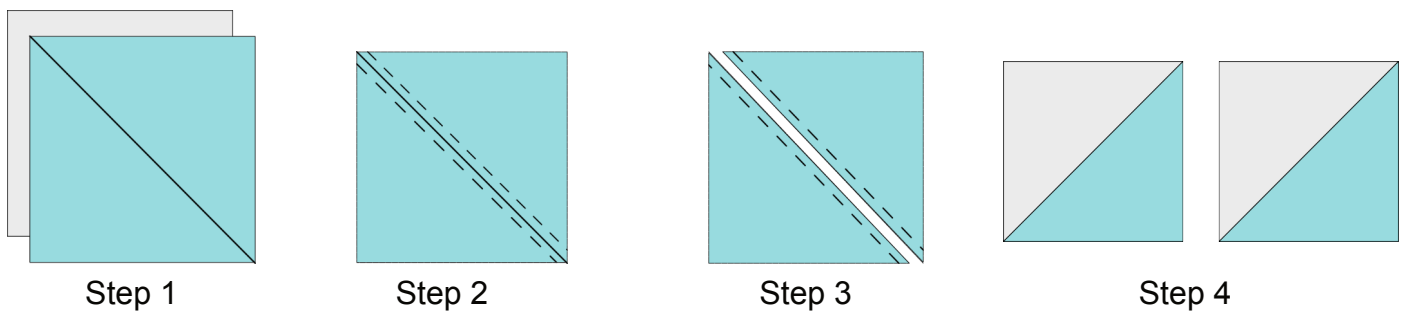
Step 3: Turn the HST and again, align the 45° line on the ruler with the seam. Check that the previously trimmed edges align to the unfinished HST size needed e.g. $2\frac{1}{2}$ " x $2\frac{1}{2}$ " marks on the ruler.

Step 4: Again trim the remaining two sides of the HST.

HST - 2 AT A TIME METHOD:

HST Finished Size (Once sewn into a Quilt)	HST Unfinished Size (Including Seam Allowances)	Size to Cut Squares to Make HST With
1" x 1"	1 ½" x 1 ½"	2" x 2"
2" x 2"	2 ½" x 2 ½"	3" x 3"
3" x 3"	3 ½" x 3 ½"	4" x 4"
4" x 4"	4 ½" x 4 ½"	5" x 5"
5" x 5"	5 ½" x 5 ½"	6" x 6"
6" x 6"	6 ½" x 6 ½"	7" x 7"
7" x 7"	7 ½" x 7 ½"	8" x 8"
8" x 8"	8 ½" x 8 ½"	9" x 9"
9" x 9"	9 ½" x 9 ½"	10" x 10"
10" x 10"	10 ½" x 10 ½"	11" x 11"

Calculation = Add 1" to the **finished** size of the HST needed.



Step 1: Place two squares of fabric right sides together. Draw a diagonal line across the top square.

Step 2: Sew a scant quarter inch seam to either side of the drawn line.

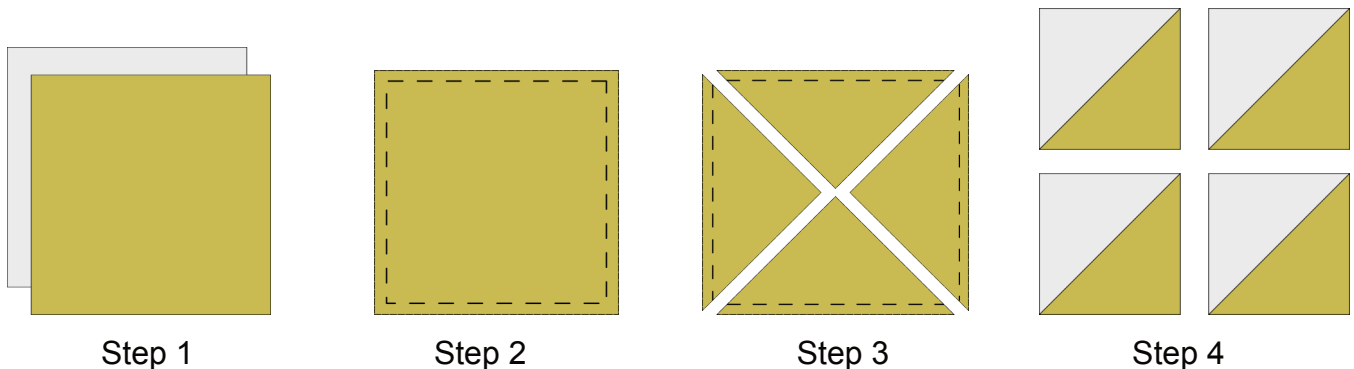
Step 3: Cut along the drawn diagonal line to separate the two halves.

Step 4: Open the two HST out and press the seams. Trim the HST to the size required (unfinished size).

HST - 4 AT A TIME METHOD:

HST Finished Size (Once sewn into a Quilt)	HST Unfinished Size (Including Seam Allowances)	Size to Cut Squares to Make HST With
1" x 1"	1 ½" x 1 ½"	2 ½" x 2 ½"
2" x 2"	2 ½" x 2 ½"	4" x 4"
3" x 3"	3 ½" x 3 ½"	5 ½" x 5 ½"
4" x 4"	4 ½" x 4 ½"	7 ¼" x 7 ¼"
5" x 5"	5 ½" x 5 ½"	8 ¾" x 8 ¾"
6" x 6"	6 ½" x 6 ½"	10 ¼" x 10 ¼"
7" x 7"	7 ½" x 7 ½"	11 ½" x 11 ½"
8" x 8"	8 ½" x 8 ½"	13 ½" x 13 ½"
9" x 9"	9 ½" x 9 ½"	15" x 15"
10" x 10"	10 ½" x 10 ½"	16 ½" x 16 ½"

Calculation = Divide the **unfinished** size of the HST by 0.64 and round up to nearest 1/4".



Step 1: Place two squares of fabric right sides together.

Step 2: Sew a scant quarter inch seam around all 4 edges.

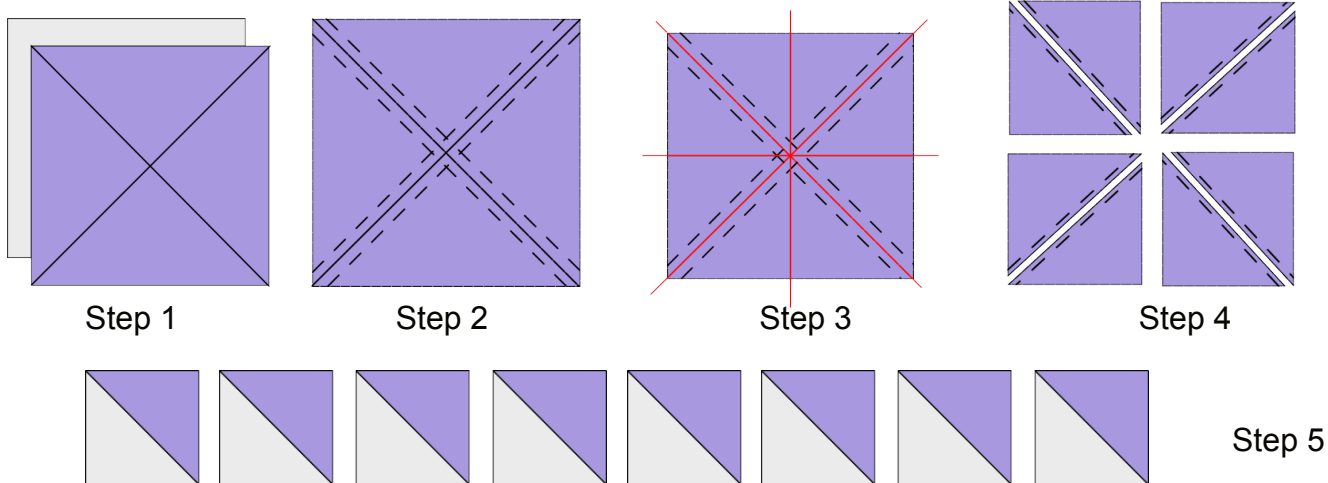
Step 3: Cut from corner to corner along both diagonals.

Step 4: Open the four HST out and press the seams. Trim the HST to the size required (unfinished size).

HST - 8 AT A TIME METHOD:

HST Finished Size (Once sewn into a Quilt)	HST Unfinished Size (Including Seam Allowances)	Size to Cut Squares to Make HST With
1" x 1"	1 ½" x 1 ½"	4" x 4"
2" x 2"	2 ½" x 2 ½"	6" x 6"
3" x 3"	3 ½" x 3 ½"	8" x 8"
4" x 4"	4 ½" x 4 ½"	10" x 10"
5" x 5"	5 ½" x 5 ½"	12" x 12"
6" x 6"	6 ½" x 6 ½"	14" x 14"
7" x 7"	7 ½" x 7 ½"	16" x 16"
8" x 8"	8 ½" x 8 ½"	18" x 18"
9" x 9"	9 ½" x 9 ½"	20" x 20"
10" x 10"	10 ½" x 10 ½"	22" x 22"

Calculation = Add 1" to the **finished** size of the HST and then double.



Step 1: Place two squares of fabric right sides together. Draw both diagonal lines across the top square.

Step 2: Sew a scant quarter inch seam to either side of both drawn diagonals.

Step 3: First cut along both drawn diagonal lines. Next cut in half horizontally then cut in half vertically.

Step 4: Open the eight HST out and press the seams.

Step 5: Trim the HST to the size required (unfinished size).