

# Digital Circuit Breaker Finder

## NF-827&NF-827S



Dear user, thank you for purchasing this product. Read the instructions carefully before use.

## Product introduction

NF-827 is a socket line sequence detection and Digital Circuit Breaker Finder; This instrument is suitable for home, factory and all kinds of large construction sites, it is composed of socket tester and receiver.

The receiver has high sensitivity and strong anti-interference ability, which is used to find the corresponding air opening of the power socket or fixed panel in the circuit.

Also support socket test, plug the socket tester into the power socket, you can test the socket wiring.

## Product functions

### 1.Socket test

Insert the socket tester into the socket. (Fig 1.1)

Judge the test result according to the test light on/off. (Fig 1.2)



Fig 1.1  
(Sockets need to be powered)

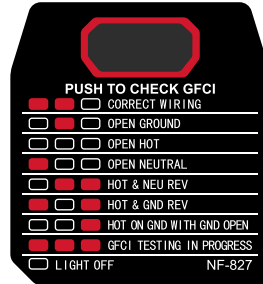


Fig 1.2  
(Test results)

**Note:** When geodesic, please short press the " " key, " " appears, indicating the lack of ground. Other functional tests show results directly.

## 2.Air switch detection

Insert the socket tester into the socket. (Fig 2.1)

Long press the " " key of the receiver for 1 second to turn on the machine, and the probe lights up orange, indicating that the air switch is in line finding mode.

Open the distribution box cover, use the receiver probe close to the air switch panel, and detect one by one. When the probe is close to the target air switch, the instrument will emit "beep" sound, and the probe will light up purple light. The closer the probe is to the target air switch, the faster the "beep" sound of the instrument will be, and the purple light of the probe will be brighter, so as to find the target air switch. (Fig 2.2) Long press " " key again for 2 seconds to power off.



Fig 2.1  
(Socket needs to be energized)

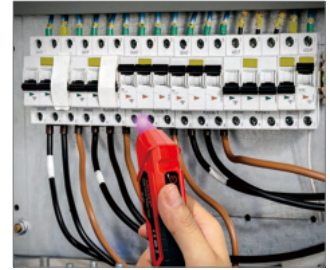


Fig 2.2  
(The air switch with the strongest signal is the target air switch)

## 3.NCV electronic pen

Press the " " button when the receiver is turned on. The probe indicator is switched to green, indicating NCV mode is turned on. (Fig.3)

When the probe is near an outlet or a live wire, the instrument will emit a "drip" sound, indicating that there is power.

Press "↺" button again, the probe will change back to the orange light, indicating that the current air switch line finding mode is back.

Long press "🔌" key for 2 seconds and the indicator light of the probe goes off.



Fig.3

#### 4. Lighting function

When the receiver is turned on, press the "🔌" key and the lighting light will turn on; Press the "↺" button again, and the light goes out. (Fig.4)



Fig.4

#### 5. Low power prompt

When the battery power of the receiver is too low, the probe indicator light flashes, please replace the battery in time.

If the power is lower than 6.8V, the receiver will automatically shut down.

#### Product parameters

Product Model	NF-827&NF-827S
Air switch detection range	0~3cm
Test voltage of socket line sequence	CAT II 90~120V 50/60Hz 5W
NCV electric pen	AC90V~1000V 50/60Hz
Power supply mode	GP 1604G 9V
Low current indication	If the battery is lower than 7.3V, the probe indicator will flash
Low power shutdown	If the battery is lower than 6.8V, the instrument will automatically shut down
Maximum operating current	≤ 50 mA
Standby current	≤ 30 mA
LED lighting	√
Operating ambient temperature	-20°C~50°C
Receiver dimensions	49 X 34 X 202mm
Socket tester dimensions	56 X 32 X 99mm

#### Packing list

Receiver	1 Set	Color box	1 PCS
Socket tester	1 Set	Instruction manual	1 PCS
Tool kit	1 PCS	Certificate/warranty card	1 PCS

**Note:** The manual is for reference only, if there is any change, without prior notice, the product is subject to the physical object.

设计	品名	样式	印刷要求
CZG	NF-827&NF-827S说明书折页英文-V3 20231108	3折页	彩色
日期	品号	页码	
2023.11.08			
样品	尺寸	材质	
	315×145mm	128g铜版纸	
变更记录	V2较V1版本, 新增了型号827S		
	V3较V2版本, 修改了产品参数		