



Telephoto Infrared Camera

NF-588E



WARNING

- ✦ Please do not disassemble the device casually. If there is any need for repair or maintenance, please let a professional handle it.
- ✦ Do not use alcohol, detergent and other organic cleaners to clean the lens. It is recommended to use soft items to wipe with water.
- ✦ Please do not let sunlight, laser and other strong light sources directly shine on the lens, otherwise it will cause irreparable physical damage to the device.
- ✦ When the APP is running, you need to enable the OTG permission in the settings of the mobile phone.

1.Product Introduction

NF-588E adopts high-resolution industrial grade infrared detector. With a 10mm lens, it is a high-precision and fast-response portable outdoor thermal imaging night vision device for mobile phones.

The product is portable and lightweight, plug and play. With a professional APP, it can be connected to the mobile phone to perform infrared imaging of the target object. At the same time, it has different image modes and other functions to meet the observation needs of different scenes.



2.Product Features

- High-quality optical lens with high-resolution detector, the imaging effect is excellent.
- Lightweight and portable, it can be used with mobile APP and is suitable for observation in different scenes.
- Accurate GPS positioning information.
- It has the function of compass to judge the direction.
- Hot spot tracking and low temperature tracking functions.
- Aluminum alloy shell, strong and durable.

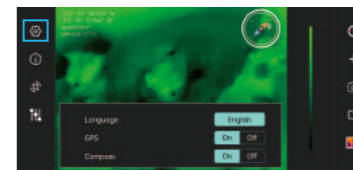
3.Interface Introduction



| | | |
|---|----------------------|--|
| 1 | Set up | Provide the interface of the App and the parameter settings of the infrared thermal camera |
| 2 | About | Some information about the App |
| 3 | Image rotation | Can rotate the image 180 degrees |
| 4 | Image parameters | The display of infrared images can be adjusted |
| 5 | Color Palettes | You can switch between different color palettes to change the display color of the video |
| 6 | Temperature tracking | Can track the highest and lowest temperature on the screen |
| 7 | Photograph | Take a photo and store |
| 8 | Video | Record a video and store |
| 9 | Photo album | Store photos and videos |

4.Function Introduction

4. 1 Set Up



| | |
|------------------|--|
| Language | Chinese & English |
| Compass function | Provides information about the direction the screen is pointing at, displayed at the top right of the screen |
| GPS location | Provides longitude and latitude, speed and altitude information. Displayed on the upper left of the screen |

4.2 Color Palettes



| | | |
|-----------|--|---|
| Iron red | | In the high temperature area, the proportion of red is larger, one of the most commonly used display modes |
| White hot | | The high temperature section is white, and the whole picture is mainly black and white |
| Black hot | | The high temperature section adopts black, and the whole screen is mainly white and black |
| Rainbow | | The highest temperature is represented by red, the medium temperature is represented by yellow, and the low temperature is mainly represented by blue and black |
| Red hot | | The main color is red and black, from the lowest temperature to the highest temperature, using black, white and red transitions, suitable for scenes that focus on high-temperature objects |
| Cool blue | | With a green tint, it is a more traditional night vision color mode |

4.3 Temperature Tracking

Click the temperature tracking button on the right, and you can choose to turn on or off the highest temperature and the lowest temperature in the real-time screen.

Red is the highest temperature and blue is the lowest temperature.

Click to turn on temperature tracking, click again to turn off.



4.4 Photograph

Click the Photograph button, the device will take pictures and save them automatically.

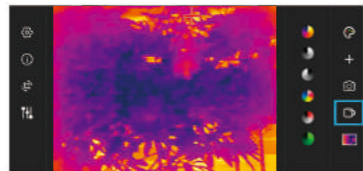


4.5 Video

Click the Video button to record video.

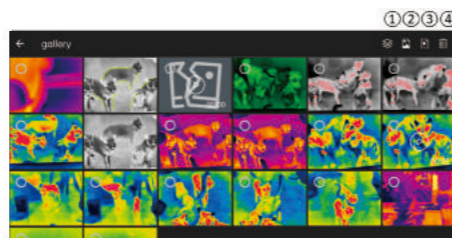
The button turns red to indicate that recording is in progress, and the recording time will be displayed in the lower left corner of the screen.

Clicking the Video button again will stop recording.



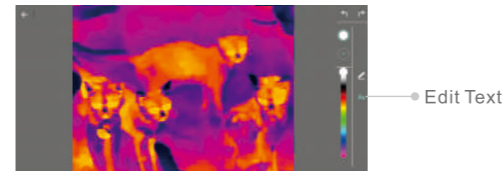
4.6 Photo Album

All photos and videos taken can be viewed by clicking Photo Album.



| | | | |
|---|---------|---|-------------|
| ① | Gallery | ② | Photo |
| ③ | Video | ④ | Recycle bin |

When clicking a picture to view details, you can edit the picture by clicking the tool icon on the right side of the screen.



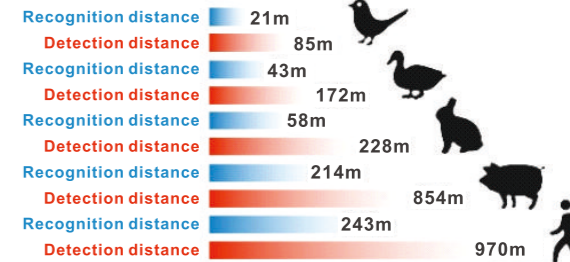
5. Technical Details

| | |
|------------------------------|--|
| Infrared Resolution | 256*192 |
| Wavelength coverage | 8~14um |
| Frame rate of thermal images | 25Hz |
| NETD | <50mK @25°C |
| FOV | 17.5°x13.2° |
| Focal length | 10mm |
| Focusing method | Fixed focus |
| Digital zoom | 1X~4X(Adjust with screen gestures) |
| Temperature Tracking | Yes |
| Color palettes | Iron red,Rainbow,White hot,Black hot, Cool blue,Red hot |
| GPS location | Provides longitude and latitude,speed and altitude information |
| Compass function | Yes |
| Screen rotation | Yes |
| Photograph | Yes |
| Video | Yes |
| Language | Chinese & English |
| Working temperature | -20°C ~ 60°C |
| Storage temperature | -40°C ~ 85°C |
| IP level | IP 54 |
| Product size | Dimensions: 30x30x19mm Lens: 20x10.5mm |

6. Packing List

| | |
|----------------|-----|
| Toolkit | 1pc |
| Thermal Imager | 1pc |
| Bracket | 1pc |
| Data line | 1pc |
| Manual | 1pc |
| Color box | 1pc |
| Certificate | 1pc |

7. Other



Note: The above test data is only limited to the plain environment for reference. We will not notify you if the test data is updated.

| | | | |
|------------|----------------------------|---------|------|
| 设计 | 品名 | 样式 | 印刷要求 |
| CZG | NF-588E说明书折页英文-V1 20230808 | 4折页 | 彩色 |
| 日期 | 品号 | 页码 | |
| 2023.08.08 | | | |
| 样品 | 尺寸 | 材质 | |
| | 420×145mm | 128g铜版纸 | |
| 变更记录 | | | |
| | | | |
| | | | |