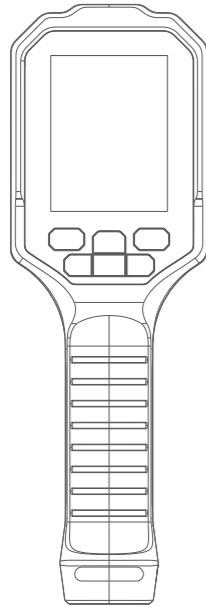


Thermal Imager

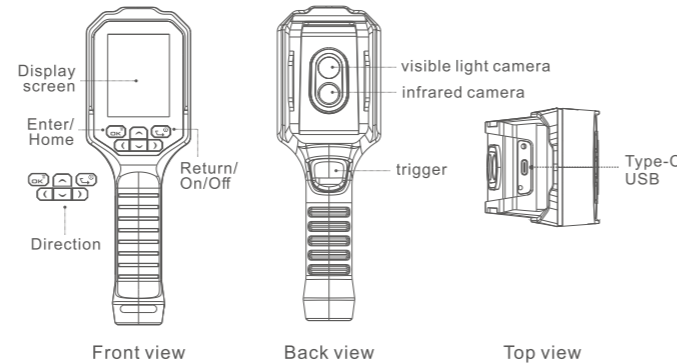
NF-525



Overview

The NF-525 infrared thermal imager can measure the pixel temperature of the target object and capture its state by means of the infrared thermal imaging and visible light.

Keys and Functional Description



- ① Charging indication: USB Type-C interface is used for charging. During charging, the display screen is normally on and display the current power volume.
- ② On/Off: Short press “” to power on or long press “” to power off.
- ③ Photographing and video recording: Short press “Trigger” in power-on state to photograph, or long press “Trigger” to record videos.
- ④ Data transmission: When connecting with a computer through the USB Type-C wire, the thermal imager can generate the USB drive and copy photos/videos through the Windows system.

Functional Description

1. On/Off

Short press “” in power-off state to power on or long press “” in power-on state to power off.

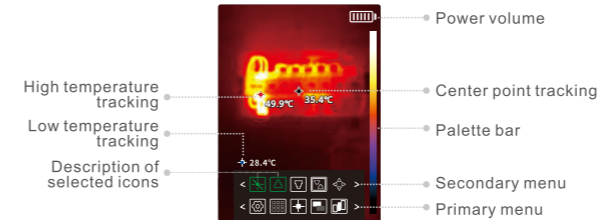
2. Main interface

Press “” and “” on this interface to switch the palette, or press “” and “” to switch the function of visible light imaging or infrared imaging.

Short press “Trigger” to photograph or long press “Trigger” to record videos.

Press “” on this interface to light off the screen and save power or press any keys to light on the screen again and enter the interface.

Press “” to display the following menu interface:

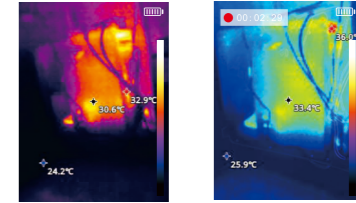


After the primary menu pops up, select a function with “” and “”, press “” to pop up the secondary menu. Press “” to return to the main interface.

After entering the secondary menu, select a function with “” and “”, press “” to confirm the selected function, and press “” to return to the primary menu. Both photographing and video recording are valid on this interface.

3. Photographing and video recording

Short press “Trigger” to photograph (image format: jpg).
Long press “Trigger” to record videos (video format: mp4).



Photographing

Video recording

4. Album

Press “” on the main interface to pop up the primary menu, select the album “” with “” and “”, press “” to enter the album.

All the pictures and videos in the album are arranged in the shooting time. Select the pictures or videos with “” and “”, press “” for full-screen display or play.

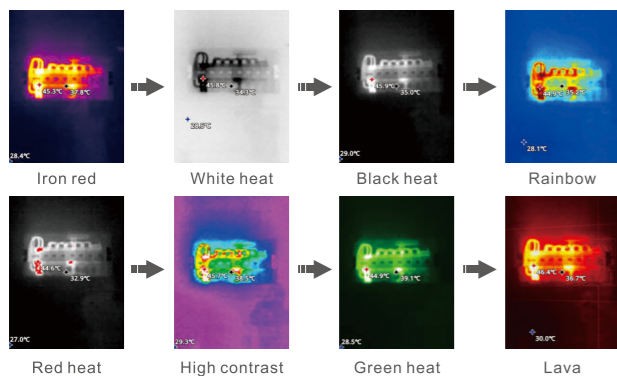
Press “” and “” in the display or play state to switch the previous or next file. After play or pressing “”, return to the album list interface.

5. System settings

Option	Description of system settings
Language switch	Chinese (Simplified), Chinese (Traditional), English, French, German, Spanish, Russian, Dutch, Japanese, Korean and Arabian
Emissivity	0.01-0.99
Unit switch	Degree centigrade, Fahrenheit and Kelvin
Temperature alarm (On/Off) setting	Select the upper/lower limit alarm or set the alarm value
Storage settings	View the internal storage situation and formatting
Date and time	Time setting: Year/month/day/hour
Auto OFF	Set the auto OFF time if there is no operation for a long time
Palette bar display switch	Whether the screen palette bar is displayed
Screen brightness	Screen brightness (adjustable)
Factory reset	Whether to reset the factory data (optional)

6. Palette

To optimize different scenarios and facilitate observing different target objects, the thermal imager comprises 8 common palettes.



7. Setting of image display modes

Image display mode	
Single infrared imaging	Only observing the infrared thermal imaging
Visible light imaging	Measure the temperature with ordinary visible light camera
Picture in picture	Especially measuring the temperature in the center part
Edge blending	Observe the infrared image distribution, measure the temperature or display the detailed visible light
Overlay blending	Overlay some colors of the visible light on the infrared thermal imaging and make the background clearer
Blending adjustment	Adjust the blending proportion when the visible light and infrared imaging are blended into a picture
Blending deviation adjustment	Adjust the relative position when the visible light and infrared imaging are blended into a picture

7.1 Icon description of image display mode

- ① Infrared ② Visible light ③ Edge blending
 ④ Overlay blending ⑤ Picture in picture
 Blending adjustment Blending deviation adjustment

7.2 Choose the image mode according to the needs



- ① Open the image mode icon
 ② Choose the image mode according to the needs

7.3 The display effect of image mode is shown as below



8. Temperature measurement mode

① Conventional temperature measurement

Support temperature measurement at the center point as well as continuous high/low temperature tracking

② Regional temperature measurement

Choose some regions for center point and high/low temperature tracking and test, or zoom in/out the temperature measurement region for different scenarios.

Packing list

Handheld Thermal Imager	1 set	Manual	1 copy
Qualification certificate/warranty card	1 copy	Color box	1 pcs
Instructions card of lithium battery	1 copy	USB Type-C data line	1 pcs

Remarks: The package accessories shall be subject to the received material object.

Technical parameters of product

Technical parameter description of NF-525		
Handheld thermal imaging	Resolution	120°90
	Working band	8-14um
	Frame rate	25Hz
	NETD	<60mK@25°C
	Field angle	H=38° V=50°
	Emissivity	0.01~0.99
	Temperature measurement range	Low temperature: -10 to 160°C High temperature: 160-400°C
	Temperature measurement accuracy	±2°C or ±2% of the reading
	Screen size	2.8 inches
	Image mode	Edge blending, overlay blending, picture in picture, single infrared and single visible light
Palette	Iron red, white heat, black heat, rainbow, red heat, high contrast, green heat and lava	
Temperature measurement	Support full-screen temperature measurement of highest/lowest/center point and mild region	
Visible light	Visible light camera	100 million pixels
	Field angle of visible light	H=55° V=83°
	Resolution	720 P
General	Language	Chinese (Simplified), Chinese (Traditional), English, French, German, Spanish, Russian, Dutch, Japanese, Korean and Arabian
	Interface	USB Type-C (support charging and data transmission)
	Battery	2600mAh lithium battery
	Capacity	8G internal memory
	Picture storage format	JPG
	Video format	MP4
	Working time	4 hours if the battery is fully charged
	Working temperature	-10~50°C
	Storage uretemperat	-40~85°C
	Net weight	300g
Product dimension	219 x 72 x 66mm	



深圳市诺方舟电子有限公司

编号	201	202	301	302	303	304	305	比例:	1:1	品号:	304-K5001-0002
类目	塑胶件	五金类	镜片	PVC贴纸	不干胶贴	说明书	包装盒	单位:	mm		
选择						√		设计	CZG	品名:	NF-525说明书折页英文-V1 20240329
306	307	308	309	310	311	312	313	核准			
彩卡	吸塑	工具包	PE袋	纸箱	宣传单	合格证	打印标签	标准:	√	文件类型:	做货文件
								定制:			
制作日期	2024.03.29			样式	4折页		印刷材质	128g双铜纸			
印刷要求	彩色			页码			变更记录				
尺寸大小	420*140mm			版本	V1						