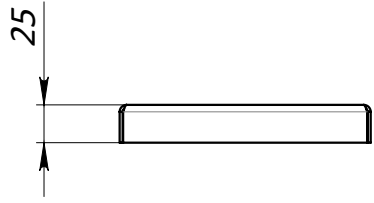


4 3 2 1

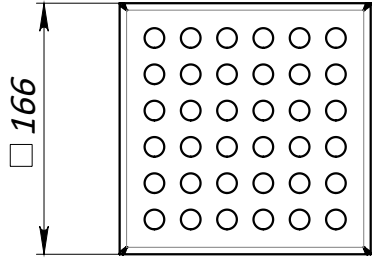
F

F



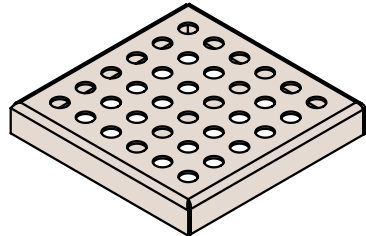
E

E



D

D



C

C

1. *Dimensions for reference*
2. *Delivery and packaging are carried out in accordance with the terms of the contract*
3. *The manufacturer reserves the right, without notice to the consumer, to make changes to the design of the products for improvement of their technological and operational parameters, which will not affect the quality and properties of the product.*

B

B

UNLESS OTHERWISE SPECIFIED: DIMENSIONS ARE IN MILLIMETERS SURFACE FINISH: TOLERANCES: ISO 2768-m LINEAR: ANGULAR:	FINISH: Passivation	DEBURR AND BREAK SHARP EDGES	DO NOT SCALE DRAWING	REVISION

A

A

NAME	SIGNATURE	DATE	TITLE:
DRAWN Karetin		31.08.22	Stainless Steel Drain Point Grate 166x166 Perforated L15
CHK'D Halushka			
APPV'D			Load class L15
MFG			ARTICLE:
Q.A			993010
		MATERIAL: Stainless Steel (AISI 304)	A4
		WEIGHT: 0.68 kg	SCALE:1:5
			SHEET 1 OF 1

4 3 2 1