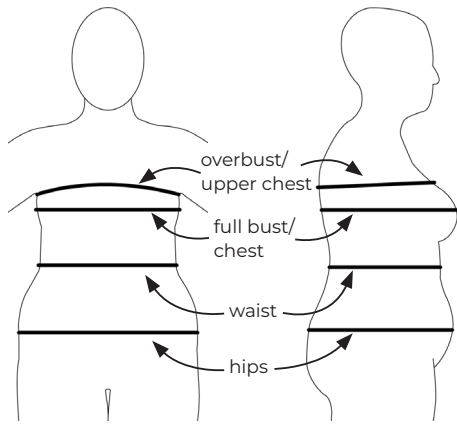


# SIZE CHARTS



The lowercase size range is drafted for a B cup and the uppercase size range is drafted for a D cup.

Both size ranges are drafted for a height of 5"5'.

The upper chest measurement is the most important one to go with when choosing a size for this pattern, as it's very loose fitting around the chest, waist and hips.

If your chest measurement fits into a different size to your upper chest measurement, consider choosing the upper chest size, but lengthening the front hem. This will ensure the hem won't ride up at the front.

## MEASUREMENT CHART - CM

	a	b	c	d	e	f	g	h	i	j	k
	UK 2 US 00	UK 4 US 0	UK 6 US 2	UK 8 US 4	UK 10 US 6	UK 12 US 8	UK 14 US 10	UK 16 US 12	UK 18 US 14	UK 20 US 16	UK 22 US 18
UPPER CHEST	73.5	76	78.5	81	86	91	95	99	103.5	108	112.5
CHEST	74.5	77	79.5	82	87	92	97	102	108	114	120
WAIST	56.5	59	61.5	64	69	74	79	84	90	96	102
HIP	81.5	84	86.5	89	94	99	104	109	115	121	127

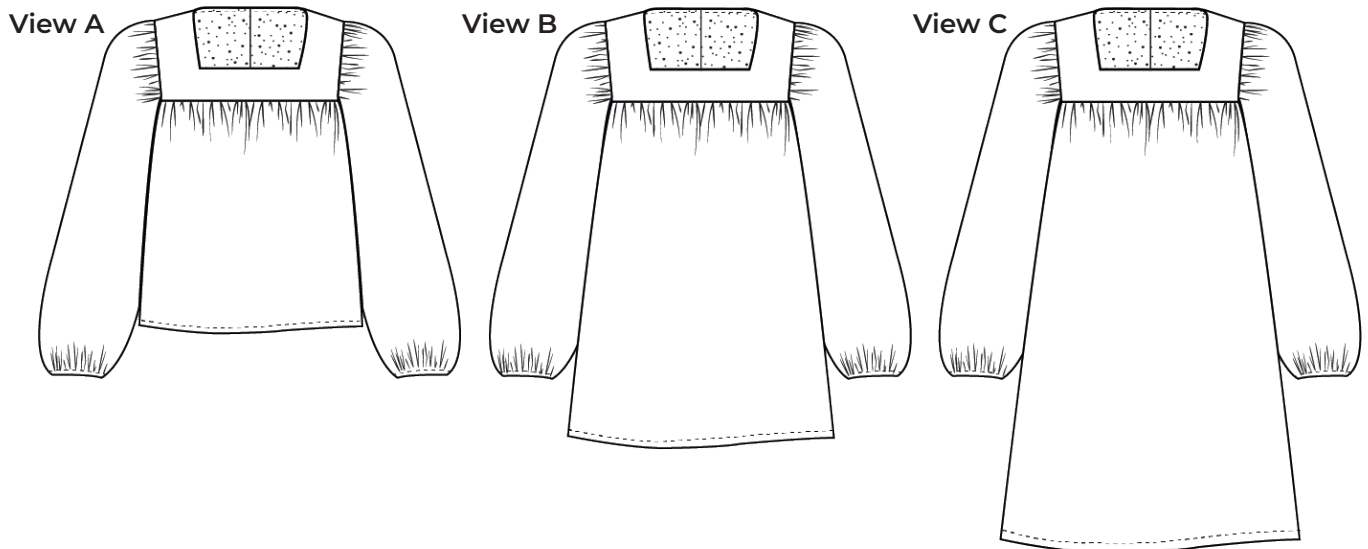
	F	G	H	I	J	K	L	M	N	O	P	Q
	UK 12 US 8	UK 14 US 10	UK 16 US 12	UK 18 US 14	UK 20 US 16	UK 22 US 18	UK 24 US 20	UK 26 US 22	UK 28 US 24	UK 30 US 26	UK 32 US 28	UK 34 US 30
UPPER CHEST	91	95	99	103.5	108	112.5	117	121.5	126	130.5	135	139.5
CHEST	97.5	102.5	107.5	113.5	119.5	125.5	131.5	137.5	143.5	149.5	155.5	161.5
WAIST	74	79	84	90	96	102	108	114	120	126	132	138
HIP	99	104	109	115	121	127	133	139	145	151	157	163

## MEASUREMENT CHART - INCHES

	a	b	c	d	e	f	g	h	i	j	k
	UK 2 US 00	UK 4 US 0	UK 6 US 2	UK 8 US 4	UK 10 US 6	UK 12 US 8	UK 14 US 10	UK 16 US 12	UK 18 US 14	UK 20 US 16	UK 22 US 18
UPPER CHEST	29	30	31	32	33.75	35.75	37.50	39	40.75	42.50	44.25
CHEST	29.25	30.25	31.25	32.25	34.25	36.25	38.25	40.25	42.50	45	47.25
WAIST	22.25	23.25	24.25	25.25	27.25	29.25	31	33	35.50	37.75	40.25
HIP	32	33	34	35	37	39	41	43	45.25	47.75	50

	F	G	H	I	J	K	L	M	N	O	P	Q
	UK 12 US 8	UK 14 US 10	UK 16 US 12	UK 18 US 14	UK 20 US 16	UK 22 US 18	UK 24 US 20	UK 26 US 22	UK 28 US 24	UK 30 US 26	UK 32 US 28	UK 34 US 30
UPPER CHEST	35.75	37.50	39	40.75	42.50	44.25	46	47.75	49.50	51.50	53.25	55
CHEST	38.5	40.25	42.25	44.75	47	49.50	51.75	54	56.5	58.75	61	63.5
WAIST	29.25	31	33	35.50	37.75	40.25	42.50	45	47.25	49.50	52	54.25
HIP	39	41	43	45.25	47.75	50	52.25	54.75	57	59.50	61.75	64.25

# PATTERN INFORMATION AND FABRIC REQUIREMENTS



The Julie blouse and dress is a loose fitting garment with a front and back yoke which the body and sleeves are gathered to fit, with elasticated cuffs at the sleeve and a button or ribbon fastening the yoke at the back.

View A is cropped to sit at your high hip, view B is 4" longer and view C is a dress length.

## NOTIONS REQUIRED

- 1m/1 yard elastic 0.5cm/1/4" wide
- thread
- 0.5m/0.5 yards 110cm wide fusible interfacing
- 1 button/ 50cm/ 1/2 yard ribbon (to fasten yoke)

## RECOMMENDED FABRICS

Lightweight, floaty fabrics such as cotton lawn, viscose challis and lightweight silks.

## FABRIC REQUIREMENTS - METRIC (METERS)

		a	b	c	d	e	f	g	k	i	j	k
<b>View A</b>	150cm wide	1.5	1.5	1.6	1.6	1.6	1.6	1.9	1.9	2	2	2.1
	140cm wide	1.5	1.5	1.6	1.8	1.8	1.9	1.9	1.9	2	2.3	2.4
	110cm wide	2.2	2.2	2.3	2.3	2.3	2.3	2.6	2.6	2.7	2.7	2.9
<b>View B</b>	150cm wide	1.7	1.7	1.8	1.8	1.8	1.8	2.1	2.1	2.2	2.2	2.3
	140cm wide	1.7	1.7	1.8	2	2	2.1	2.1	2.1	2.3	2.5	2.6
	110cm wide	2.3	2.4	2.5	2.5	2.5	2.5	2.8	2.8	2.9	2.9	3
<b>View C</b>	150cm wide	2.2	2.2	2.2	2.2	2.2	2.3	2.6	2.6	2.6	2.6	2.7
	140cm wide	2.2	2.2	2.2	2.4	2.5	2.5	2.6	2.6	2.7	2.9	3
	110cm wide	2.9	2.9	2.9	2.9	2.9	2.9	3.3	3.3	3.3	3.4	

		F	G	H	I	J	K	L	M	N	O	P	Q
<b>View A</b>	150cm wide	1.6	1.9	1.9	2	2	2.1	2.1	2.4	2.4	2.4	2.5	2.6
	140cm wide	1.9	1.9	1.9	2	2.3	2.4	2.4	2.4	2.5	2.5	2.7	2.7
	110cm wide	2.3	2.6	2.6	2.7	2.7	2.9						
<b>View B</b>	150cm wide	1.8	2.1	2.1	2.2	2.2	2.3	2.3	2.6	2.6	2.6	2.7	2.8
	140cm wide	2.1	2.1	2.1	2.3	2.5	2.6	2.6	2.6	2.7	2.7	2.9	2.9
	110cm wide	2.5	2.8	2.8	2.9	2.9	3						
<b>View C</b>	150cm wide	2.3	2.6	2.6	2.6	2.6	2.7	2.8	3	3	3.1	3.1	3.2
	140cm wide	2.5	2.6	2.6	2.7	2.9	3	3.1	3.1	3.2			
	110cm wide	2.9	3.3	3.3	3.3	3.4							

## FABRIC REQUIREMENTS - IMPERIAL (YARDS)

		a	b	c	d	e	f	g	h	i	j	k
<b>View A</b>	60" wide	1.6	1.6	1.8	1.8	1.8	1.8	2.1	2.1	2.2	2.2	2.3
	54" wide	1.6	1.6	1.8	2.0	2.0	2.1	2.1	2.1	2.2	2.5	2.6
	43" wide	2.4	2.4	2.5	2.5	2.5	2.5	2.8	2.8	3.0	3.0	3.2
<b>View B</b>	60" wide	1.9	1.9	2.0	2.0	2.0	2.0	2.3	2.3	2.4	2.4	2.5
	54" wide	1.9	1.9	2.0	2.2	2.2	2.3	2.3	2.3	2.5	2.7	2.8
	43" wide	2.5	2.6	2.7	2.7	2.7	2.7	3.1	3.1	3.2	3.2	3.3
<b>View C</b>	60" wide	2.4	2.4	2.4	2.4	2.4	2.5	2.8	2.8	2.8	2.8	3.0
	54" wide	2.4	2.4	2.4	2.6	2.7	2.7	2.8	2.8	3.0	3.2	3.3
	43" wide	3.2	3.2	3.2	3.2	3.2	3.2	3.6	3.6	3.6	3.7	

		F	G	H	I	J	K	L	M	N	O	P	Q
<b>View A</b>	60" wide	1.8	2.1	2.1	2.2	2.2	2.3	2.3	2.6	2.6	2.6	2.7	2.8
	54" wide	2.1	2.1	2.1	2.2	2.5	2.6	2.6	2.6	2.7	2.7	3.0	3.0
	43" wide	2.5	2.8	2.8	3.0	3.0	3.2						
<b>View B</b>	60" wide	2.0	2.3	2.3	2.4	2.4	2.5	2.5	2.8	2.8	2.8	3.0	3.1
	54" wide	2.3	2.3	2.3	2.5	2.7	2.8	2.8	2.8	3.0	3.0	3.2	3.2
	43" wide	2.7	3.1	3.1	3.2	3.2	3.3						
<b>View C</b>	60" wide	2.5	2.8	2.8	2.8	2.8	3.0	3.1	3.3	3.3	3.4	3.4	3.5
	54" wide	2.7	2.8	2.8	3.0	3.2	3.3	3.4	3.4	3.5			
	43" wide	3.2	3.6	3.6	3.6	3.7							

## ELASTIC GUIDES

(cut 2 - one per sleeve)

	a	b	c	d	e	f	g	h	i	j	k
<b>cm</b>	23.5	24	24	24.5	24.5	25	25	25.5	25.5	25.5	26
<b>inches</b>	9 ¼	9 ½	9 ½	9 ½	9 ¾	9 ¾	9 ¾	10	10	10	10 ¼

	F	G	H	I	J	K	L	M	N	O	P	Q
<b>cm</b>	26.5	26.5	27	27	27.5	27.5	28	28	28	28.5	28.5	29
<b>inches</b>	10 ½	10 ½	10 ½	10 ¾	10 ¾	10 ¾	11	11	11	11 ¼	11 ¼	11 ½