



CERTIFICATE OF ANALYSIS

PRODUCT NAME: Certified Organic Joy Organics CBD Tincture - Orange
PRODUCT STRENGTH: 1350 mg
FILL LOT NUMBER: NA
TINCTURE BATCH 21075A
BEST BY DATE: 09/16/2022
HEMP EXTRACT LOT [B1021-001](#)

Click on the links to view third-party reports

Physical Attributes

Test	Method	Specification	Results
Color	SOP-100	Golden to Amber	PASS
Odor	SOP-100	Characteristic -coconut and hemp, orange	PASS
Appearance	SOP-100	Golden to Amber oil in brown glass bottle with dropper	PASS
Primary Package Eval.	SOP-132	Container clean and free of filth. Container caps tight and shrink bands intact	PASS
Secondary Package Eval.	SOP-132	Labeling Compliance Checked, Cartons sturdy and clean. Sufficient cushion material exists. Box taped and secure.	PASS

Review of Third-Party Analysis

Panel	Method	Specification	Results*	Pass/Fail
Potency - Total CBD	SOP-111	1350-1687.5 mg CBD LOQ**: 10 PPM† (0.001%)	1428.5 mg	PASS
Potency - D9-THC	SOP-111	None Detected LOQ: 10 PPM (0.001%)	ND	PASS
Compliant Pesticide Panel	SOP-111	WIP-100008 : Product specification for Tinctures, Oregon Action limits apply	ND	PASS
Microbial - Stec E.Coli	SOP-111	Complies with USP 61/62	Below LOQ	PASS
Microbial - Salmonella	SOP-111	Complies with USP 61/62	Below LOQ	PASS
Microbial - Yeast and Mold	SOP-111	Complies with USP 61/62	Below LOQ	PASS
CA Compliant Heavy Metal Panel	SOP-111	Arsenic (As): ≤1.5 PPM Cadmium (Cd): ≤0.5 PPM Mercury (Hg): ≤1.0 PPM Lead (Pb): ≤0.5 PPM	ND	PASS

**Level of Quantitation, † Parts Per Million

Quality Certified

Kei Horikawa

03/26/2021

Kei Horikawa
Quality Control Manager

Date



B1021-001

25013

7USC1639 Certificate of Analysis

This Product Has Been Tested and Complies with 7USC1639o(1)

Stillwater Laboratories

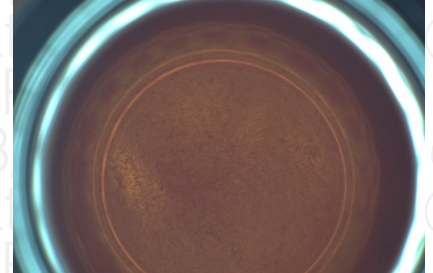
certificate ID OKR48

total cannabinoids per 1460.2mg 30 mL

THC± ND CBD± 1428.5mg

order 8689 received 10/22/2020 12:01:11 PM test tag source ID 25013 sample wgt 15.0 g

7USC1639 Infused



General

DESCRIPTION: Oil sample (15.00g) received in a client-labeled bottle, by commercial courier. Labeled 25013.

Table with columns: Potency, per 30 mL, LOD, LOQ, error (95%CI k=2). Rows include tetrahydrocannabinolic acid (THCa), Δ9-tetrahydrocannabinol (Δ9 THC), Δ8-tetrahydrocannabinol (Δ8 THC), tetrahydrocannabinavarin (THCv), cannabidiolic acid (CBDa), cannabidiol (CBD), cannabidivarin (CBDv), cannabigerolic acid (CBGa), cannabigerol (CBG), cannabinalol (CBN), and cannabichromene (CBC).

± = decarbed NT = not tested NL = no limit, ND = not detected, LOD = detection limit , LOQ = quantitation limit

Table with columns: Microbial, result, limit, Metals, result, limit, Pesticides, result, limit, Pesticides, result, limit. Rows include E coli, Salmonella sp., molds, Ochratoxin A, Aflatoxin, Acetone, Acetonitrile, Benzene, Butane, Chloroform, Cyclohexane, Ethanol, Heptane, Hexane, Isopropyl alcohol, Methanol, Pentane, Propane, Toluene, Xylenes, Arsenic, Cadmium, Lead, Mercury, Abamectin, Acephate, Acequinocyl, Acetamiprid, Aldicarb, Azoxystrobin, Bifenazate, Bifenthrin, Boscalid, Carbaryl, Carbofuran, Chloantraniliprole, Chlorfenapyr, Chlorpyrifos, Clofentezine, Coumaphos, Cyfluthrin, Cypermethrin, Daminozide, Dichlorvos, Diazinon, Dimethoate, Etoxazole, Fenoxycarb, Fenpyroximate, Fipronil, Flonicamid, Fludioxonil, Hexythiazox, Imazalil, Imidacloprid, Malathion, Metalaxyl, Methiocarb, Methomyl, Methyl parathion, Mevinphos, Myclobutanil, Naled, Oxamyl, Paclobutrazol, Permethrin, Phosmet, Piperonylbutoxide, Prallethrin, Propoxur, Propiconazole, Pyrethrin, Pyridaben, Spinetoram, Spinosad, Spiromesifen, Spirotetramat, Spiroxamine, Tebuconazole, Thiocloprid, Thiamethoxam, Trifloxystrobin.

INSTRUMENTS: potency: HPLC (LC2030C-UV) terpenes: GCMS (QP2020/HS20) solvents: GCMS (QP2020/HS20) pesticides: LCMSMS (LC8060) mycotoxins: LCMSMS (LC8060) microbial: qPCR (AriaMx) and plating metals: ICPMS (ICPMS-2030)

SECURITY FEATURE: WATERMARK MUST MATCH CERTIFICATE ID AND ISSUE DATE

Certified by:

Signature of Justin M Johnston

Justin M Johnston Deputy Director

Stillwater Laboratories Inc. MT License L00001, 7, 8 6073 US93N Suite 5 Olney MT 59927 406-881-2019

Printed 10/23/2020 4:04 PM

The data in this report is the property of Stillwater Labs. The format, layout, and security features of this report are copyrighted by Stillwater Laboratories Inc. © 2020



ISO/IEC 17025:2017



Certificate #4961.01

https://portal.a2la.org/scopepdf/4961-01.pdf



ISO/IEC 17025:2017



Certificate #4961.01



Stillwater Laboratories

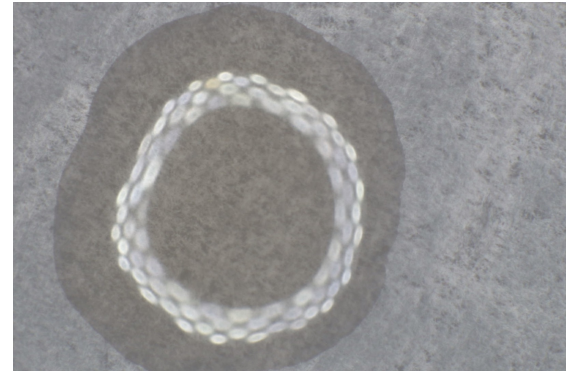
<https://portal.a2la.org/scopepdf/4961-01.pdf>

Lot# 21075A

Sample Handling

test ID **10170.1** sample wt
 type tincture order **10170**
 lab ID **1CT19** sample date 3/22/2021
 unit unit weight

tincture



Methods

	method	equipment
weights	MSP-7.3.1.3	AUX120.1
potency	MSP-7.5.1.5	LC-2030
terpenes	MSP-7.5.1.7	QP2020/HS20
pesticides	MSP-7.5.1.8	LC-8060
mycotoxins	MSP-7.5.1.8	LC-8060
microbial	MSP-7.5.1.1	AriaMx/Hardy
solvents	MSP-7.5.1.6	QP2020/HS20
metals	MSP-7.5.1.1	ICPMS2030

Potency	per	estimated error	Terpenes	%	estimated error	%	estimated error	%	estimated error
---------	-----	-----------------	----------	---	-----------------	---	-----------------	---	-----------------

not tested

terpenes
not tested / not required

Solvents	MT limit	1CT19	LOQ	Pesticides (MT)	MT limit	1CT19	LOQ	Pesticides (other)	1CT19	LOQ
----------	----------	-------	-----	-----------------	----------	-------	-----	--------------------	-------	-----

pesticides
not tested / not required

not tested /
not required

Toxic Metals	MT limit	1CT19	LOQ
--------------	----------	-------	-----

metals
not tested / not required

Microbial	MT limit	1CT19	LOQ
<i>E. coli</i>	10 CFU	0 CFU	<10 CFU/g
Salmonella sp.	10 CFU	0 CFU	<10 CFU/g
molds	10000 CFU	0 CFU	<10k CFU/g

Comments

• All testing was completed onsite at 6073 US93N, Olney MT • Potency (cannabinoid concentration) is calculated from the equation: [cannabinoid] = [cannabinoid]_{HPLC} x volume_{dilution} / m_{dry}. Terpene concentration is calculated from the equation: [terpene] = (terpene mass)_{GCMS} / m_{dry}. ••• Decarboxyted cannabinoid concentration is calculated from the equation XXX_{total} = 0.877 x XXX_a + XXX ••• Standards are used to calibrate the resulting data and estimate error using a standard estimate of error method; this is combined with error from weighing and dilution using the propagation of error formula s_g² = Σ(∂f/∂i)²s_i² where i is the contributor to error. The 95% confidence range is calculated from the equation: (concentration) ± t_{CL90} x s_g. Sampling error is not

Certified by:

Kyle Larson, MSc (Biology)
 Deputy Director
 6073 US93N, Olney MT 59927
 406-881-2019 rdb@stwlabs.com