

C-00-A-000-230-0000-000-P-000

BRACKET TYPE:

C=306-1158 (LH)
D=306-1164 (RH)

PIVOT BODY LENGTH: (00.0mm)

16=304-1200 (bulkhead thickness: 3mm [1/8 in])
25=304-1201 (bulkhead thickness: 10mm [3/8 in])
32=304-1202 (bulkhead thickness: 16mm [5/8 in])
51=304-1203 (bulkhead thickness: 35mm [1 3/8 in])
64=304-1204 (bulkhead thickness: 48mm [1 7/8 in])
76=304-1205 (bulkhead thickness: 60mm [2 3/8 in])

LENGTH OF LINK: (00.0mm)

754=307-1037
785=307-1072
830=307-1002
853=307-1094
859=307-1022
R859=307-1153 (for use with D bracket with C pin position)

MOTOR:

230-1001=12V, DYN, LH
230-1002=12V, COAST, LH
230-1004=24V, DYN, LH
230-1005=24V, COAST, LH
230-2001=12V, DYN, RH
230-2002=24V, DYN, RH
230-2005=12V, COAST, RH
230-2006=24V, COAST, RH

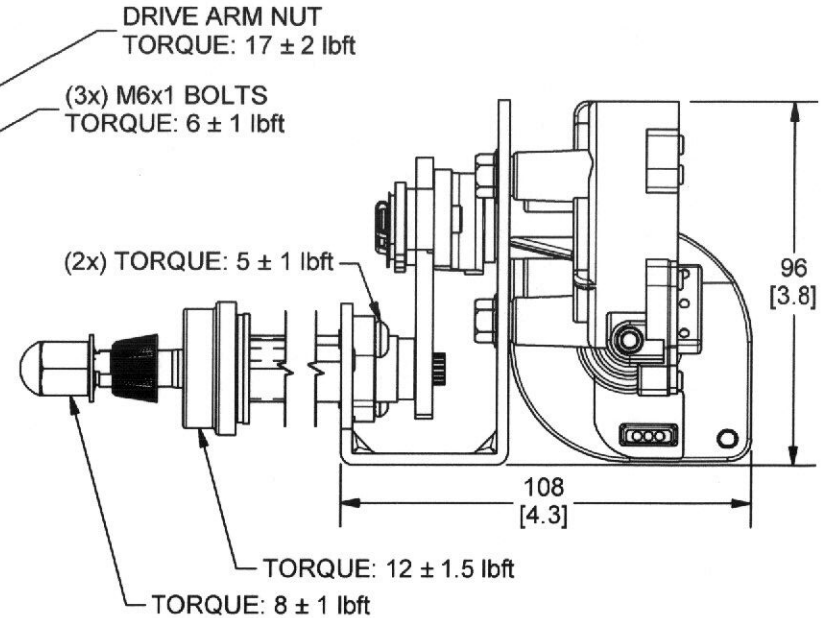
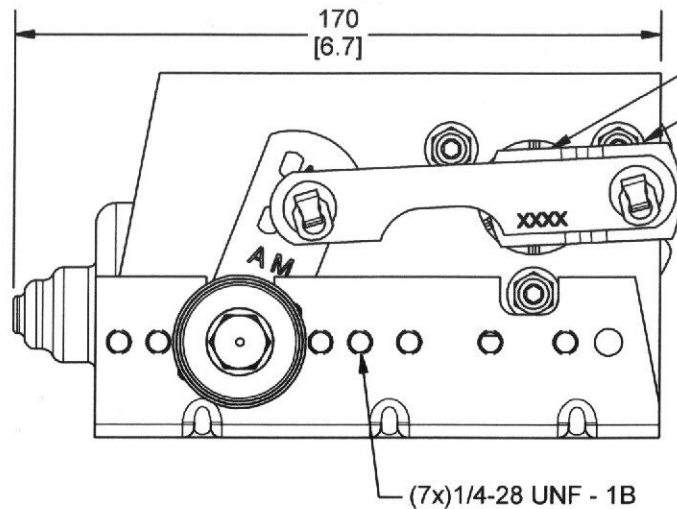
DRIVE ARM LENGTH: (00.0mm)

212=308-1119 (PIN)
222=308-1054 (PIN)
242=308-1053 (PIN)
268=308-1051 (PIN)
277=308-1095 (PIN)
295=308-1099 (PIN)
301=308-1048 (PIN)
312=308-1100 (PIN)
331=308-1049 (PIN)
339=308-1050 (PIN)
351=308-1052 (PIN)
371=308-1055 (PIN)
000=308-1031, 308-1032, 414-1011, 414-1012 (ADJUSTABLE)

DRIVE ARM TYPE:

A=ADJUSTABLE TYPE
P=PIN TYPE

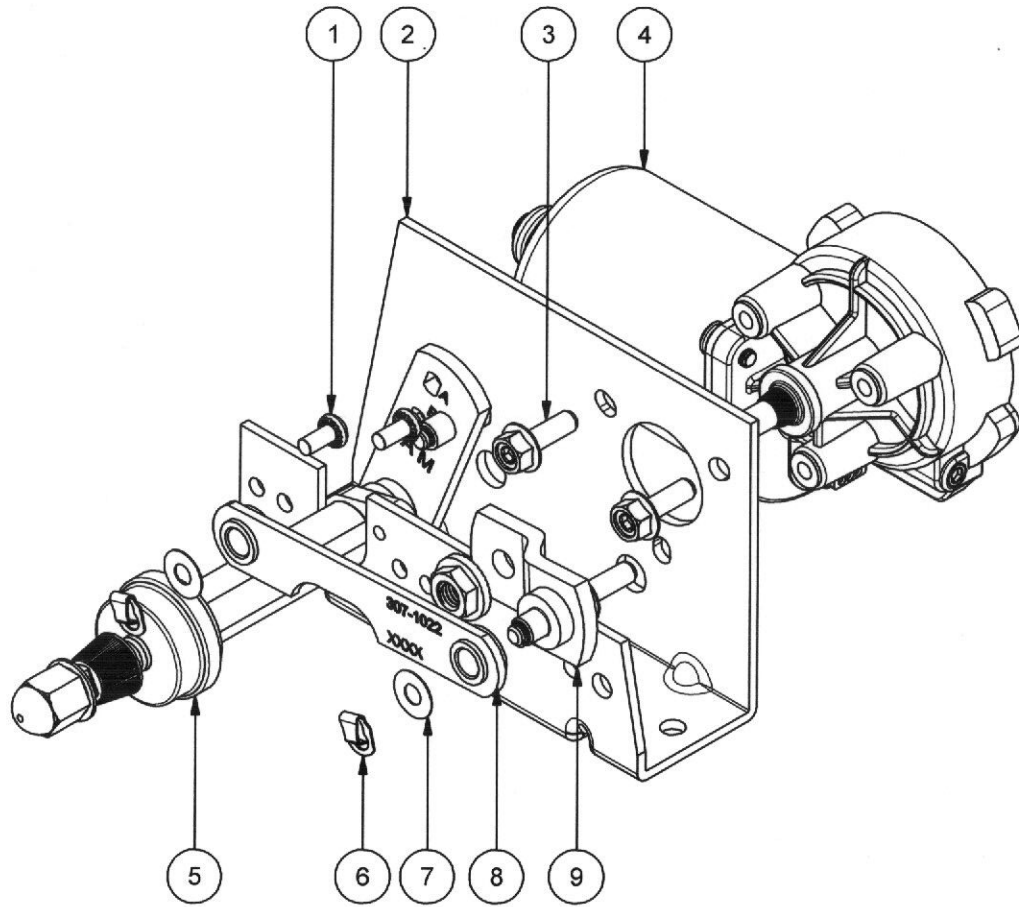
Bracket Type
Pivot Body Length (mm)
Pin Position
Length of Link (mm)
Motor
Drive Arm Length (mm)
Drive Arm Type
Park Setting (deg)




Dimensions are in: MM [INCHES]

Project	N/A	Designed by	ME	Revised by	JC	Checked by	GS	Material Specification	N/A	Finish Specification	N/A
		4/28/2010		3/29/2013		3/29/2013					
OVALS ARE FOR INCOMING INSPECTION CHECKING PROCESSES	UNLESS OTHERWISE SPECIFIED										
	TOLERANCES IN		INCHES		MM						
	1 PLACE DEC. =	N/A	±0.25								
2 PLACE DEC. =	±0.01	±0.13									
3 PLACE DEC. =	±0.005	±0.08									
4 PLACE DEC. =	±0.0025	N/A									
ANGULAR DIM. =	±1°	±1°									
DO NOT SCALE DRAWING WORK TO GIVEN DIMENSIONS											
			AM EQUIPMENT Jefferson, Oregon 97352 www.amequipment.com				Title/Name				
							Assy, Wiper Motor, 230 Unitized				
			Part Number			Revision		Sheet			
			230-CCCC			2		1 OF 3			
						3/29/2013					

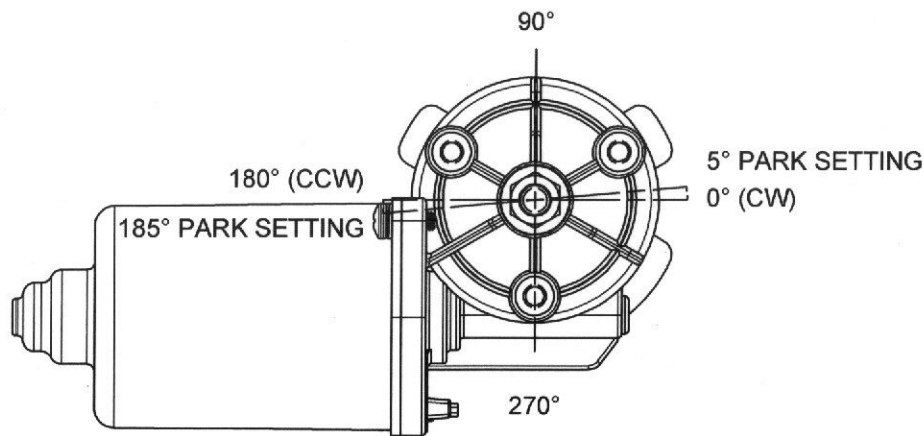
PARTS LIST		
ITEM	QTY	PART #
1	2	407-1064
2	1	SEE UPC
3	3	414-1131
4	1	SEE UPC
5	1	SEE UPC
6	2	407-1022
7	2	414-1005
8	1	SEE UPC
9	1	SEE UPC



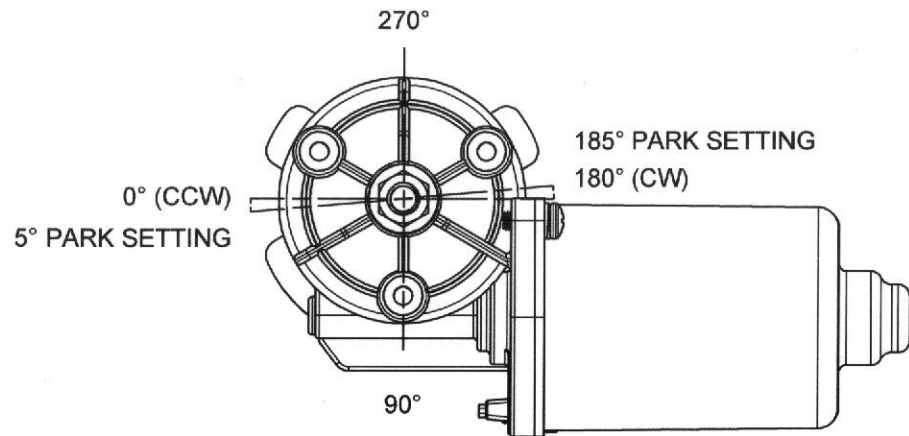
Dimensions are in:
MM [INCHES]

Project N/A	Designed by ME 4/28/2010	Revised by JC 3/29/2013	Checked by GS 3/29/2013	Material Specification N/A	Finish Specification N/A
OVALS ARE FOR INCOMING INSPECTION CHECKING PROCESSES	UNLESS OTHERWISE SPECIFIED TOLERANCES IN INCHES MM 1 PLACE DEC. = N/A ±0.25 2 PLACE DEC. = ±0.01 ±0.13 3 PLACE DEC. = ±0.005 ±0.08 4 PLACE DEC. = ±0.0025 N/A ANGULAR DIM. = ±1° ±1° DO NOT SCALE DRAWING WORK TO GIVEN DIMENSIONS			 <p>AM EQUIPMENT Jefferson, Oregon 97352 www.amequipment.com</p> <p>THIS DRAWING IS THE SOLE PROPERTY OF AM EQUIPMENT AND CANNOT BE REPRODUCED IN ANY WAY WITHOUT THE EXPRESS WRITTEN PERMISSION OF AM EQUIPMENT</p>	Title/Name Assy, Wiper Motor, 230 Unitized
	Part Number 230-CCCC	Revision 2 3/29/2013	Sheet 2 OF 3		

Wipe Angle Range	Pin Position	Link	Link Length	Drive Arm	Drive Arm Length	Pin Type
Adjustable 28-58	A	307-1094	853	308-1032	000	A
Adjustable 35-70	B	307-1094	853	308-1032	000	A
60-62	A	307-1072	785	308-1053	242	P
62-65	A	307-1022	859	308-1053	242	P
68-72	A	307-1022	859	308-1051	268	P
70-74	B	307-1037	754	308-1054	222	P
75-79	B	307-1072	785	308-1053	242	P
80-85	A	307-1022	859	308-1048	301	P
85-91	B	307-1022	859	308-1051	268	P
93-99	A	307-1022	859	308-1050	339	P
97-103	A	307-1022	859	308-1052	351	P
100-115	A	307-1072	785	308-1055	371	P
112-114	B	307-1002	830	308-1049	331	P




PARK SETTING LH HOUSING



PARK SETTING RH HOUSING

NOTE: UNITIZED BUILDS WITH THE ADJUSTABLE DRIVE ARM MUST HAVE THE OPPOSITE PARK SETTING (EXAMPLE: A LEFT HAND MOTOR USING AN ADJUSTABLE DRIVE ARM MUST SPECIFY 005 IN ORDER TO PARK CCW)

Dimensions are in:
MM [INCHES]

Project N/A	Designed by ME	Revised by JC	Checked by GS	Material Specification N/A	Finish Specification N/A		
OVALS ARE FOR INCOMING INSPECTION CHECKING PROCESSES	UNLESS OTHERWISE SPECIFIED TOLERANCES IN INCHES MM			 AM EQUIPMENT Jefferson, Oregon 97352 www.amequipment.com THIS DRAWING IS THE SOLE PROPERTY OF AM EQUIPMENT AND CANNOT BE REPRODUCED IN ANY WAY WITHOUT THE EXPRESS WRITTEN PERMISSION OF AM EQUIPMENT	Title/Name Assy, Wiper Motor, 230 Unitized		
	1 PLACE DEC. = N/A	±0.25			Part Number 230-CCCC	Revision 2	Sheet 3 OF 3
	2 PLACE DEC. = ±0.01	±0.13				3/29/2013	
3 PLACE DEC. = ±0.005	±0.08						
4 PLACE DEC. = ±0.0025	N/A						
ANGULAR DIM. = ±1°	±1°						
DO NOT SCALE DRAWING WORK TO GIVEN DIMENSIONS							