

**THE ICONIC TONINO LAMBORGHINI BATHROOM COLLECTION  
PRESENTED BY GLASS DESIGN  
AT SALONE DEL MOBILE 2024**

**Salone Internazionale del Mobile 2024 – Hall 10, Stand C07**



*April 2nd 2024, Bologna* – The iconic **Tonino Lamborghini** bathroom collection, a combination of design and heritage Made in Italy, will be showcased at the 2024 edition of **Salone Internazionale del Mobile** – taking place in **Milan from 16th to 21st April** - inside **Pavilion 10, Stand C07**.

Glass Design presents the complete collection of washbasins and bathroom accessories branded Tonino Lamborghini. An iconic and timeless collection, refined in its different declinations and cutting-edge in terms of originality of design and choice of materials. A combination of fascinating proposals that meet all different tastes, elevating the concept of absolute quality: every smallest detail is the result of research, style and high craftsmanship.

Through the interpretation of the values of design quality, design aesthetics and luxury lifestyle inherent to the DNA of the brand Tonino

Lamborghini, Glass Design's long-standing history in employing traditional and innovative materials has resulted in a unique collection where the different proposals vary not only in aesthetics but also in the type of materials used. Among other things, the new collection aims to be part of the interior design, hospitality and real estate projects that Tonino Lamborghini is developing globally with the aim of promoting Made in Italy in the world and at the same time guaranteeing an increasingly immersive brand experience, the Tonino Lamborghini Total Living.

Available in seven iconic solutions, the Tonino Lamborghini collection introduces a new vision of the bathroom. An elegant and functional environment characterized by a sophisticated mood and by details, such as the precise lines, the faceted and aerodynamic surfaces, the chromatic details and the mirrored elements, which recall the Heritage of the brand of the Charging Bull. In each of its configurations, the Tonino Lamborghini bathroom expresses the strength of a unique and unconventional design, the result of an entirely Made in Italy manufacturing.



**VISION** is a collection of countertop and freestanding washbasins, fashioned from Vetrofreddo<sup>®</sup>, an innovative material composed of glass pigments and fine resins. Creativity has no limits thanks to this material's main feature of versatility in adapting to any shape and the possibility to draw on a wide range of glossy and mat colours.

The washbasin inside, black coloured, comes with original grooves realized with a particular working process. The outside, smooth and material to the touch, is proposed in the brand-new Sahara Rose finish: elegant and alluring, finely matching with any wood essence and lacquered tone.

The Tonino Lamborghini brand logo, discreetly placed on the washbasin front, contributes to define a strong and recognizable personality in the luxury industry.

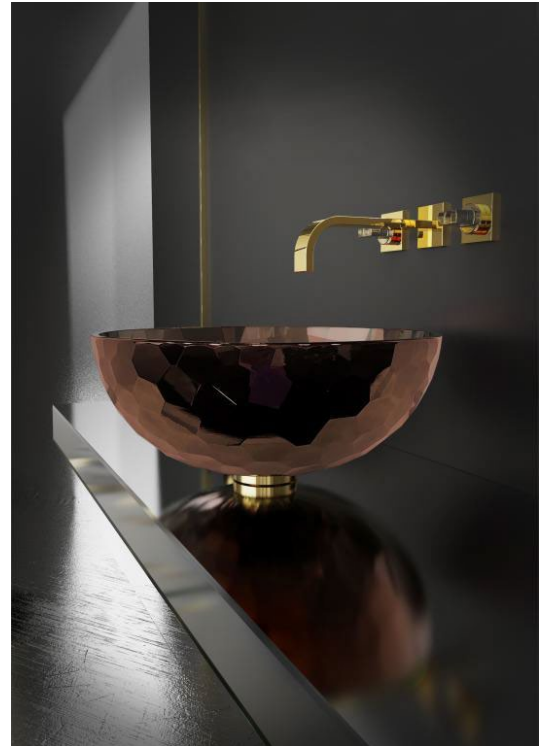
A cutting-edge technological detail is the new automatic drain with integrated overflow, which allows the automatic discharge of the water when a certain pre-established capacity is reached.

**VISION Concept**, countertop washbasin, and **VISION Edition**, freestanding version, are proposed with their matching mirrors, creating a truly emotional total look. The mirrors, by fulfilling their function of finely coordinated accessory, with their side LED-lighting system, enhance finishes and shapes.

The **VISION** collection is launched on the market with a strong and uncompromising style: a geometric composition where the matter develops in trapezoidal shapes creating taut and convergent surfaces.

Luxury and design merge into a collection with a striking and distinctive personality.

Measures: - VISION Concept mm 586x400xH170 – VISION Mirror mm 527x35xH900  
- VISION Edition mm 586x400xH900 – VISION Mirror XL mm 660x37xH2000



The **ALLURE** collection branded Tonino Lamborghini is the essence of the most refined elegance where the main character is “Cristallo de' Medici®”.

Purest at 24% pb, the crystal is skillfully worked by master craftsmen according to the most ancient and noble glass arts. Mouth-blown and stone-ground, without employing neither machines nor technology, the crystal takes shape and transforms into a collection of fascinating and futuristic washbasins in their traditionally timeless identity.

The **ALLURE** countertop washbasins fashioned from pure “Cristallo de Medici” are characterized by external faceting, which create a captivating interplay of light and reflection, adding to the environment energy and absolute elegance.

The **ALLURE** washbasin, available in oval and round shape, are proposed in Gold, Silver, Bronze, Red, Green and Blue shades, equipped with the gold, black or chrome waste, branded Tonino Lamborghini. The collection also includes sophisticated bathroom accessories such as the soap dispenser, the fragrance diffuser and the tissue box, fashioned from Cristallo de' Medici® and finely coordinated to the washbasins colours range.

**ALLURE** represents a perfect combination of aesthetic beauty and quality craftsmanship, a harmonious fusion between art and contemporaneity.

Measures: - ALLURE round mm Ø435xH188 - ALLURE oval mm 560x380xH163



Unconventional, captivating, one-of-a-kind. **ICONICO** is a freestanding washbasin with an impressive presence and a strong character. Inspired by the Heritage of Tonino Lamborghini, **ICONICO** stands out for its soft edges. Fashioned from VetroFreddo®, features a bicolour structure with an inner black core and coloured external details. The lighting system enhances the futuristic and technological design of this washbasin, giving to it a decisive and emotional look. The coloured outer shells, available in Orange Mat, Acid Green Mat, Light Blue Mat, White at and Black Mat, allow various customization possibilities meeting every taste.

Measures: - **ICONICO** mm 522x478xH900

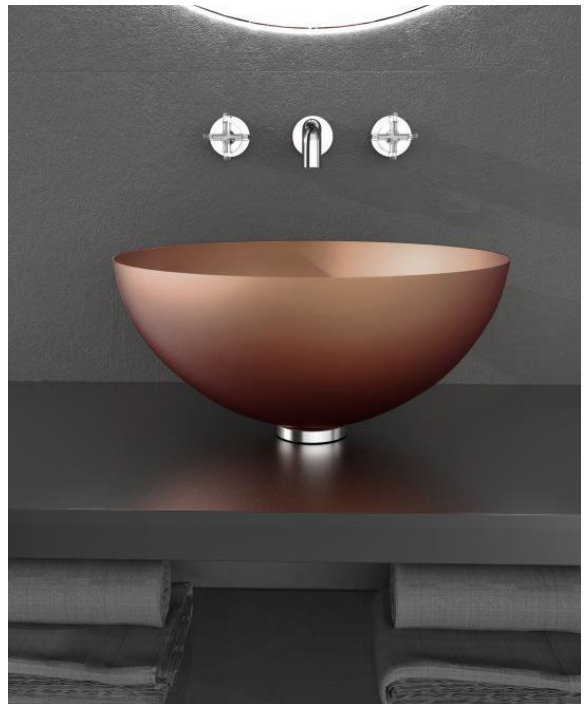
**MOONSHINE** is the Tonino Lamborghini bathroom collection that emphasizes aluminum as an identifying material. One of the most widespread materials in nature, very light, corrosion resistant and 100% recyclable.

The **MOONSHINE** countertop washbasins with its hemispherical shape, embody a sleek and modern aesthetic thanks to the choice of this material.

Minimalist, essential, intriguing, featuring a thickness of merely 2 mm which gives them a natural lightness while ensuring durability and solidity and no compromise on functionality.

**MOONSHINE** washbasins confirm themselves as the thinnest and lightest washbasins available on the market today. In their Blue, Grey, Rosa Sahara and Copper color variants, they become the focal point of a contemporary and highly distinctive bathroom, where the Tonino Lamborghini soul is evident from the innovation and aesthetics applied to this new collection.

Measures: MOONSHINE mm Ø 435xH220 Aluminum AL 20/10  
UNI EN 2409 Certification

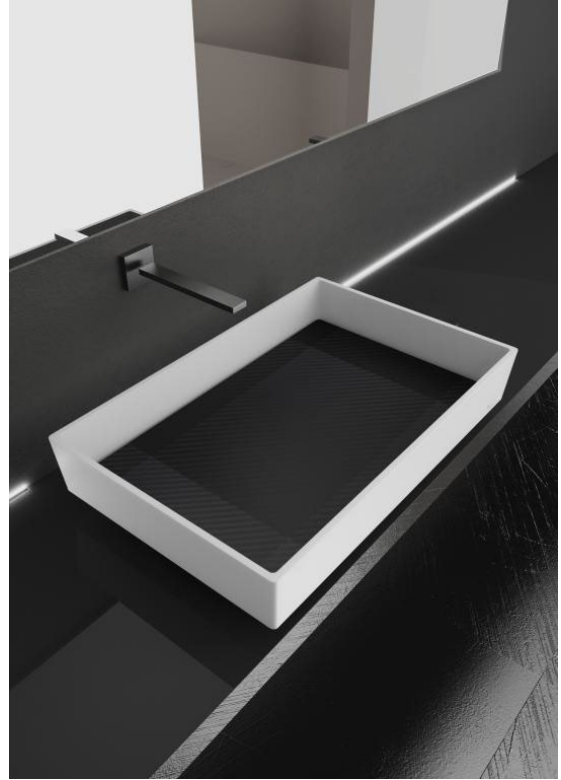




Let yourself be carried away from the beauty and refinement of the **MARMOFUSION** collection by Tonino Lamborghini, which mix traditional materials with a highly contemporary design. Crystal and marble, expertly crafted, merge into an elegant and surprisingly contemporary combination where style and vision are made by details.

**MARMOFUSION** is a collection of countertop washbasins where the fumé crystal, featuring a handcrafted diamond-cut, is skillfully assembled on a round base in white, black, pink or red precious marble. The result is a unique product of outstanding quality that conveys an aura of brightness and elegance. The Tonino Lamborghini-branded waste, together with the matching marble knobs, are thought for those who pay attention to details and want their bathrooms to be fascinating and captivating places.

Measures: - MARMOFUSION mm Ø 387XH125



**CARBON TECH** is the Tonino Lamborghini series outlined by the strong stylistic and technological signature linked to the DNA of the Charging Bull. A cutting-edge collection of countertop washbasins made of Pert®, a polymer with exceptional qualities that combines a low specific weight with high resistance.

The **CARBON TECH** washbasin boasts advanced details, such as the rectangular carbon finish grating which covers the internal surface of the basin, concealing the drain and providing a unique effect to the water flow. Proposed in square and rectangular versions, they are available in white, black and gray finishes, which have always been synonymous with absolute class and elegance. The internal carbon finish plays a de-cisive role, allowing the light to create a synergy with the basin itself, showing the geometries in the purest and most essential way.

Measures: - CARBON TECH mm 400x400xH140

- CARBON TECH XL mm 610x400xH140



**LOFT** is the collection of accessories designed to elegantly complete the bathroom branded Tonino Lamborghini.

A series of refined and functional objects fashioned from Vetrefreddo®, an innovative material composed of glass pigments and resins, which contribute to customize and give an identify the style of a captivating environment, starting from the smallest details.

**LOFT** accessories, such as soap dispensers, tumblers, towel holders, paper holders and robe hooks, are geometric and essential in their shapes and can be easily mounted on the wall.

The choice of the material Vetrefreddo®, allows an extremely easy maintenance: they can be washed with any type of soap or neutral and non-abrasive liquid detergent and, in case of superficial scratches, they can be repaired with just a cloth, soaked in oil or cream.

The **LOFT** series is a collection of very high-quality accessories, available in different finishes and customizable on request, which completes the environment by offering a combination of sophisticated modernity and functionality.

Measures: - LOFT Dispenser mm 72x92,5xH164 - LOFT Tumbler mm 72x92,5xH110  
- LOFT Towel holder mm 338 - LOFT Paper holder mm 154  
- LOFT Robe hook mm 50x58xH50





## TONINO LAMBORGHINI GROUP

The Tonino Lamborghini company was founded in 1981 by Tonino Lamborghini, heir to the homonymous family. Today the company is based in the splendid Palazzo del Vignola, a Renaissance villa on the outskirts of Bologna, designed by the famous architect Jacopo Barozzi, known as 'Il Vignola'.

Combining quality, design and entrepreneurial innovation, for over 40 years the Tonino Lamborghini brand has been committed to the ambitious mission of spreading the very essence of "Italian Living" around the world - a tradition rooted in the family history and which continues to constantly evolve to make Tonino Lamborghini a global symbol of elegance, distinction and prestige.

Luxury is not a concept that concerns only material wealth, but is rather a state of mind, a characteristic of the spirit, the courage to rethink everyday life to transform it into an extraordinary experience, fully enjoying the most authentic pleasure of life, through the excellence of craftsmanship and design.

Drawing inspiration from his family heritage, Comm. Lamborghini has therefore created a 'lifestyle experience brand' which today designs exclusive fashion accessories such as watches, glasses, leather goods but also furnishing accessories and luxury beverages. Furthermore, it adds value to specific real estate projects around the world, customizing them with its own brand, dressing suites and interiors with the unmistakable style characterized by the 'Charging Bull' on a red background symbol.

PRESS OFFICE: Alessandra Busignani [press@lamborghini.it](mailto:press@lamborghini.it)

*We would like to remind you that the companies of Comm. Tonino Lamborghini and the "Tonino Lamborghini" branded products are not connected in any way with the company Automobili Lamborghini, now owned by the Audi-VW Group, founded in 1963 by Cav. del Lavoro Ferruccio Lamborghini, father of Tonino Lamborghini. Thank you.*

## GLASS DESIGN

Glass Design is an Italian excellence in the production and design of bathroom washbasins and interior decoration furnishings.

Located in Vinci, in the heart of Tuscany and native town of "Leonardo da Vinci", Glass Design was founded in 1984 by the Borsellini family, further to a long tradition in manufacturing artistic glass.

Both by using technologically advanced materials such as stainless steel or silicone, and by working in an artistic way with traditional materials like the formed 24%pb crystal and the artisan glass, the company Glass Design contributes to the creation of a new style, where even the accessory is



*Tonino Lamborghini*

TOTAL LIVING

addressed in all details, becoming the main subject of the environment, a true “fashion” product, highly appreciated in the world and exported to more than 60 countries.

Over 200 Tuscan artisans and more than 15 glassmakers of Murano work within the company’s production chain, enabling the customization of each product to suit individual needs and specific requirements, in order to create unique and exclusive products.