

Low Investment  
Hight Returns

\*\*ROI in 2.5 years



**KIWI**<sup>®</sup>  
KISAN WINDOW

Franchise  
Available

Call now  
+919012662662



Own a Health & Wellness Grocery Store  
in Delhi NCR & Chandigarh Tricity



83%  
Indians  
want to  
become  
**BUSINESS  
OWNER**

We have a  
BIG  
OPPORTUNITY  
for YOU

Organised  
Health &  
Wellness  
Grocery Store  
& Cafe  
Business



**1.4 Bn+**  
Population

**4<sup>th</sup>**  
Largest Retail  
Market

**\$2 Tn+**  
Indian Retail  
industry by 2032

Health & Wellness  
Grocery & Cafe Retail is the best  
Successful Business with  
Unlimited Upsides

# About Kiwi Kisan Window

Started in 2018 , Kiwi Kisan Window is a Health & Wellness Chain of Grocery Store & Cafe with Omni Sales Channel Across India serving 1200+ SKUs like pulses, spices, herbs, oils pickles, jam, tea, coffee, dry fruits, ready to eat, squashes, cold pressed juices & fresh salads.

We are a tech enabled Farm to Fork Grocery Brand, that is Head Quatered in Dehradun with its Factory Setup.



We are India's Healthiest Grocery Store & Cafe with hyperlocal delivery network.

# Our Flagship Stores



# EC Road, Dehradun





# Rajpur Road, Dehradun



# Sec 34 B, Chandigarh



# Sec 118, Mohali



Kiwi Kisan Window is Trusted by

**Forbes**

**#startupindia**



Startup   
Uttarakhand



THE TIMES OF INDIA



**YOUR  
STORY** | INSPIRE  
INNOVATE  
IGNITE



 **The Indian EXPRESS**

**PURE&ECO™ INDIA**  
*Organics. Eco Lifestyle. Environment*

# WHY KIWI KISAN WINDOW

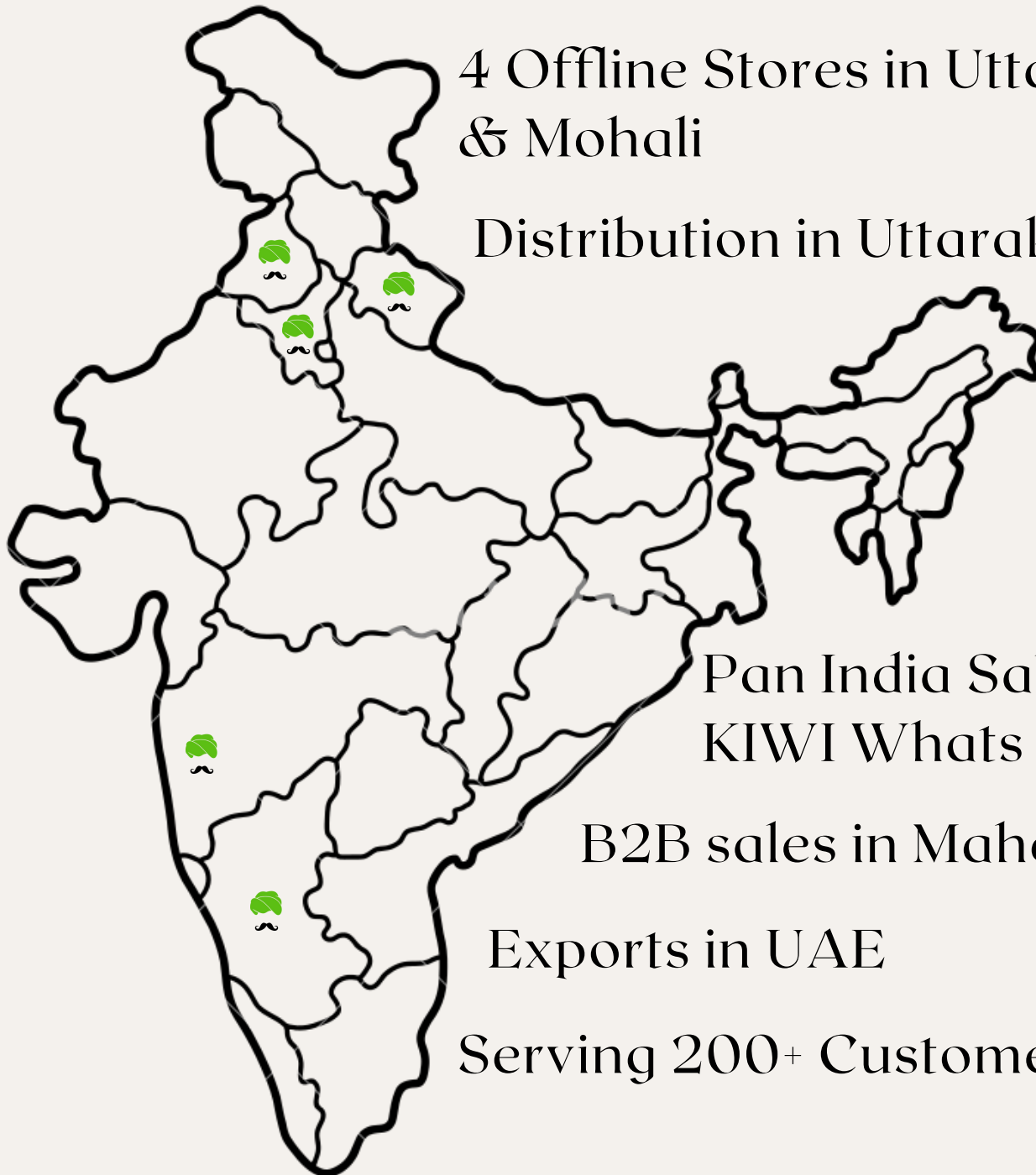
INDIA'S FIRST  
HEALTH & WELLNESS  
GROCERY RETAIL STORE  
& CAFE

- **STRONG BRAND, TRULY OMNICHANNEL**
- **READY POOL OF 500+ LOCATIONS**
- **FASTEST PAY BACK IN FRANCHISE**
- **IT, MARKETING & OPERATIONS SUPPORT**
- **LEGAL & LICENSING SUPPORT**
- **EASY EXIT PROCEDURE**
- **ON GOING TRAINING SUPPORT**
- **SAFE INVESTMENT**

# Our Presence

4 Offline Stores in Uttarakhand, Chandigharn & Mohali

Distribution in Uttarakhand



Pan India Sales via KIWI App & KIWI Whats App Bot

B2B sales in Maharashtra & Karnataka

Exports in UAE

Serving 200+ Customers Daily

# THE BEST FRANCHISE

## LOW INVESTMENT RS 55 LACS

### Invest

Rs. 40 Lacs

Interiors  
Equipments  
IT Infrastructure  
Racks  
Cafe Kitchen & Seating  
Billing Counter  
Franchise Fee & Property Acquisition cost

### Work

Rs. 15 Lacs

Inventory  
50+ Categories  
1200+ SKUs  
10,000+ packets & Bottels



# UNIT ECONOMICS

ROI IN 2.5 YEARS\*  
UP TO 40 % ROI PER ANNUM\*

*High Sale*

**22  
Lacs**

**PER MONTH**

**6% ON 22 LACS  
PER MONTH**

**ROI =Rs.1,32,000  
per month**

**29% ROI  
per annum**

*Average Sale*

**16  
Lacs**

**PER MONTH**

**6% ON 16 LACS  
PER MONTH**

**ROI =Rs.96,000  
per month**

**21% ROI  
per annum**

*low Sale*

**13  
Lacs**

**PER MONTH**

**6% ON 13 LACS  
PER MONTH**

**ROI =Rs.78,000  
per month**

**17% ROI  
per annum**

\*Above mentioned are projected Sales



# UNIT ECONOMICS

ROI IN 2.5 YEARS\*  
UP TO 40% ROI PER ANNUM\*

*Super High Sale*

**30  
Lacs**

**PER MONTH**

**6% ON 30 LACS  
PER MONTH**

**ROI =Rs.1,80,000  
per month**

**Up to 40% ROI  
per annum**

\*Above mentioned are projected Sales

# Exterior



# Exterior



# Exterior



# Interior & Exterior



# Interior & Equipment



# Interior & Equipment



# Cafe





# Cafe



# Cafe Products



# Product Display



# Product Display



# Product Display



# Seating



# Customer Experience



# Customer Experience





# Customer Experience



# Customer Experience



# Customer Experience



# Team



# Team



# Team

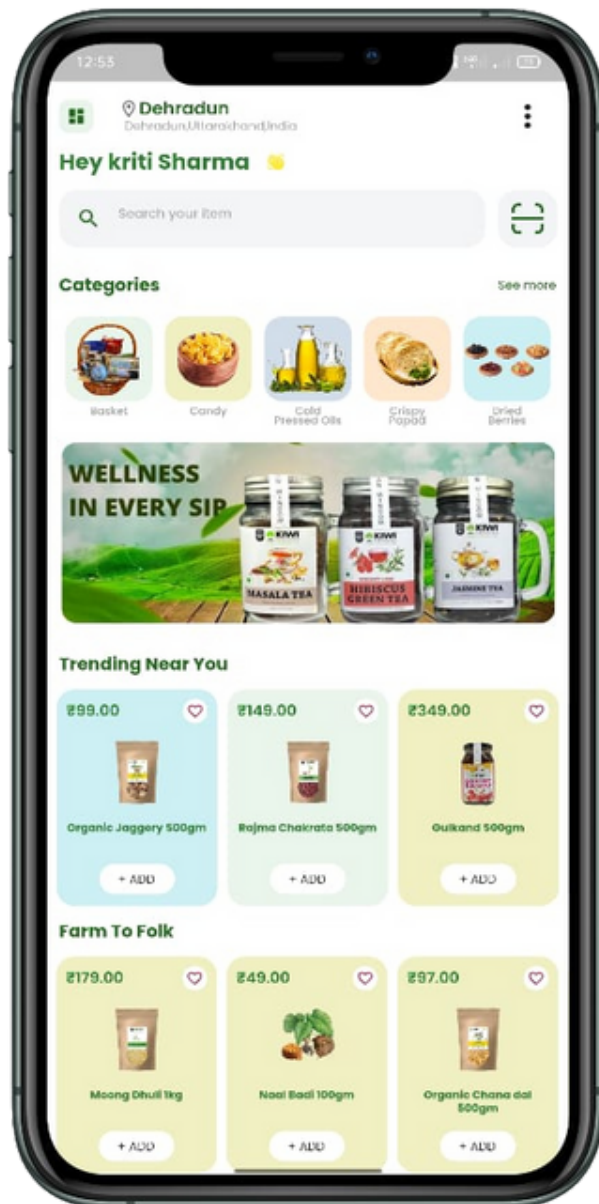


# Inventory





# A HEALTH & WELLNESS FOOD BRAND



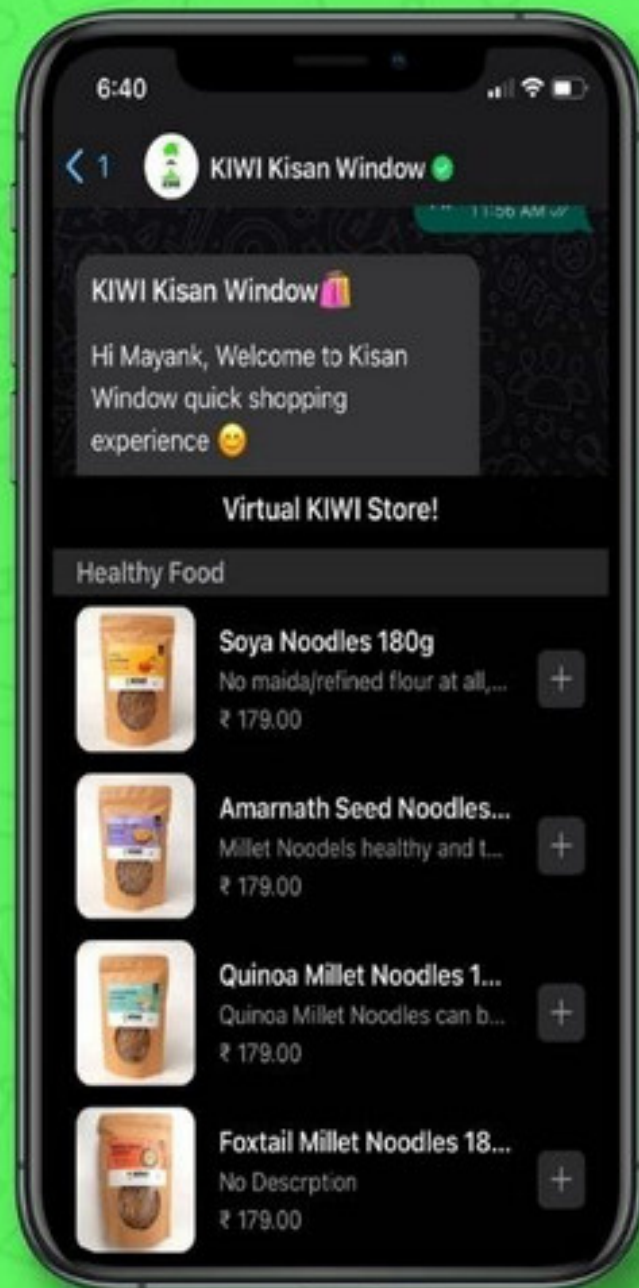
Scan to Download

Our App





**10% OFF**  
+  
**FREE DELIVERY**

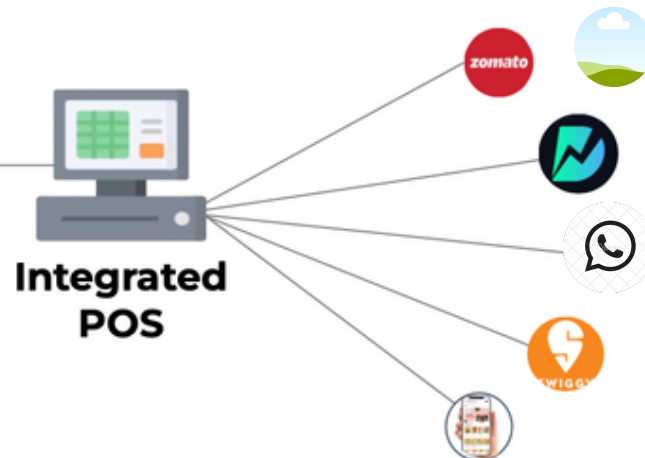


**Now Shop from Kiwi Kisan Window directly on Whats App**

# Technology



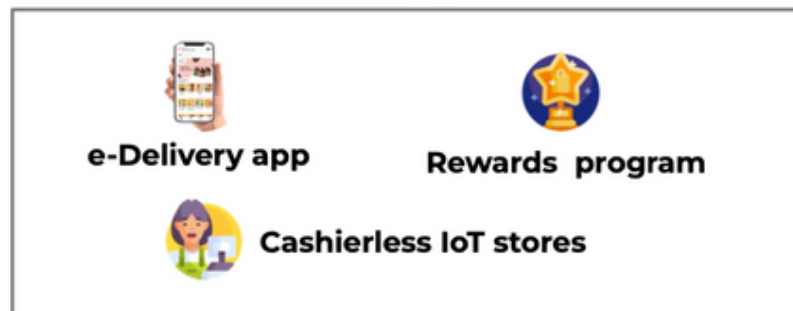
**Store**



**Integrated  
POS**



**Customer  
Experience**



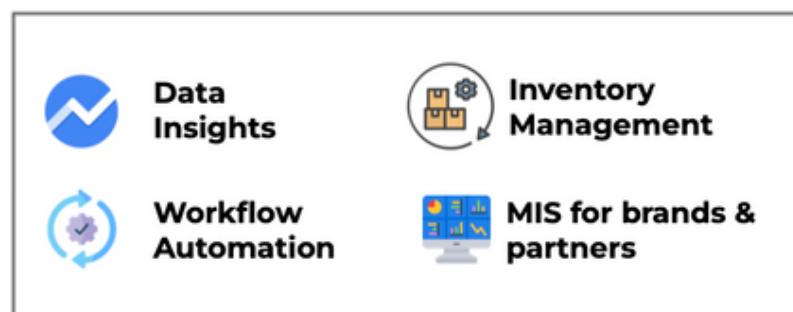
**e-Delivery app**

**Rewards program**

**Cashierless IoT stores**



**Business &  
Operations**



**Data  
Insights**

**Inventory  
Management**

**Workflow  
Automation**

**MIS for brands &  
partners**

**ONE  
Database  
with  
end-to-end  
integration**

# Franchise Support

## Franchise Owned Company Operated

Layout

Interiors

Exterior

Signage

Branding

Marketing

IT Hardware

IT Software

SOPs

HR

Accounting

Relationship  
Manager

Inventory

Training

Licensing

Google Listing

Staff Accessory

QComm Tech

# Advantages of Owning a Kiwi Kisan Window Franchise

1st  
Health & Wellness  
Grocery Brand

Single Brand Store

Onmi Channel Sales

Low Investment

High Returns

ROI less than  
24 months

Highest Industry  
Margins

Legal Support

Training Support

Operational  
Excellence

Excellent  
Technology

Lockdown Proof

Easy Exit Mechanism

Innovative Products

Amazing Marketing

30 days to  
Launch a Store

Plug & Play Concept

Scalable

Contact Us Now  
+91 9012662662



Low Investment  
Hight Returns

\*\*ROI in 2.5 Years



**KIWI**<sup>®</sup>  
KISAN WINDOW

Franchise  
Available

Call now  
+91 9012662662



Own a Health & Wellness Grocery Store & Cafe  
in Delhi NCR & Chandigarh Tricity