

HOW'S YOUR HEAD?

The UK's Premium Theatrical Synthetic Hair!

MATILDA THE MOVIE

See our stunning hair, on the
fabulous 'Hair & Makeup'
BAFTA nominated movie!

Stunning salon quality shades
on our beautiful unique fibre blend!

PROFESSIONAL SOLUTIONS

Professional discount for self employed wig makers and stylists!

Exclusive business rates for studios and production companies!

UK based, with fast turnaround and delivery service!

*Range of payment options to suit you
And your budget!*

HYH create the perfect balance of beautiful colour, great fibre and structure to deliver the UK's theatrical quality synthetic hair.

We are professional artists, who struggled to find good synthetic hair... that's how it all began! We now deliver realistic looking fibre that looks fabulous under all kinds of lighting. Our synthetic blend has the perfect balance of slip and grip, more robust and longer lasting than human hair. Stylists rate our products five star based on the fibre being super manageable, achieving wonderful texture and volume. Wearers love the comfort of our wig caps and quality of our hard front and lace options.

With the assistance of National Hair Federation 'Hairdresser of the Year' winner - Andi Needham - we created multi-dimensional colour which replicates the depth and sheen of freshly salon coloured hair!

Our products are unique and not mass produced stock wigs, you will not find our structure, blends, colours or techniques anywhere else – that's why you'll find our tag proudly sewn into them.

COUTURE

*We pride ourselves on having the industries best ever salon shades!
Inspired by icons, our Couture collection is simply exquisite*



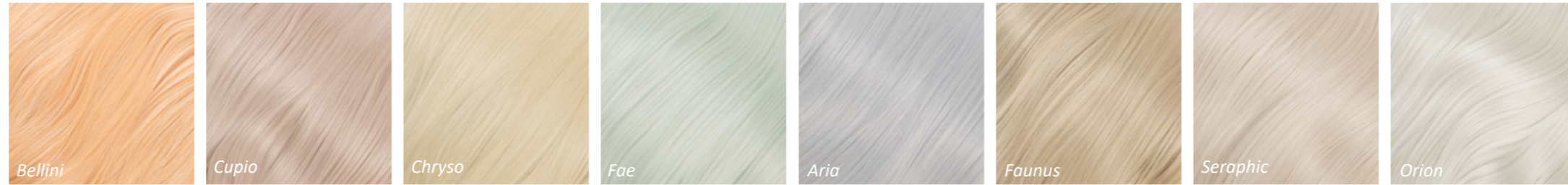
AMAZON ORIGINAL



CINDERELLA

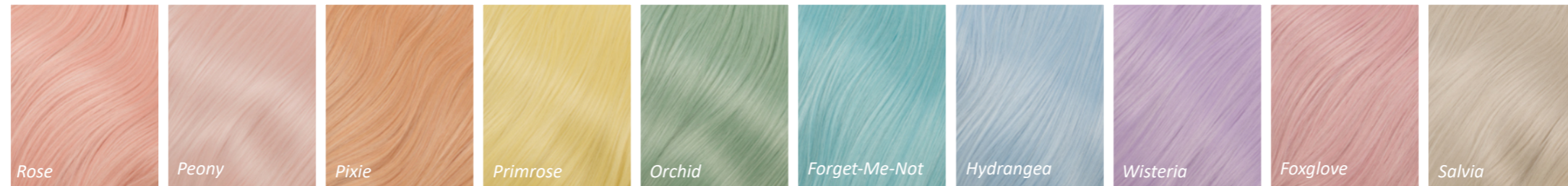


Ethereal



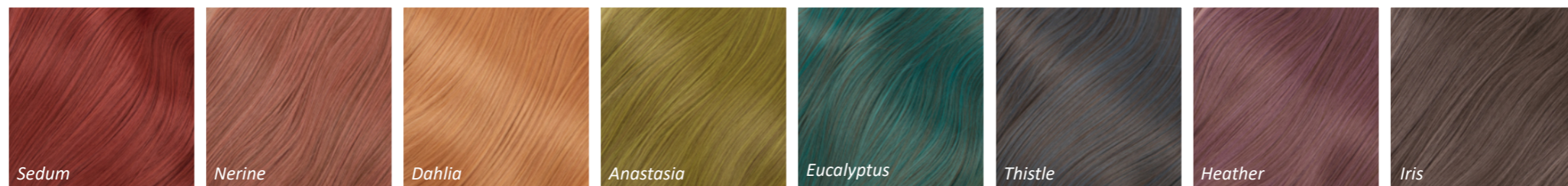
Platinum base with just a hint of colour. Inspired by fictional Elven characters featured in art and film.

Pastellic



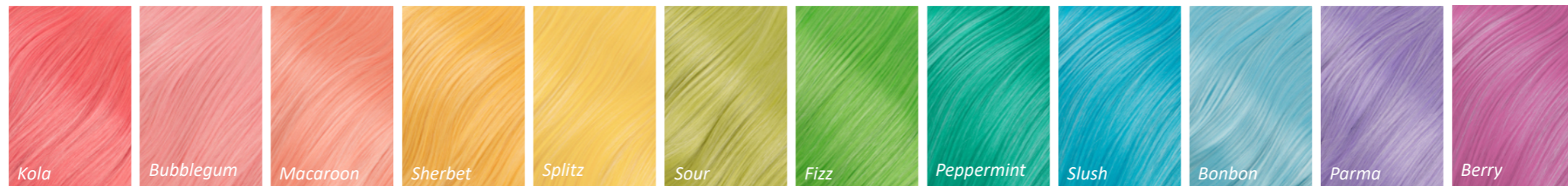
Soft metallic pastels. Inspired by spring bloom and bouquet florals.

Fashionista



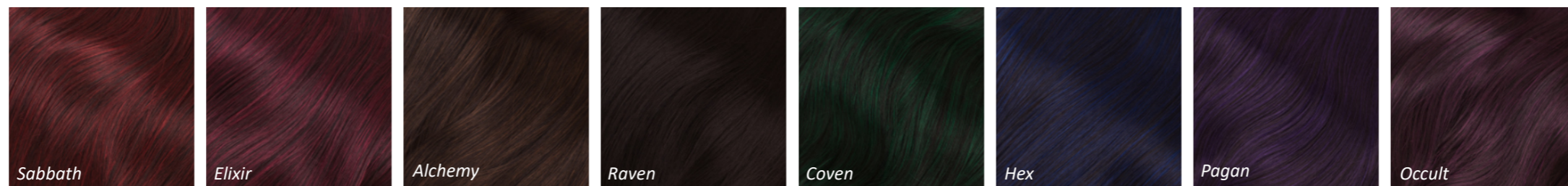
Muted fashion shades. Inspired by Autumn and Winter nature.

Kandi



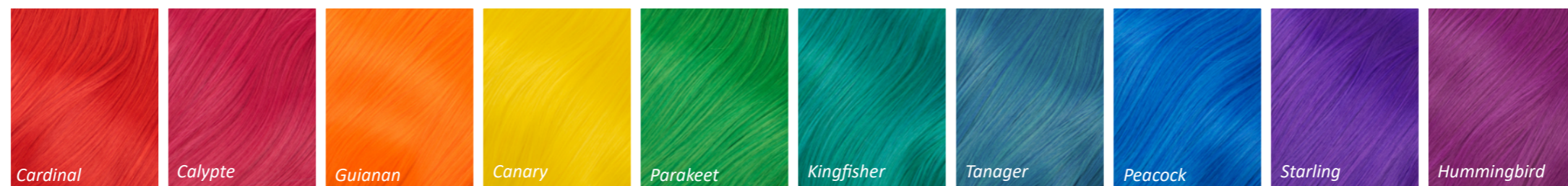
Bright and cheerful colours. Inspired by candy and sweet treats.

Twilight



Intense blackened shades. Inspired by dramatic TV and film horror and fantasy.

Vivid



Vibrant and intense colour. Inspired by the plumage of vibrant birds.



From the creator of
WILLY WONKA & THE CHOCOLATE FACTORY



INTRODUCING
ALISHA WEIR **LASHANA LYNCH** **STEPHEN GRAHAM** **ANDREA RISEBOROUGH** **AND EMMA THOMPSON**

ROALD DAHL'S
Matilda
 The Musical

Songs By **TIM MINCHIN**
 Screenplay by **DENNIS KELLY** Directed by **MATTHEW WARCHUS**

IN SELECT THEATERS DECEMBER

NETFLIX | DECEMBER 25



All our wigs benefit from fabulous multidimensional hybrid fibre blend and 200% density to allow for shedding, teasing, layering, thinning, styling and volume. All of our wigs are razor hand finished for realistic hair movement and texture.

We offer three types of structure to meet varying budgets and styling needs.



Lace-less Tease n' Please

Great value for natural styling! With completely customisable front, if you are not lifting or pulling the fibre up or back to expose the hairline, you can save money! Super convincing with strategic placement and ensuring the fibre frames the face to conceal edges.

- Zigzag part anywhere.
- Full front.
- Perma teased throughout for volume and disguising the unique track placement.



Hand tied Lace front

The **most diverse and realistic**, essential when exposing the hairline around the face. If you want to create a style where the front or sides are pulled back or up away from the face, you are going to need a lace front wig.

- Natural hair line and parting patterning for realistic growth illusion.
- Synthetic HD lace, virtually invisible and firm for glue-less wear.
- 1" parting area.



Lace-less Bang

More bang for your buck! it simply doesn't make sense to invest in lace fronting to hide all the amazing work of hard tying with bangs!

- Un-rooted.
- Lay-flat front bang with skin top for realistic crown.
- Perma teased roots throughout the body of the wig.







LET'S GET SOCIAL!

Follow us @howsyourheadwigs to discover our clients behind the scenes and hair exclusives!



STUNNING SALON QUALITY SHADES
ON OUR BEAUTIFUL UNIQUE FIBRE BLEND!

www.howsyourheadwigs.com