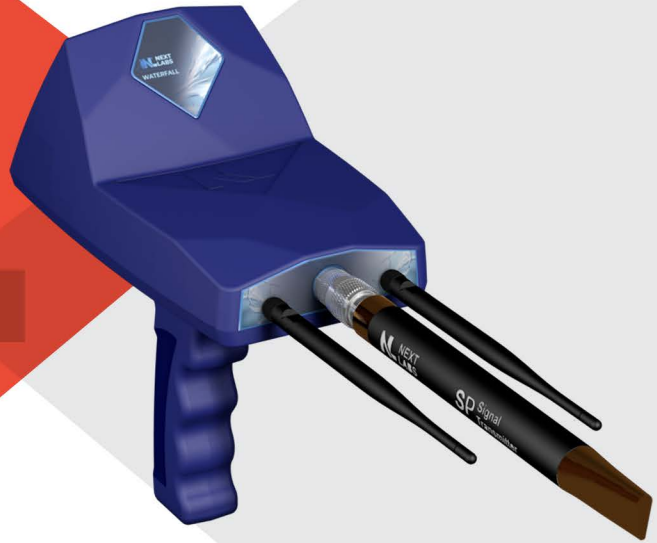




WATERFALL

To discover underground water

USER MANUAL



Firstly

**We thank you for choosing
NEXT LABS detectors and
we wish you the best of
luck in your adventures**

WATERFALL

To discover underground water

Critical Warning

**Be sure to read the instruction of how to use
The device correctly to get accurate results**



**1- The device cannot be used will its raining
to avoid any technical error**



**2- Always keep the battery charged
to avoid battery breakdown**



**3- Do not use any different charger
to avoid battery damage**



**4- Main unit of the device is under Guarantee
against all electronic breakdowns for three (3) years**



**5- Keep the device with in it protective
case will transporting the device**





Overview

WATERFALL:

**Is a long-range searching device
to discover underground water**

**And Wells Easy to use and very
light weight for long hours of search**



Overview

Search system:

Allowed you to search for all type of water under the ground in a very easy and sample way

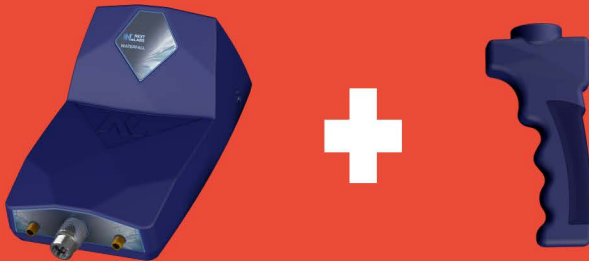
The device can detect drinkable water and salty water and mineralized water

The device depth is 750 meters underground and it can cover up to 3000-meter squares front range



Assembly steps

1- Connect the handle of the device as in the photo and make sure its locked correctly



2- connect the antennas on the front side of the device



3- start the device by pressing the on/off button under the screen

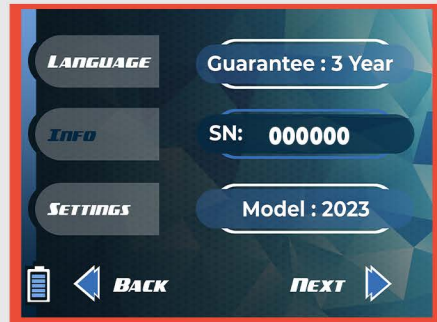
Operating steps:



1- The device will automatically start and transfer you to the main page.

The main page contains 3 option languages and info and settings

2- by pressing info, the device will display the information of the device such as serial number and manufacturing year and guaranty buried



3- The sitting option will allow you to change the sound and brightness level according to your needs



Operating steps:



4- language option will transfer you to the device languages which is you can select the language you want the device to operate in

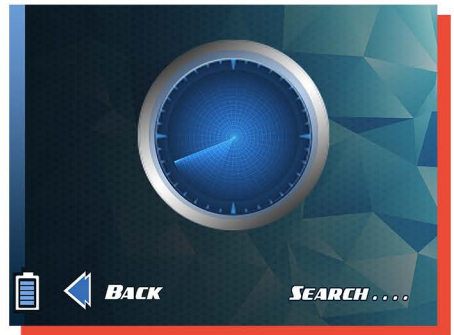
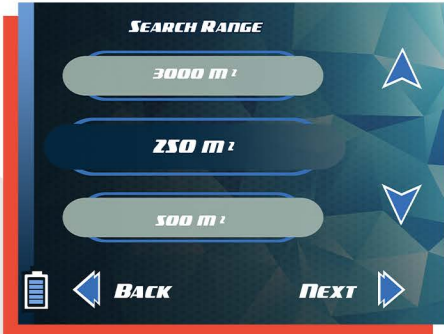
5- After selecting the language search type menu will appear on the screen to select the target you want search for it

6- After selecting target type front range will appear on the screen to select the range you want to cover in your search



Operating steps:

**7-After selecting the front range, the search page will appear on the screen
Now the device is ready for your search**



7- To get most accurate results hold the device by lifting it up to 90 degrees in the same way as in the following photo



Operating steps:

10- Move directly without shaking the device and the device will guide you throw the target location if exist in the area you are in

11- When the device is above the target The device will star spinning alerting you that a target has been detect it

12- And if the device turns back this means the target exist behind you and you should turn and start walking



Parts and accessories:

Device main unite



SP antenna



Device grip



2 lithium-ion battery



2 recipient antennas



Compass



car & home chargers



Note:

Guarantee includes all technical issues

Batteries are not under guarantee

The device breakdown due to user
cause its not included in the guarantee.

For further information please do not hesitate
to contact our support team to assist you,
also please check our website from more
videos and visual instruction

The logo for Next Labs, featuring a stylized 'N' followed by the words 'NEXT LABS' in a bold, sans-serif font. The logo is white and is positioned on a red, angular background element.

**N NEXT
LABS**





Get In Touch

P : +491788202552

E : nextlab.detectors@gmail.com

W : nextlabsdetectors.com