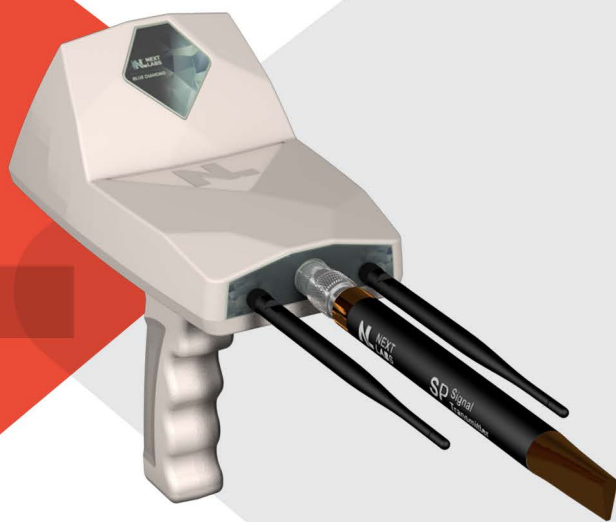




# BLUE DIAMOND

Diamond & gemstones detector

# USER MANUAL



# Firstly

**We thank you for choosing  
NEXT LABS detectors and  
we wish you the best of  
luck in your adventures**



# BLUE DIAMOND

Diamond & gemstones detector

## Critical Warning

---

**Be sure to read the instruction of how to use  
The device correctly to get accurate results**



**1- The device cannot be used will its raining  
to avoid any technical error**



**2- Always keep the battery charged  
to avoid battery breakdown**



**3- Do not use any different charger  
to avoid battery damage**



**4- Main unit of the device is under Guarantee  
against all electronic breakdowns for three (3) years**



**5- Keep the device with in it protective  
case will transporting the device**





## Overview

### **Blue diamond :**

**is a long-range searching device  
for both diamond and gemstones  
in the same device**

**Easy to use and very light weight for  
long hours of search and treasure hunting**



# Overview

## Search targets:

**This device is made to search**

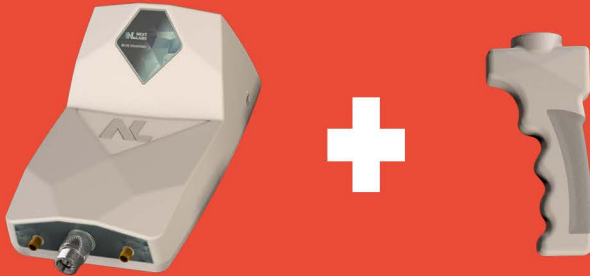
**Diamond**  
**Ruby**  
**Sapphire**  
**Emerald**  
**Tourmaline**  
**Quartz**  
**Garnet**  
**Coral**  
**Torques**  
**Pearl**

**The device depth is 25 meters underground  
and it can cover up to 3000-meter squares  
front range**

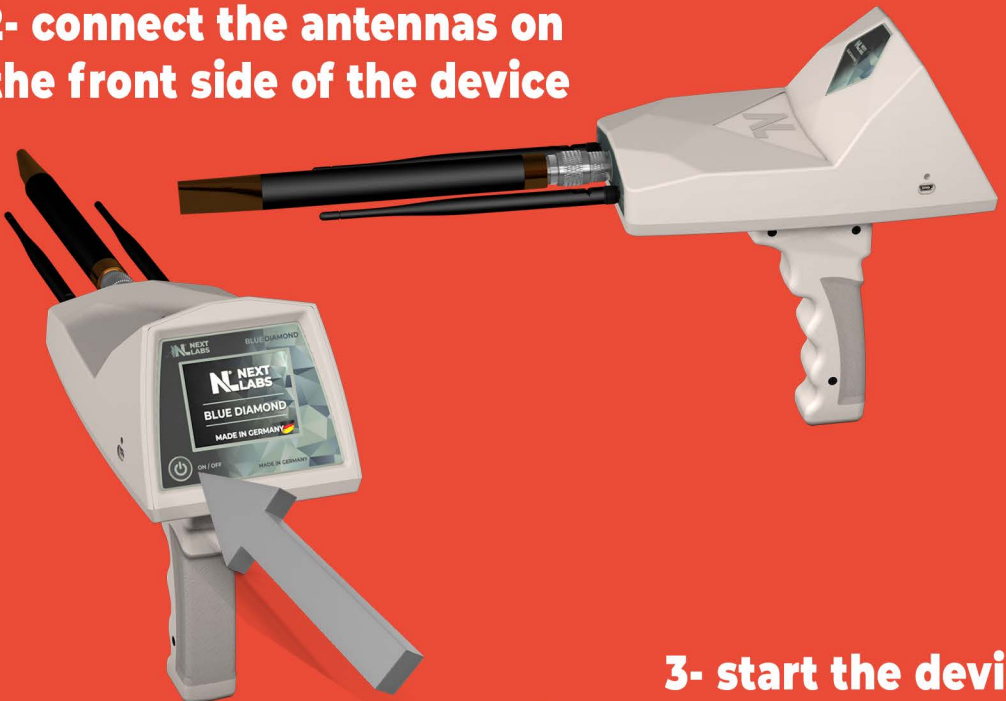


# Assembly steps

**1- Connect the handle of the device as in the photo and make sure its locked correctly**



**2- connect the antennas on the front side of the device**



**3- start the device  
pressing the on/off button under the scr**



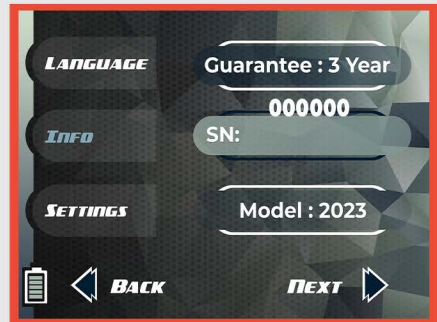
# Operating steps:



**1- The device will automatically start and transfer you to the main page.**

**The main page contains 3 option languages and info and settings**

**2- by pressing info, the device will display the information of the device such as serial number and manufacturing year and guaranty buried**



**3- The sitting option will allow you to change the sound and brightness level according to your needs**



# Operating steps:



**4- language option will transfer you to the device languages which is you can select the language you want the device to operate in**

**5- After selecting the language search type menu will appear on the screen to select the target you want search for it**

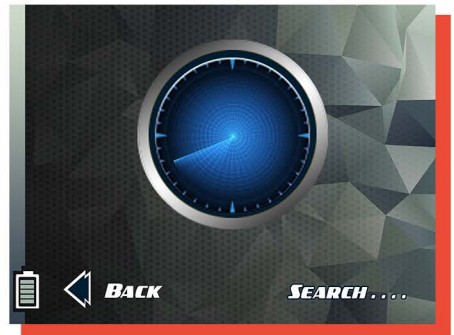
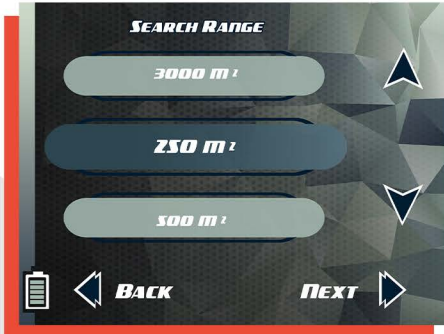
**6- After selecting target type front range will appear on the screen to select the range you want to cover in your search**



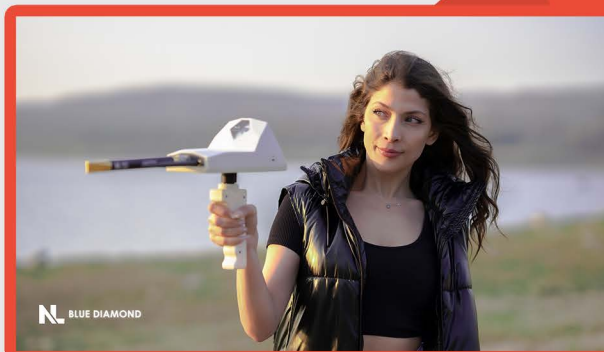


# Operating steps:

**7-After selecting the front range, the search page will appear on the screen  
Now the device is ready for your search**



**7- To get most accurate results hold the device by lifting it up to 90 degrees in the same way as in the following photo**



# Operating steps:

**10- Move directly without shaking the device and the device will guide you throw the target location if exist in the area you are in**

**11- When the device is above the target The device will star spinning alerting you that a target has been detect it**

**12- And if the device turns back this means the target exist behind you and you should turn and start walking**

A woman with long dark hair, wearing a black puffer vest over a black crop top and blue jeans, stands on a sandy beach. She is holding a white drone in her right hand. The background features a sunset over a body of water with mountains in the distance. The sky is a mix of orange, pink, and blue. There are decorative geometric shapes: a red triangle on the left and a teal triangle on the right.

**BLUE DIAMOND**

# Parts and accessories:

## Device main unite



## SP antenna



## Device grip



## 2 lithium-ion battery



## 2 recipient antennas



## Compass



## car & home chargers



**Note:**

Guarantee includes all technical issues

Batteries are not under guarantee

The device breakdown due to user  
cause its not included in the guarantee.

For further information please do not hesitate  
to contact our support team to assist you,  
also please check our website from more  
videos and visual instruction

The logo for Next Labs, featuring a stylized 'N' followed by the words 'NEXT LABS' in a bold, sans-serif font. The logo is white and is positioned on a red, angular background element.

**N NEXT  
LABS**





# Get In Touch

**P :** +491788202552

**E :** [nextlab.detectors@gmail.com](mailto:nextlab.detectors@gmail.com)

**W :** [nextlabsdetectors.com](http://nextlabsdetectors.com)