



JODI



ORIENT  
EXPRESS

## ORIENT EXPRESS

*Feeding into our fantasy of exploring the mystical east, The Orient Express is inspired by the ancient cultures of China and Japan.*

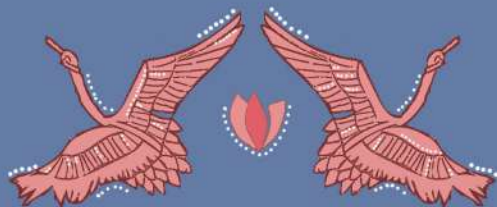
*Geographically placed close to each other, it is clear the influence each of these cultures have had on the other. Their shared history is what intrigued us.*

*From the discovery of paper and silk to the monarchies that rules these civilisations - it is interesting to see how this part of the world has remained in some ways untouched. As much as they have moved forward, they are rooted in century old traditions.*

*Our collection is a flurry of prints representative of them. Motifs that hold symbolic importance - the swan, the octopus and the dragon print. The florals we have developed this season are derived from the breathtaking views one sees in both countries, especially in spring.*

*All our prints are hand block printed on soft Indian cotton and cotton silk. Find a quirky mix of kimono jackets, wraps and lots of dresses, dresses, dresses - all PERFECT FOR SPRING.*

*mata-ne!*





OR29



OR28





OR 21







OR 20







OR25



OR26





OR23







OR35





OR34





OR22







OR17







OR18



OR16





OR 9











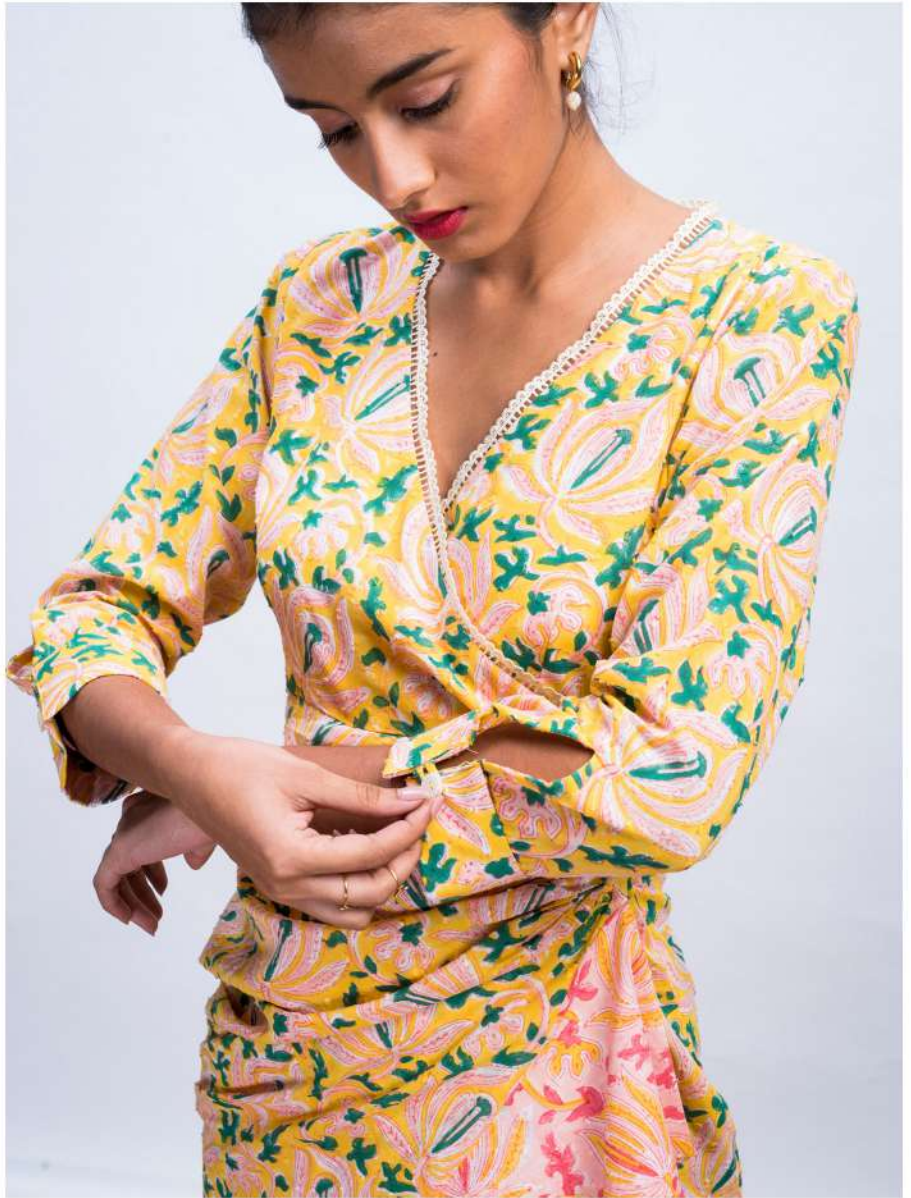
OR3





OR5





OR1



OR1p



OR12









OR6



OR10







OR 32



OR 33







OR13p



OR13





OR 19



OR 14







OR 14p







OR4



OR 31





OR 8







OR 15





OR 7



OR 6p



OR 24





OR 11





OR30



OR2





OR27





<b>OR1</b>	Nara kurta set
<b>OR2</b>	Nara shirt
<b>OR3</b>	Asagi panelled dress
<b>OR4</b>	Momo nightsuit
<b>OR5</b>	Nara draped dress
<b>OR6</b>	Doragon blazer
<b>OR6p</b>	Doragon trousers
<b>OR7</b>	Izushi ruffles top
<b>OR8</b>	Doragon kimono
<b>OR9</b>	Izushi slit dress
<b>OR11</b>	Monku tiered dress
<b>OR14</b>	Nori take kurta set
<b>OR15</b>	Nori take wrap dress
<b>OR19</b>	Ruby woo day dress
<b>OR20</b>	Ruby woo cut out dress
<b>OR21</b>	Ruby woo shift dress
<b>OR24</b>	Ume peasant dress
<b>OR31</b>	Nikko bomber jacket
<b>OR32</b>	Nikko tie up dress
<b>OR33</b>	Nikko day dress
<b>OR10</b>	White Origami Ruffled Dress
<b>OR12</b>	Tobe Tie up Tiered Dress
<b>OR13</b>	Tobe Panelled Kurta Set
<b>OR16</b>	Midori Wrap Dress
<b>OR17</b>	Midori Ruffled Dress
<b>OR18</b>	Midori Midi Dress
<b>OR22</b>	Fuji Slit Dress
<b>OR23</b>	Akane Wrap Dress
<b>OR29</b>	Tako Tiered Dress
<b>OR28</b>	Tako Shift Dress
<b>OR30</b>	Tako Shirt
<b>OR35</b>	Hokkaido Peasant Dress
<b>OR34</b>	Hokkaido Day Dress
<b>OR25</b>	Sakura peasant Dress
<b>OR26</b>	Sakura Ruffled Mini Dress
<b>OR27</b>	Sakura Shirt





# credits

PHOTOGRAPHER    **MANASI SAWANT**  
MODEL              **SHERYL BENNETT**  
MAKEUP ARTIST    **BHAGYASHREE VAID**

