



A LIFE IN ART





A LIFE IN ART

Art is a language. In its truest sense unique to each artist. We are so lucky that we are surrounded by a treasure trove of art and crafts. Every region in India has its distinct art form, that dates back to centuries ago.

Everything we do at JODI is inspired by the various forms of art and craft we've encountered along the way. Art is not just a part of our lives; it's the very heart that beats within us. Each piece we create is a testament to this love affair, where garments become canvases and stories are etched into fabric. It's truly wearable art.

We bring to you, our newest collection 'A Life in Art' inspired by Indian art forms like Sohrai and Gond, our pieces feature unique prints and delicate appliqué work. Crafted from handwoven fabrics, it's our take on art, with original JODI prints. As for us, fashion isn't just about what you wear; it's about the stories you carry with you - stories of art, of craft, and of a world waiting to be explored.



LA01



LA02





LA03



LA04



LA09



LA12



LA14



LA18



LA19





LA24





LA25



LA26



LA27



LA28B

LA28A



LA28C



LA29



LA30



LA32B



LA32A



LA37



LA38A



LA38B



LA39



LA39B



LA39A



LA41



LA41A

Muses : Shweta Dolli & Shania Lobo
Photographer : Neha Chandrakant





LA51

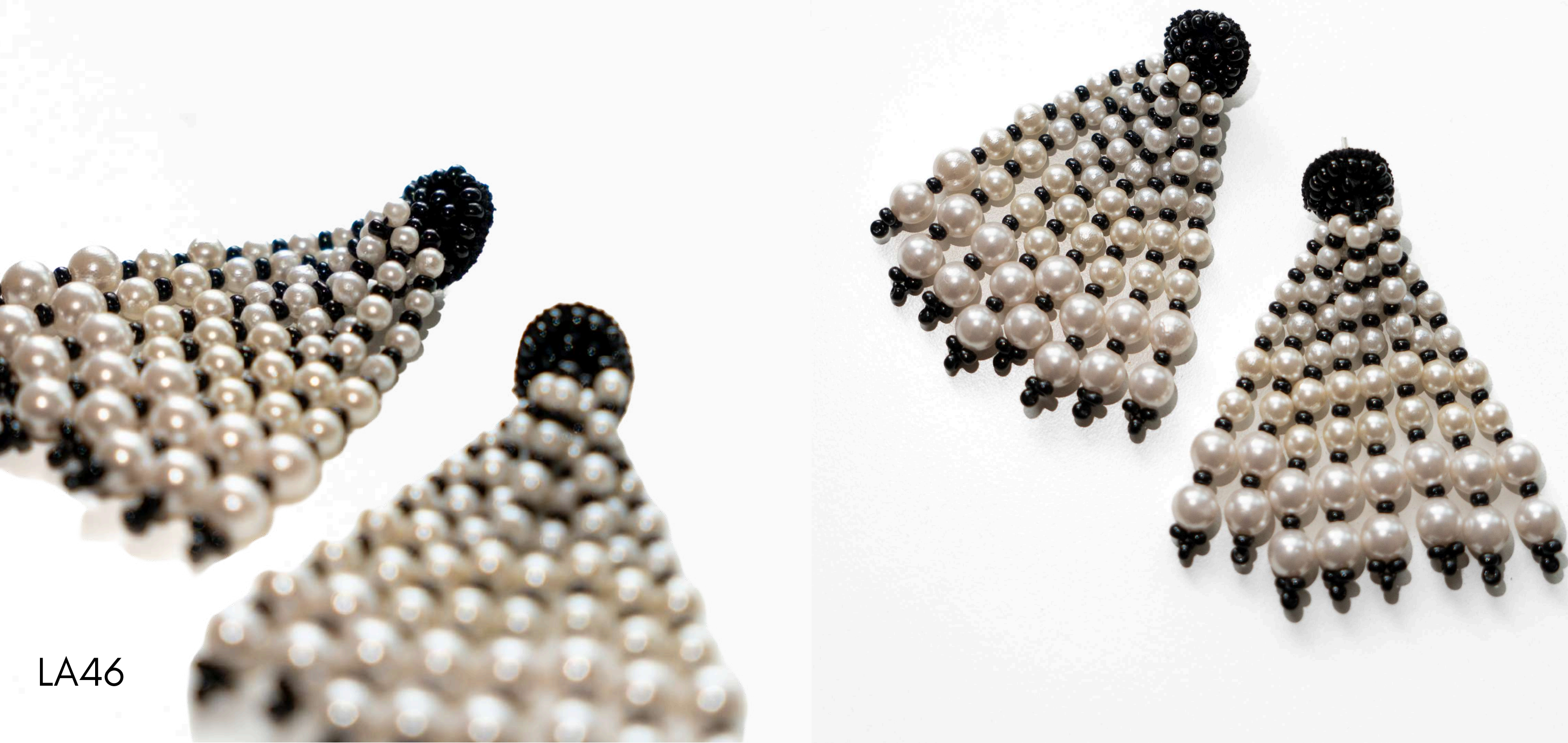




LA50



LA47



LA46





LA43





LA62



LA60



LA61



LA58



LA55



LA59





LA56



LA57



LA45



LA45



LA54



LA53



LA52

LA01 - Gond Day Dress
LA02 - Kolam Handloom Mini Dress
LA03 - Tulika One Shoulder Dress
LA04 - Cheriya Handloom Dress
LA09 - Sohrai Dress
LA12 - Kolam Handloom Dress
LA14 - Hasan Handloom Dress
LA18 - Cheriya Handloom Mini Dress
LA19 - Tulika Mini Dress
LA24 - Gond Dress
LA25 - Tulika Peasant Dress
LA26 - Sohrai One Shoulder Dress
LA27 - Hasan Wrap Shirt
LA28A - Sohrai Bralette
LA28A - Sohrai Bralette
LA28B - Sohrai Draped Skirt
LA28C - Sohrai Shorts
LA29 - Sohrai Shirt Dress
LA30 - Pipli Blazer
LA32A - Tulika Blouse
LA32B - Tulika Trousers
LA37 - Cheriya Handloom Shirt
LA38A - Kolam Handloom Shirt
LA38B - Kolam Handloom Trousers

LA39A - Gond Shirt
LA39B - Gond Trousers
LA41A - Meso Bib
LA41B - Meso Shirt
LA42 - Gond Brooch
LA43 - Pipli Brooch
LA44 - Gul Silk Corsage
LA45 - Cheriya Hat
LA46 - Meso Earrings
LA47 - Sohrai Earrings
LA49 - Cheriya Earring
LA50 - Tulika Earring
LA51 - Kolam Earring
LA52 - Pipli Bag
LA53 - Mandana Bag
LA54 - Aipan Bag
LA55 - Kolam scrunchie
LA56 - Tulika tie-up scrunchie
LA57 - Sohrai tie-up scrunchie
LA58 - Neelkamal beaded scrunchie
LA59 - Aipan scrunchie
LA60 - Mandana scrunchie
LA61 - Bhil beaded scrunchie
LA62 - Bhil scrunchie