

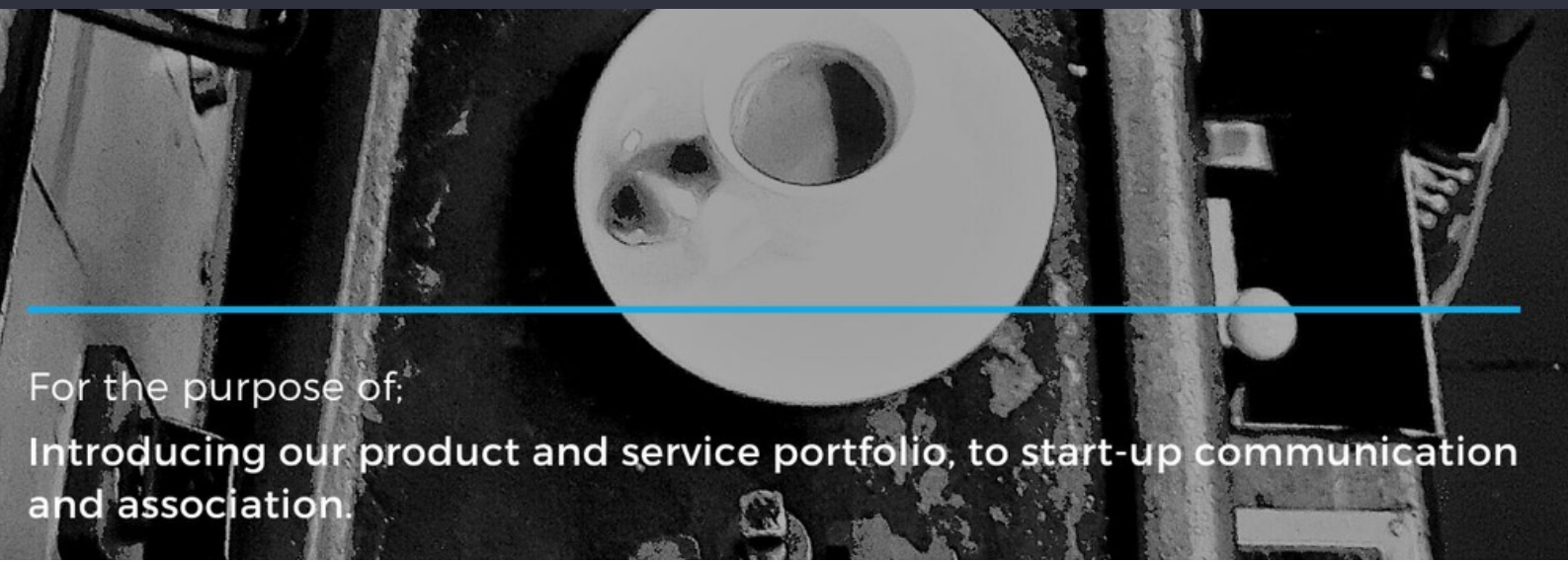


the knock drawer co.

A company who manufacture & innovate accessories for the coffee industry

Inventor of the Triangular Knock Bar

Proudly Irish



For the purpose of;
Introducing our product and service portfolio, to start-up communication
and association.

PRODUCT PORTFOLIO TABLE OF CONTENTS

Commercial drawers	3 - 5
Domestic drawers	6 - 8
Floor Tower	9 - 10
Pitcher Rinser	11 - 12
Chute	13 - 14
Puck Box	15
Tamper Stand	16
Customisation	17
Who we are	18



The Commercial Range



Enhance your reputation with the “best built coffee knock drawers in the coffee industry.”*

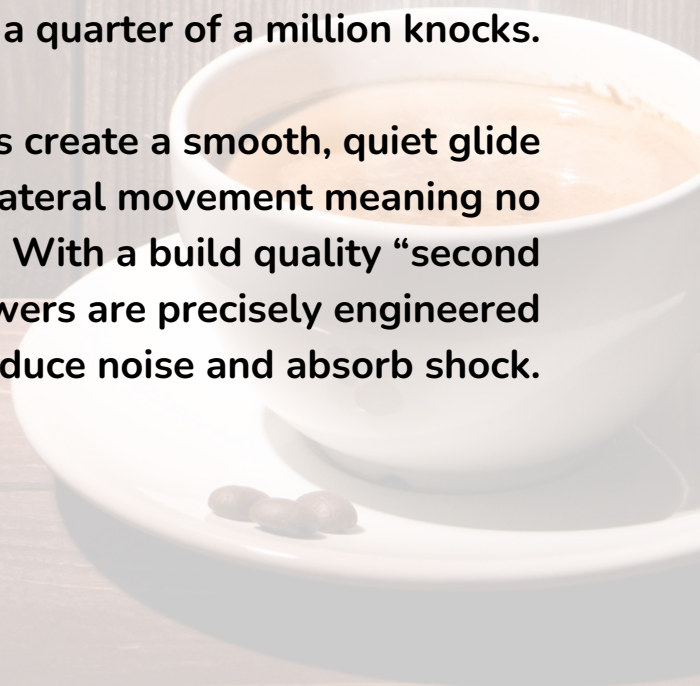
The Grounds Control is our premium solution for professional baristas while our Grounds Breaker models are our best sellers.

Made from either 1.5mm or 1.2mm stainless steel to support all professional grinders like Mahlkonig, Nuova Simonelli, Mazzer, Compak or La Cimbali our drawers hold their ground under pressure.



Our iconic Triangular Knock Bar effectively removes the coffee puck with minimal effort & minimal noise. It cannot be broken or lost & can withstand up to a quarter of a million knocks.

CNC machined rails create a smooth, quiet glide while eliminating lateral movement meaning no rattling or clunking. With a build quality “second to none,”** these drawers are precisely engineered to reduce noise and absorb shock.



*review by SCA Irish chapter

**review by BlueStarCoffee



The Grounds Control



1.5mm stainless steel
to support the
heaviest grinders

Large capacity for the
busiest baristas



Embedded
anti-slip rubber
feet for noise &
shock
absorption

Easy-grab
walnut or nylon
handle

CNC machined nylon
runners for smooth &
quiet operation

Triangular Knock
Bar & heavy duty
brackets

Models:

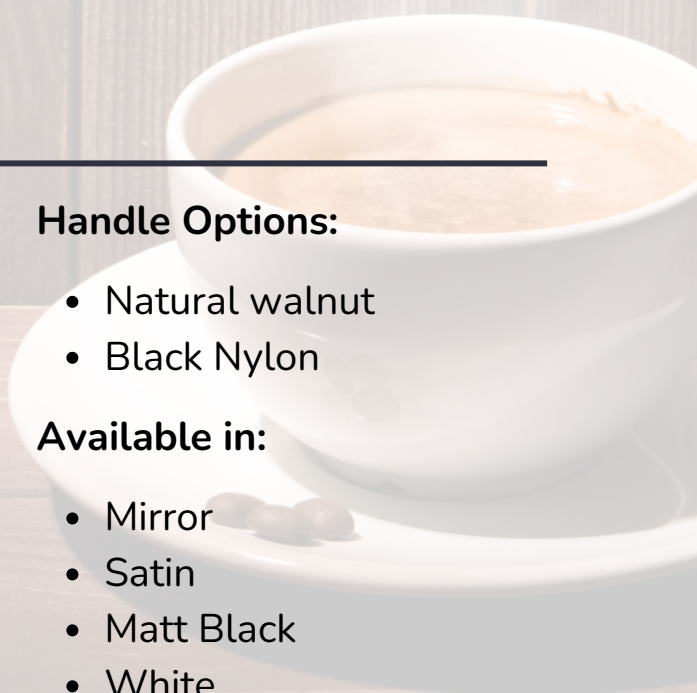
- GC1 - 280 x 370 x 100mm
- GC2 - 365 x 300 x 100mm
- GC3 - 320 x 450 x 100mm
- GC5 - 210 x 300 x 80mm

Handle Options:

- Natural walnut
- Black Nylon

Available in:

- Mirror
- Satin
- Matt Black
- White



The Grounds Breaker



1.2mm stainless steel to support the heaviest grinders

Large capacity for the busiest baristas

Bar bracket & rivets keep the knock bar in place

Embedded anti-slip rubber feet

Incorporated handle for a minimalist design

The Coffee Knock Drawer Company's iconic Triangular Knock Bar

CNC machined nylon runners for smooth & quiet operation

Models:

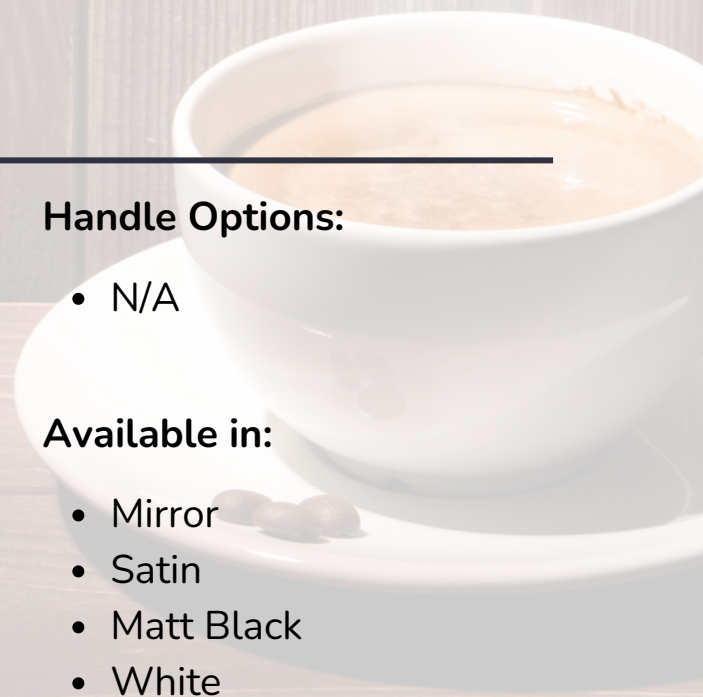
- GB1 - 215 x 360 x 85mm
- GB2 - 265 x 370 x 85mm
- GB3 - 280 x 370 x 85mm
- GB5 - 210 x 300 x 80mm

Handle Options:

- N/A

Available in:

- Mirror
- Satin
- Matt Black
- White



The Domestic Range

With our domestic range of knock drawers made from 1.2mm stainless steel & often described as “indestructible” your enthusiastic coffee costumers will be able to brew like a pro.



Explore our stylish Grounds Cub models, featuring the convenience of an integrated handle, or discover our best selling Pro Cub collection. The Pro Cub range offers a choice of either a warm walnut handle or a sleek professional nylon handle.



Designed & crafted by us, in Ireland, we are the only manufacturer to incorporate our signature triangular knock bar. This unique feature cannot be broken or lost & will not need replacing during the lifetime of the drawer.

Our compact drawers are available in various sizes and are designed to conveniently fit beneath all domestic grinders. They maximize valuable counter space & reduce mess.

Nylon runners ensure smooth and silent gliding when opening and closing while strategically placed perforations facilitate steam release, preventing moisture build-up inside the drawer. These drawers are the perfect balance between precision engineering & style.



The Pro Cub



1.2mm stainless steel to support the heaviest home-use grinders

Under grinder coffee waste solution saves valuable counter space

Bar bracket & rivets keep the knock bar in place

Embedded anti-slip rubber feet for noise & shock absorption

Walnut or Nylon handle

The Coffee Knock Drawer Company's iconic indestructible Triangular Knock Bar

Nylon runners for smooth & quiet operation

Models:

- PC1 - 200 x 300 x 55mm
- PC2 - 140 x 240 x 55mm

Handle Options:

- Natural walnut
- Black Nylon

Available in:

- Mirror
- Satin
- Matt Black
- White



The Grounds Cub

1.2mm stainless steel to support the heaviest home-use grinders

Under grinder coffee waste solution saves valuable counter space

Bar bracket & rivets keep the knock bar in place

Embedded anti-slip rubber feet for noise & shock absorption

Incorporated handle

Nylon runners for smooth & quiet operation

The Coffee Knock Drawer Company's iconic indestructible Triangular Knock Bar

Models:

- GC4 - 200 x 300 x 55mm
- GC4M2 - 160 x 240 x 55
- GC4EM - 140 x 240 x 55

Handle Options:

- N/A

Available in:

- Mirror
- Satin
- Matt Black
- White



The G-Raff Floor Tower

Commercial

Our near indestructible triangular bar & engineered brackets

Rubber edge protector to protect the portafilter

Convenient cloth ring

1.2mm engineered, removable, stainless steel top

Virtually unbreakable 6.2mm HDPE plastic

Sleek, ergonomic design

Removable stainless steel base

Embedded, anti-slip rubber feet

Available in black



845mm

202mm





The knock bar
cannot be lost



The top is easily
removable



Reduced noise,
increased stability



Cloth ring
included

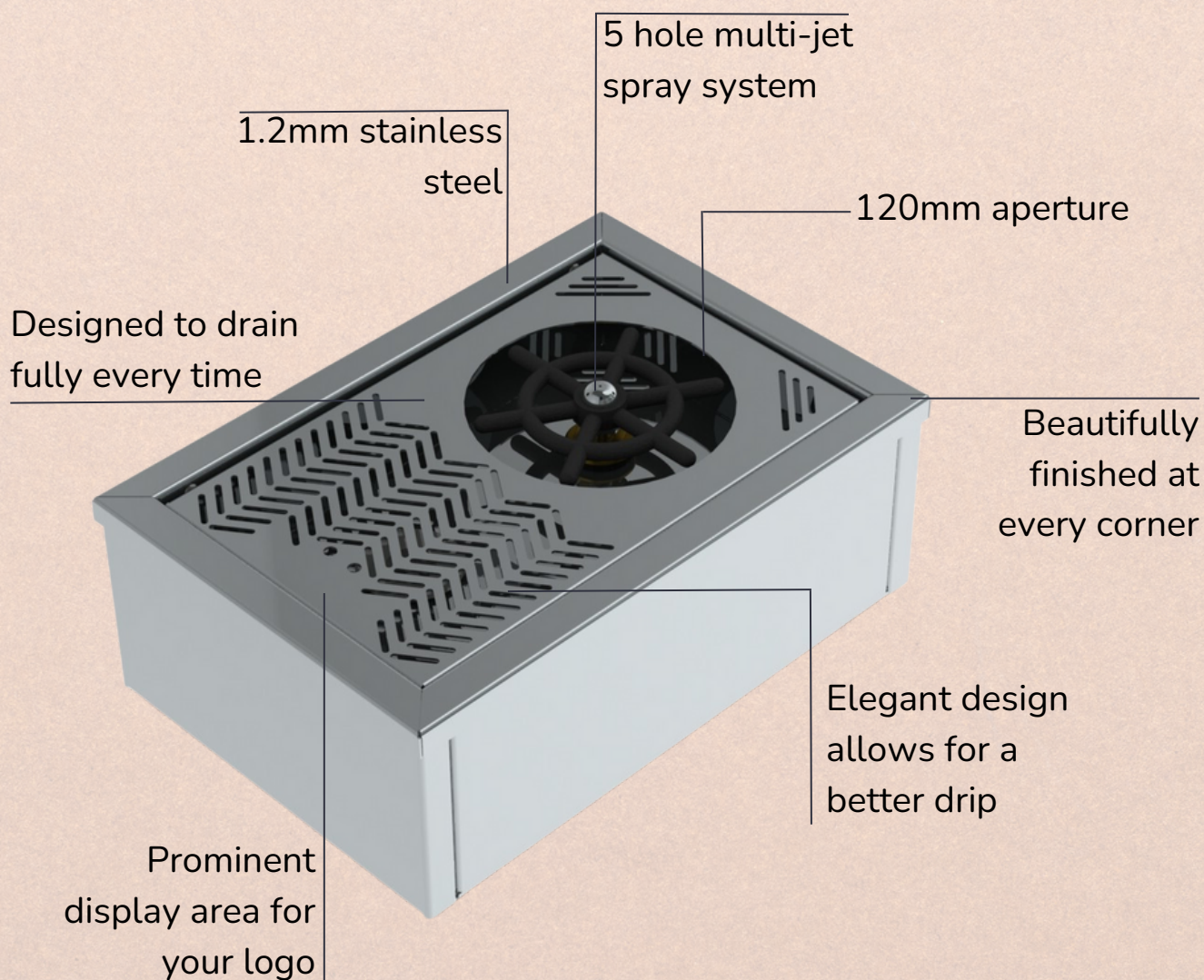


Removable base for
bottom emptying
(recommended for
compostable bags)



Convenient grip
holds for
effortless lifting





Models:

Countertop:

- PR1 - 205 x 205 x 115mm
- PR2 - 205 x 305 x 115mm

Inset:

- PR1 - 205 x 205mm
- PR2 - 205 x 305mm
- PR3 - 205 x 605mm

Model Options:

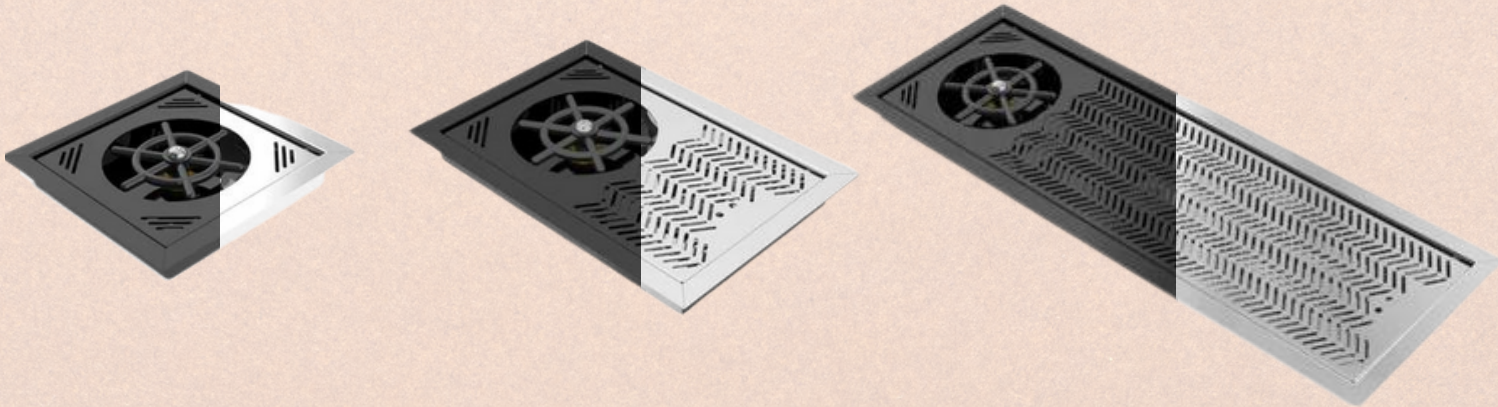
- Countertop
- Inset

Available in:

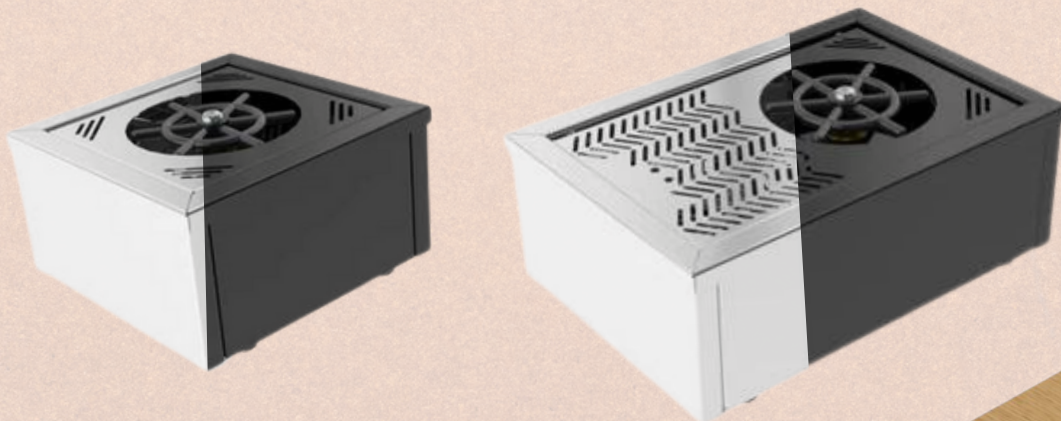
- Mirror
- Satin
- Matt Black
- White



Inset Models:



Countertop Models:



Mounting Clips



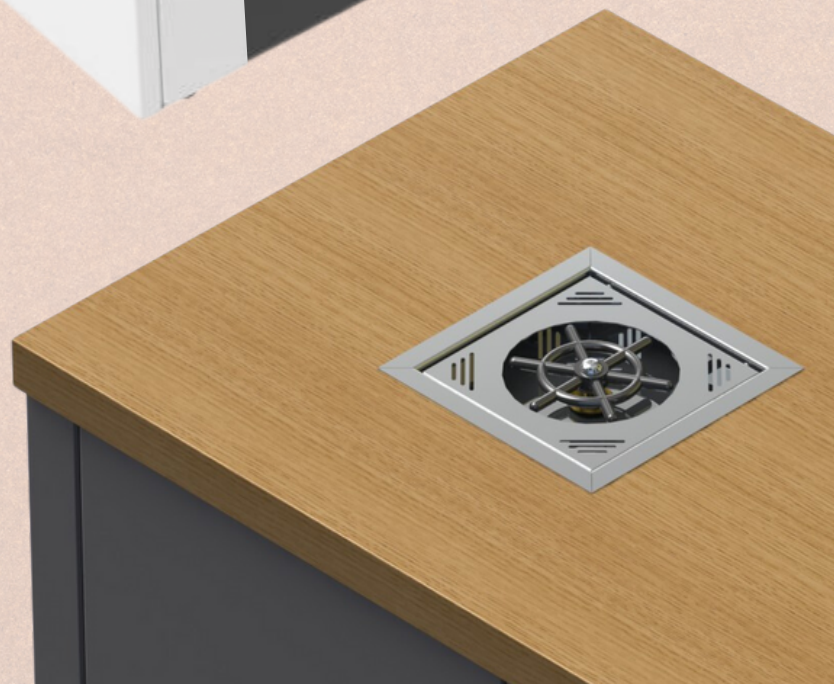
Angled Waste Fitting



Drain Hose



10 mm Inlet Hose



Designed with convenience in mind these pitcher rinsers come in 3 different sizes to accommodate any size work bench.

Opt for a classic inset version for a sleek, flush finish or choose a counter-top version to avoid cutting holes. For easy installation, the drain hose, inlet hose and mounting clips are included.

With 1.2mm Stainless Steel and a virtually unbreakable rinsers disk with a multi-jet spray system, the Pitcher Rinser is made to withstand the busiest environments while improving the work flow.



1.2mm stainless steel

Stainless steel flange sits flush with the counter-top

Prominent logo display area

A variety of finishes available

Rubber gasket to reduce noise

Open base to allow coffee waste to fall into a hidden bin below

The Triangular Knock Bar helps to reduce noise & increase the lifetime of your chute

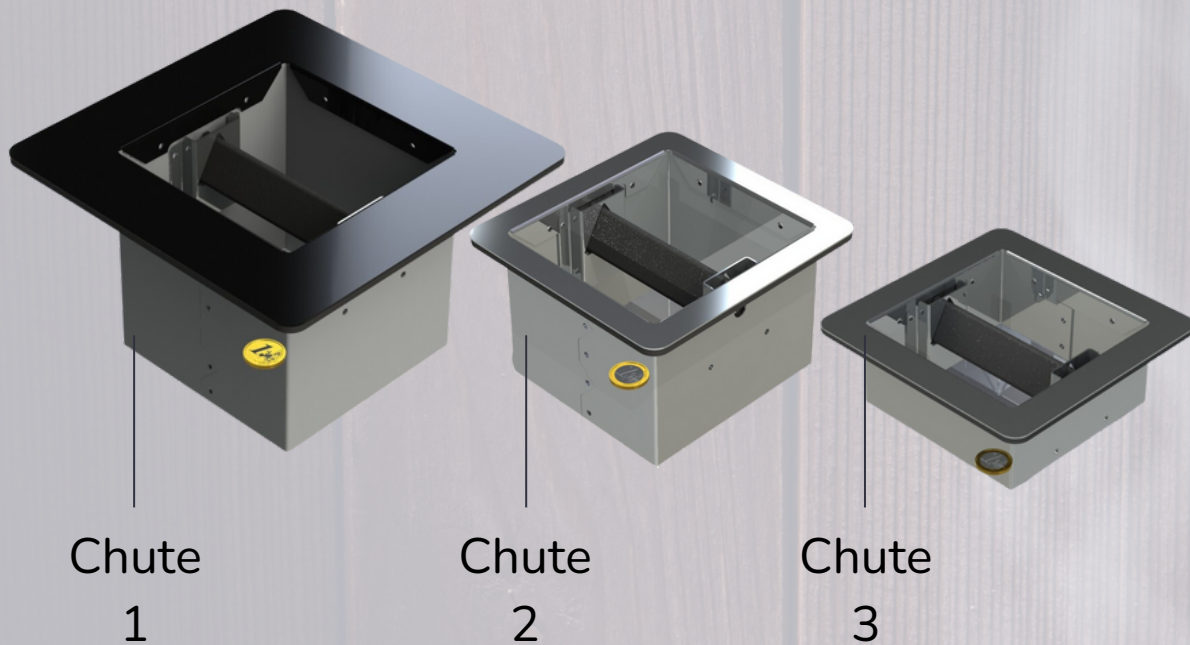
Models:

- CH1 - 245 x 245 x 152mm
- CH2 - 140 x 150 x 110mm
- CH3 - 140 x 140 x 65mm

Available in:

- Satin
- Matt Black





Our Knock Chutes are made to sit flush with your counter-top for a seamless, integrated look. Our signature triangular knock bar effortlessly removes the coffee puck from the portafilter, allowing it to fall into a hidden under-counter bin below.

Our indestructible knock bar can withstand up to a quarter of a million knocks before needing to be turned or replaced.

Excess shock absorption & noise reduction reduce barista fatigue and improve the work environment & flow.

Choose from 3 different sizes and opt to have your logo laser engraved onto the flange. These chutes are most popular in a Satin or Matt Black finish.



Stainless steel brackets keep the bar in place

Our iconic triangular knock bar

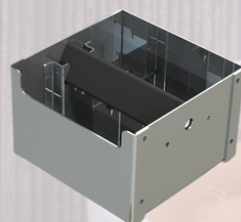
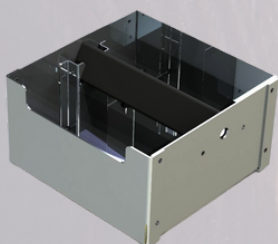
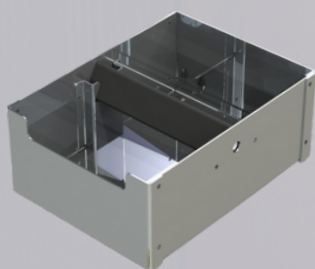
1.2mm stainless steel

A variety of finishes available

Prominent logo display area

Anti-slip embedded rubber feet absorb shock & reduced noise

Beautifully designed & crafted



Models:

- PB1 - 165 x 225 x 95mm
- PB2 - 165 x 165 x 95mm
- PB3 - 140 x 140 x 95mm

Available in:

- Satin
- Mirror
- Matt Black
- White





Made with the same stainless steel as our near-indestructible knock-out drawers, this beautifully tough Tamping Station will subtly enhance any coffee set-up whether at home or in the café.

With its clean lines, elegant design & minimalist feel, this simple stand will compliment the barista bar.

It has a rubber pad to protect the portafilter, space for a tamper and anti-slip rubber feet underneath.

Size:

- 85 x 90 x 67mm

Available in:

- Mirror
- Matt Black
- White



Customisation

Colour:

- Custom colours available on request
- Minimum order requirement of 10



Design:

- Custom sizes & designs available on request
- Our inhouse design & engineering team will work closely with you to design a drawer that suits your needs
- Minimum order requirement of 50



Logo application:

- Laser engrave your logo across our range of drawers, pitcher rinsers, chutes, puck boxes & tamper stands



Who are The Knock Drawer Co

We are an Irish, family-owned and managed business dedicated to innovation, excellence, and perfection in the coffee industry through precision engineering.

We manufacture the very best coffee knock drawers and coffee accessories for the commercial & domestic markets

What began as an engineering company in 1989 became a thriving sheet metal manufacturing company.

In 1995, Terry & Maureen took on the significant role of being the main Irish representative for Gaggia Coffee Machine. They enjoyed many happy years in the coffee industry before selling the Coffee Machine business in 2007 in order to capitalize on their niche market of Coffee Knock Drawers.

After a recent re-brand in 2023 we are now known as The Knock Drawer Co.

All of our products are manufactured in-house using local raw materials and shipped from our purpose built facility in Dublin, Ireland.

With global partners extending to the far reaches of the earth you can find our drawers anywhere from Ireland to Australia and Japan.

We work with your core values at heart and accommodate micro businesses all the way up to multinational organisations with the support and dedication of decades of experience.

If I could show you a better quality drawer at a better price, would that interest you?

Who are The Knock Drawer Co



the knock drawer co.

The Knock Drawer Co.

Unit A5
Airton Business Park
Airton Road
Tallaght
D24 FN77

Phone: 00353 414 6892

Email: amy@theknockdrawerco.com

Web: theknockdrawerco.com

