

TRUST SUPER TUNING SYSTEM AIMING AT REAL COMPETITIONS.

# 600 WARNING METER

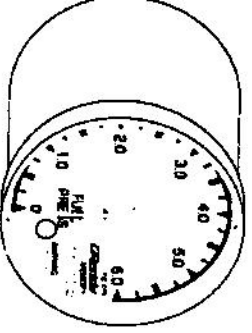


Instruction Manual

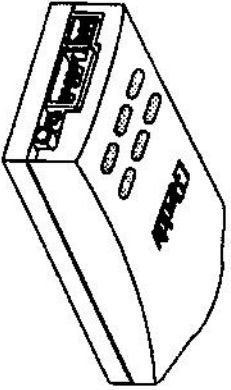
TRUST CO., LTD.

MADE IN JAPAN.

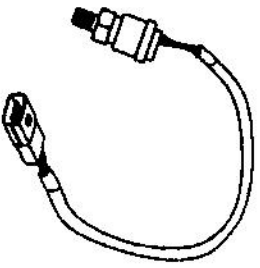
# Parts List:



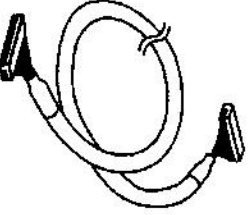
[1] Fuel Press Meter  
1pc.



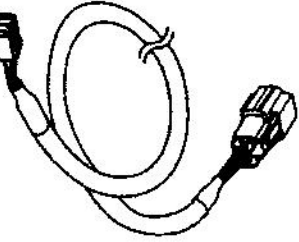
[2] Data Link Unit  
1pc.



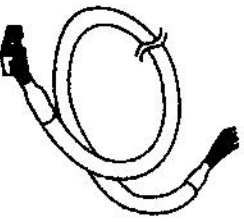
[3] Pressure Sensor  
1pc.



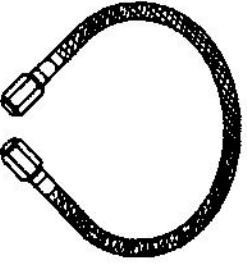
[4] Meter Harness 2m  
1pc.



[6] Sensor Harness 2.5m  
1pc.



[7] Electrical Harness 0.5m  
1pc.



[8] Braided Line 0.5m  
1pc.



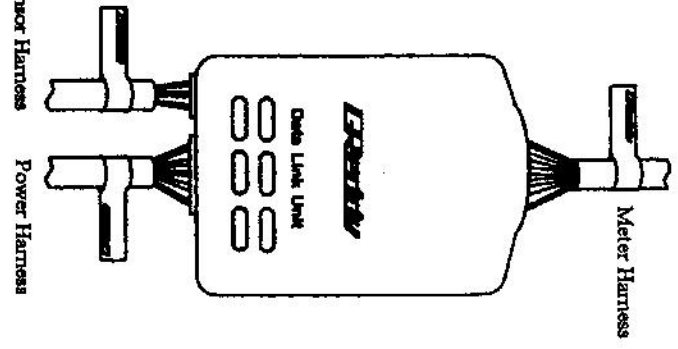
[5] Hose Fitting 1pc.

# Suggestions:

How to use the Harness Labels

If you are installing more than one warning meter, it is suggested to use the provided decal set to label each of the harness for each individual meter type.

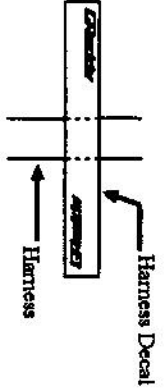
The decal set includes three labels: 1) Meter harness 2) Sensor Harness 3) Power Harness. Install as shown below.



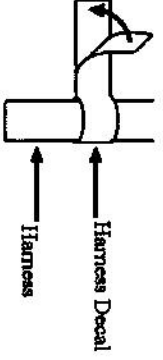
## How to apply:

Peel label off from the decal sheet

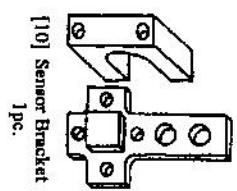
Apply as shown below



Fold the label onto the harness as shown below.



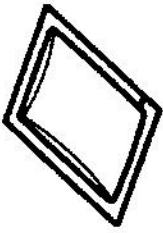
# Parts List:



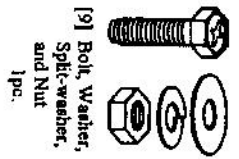
[10] Sensor Bracket  
1pc.



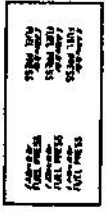
[13] Wire Tie (5cm)  
4pcs.



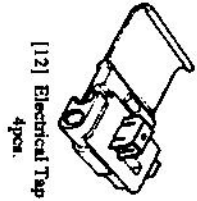
[11] Mounting Cleaner  
(for double-side tape)  
1pc.



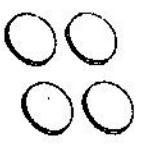
[9] Bolt, Washer,  
Split-washer,  
and Nut  
1pc.



[14] Harness Label Set  
1pc.



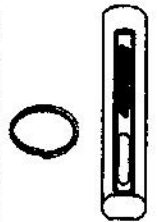
[12] Electrical Tap  
4pcs.



[15] Double-sided Tape  
1pc.



[16] Instruction Manual



[17] Warning Adjusting Socket Tool  
1pc.

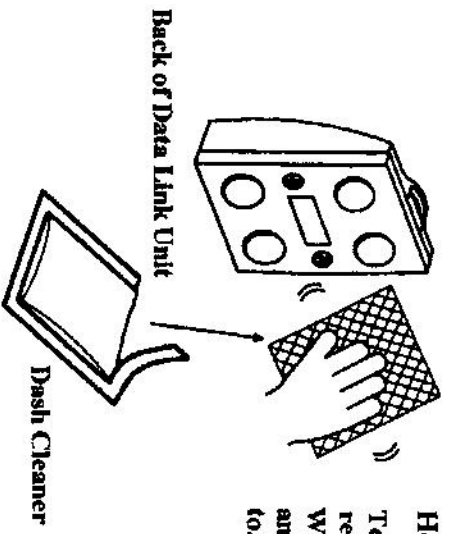
## Installation:

### Data Link Unit Mounting

When using the provided double-sided tape to mount the data link unit, clean the mounting surfaces with the provided dash cleaner

#### ⚠ Caution

- ⚠ Do not use the dash cleaner on any other products.
- ⚠ If there is dirt, dust, or oil on the mounting surface, the double-sided tape may not adhere to the dash.

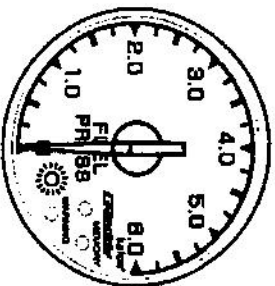


**How to use:**  
Tear the silver package open and remove the dash-cleaner. Wipe the back of the data link unit and the dash surface, to be mounted to.

## Operation:

### Check Mode

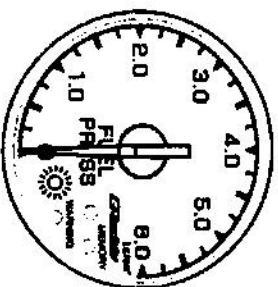
#### Bad Harness Connection Check Feature



When there is a bad sensor or ground connect the warning LED will flash quickly.  
(Flash, flash -- flash, flash -- flash, flash)

This feature does not check the connection on power harness.

#### Short Circuit Check Feature

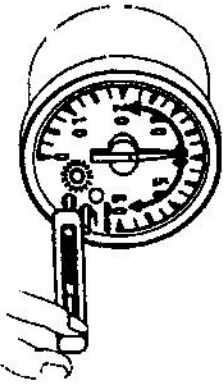


When there is a short circuit in the sensor or harness, the warning LED will flash slow.  
(Flash -- flash -- flash)

This feature does not check for short circuits on power harness.

# Operation:

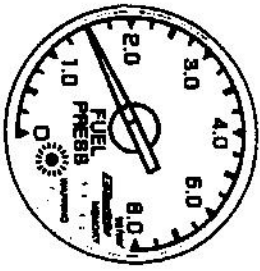
## Setting the Warning Point



To set the warning point, use the provided socket tool to turn the Adjust Knob to the desired warning value.

After making the adjustment, wait for 5 sec. and the meter will program the new setting and return to "Real-time Meter Mode".

## Warning Mode



When the needle of the meter reaches the programmed warning point, the "Warning LED" (and optional warning light and/or buzzer) will activate. This will remain until the needle rises above the warning point.

## Caution

- Do not adjust the Warning Point when Driving.
- Always remove the adjusting socket tool after making adjustments.

# Installation:

## Meter Mounting

### Important

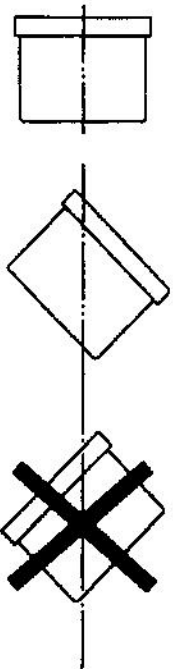
- When looking for a location to mount the meter, be sure not to have the meter interfere with the driver's view of the road or other important instruments.

### Note

Mounting brackets for these warning meters are available for simple installation.  
(GReddy Meter Band 369601 or GReddy Meter Holder 369602)

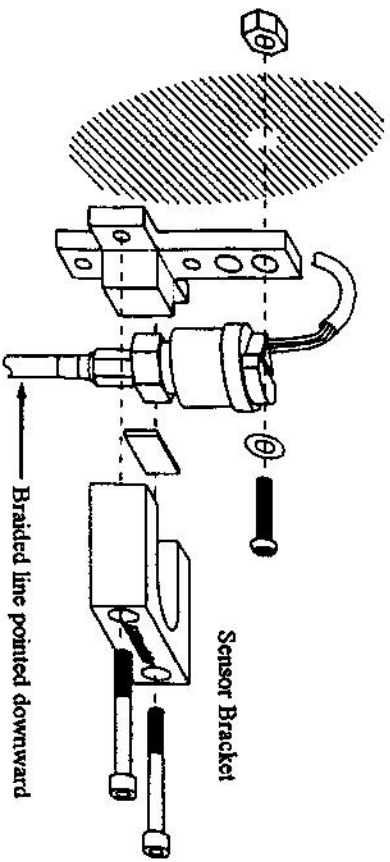
## Caution

- Never mount the meter facing downward. Always mount the meter horizontally or facing upward. Mounting the meter facing downward can the meter to malfunction.



# Installation:

## Sensor Mounting



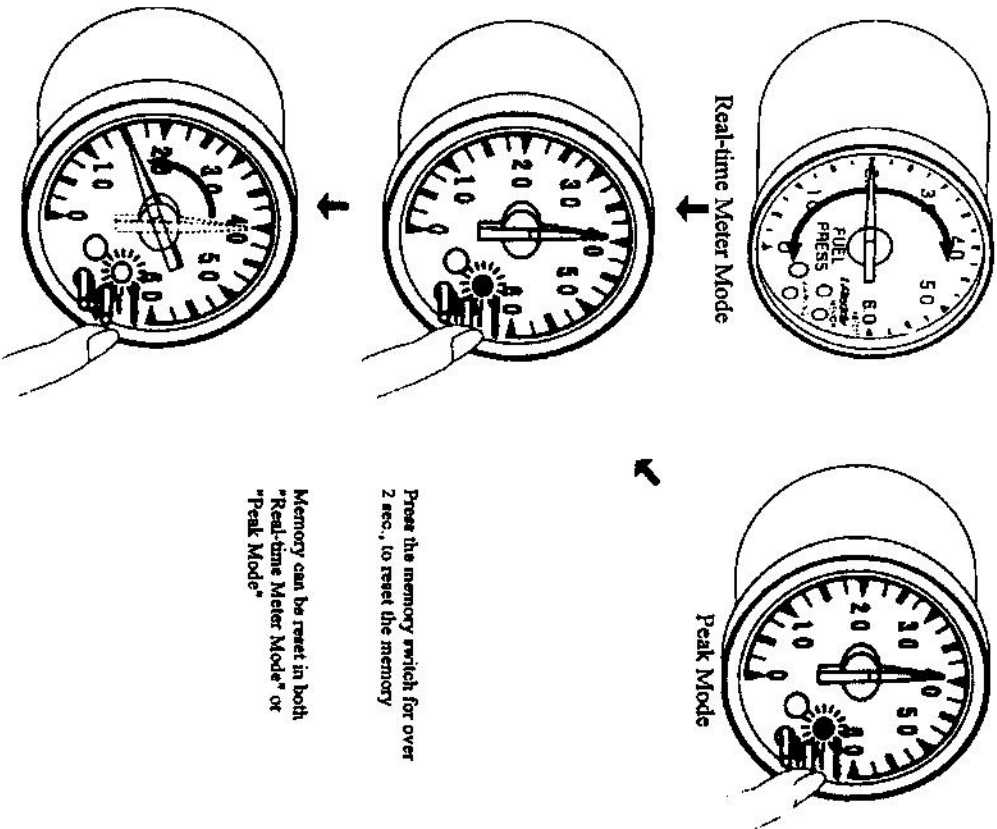
Find a good location to mount the sensor bracket. The location should be a place where it is cool and dry.

Mount the sensor to the bracket as shown above.

Always have the braided line pointing downward as shown above.

# Operation:

## Resetting the Memory

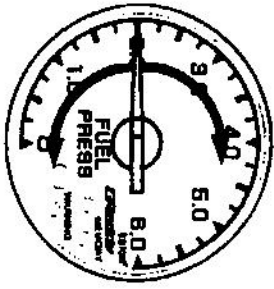


Press the memory switch for over 2 sec., to reset the memory

Memory can be reset in both "Real-time Meter Mode" or "Peak Mode"

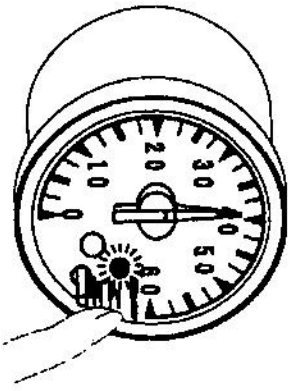
# Operation:

## Real-time Meter Mode:



Displays the fuel pressure reading.

## Peak Fuel Pressure Mode



Press memory switch momentarily to get into "peak mode"

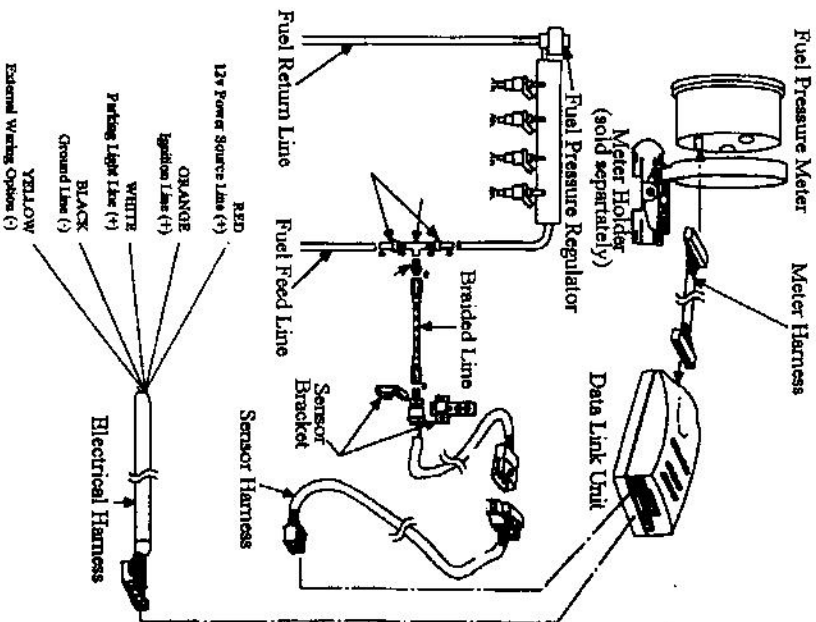
When "peak mode" is turned on, the memory LED will illuminate and the meter will display the peak temperature achieved.

Press the memory switch again, to return to "real-time mode"

# Installation:

**1** During installation, make sure to use the provided Teflon tape to prevent fuel leaks. Fuel leaks could cause fires and engine damage.

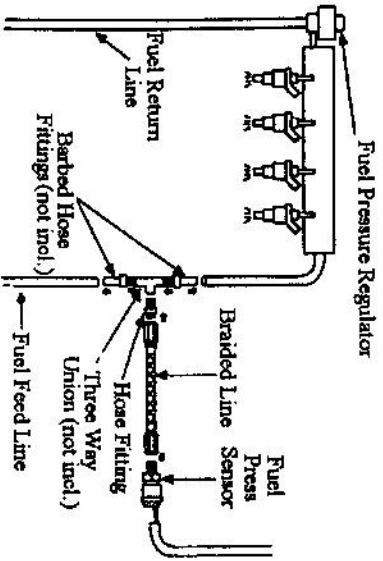
## Attention



## Installation:

### **⚠ Caution**

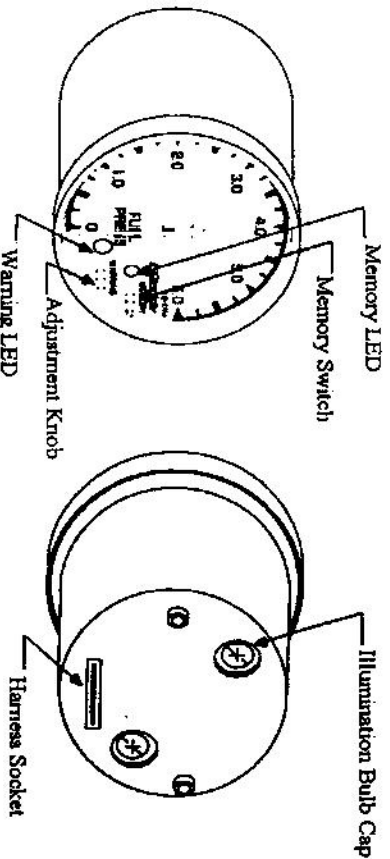
- ⚠ Avoid mounting the sensor in a location where the sensor could get wet or hot.
- ⚠ Make sure the sensor and the sensor harness is away from the ignition system. (i.e. Ignition coil box) Noise (signal) from the ignition system may cause the meter to display faulty readings.



### **Important**

Be sure to splice into the fuel feed line (before the fuel pressure regulator) to get an accurate pressure reading.  
Note: If you read the pressure after the fuel pressure regulator, the reading will be inaccurate.

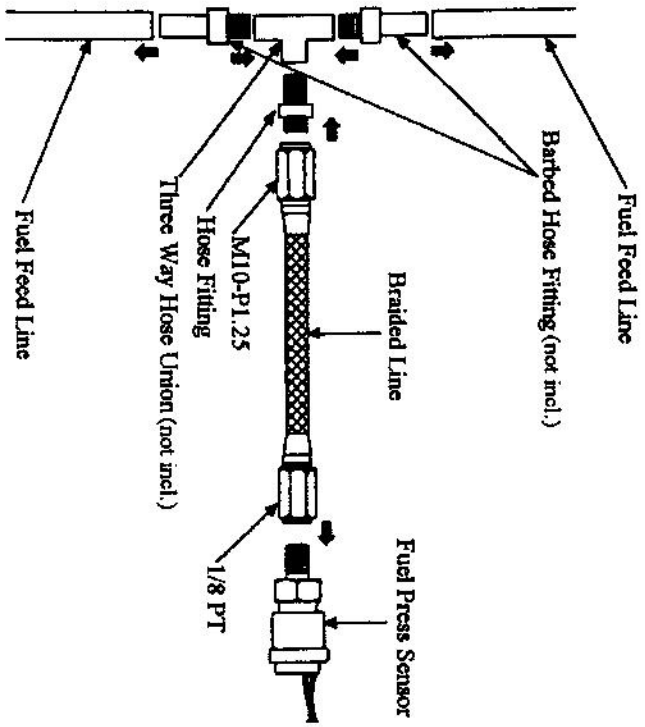
## Operation:



- **Memory Switch**
  - Used to switch to "Peak" mode
  - Used to reset the memory
- **Memory L.E.D.**
  - Illuminates
  - Flashes when resetting the memory
- **Adjustment Knob**
  - Used to adjust the warning point (setting)
- **Warning L.E.D.**
  - Illuminates when in the warning mode
  - Flashes when the harness is disconnected or when there is a "short" in the electrical system



## Installation:

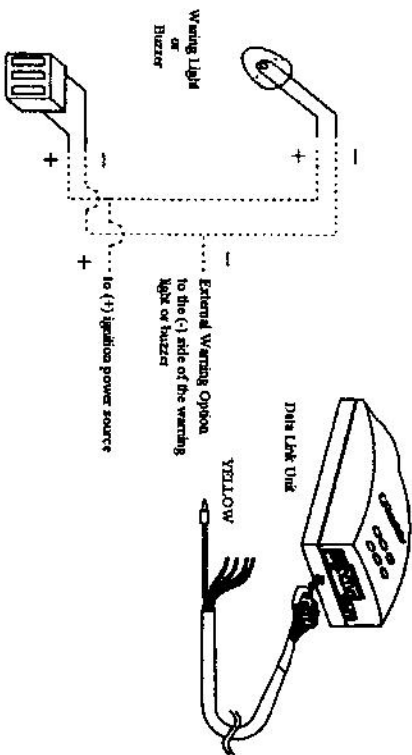


- Connect the braided line to the pressure sensor.
- The braided line has different ends; make sure the 1/8 PT end goes to the sensor and the MI0-P1.25 end goes to the hose fitting.
- Connect the braided line to the hose fitting.
- Mount the sensor using the provided bracket.
- It is ideal to mount the sensor so the wire end faces upward.

8.

## Installation:

External Warning Option Output



9.