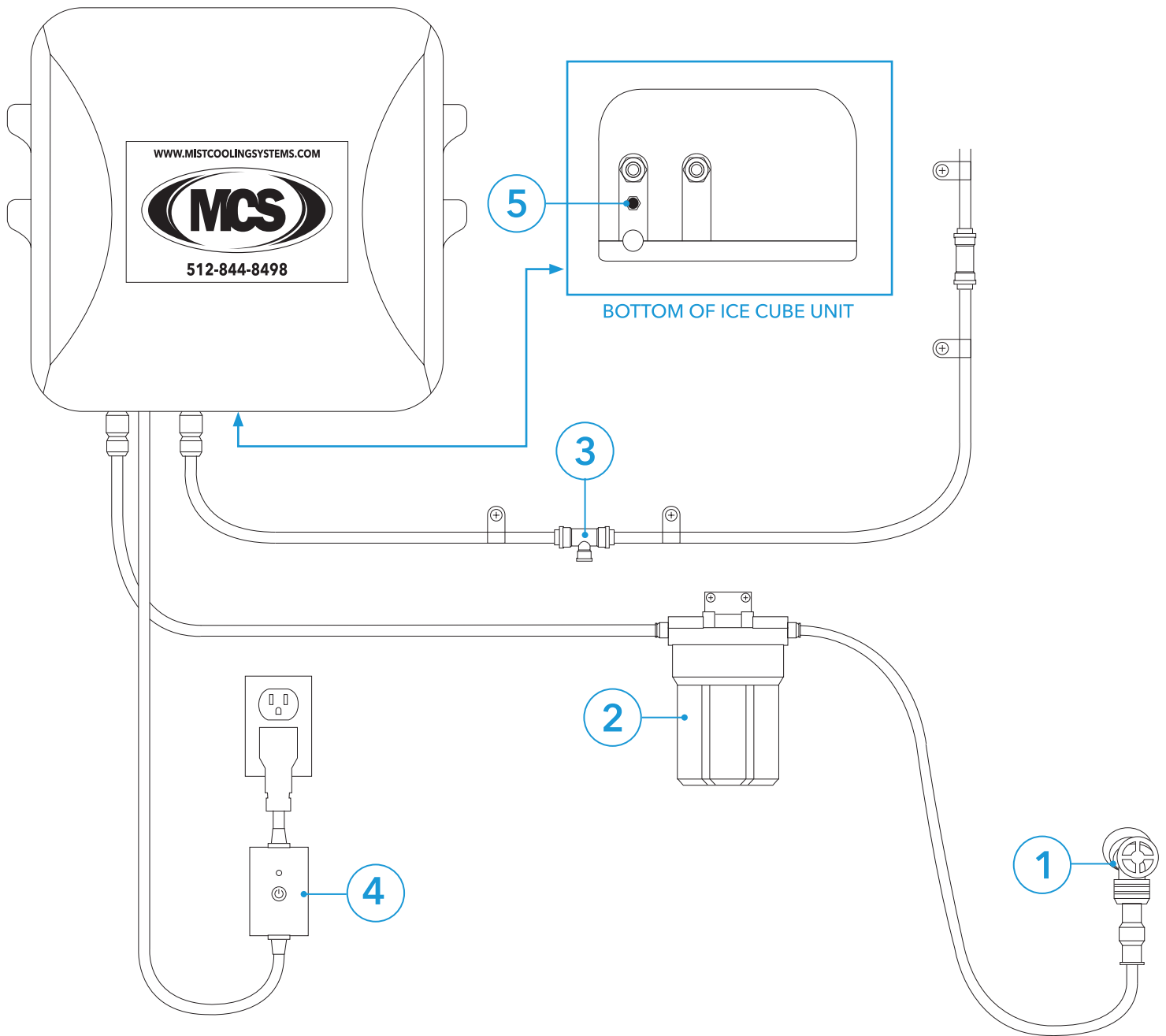


# ICE CUBE WINTERIZATION INSTRUCTIONS



## IMPORTANT

**READ THOROUGHLY AND SAVE THESE INSTRUCTIONS, AS THEY WILL NEED TO BE PERFORMED YEARLY. WINTERIZING YOUR SYSTEM IS VITAL AT THE END OF THE MISTING SEASON. FAILURE TO WINTERIZE YOUR SYSTEM WILL VOID THE WARRANTY.**



# ICE CUBE WINTERIZATION INSTRUCTIONS

- 1** Turn off the water supply to your misting system. Unscrew the hose bib adapter from your hose bib. Let any residual water drain from the hose, then cover it to prevent bugs and debris from entering the system during winter. A small sandwich-sized plastic bag held in place with tape, a rubber band, or a twist tie works well to cover the hose.
- 2** Unscrew the filter canister and pour out any remaining water. Remove and discard the filter element. Re-install the filter canister. **\*\*NOTE\*\* A new filter element must be installed before using the system and can be purchased at [www.mcs-products.com](http://www.mcs-products.com) under the Mist Cooling, Parts and Tubing category.**
- 3** Unscrew the auto drain nozzle from the tee. This should be installed close to the system. It is located on the high-pressure tubing on the output side of the system.
- 4** Turn on the Outdoor Wi-Fi Smart Plug. You can do this by pressing the power button on the smart plug. **\*\*NOTE\*\* Since the water supply is disconnected, your system should not run but may turn on briefly.**
- 5** Find the push button where the power cord enters your Ice Cube system. When pressed, it will bypass the low water safety switch, and the system will begin running. Press and hold the button for about 15 to 30 seconds. This should pump any residual water within the system out of the auto drain tee. Once the water has stopped spraying, release the button and the system should stop running. Turn off the Outdoor Wi-Fi Smart Plug.
- 6** Replace the auto drain nozzle you removed in step 3. The winterization of your Ice Cube is complete, but you must drain the water from your mist lines or misting fans. Continue reading for those instructions.

## MIST LINE WINTERIZATION

- 1** Unscrew several nozzles, especially nozzles at the lowest point of your mist line. Doing this will let residual water drain from the lines.
- 2** Once the water has stopped draining, re-install the nozzles.

## MISTING FAN WINTERIZATION

- 1** Unscrew the nozzles from your misting fan. Doing this will let residual water drain from the lines running to the fans.
- 2** Once the water has stopped draining, re-install the nozzles.