

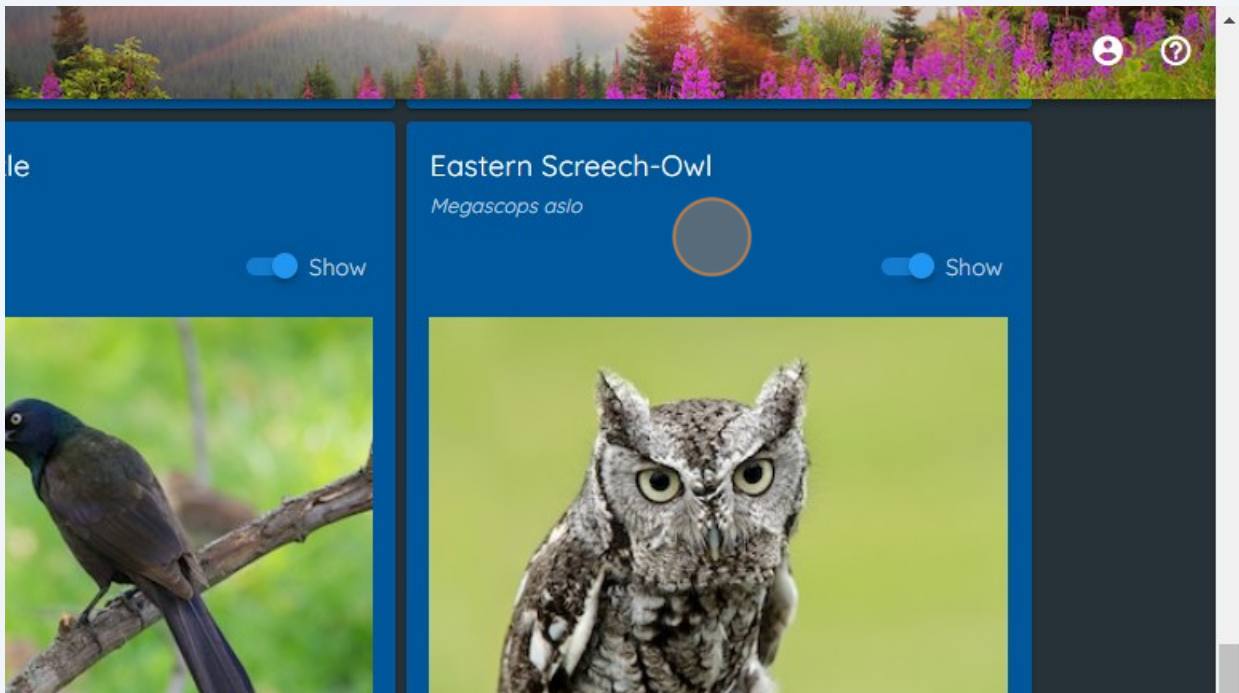
Label Sounds



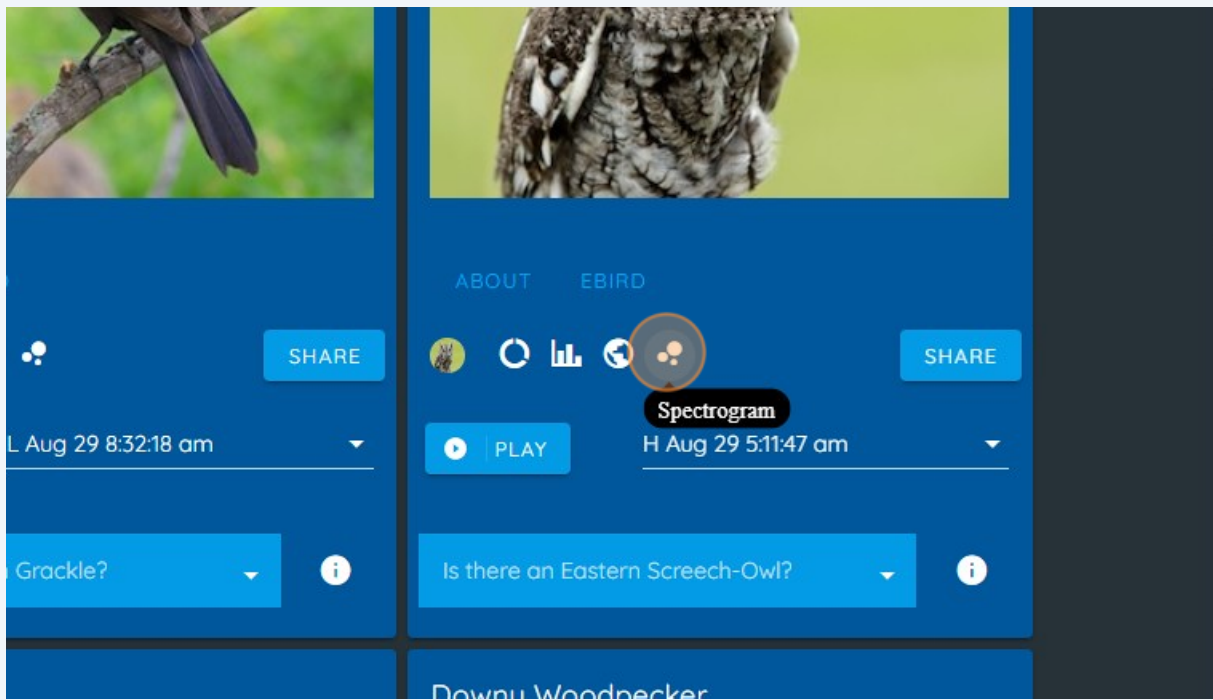
You can have a big impact on the future accuracy of Haikubox recordings by labeling sounds.

1

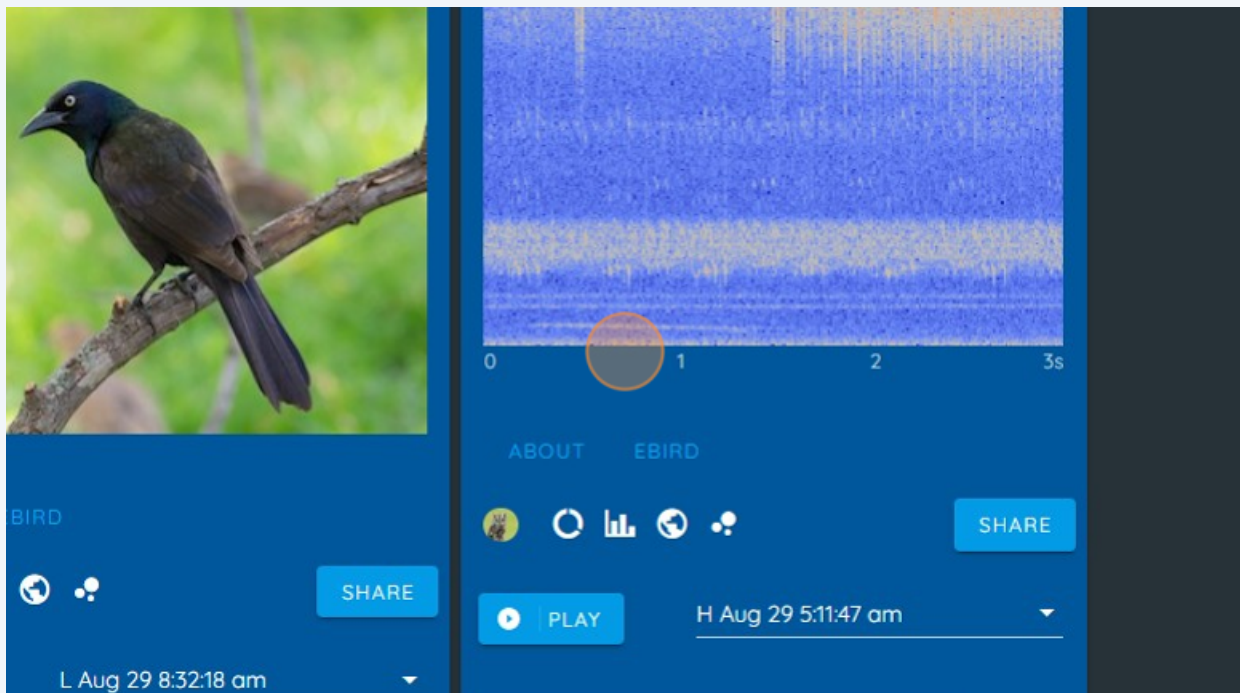
As you explore and listen to birds identified by your Haikubox, we hope you will take a moment to label recordings to confirm they are correct, or let us know when they are wrong. Here we listened to recordings identified by this Haikubox as an Eastern Screech-Owl.



2 Click the bubble icon to see the spectrogram.

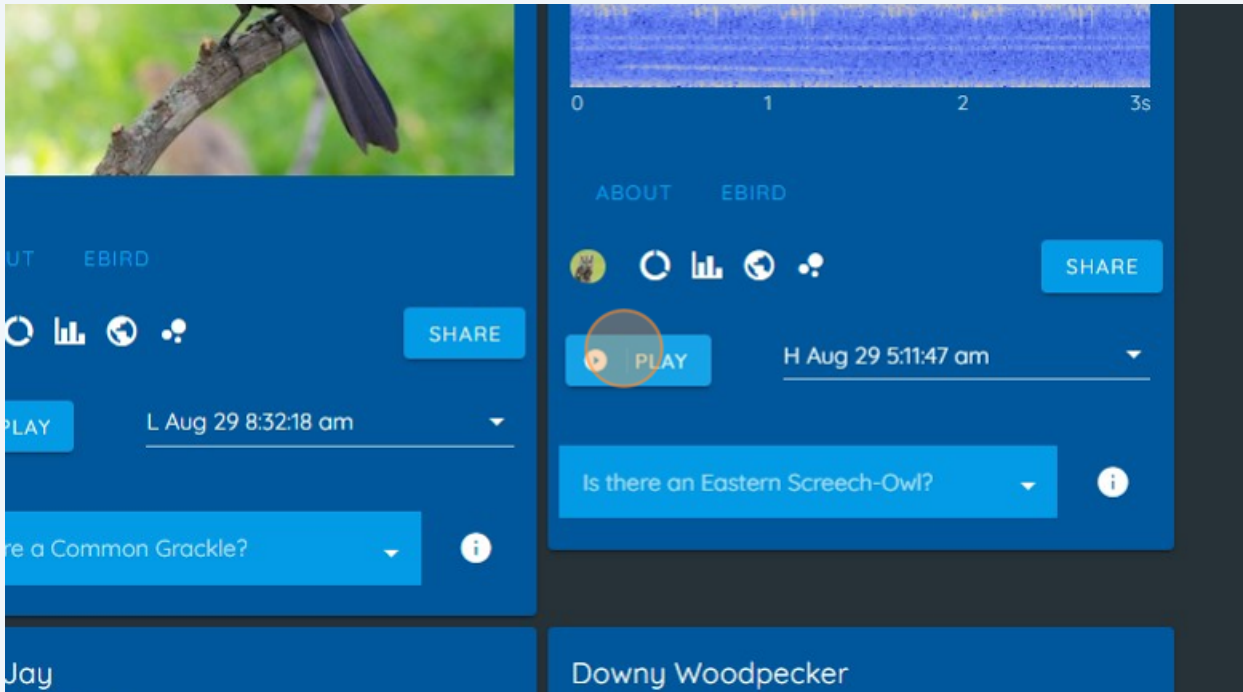


3 Notice this low frequency sound which looks like the traditional Screech-Owl song. You can also see a higher pitched sound from insects, and the highest pitched sounds may be from local bats echolocating to try to find and eat those insects.



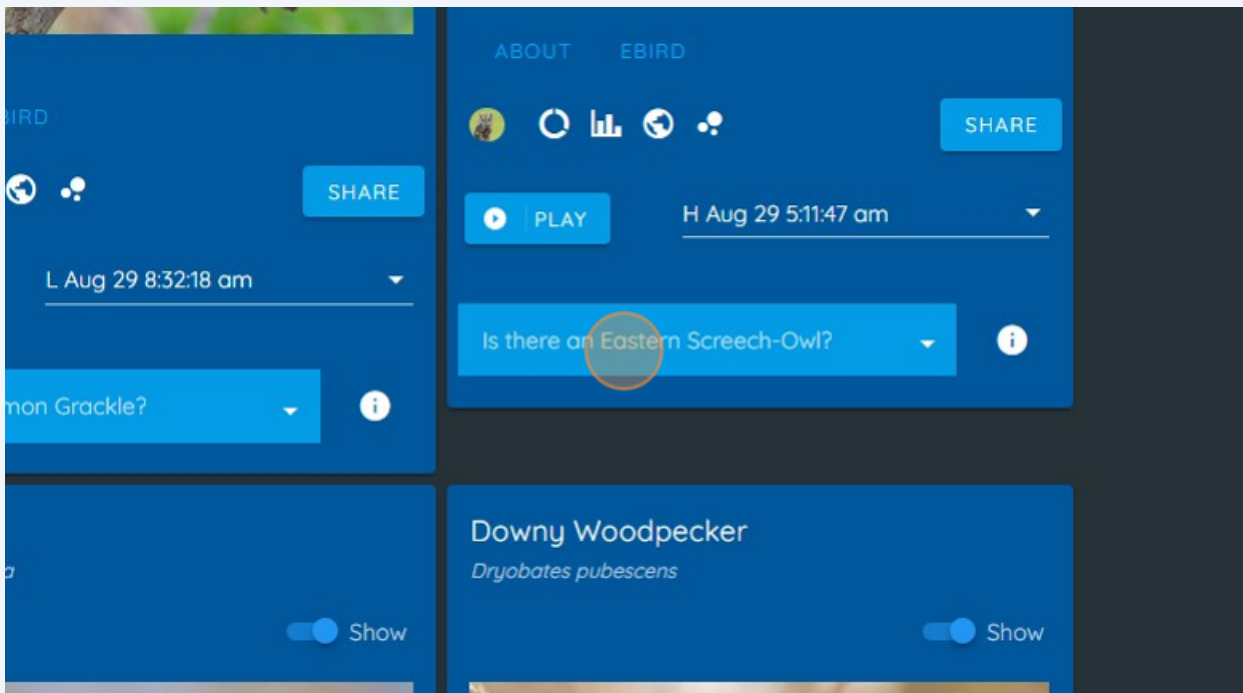
4

To play the sound and confirm it is an Eastern Screech-Owl, click the "PLAY" button.



5

If you confirmed that it is the song of an Eastern Screech-Owl, click the "Is there an Eastern Screech-Owl?" button to label this sound as correctly identified.



6

Click "Yes" to confirm it is correct. If the sound was incorrectly identified, you can either click "No" or "No, it's a..." to share what it was instead (e.g., siren, insect, etc.). Your input is critically important as the Haikubox team continues to improve the product and the neural net running behind it.

