

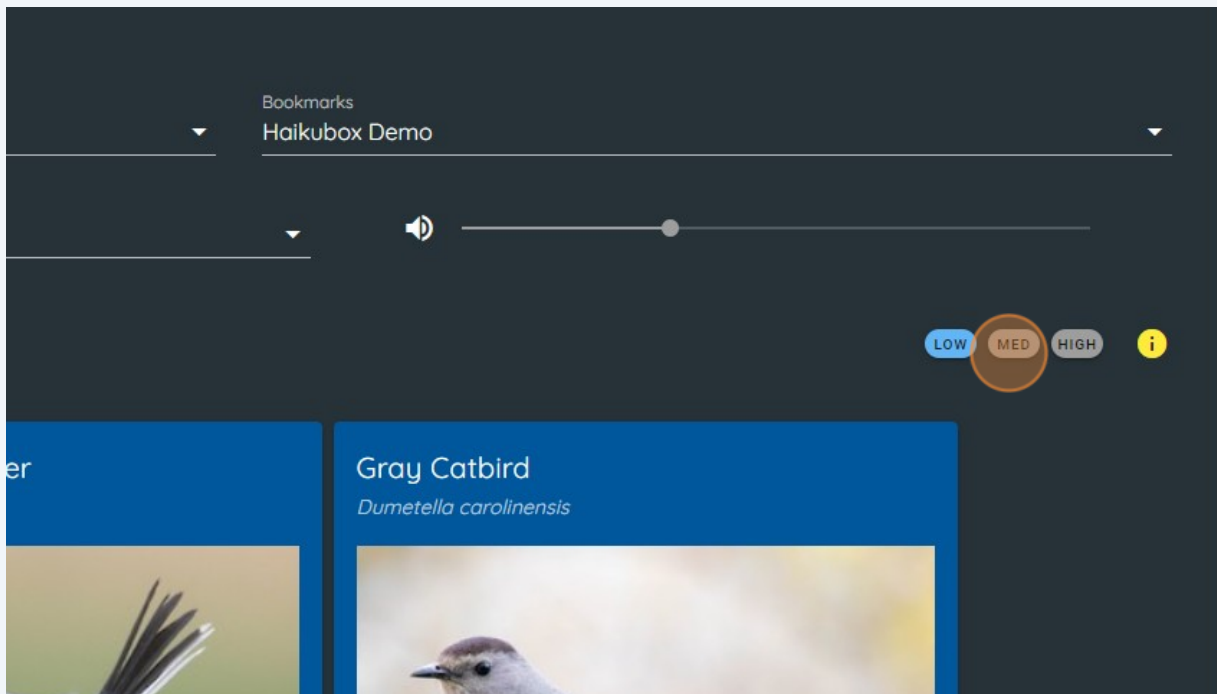
# Changing the Confidence Levels



You can choose which bird identifications show in your bird feed by changing the confidence level.

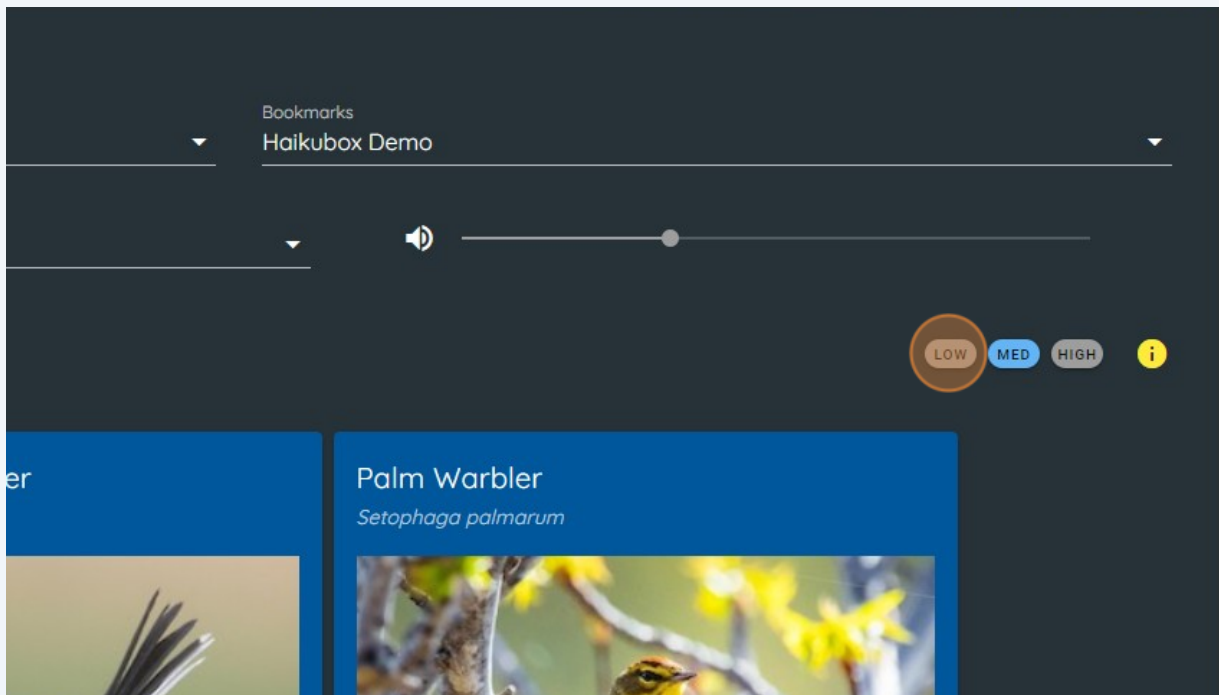
1

Your Haikubox is set up to show the birds it identifies with medium confidence, but you can choose to see only those identified with high confidence (you'll see fewer birds, but they are more likely to be correct), or with low confidence (more species, but more are likely to be your Haikubox's best guess and might be incorrect). To change the confidence level, click the Low Med or High toggle button.



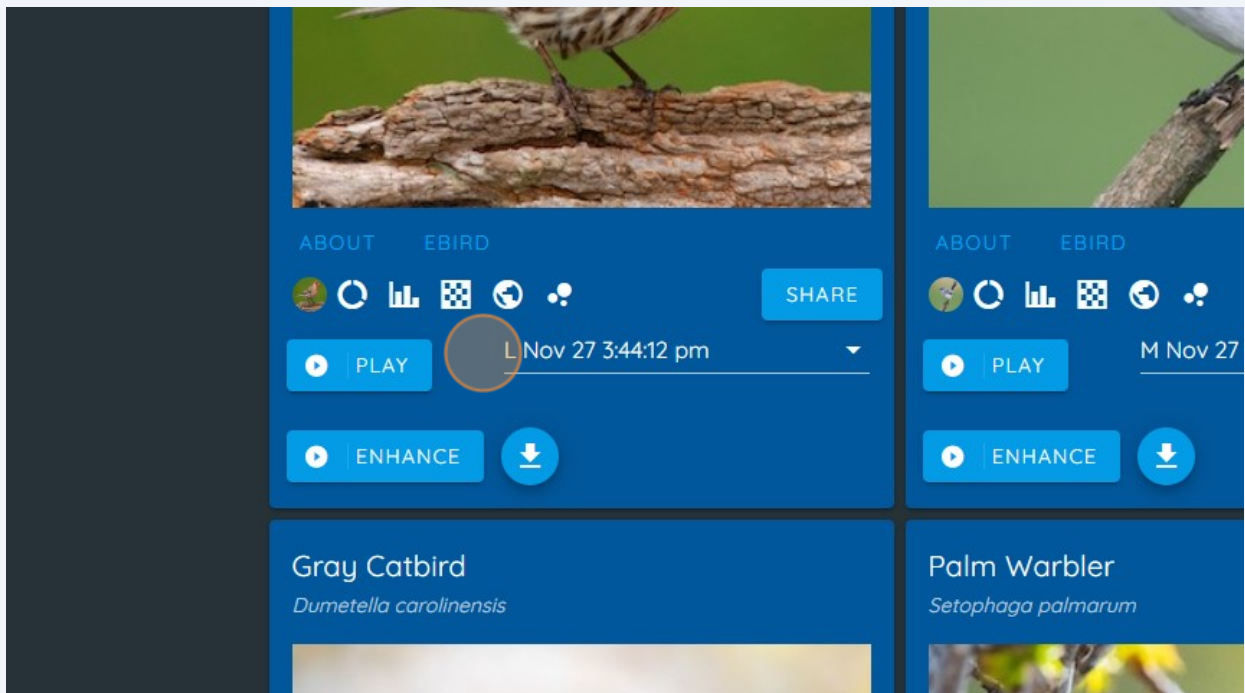
2

Clicking Low will bring up all identifications, including low, medium and high confidence identifications.



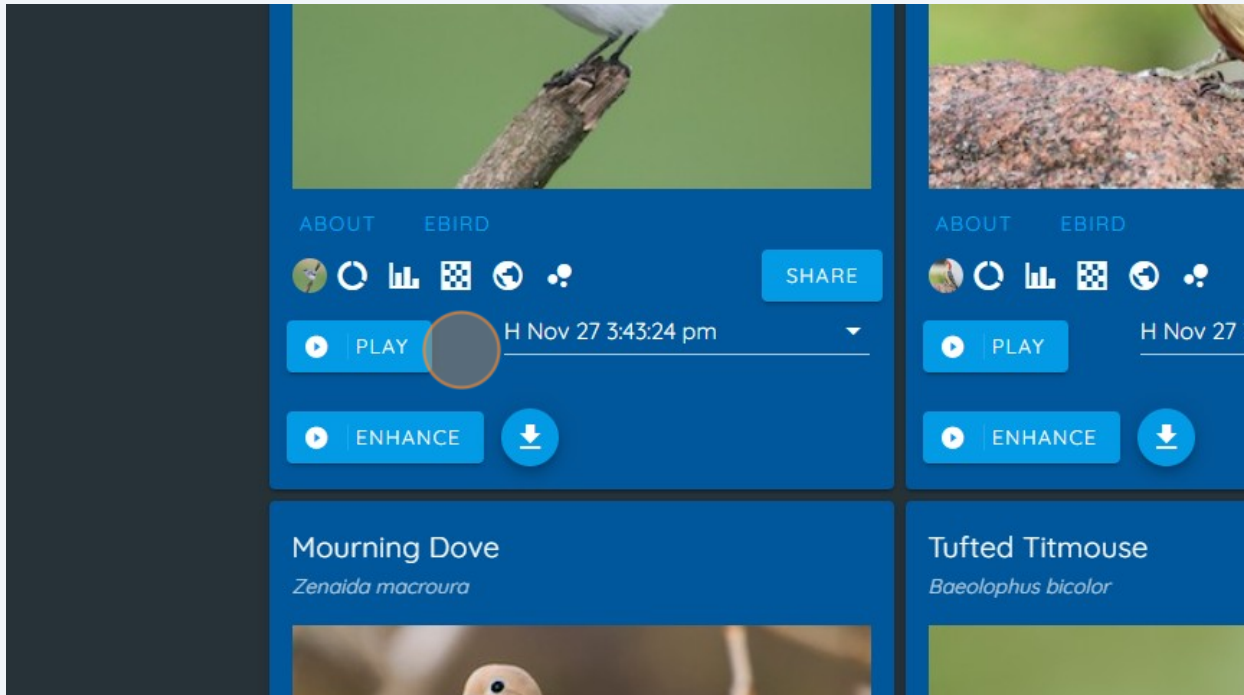
3

You can tell the confidence level of any individual identification and recording by looking for the L, M or H next to the date / time stamp. This recording was made with low confidence.



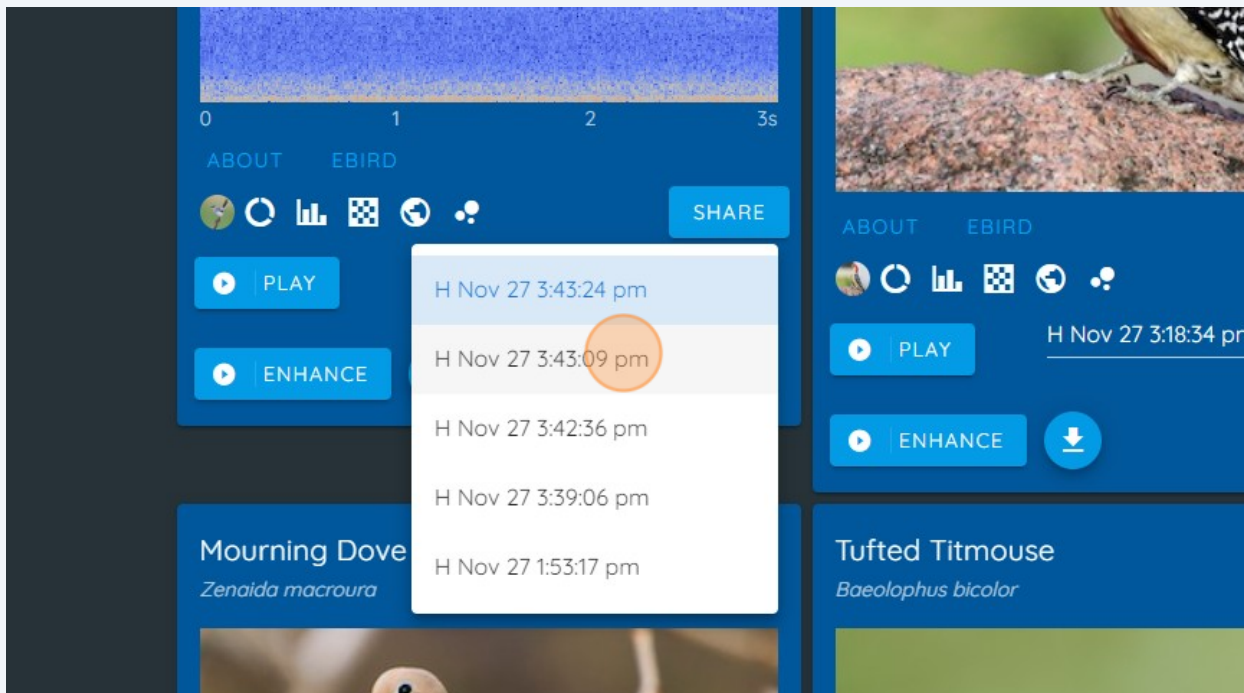
4

If we click the High button, only recordings made with high confidence will show. This recording was made with high confidence.



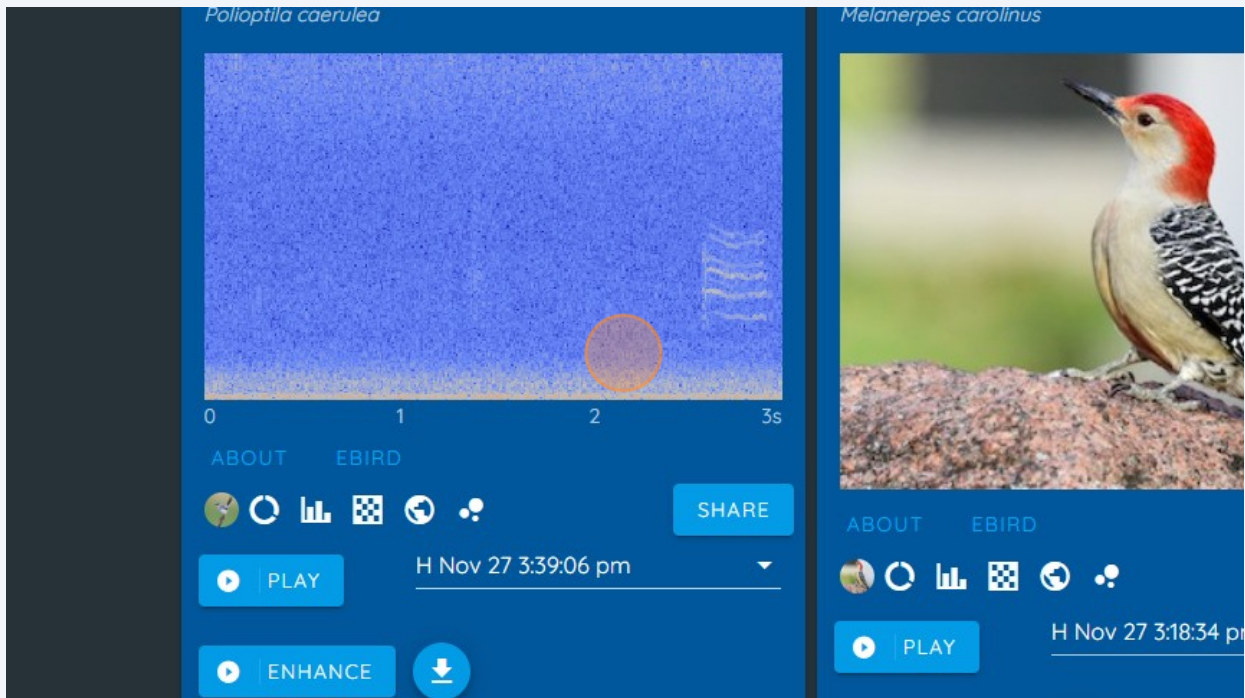
5

Clicking the dropdown list for this species will show the high confidence recordings made during the selected time period. Click any of them to hear the recording and/or see the spectrogram.



6

This is a clear spectrogram for this Blue-gray Gnatcatcher, an identification that this Haikubox made with high confidence.



7

You can then click the Play or Enhance buttons to play this recording.

