

SEDONA

Luxury Residences | Bingin, Bali



02 Sedona
08 Residence 1&2
17 Residence 3
28 Location
31 Team





*Embrace
Quiet Luxury*



A photograph of a modern outdoor pool area. In the foreground, a large, multi-stemmed cholla cactus stands against a textured, light-colored wall. To the right, a pool of clear blue water is visible, surrounded by a patio made of light-colored, irregularly shaped stones. The background shows a plain, light-colored wall and a wooden door frame. The overall aesthetic is clean, minimalist, and evokes a sense of a desert retreat.

Discover the allure of Sedona

A design concept inspired by the captivating journeys of Slim Aaron's sun-soaked summers in Arizona; Sedona evokes the essence of a bygone era.



Welcome to Paradise

A design collaboration between creative and project houses; House of Slim, Studio Paradise and Two Tone Developments, Sedona is an ode to the interplay between nature's magnificence and the discerning taste of luxurious living - in the heart of Bingin, Bali Indonesia.

Just a leisurely 5-minute stroll from the gateway to a postcard-perfect beach, Sedona offers a sanctuary of indulgence and serenity. Immerse yourself in the comfort of our thoughtfully designed 1 and 2-bedroom loft residences, featuring spacious living areas, well-appointed kitchens, and a refreshing pool to rejuvenate your senses.

Take it easy, stay a while.



SEDONA



Residence 1 & 2

1 BEDROOM LUXURY RESIDENCES



Floorplans

RESIDENCE 01

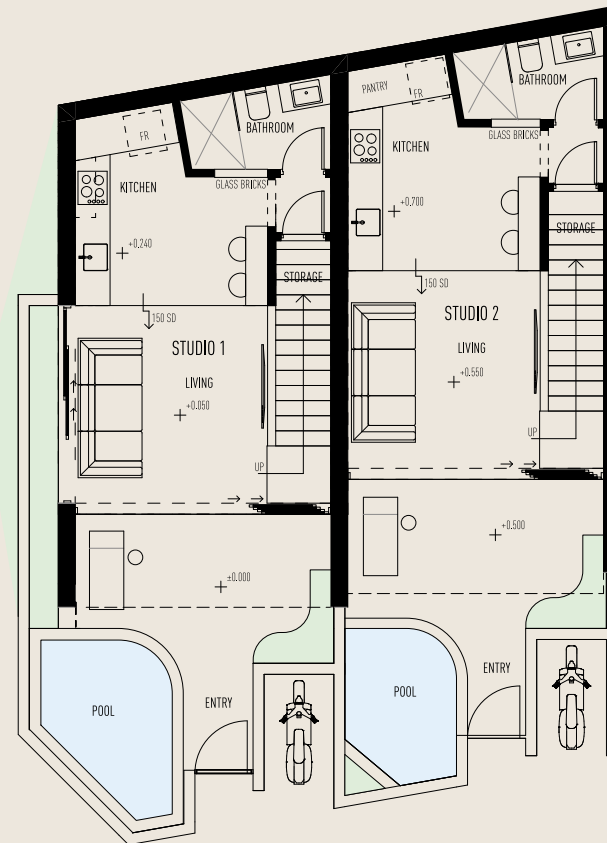
- 1 bedroom loft
- 1 bath
- 1 Swimming pool
- 1 Motorcycle parking

RESIDENCE 02

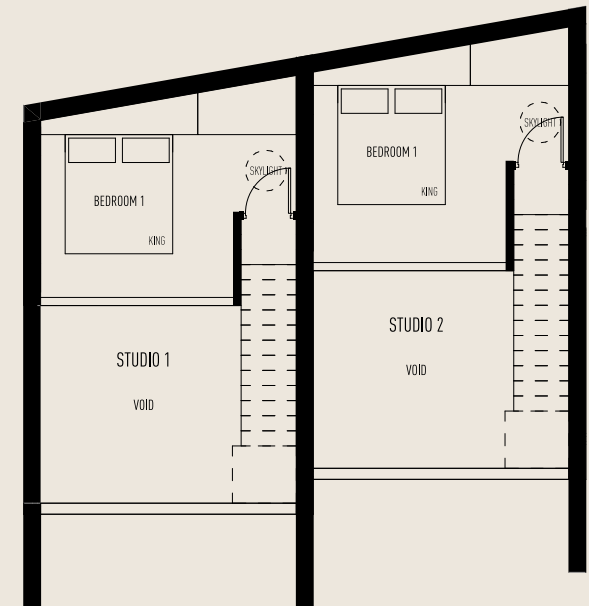
- 1 bedroom loft
- 1 bath
- 1 Swimming pool
- 1 Motorcycle parking



GROUND FLOOR



LEVEL 1



1 BEDROOM RESIDENCE FLOOR PLAN



SLOW LIVING

Every detail has been thoughtfully curated to create a haven for relaxation and unwinding. Sink into the sumptuous comfort of the House of Slim Corduroy lounge, enveloped in a sense of tranquility that allows you to escape the pressures of the outside world.



INDOOR TO OUTDOOR

The interplay of the 2-story high void, the hand-placed stones, and the natural light flooding the space creates an ambiance that awakens your senses.

Boundaries between indoor and outdoor blur, and the beauty of nature unfolds before your eyes. Whether indulging in moments of solitude or entertaining guests, this space is a testament to the art of quiet luxury.



TIMELESS MEETS PRACTICAL

Discover a kitchen meticulously crafted to embody elegance, quality and practicality. The combination of Dark Emperador marble benchtops, brass tapware, black European appliances and solid timber cabinetry presents a sense of warmth and sophistication. No element or function has been overlooked.



CONTRASTING MARBLE

The combination of the House of Slim signature Crema marble with the rich browns of the Dark Emperado offers a uniquely soft and luxurious juxtaposition of finishes.





ESCAPE TO TRANQUILITY

Watch as the soft rays of sunlight delicately filter through the glass bricks on the second level, painting the room in a warm, golden glow. Offering a seamless blend of versatility, this space can transform into an open-air loft by simply opening the windows to the captivating void.

For those seeking privacy, the room can be closed off, creating a serene sanctuary that cocoons you in tranquility.



SLIM AARONS

House of Slim furniture package is paired with a large-scale fine art photographic framed work by none other than the celebrated film photographer Slim Aarons, 'Sunbathing in Arizona' 1967 - transporting you to a time of summers past.



BATHROOM

The bathroom beckons with its awe-inspiring natural marble elements and premium quality fixtures and fittings, creating an ambiance of unparalleled opulence and refinement.

Expertly crafted from the finest natural marble, it provides a luxurious platform for your daily rituals.



House of Slim Exclusive Furniture

Valued at \$34,000 USD (\$48,950 AUD) each 1 bedroom residences comes fully furnished with an exclusive luxury House of Slim furniture package.

House of Slim over the last 2 years has been featured within The Design Files, Real Living and Marie Claire - while being styled in the homes and curated spaces such as Delta Goodrem, Pip Edwards and Jack Morris to name a few.

BEDROOM

- Mala King Bed - Teak and Dark Emperado \$5,900 AUD
- Signature Corduroy King Set - 100% Corduroy \$550 AUD
- Henry Table Lamp - Dark Emperado and Ivory Marble \$2,900 AUD x 2
- Alfred Spheres Set - Ivory Marble \$1,600 AUD
- Brody Floor Length Mirror - Dark Emperado \$2,800 AUD

LOUNGE

- Corduroy 3 Seater Sofa - 100% Corduroy and Teak \$7500 AUD
- Opal Coffee Table - Crema Marble \$3200 AUD
- Jarra Statement Plinths - Crema Marble \$3100 AUD x 2
- Nora Table Lamp - Ivory Marble \$2500 AUD
- Olive Pot - Crema Marble \$1,200 AUD

KITCHEN

- Lottie Stool - Teak and Brown Leather \$700 AUD x 2
- Julien Hanging Lamp - Rustic Onyx and Glass \$1,900 AUD

OUTDOOR

- Tama Sconce - Rustic Onyx \$1,900 AUD x 2
- Louis Sun Lounger - Teak and Weave \$3,200 AUD
- Edee Side Table - Teak and Dark Emperado \$1,400.00 AUD



Residence 3

2 BEDROOM LUXURY RESIDENCE



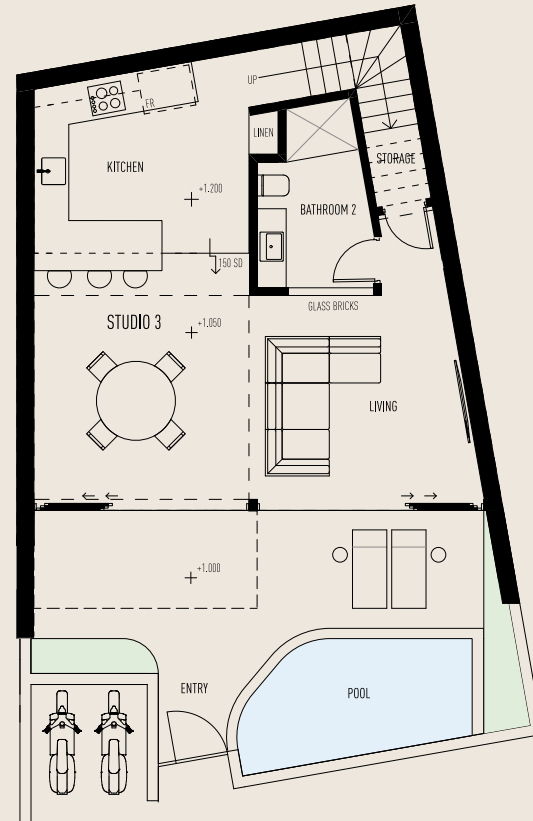
Floorplans

RESIDENCE_03

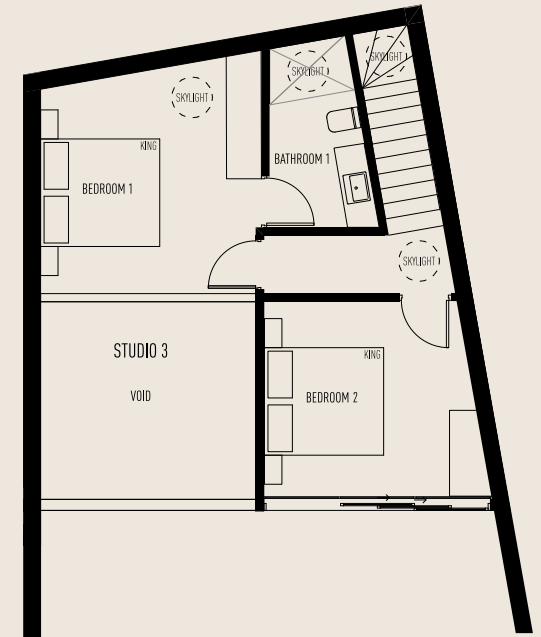
- 2 bedroom luxury villa
- 2 bath
- 1 Swimming pool
- 2 Motorcycle parking



GROUND FLOOR



LEVEL 1



2 BEDROOM RESIDENCE FLOOR PLAN



SLOW LIVING

Every detail has been thoughtfully curated to create a haven for relaxation and unwinding. Sink into the sumptuous comfort of the House of Slim Corduroy lounge, enveloped in a sense of tranquility that allows you to escape the pressures of the outside world.



INDOOR TO OUTDOOR

The interplay of the 2-story high void, the hand-placed stones, and the natural light flooding the space creates an ambiance that awakens your senses.

Boundaries between indoor and outdoor blur, and the beauty of nature unfolds before your eyes. Whether indulging in moments of solitude or entertaining guests, this space is a testament to the art of quiet luxury.



TIMELESS MEETS PRACTICAL

Whether indulging in moments of solitude, entertaining loved ones, or hosting remarkable events, this space exemplifies the art of quiet luxury. It invites you to create unforgettable memories and relish in the harmonious blend of elegant design, refined comfort, and exceptional dining, all within the sanctuary of your own home.



CONTRASTING MARBLE

Discover a kitchen meticulously crafted to embody elegance, quality and practicality. The combination of Dark Emperador marble benchtops, brass tapware, black European appliances and solid timber cabinetry presents a sense of warmth and sophistication. No element or function has been overlooked.





PRIVATE OASIS

Bask in the warm embrace of the sun, where relaxation and rejuvenation intertwine. Take a moment to immerse yourself in the refreshing waters or rinse off under the invigorating outdoor shower, embracing the freedom of an al fresco oasis.



ROOM WITH A VIEW

Adding to the allure, the bedroom provides a picturesque view of the surrounding trees, creating a serene connection with nature. Within this haven, you'll find respite from the outside world, a space where you can unwind, recharge, and immerse yourself in the soothing ambiance.



ESCAPE TO TRANQUILITY

Watch as the soft rays of sunlight delicately filter through the glass bricks on the second level, painting the room in a warm, golden glow. Offering a seamless blend of versatility, this space can transform into an open-air loft by simply opening the windows to the captivating void.

For those seeking privacy, the room can be closed off, creating a serene sanctuary that cocoons you in tranquility.



DAILY RITUALS

The Master Bedroom includes a timeless and refined ensuite bathroom, expertly crafted from the finest natural marble. The ensuite provides a luxurious platform for your daily rituals, using premium quality fixtures and fittings. The seamless integration of functionality and artistry elevates this space to new heights of sophistication.



SLOW LUXURY

Awe-inspiring natural marble elements and premium quality fixtures and fittings, creating an ambiance of unparalleled opulence and refinement.

Expertly crafted from the finest natural marble, it provides a luxurious platform for your daily rituals.



House of Slim Exclusive Furniture

Valued at \$49,000 USD (\$71,210 AUD) the 2 bedroom residences comes fully furnished with an exclusive luxury House of Slim furniture package.

House of Slim over the last 2 years has been featured within The Design Files, Real Living and Marie Claire - while being styled in the homes and curated spaces such as Delta Goodrem, Pip Edwards and Jack Morris to name a few.

MASTER BEDROOM

Mala King Bed - Teak and Dark Emperado \$5900 AUD
Signature Corduroy King Set - 100% Corduroy \$550 AUD
Julien Hanging Lamp - Rustic Onyx and Glass \$1,900 AUD x 2

BEDROOM

Mala King Bed - Teak and Dark Emperado \$5900 AUD
Signature Corduroy King Set - 100% Corduroy \$550 AUD
Julien Hanging Lamp - Rustic Onyx and Glass \$1,900 AUD x 2

LOUNGE

Corduroy 4 Seater Sofa - 100% Corduroy and Teak \$9900 AUD
Opal Coffee Table - Crema Marble \$3700 AUD
Jarrah Statement Plinth - Crema Marble \$3200 AUD x 2
Nora Table Lamp - Ivory Marble \$2800 AUD
Olive Pot - Crema Marble \$1,200 AUD

DINING

Alfie Dining Table - Dark Emperado and Ivory Marble \$9,500 AUD
Freddie Dining Chair - Teak & 100% Corduroy \$790 AUD x 4

KITCHEN

Lottie Stool Tall - Teak and Brown Leather \$850 AUD x 3
Julien Hanging Lamp - Rustic Onyx and Glass \$1,900 AUD
Tama Sconce - Rustic Onyx \$1,900 AUD x 2

OUTDOOR

Tama Sconce - Rustic Onyx \$1,900 AUD x 2
Louis Sun Lounger - Teak and Weave \$2,300 AUD x 2
Edee Side Table - Teak and Dark Emperado \$1,400 AUD



The Location



Thriving Bingin

Just a 5-minute walk from the gateway to the postcard-perfect Bingin Beach, Sedona offers a haven of quiet luxury for those seeking respite from the hustle and bustle of everyday life. Located on prime real estate on Jalan Pantai Bingin, allow Sedona to offer you the simplicities in life - with a short stroll away from famed local eateries such as Cashew Tree, Drifter, Bambu Fitness and more.



Welcome to the Neighbourhood

1. Sedona Luxury Residences
2. Bingin Beach Access
3. Drifter Surf Shop Cafe & Gallery
4. Lucky Fish Lounge
5. Bambu Fitness & Café Bali
6. The Cashew Tree
7. DiVino by Casa Asia
8. Alchemy Bali Uluwatu
9. Gooseberry Restaurant
10. Dreamland Beach
11. Padang Padang Beach
12. Single Fin Bali
13. Uluwatu Beach
14. Thomas Beach
15. MASON. Restaurant Uluwatu



A close-up photograph of a person's hands using a hammer on a wooden surface. The person is wearing a blue long-sleeved shirt. The hammer has a yellow handle and a black head. The wood is light-colored and shows some texture and grain. The background is slightly blurred, showing more of the wooden surface and the person's arm. The overall scene is brightly lit, suggesting an outdoor or well-lit indoor environment.

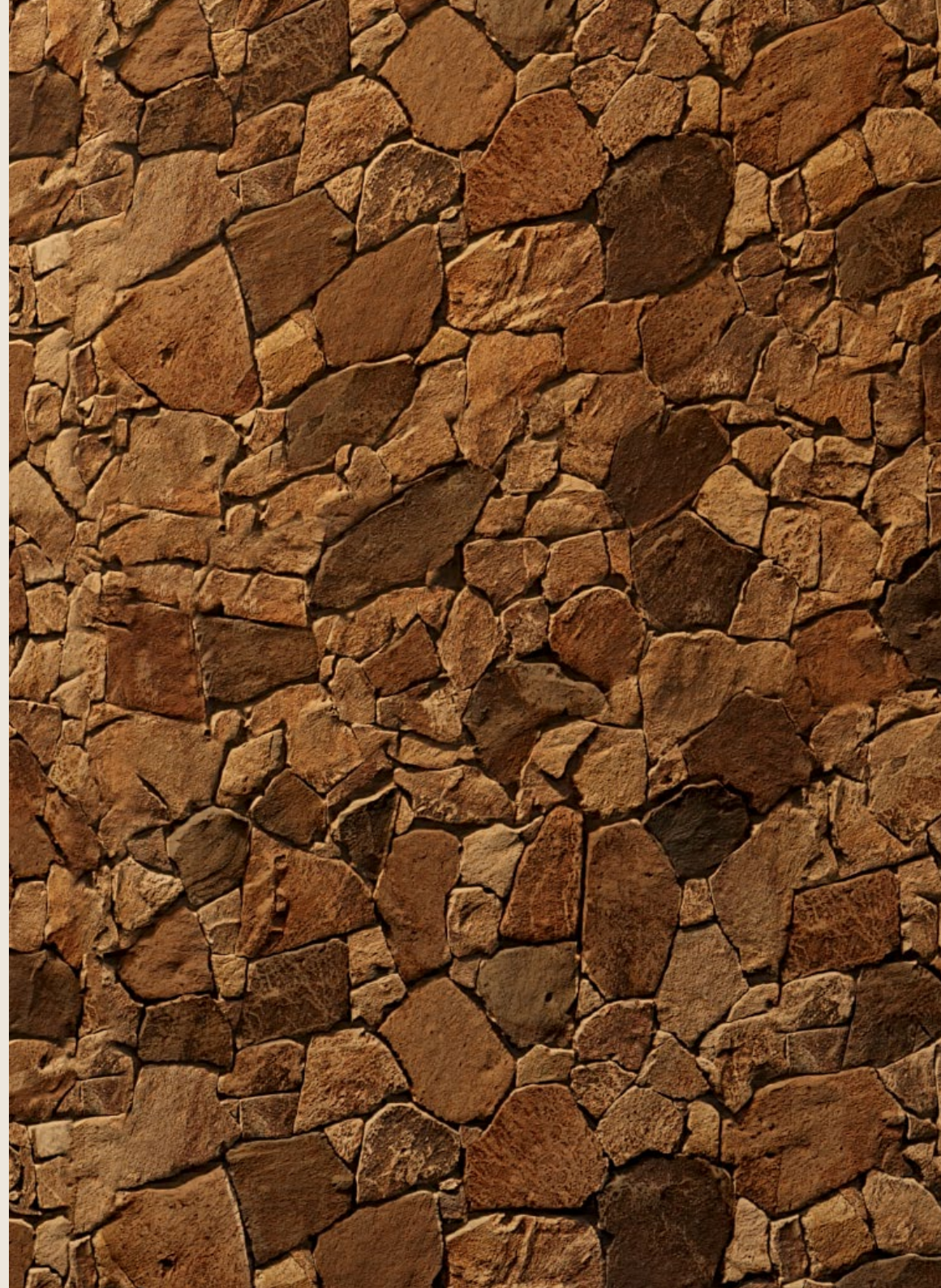
The Team





Inspired by the elements

The colors and textures that adorn these residences speak of raw charm and unparalleled sophistication. Here, nature's handcrafted marvels take center stage as hand-selected stones, hewn from the earth, have been thoughtfully placed to create a seamless wall of natural beauty.





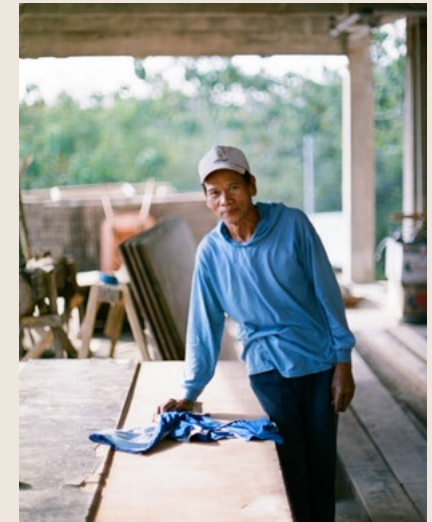
Built to withstand them

Our focus lies in constructing buildings that can withstand the unique challenges of the tropical Indonesian climate while showcasing impeccable craftsmanship and quality finishes. We believe in delivering a smart investment for buyers, offering not only high-quality construction but also timeless design that transcends trends and stands the test of time.

The artisanal hands behind the project

Under Bali Coastal Construction's leadership, a team of exceptional artisans are translating the Sedona vision into reality.

The team work under conditions that allow them to fulfil their religious calendar events, while enjoying the capability to afford time off for beloved family time.



Operational Expertise

Born from a desire to blend House of Slim's elemental inspirations, Two Tone Projects' development acumen and Studio Paradise's internationally recognized creative thinking, Sedona emerged.

Capitalizing on our established network in Bali, we seized the opportunity to collaborate with a renowned New Zealand builder, Bali Coastal Construction. Their vision to introduce their Western construction standards to Bali is now redefining the possibilities of quality; skilfully navigating the unique challenges posed by the island's climate.



DEVELOPER | TWO TONE PROJECTS

Two Tone Projects is a boutique luxury property firm, leveraging two generations of property development experience across Indonesia, Japan and Australia.

Integrating local Indonesian and Australian networks with small-scale development expertise, they prioritize sustainable footprints, community partnerships and construction designed to endure.



BUILDER | BALI COASTAL CONSTRUCTIONS

New Zealand raised and trained, the directors of Bali Coastal Constructions had a vision to introduce their Western construction standards to Bali.

With over 15 years experience in building to Australian and New Zealand standards they are now redefining the possibilities of quality; skilfully navigating the unique challenges posed by the island's climate.

The Design Collaboration

A design collaboration between spatial, creative and branding houses House of Slim and Studio Paradise, Sedona epitomises the fusion of artistry and luxury.



HOUSE OF SLIM
FURNITURE, ARCHITECTURE & INTERIORS

House of Slim is a bold, considered and intimate furniture brand.

With both brand directors being based in Indonesia for 7+ years, House of Slim prioritizes their collaborative relationship with the collective of artisans located in a small local village in Central Indonesia. Intentional and slow craftsmanship is embedded within the brand ethos, with each statement piece hand-crafted by taking anywhere between 15-70 hours to create.

House of Slim over the last 2 years has been featured within The Design Files, Real Living and Marie Claire - while being styled in the homes and curated spaces such as Delta Goodrem, Pip Edwards and Jack Morris to name a few.



STUDIO PARADISE
BRANDING, ARCHITECTURE & INTERIORS

Founded in New York City in 2014, Studio Paradise is a brand focused creative agency with offices in Los Angeles and Sydney. They've successfully transformed the global perception of more than 60 companies, winning awards like the Cannes Grand Prix and D&AD yellow pencils and collaborating with companies like Google, Marc Jacobs and Merrell.

Their first-principles approach to design and their elite network of collaborators allows them to transition seamlessly from branding to advertising to spatial design, working across a wide range of sectors.



Take it *easy*. Stay a while.

CONTACT BALI

Tyler O'Neil
sedona@slimsummerhouse.com
+62 821 6646 8212

CONTACT AUSTRALIA

Hayley Boyle
sedona@slimsummerhouse.com
+61 403 275 337

By using or accessing the brochure, you agree with the Disclaimer without any qualification or limitation. Two Tone Projects reserves the right to terminate, revoke, modify, alter, add and delete any one or more of the terms and conditions outlined in the brochure. Two Tone Projects shall be under no obligation to notify the user of the amendment to the terms and conditions and the user shall be bound by such amended terms and conditions. Computer generated images, walkthroughs and render images used on this brochure are the artist's impression and are an indicative of the actual designs. The imagery used on the brochure may not represent actuals or may be indicative of style only. The information on this brochure is presented as general information and no representation or warranty is expressly or impliedly given as to its accuracy, completeness or correctness. It does not constitute part of a legal offer or contract. The user must verify all the details and specifications, including but not limited to the area, amenities, specifications, services, terms of sales, payments and all other relevant terms independently with our sales/ marketing team prior to concluding any decision for buying any unit in any of our projects/ developments. Notwithstanding anything, in no event shall Two Tone Projects, their promoters, partners/ directors, employees and agents be liable to the user for any or all damages, losses and causes of action (including but not limited to negligence), errors, injury, whether direct, indirect, consequential or incidental, suffered or incurred by any person/s or due to any use and/ or inability to use this brochure or information, action taken or abstained through this brochure. Prospective Buyers should make their own enquiries and where applicable, obtain appropriate professional advice as to their particular circumstances. All purchases are subject to Contract Terms. The Two Tone Projects is not liable for any loss or damage suffered as a result of any Buyer's reliance on marketing material.

SLIMSUMMERHOUSE.COM/SEDONA

EMAIL: SEDONA@SLIMSUMMERHOUSE.COM