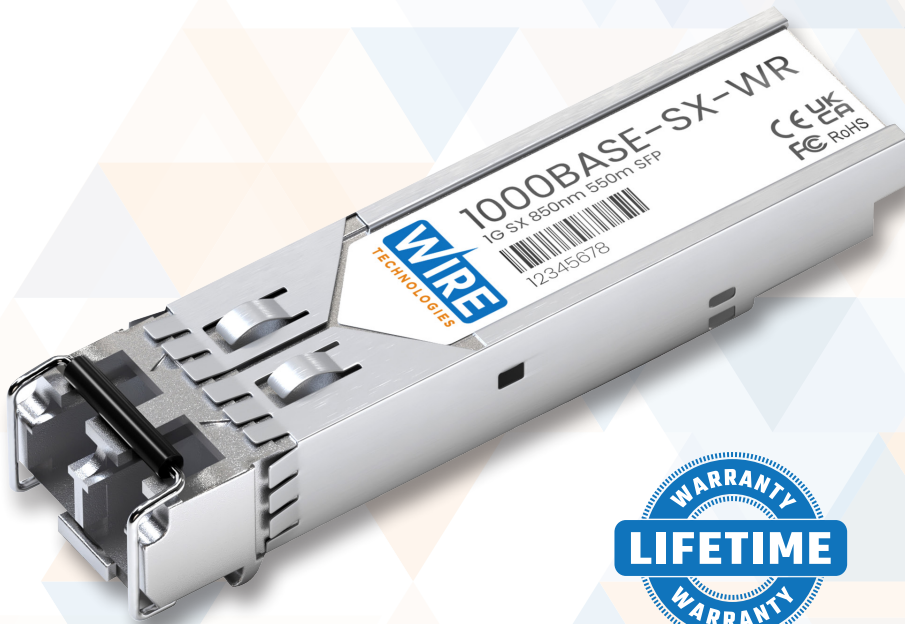


1000BASE-SX SFP

850nm 500m



Popular Compatibility Options

Vendor	Part Code
Wire	1000BASE-SX-WR
Cisco	GLC-SX-MMD
Juniper	EX-SFP-1GE-SX
Juniper	QFX-SFP-1GE-SX
Juniper	SRX-SFP-1GE-SX
Mellanox	MC3208011-SX
Brocade	E1MG-SX-OM
HPe	J4858C
Dell	320-2881
Extreme	I-MGBIC-GSX
Arista	SFP-1G-SX

75+ other vendors available

>1000BASE - SX Specifications

Form Factor:	SFP
Data Rate:	1.25Gbs
Tx/Rx Wavelength:	850nm
Compatible with:	See table
Reach:	500m
Cable Type:	MMF
Interface Type:	SFP
DDM/DOM:	Yes
Connector Type:	Duplex-LC
Power Budget:	-3~-9dBm
Temperature Range:	0-70°C
Warranty:	Lifetime - See Warranty Document

>1000BASE - SX Features

- Hot pluggable
- Protocol- SFF-8472 IEEE 802.3AH-2004
- RoHS-6 compliant
- Built-in digital diagnostic function
- Compliant with OEM vendor multi-source agreement

>Testing

- Compatibility Tested
- Performance Tested
- 100% Testing of all Transceiver

>Description

This 1000BASE-SX compatible SFP transceiver provides 1G-SX throughput up to 500m over Multi-Mode Fibre (MMF) using a wavelength of 850nm via an LC connector. It is guaranteed to be 100% compatible with the host device.

Digital Optical Monitoring (DOM) support is also present to allow access to real-time operating parameters. We stand behind the quality of our products and proudly offer a lifetime warranty.