

## Freya Nursing Chair with Stool



FGWY V1/9002

# IMPORTANT: READ CAREFULLY AND RETAIN FOR FUTURE REFERENCE

Your nursing chair is tested and approved to BS EN 12520:2015 safety requirements for domestic seating.

## WARNING

- Do not use this product without reading the instructions for use first.
- The chair must be placed on a horizontal tough flooring.
- Care should be taken as the underside of a rocking chair could present a hazard to other people when in use.
- Do not use the chair as a step stool.
- Do not sit on the edge of the seat, armrests or on the backrest as this could cause the chair to tip over, or cause deformities or rupture the seams.
- Don't jump or apply sudden force to the furniture. This may damage the frame or suspension.
- Children shall not be allowed to play unsupervised in the vicinity of the chair.
- Do not leave children unattended on or beside the chair.
- Be aware of the risk of open fires and other sources of heat, such as electric bar fires, gas fires, etc. in the near vicinity of the chair.
- Do not use the chair if any parts are missing, damaged, or broken. Contact Babymore for replacement parts or instructional literature. Do not substitute parts.
- All assembly fittings should always be tightened properly and that check regularly that no screws are loose.

## Care and Cleaning

- Regularly inspect the fixtures to ensure they are secure and in full working order.
- Use of solid wood and other materials can be sensitive to moisture and temperature. We recommend keeping furniture in an environment with 45-60% relative moisture and at 10-25°C.
- Keep furniture away from radiators, air conditioners and extreme temperatures (at least 30cm distance).
- Protect your furniture from direct sunlight, which can discolour fabric.
- When moving furniture from one place to another, lift don't drag.
- Wipe away spills immediately to prevent staining.
- We recommend dispersing weight evenly across the seat, rather than repeatedly sitting in the same spot.
- Be aware of sharp objects that may scratch or chip the finish.
- Take extra care of clothing that is new or not pre-washed, also sharp elements, that may leave stains or marks.
- Use a cloth dampened with water and/or mild soap, never clean with abrasive cleaner.
- Cushions are to be dry cleaned only.

# PARTS LIST

**A** Left Arm



**B** Chair Back



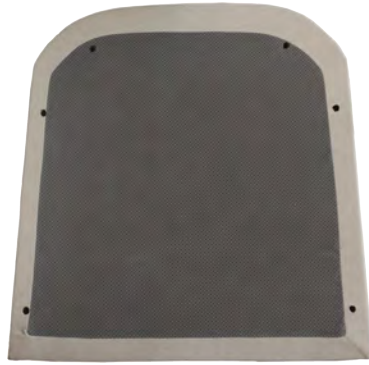
**C** Right Arm



**D** Seat Cushion



**E** Seat Base



**F** Stool Top



**G** Base leg panel x 2



**H** Chair leg x 2



**I** Stool leg x 4



## Fittings List

Bolt -60mm x 4



Bolt -40mm x 10



Spring Washer x 14



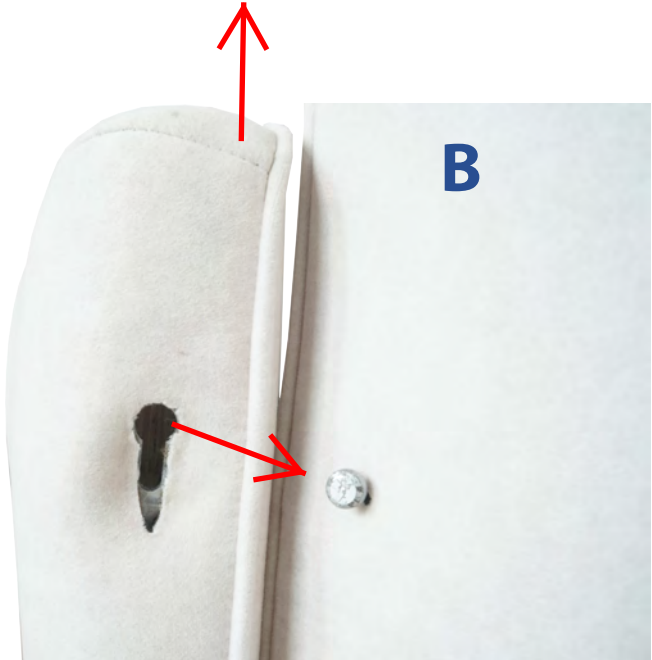
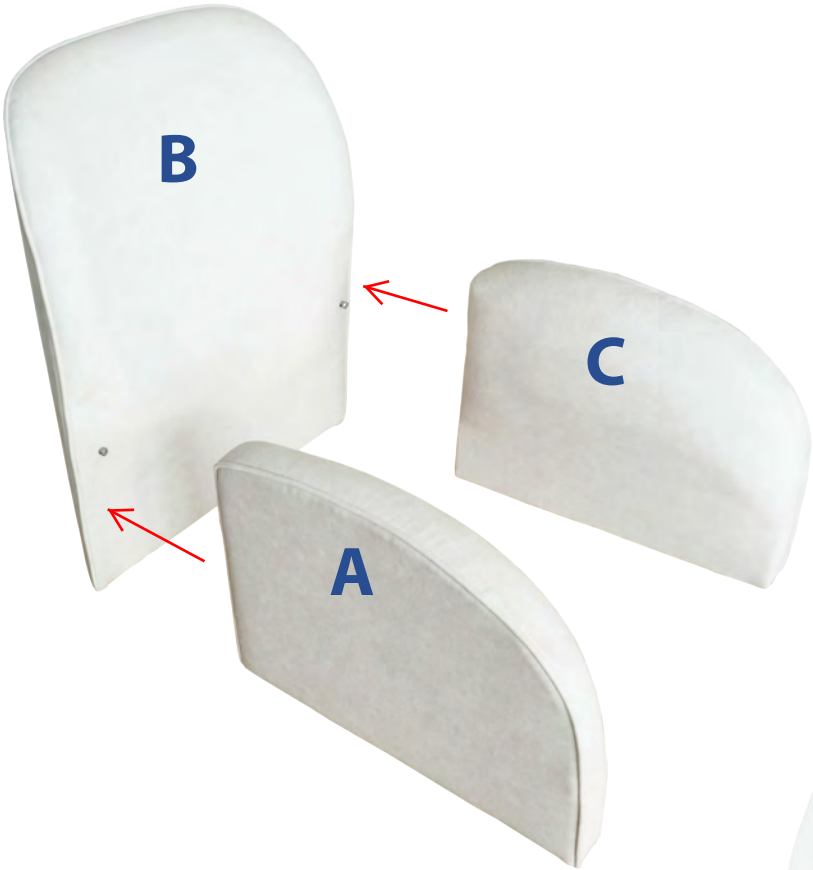
Washer x 14



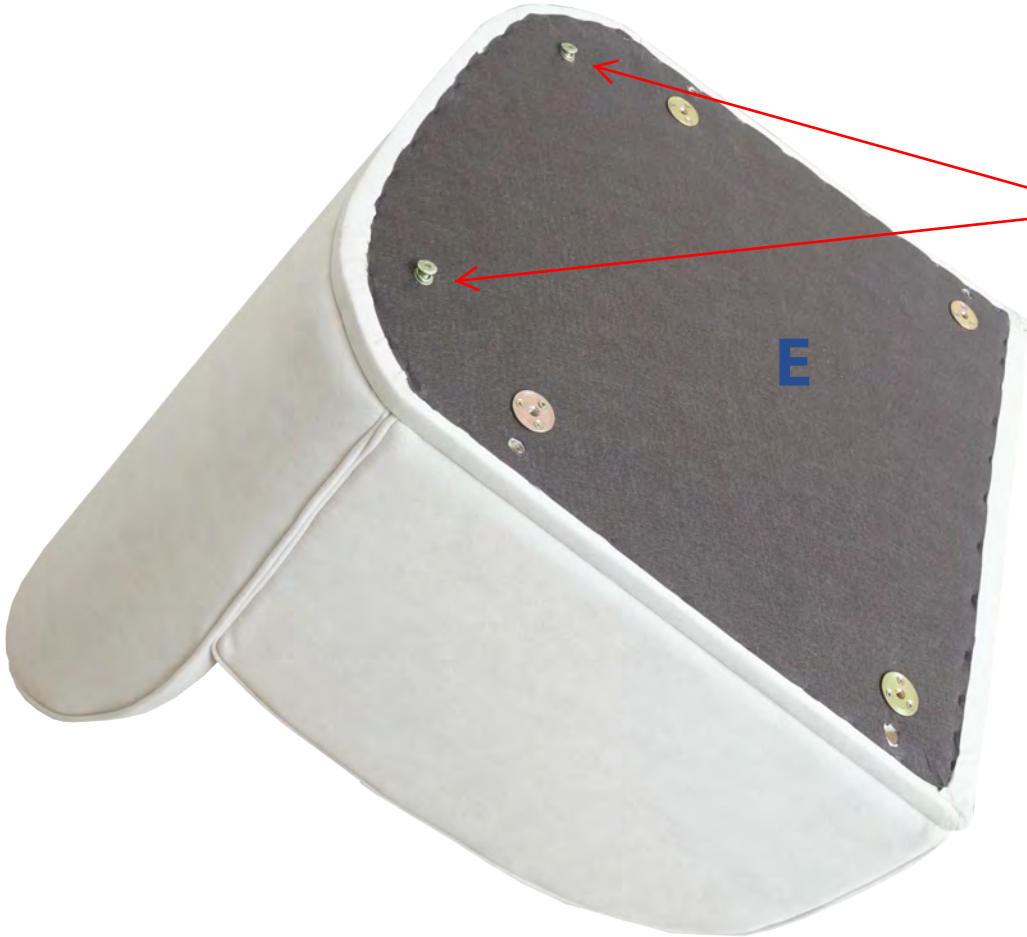
Allen Key x 2



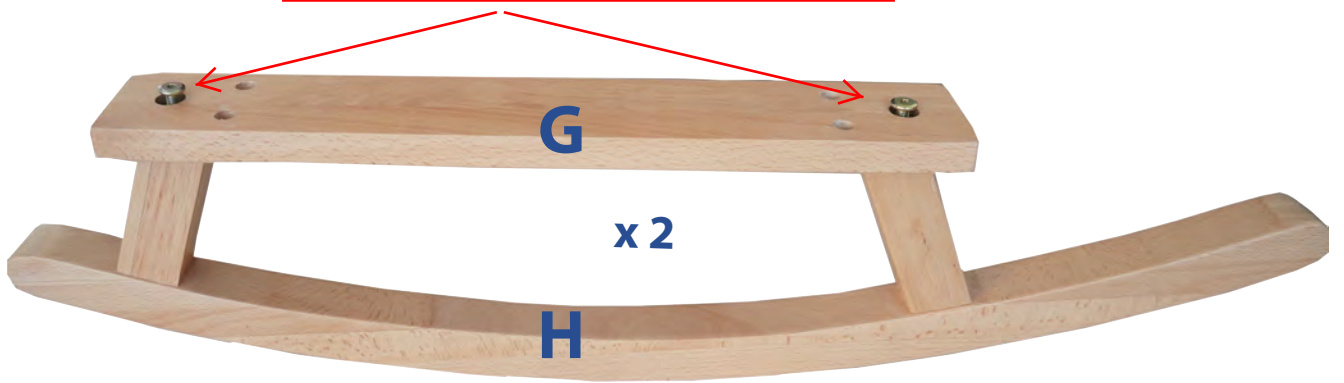
# Chair Assembly



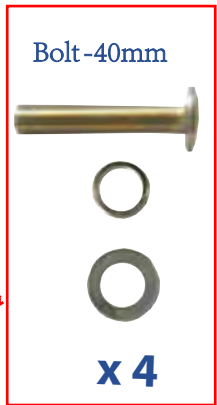
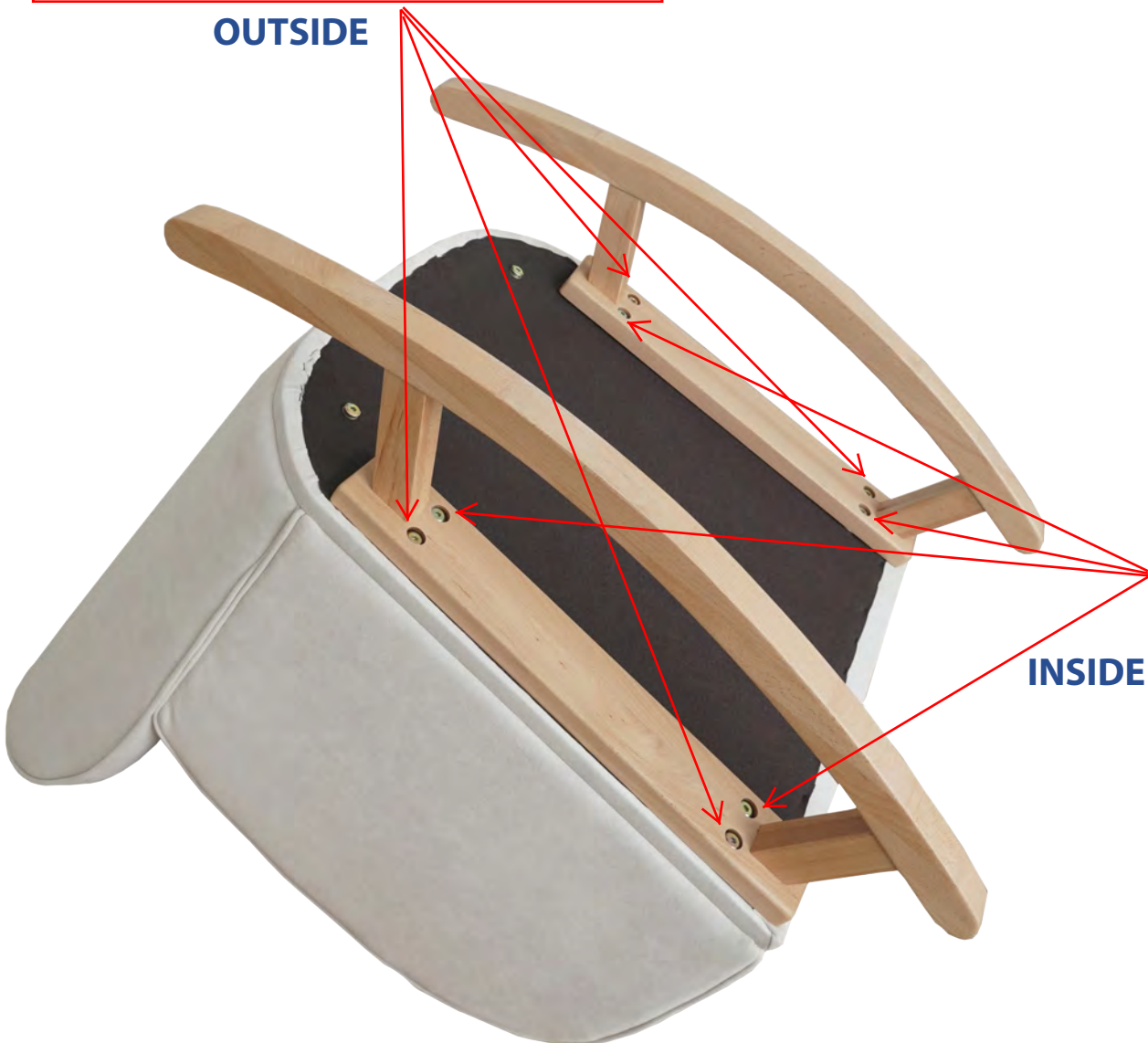
# Chair Assembly (continue)



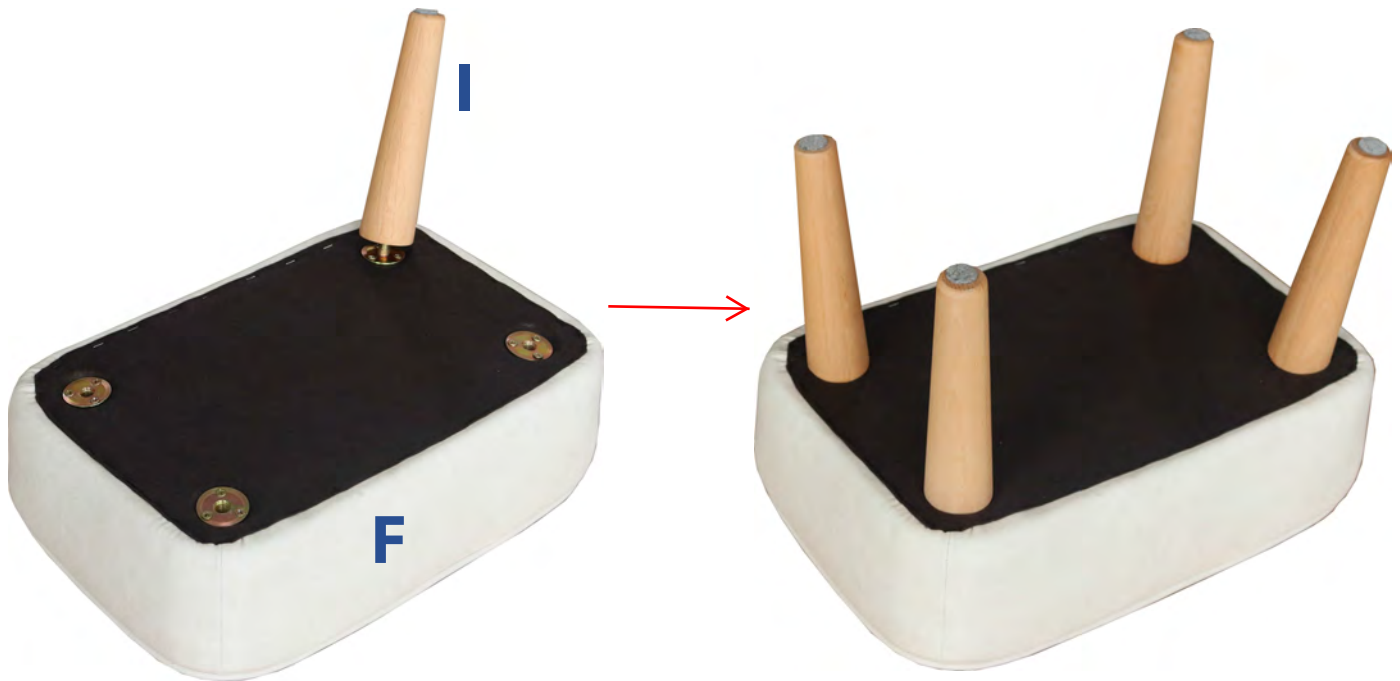
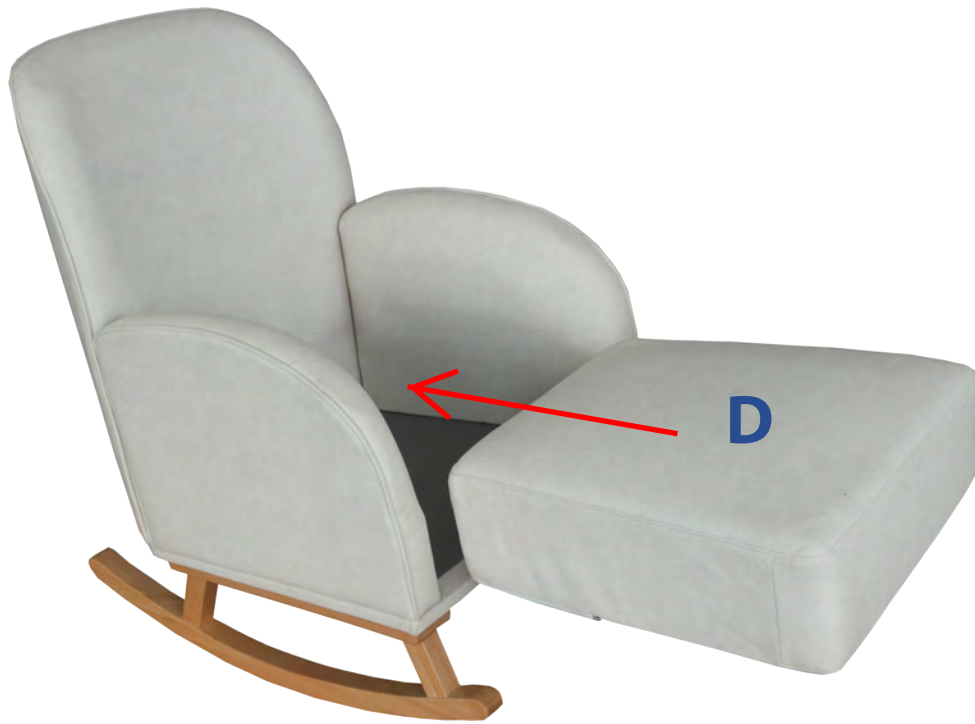
# Chair Assembly (continue)



OUTSIDE



# Assmebly - Chair & Stool



# Babymore

more for your baby



#babymoreuk

Babymore tel: + 44 (0) 20 3475 5588 • [www.babymore.co.uk](http://www.babymore.co.uk) • e: [customerservices@babymore.co.uk](mailto:customerservices@babymore.co.uk)

Unit C2, Zenith Industrial Estate, Paycocke Road, Basildon, Essex, UK, SS14 3DW