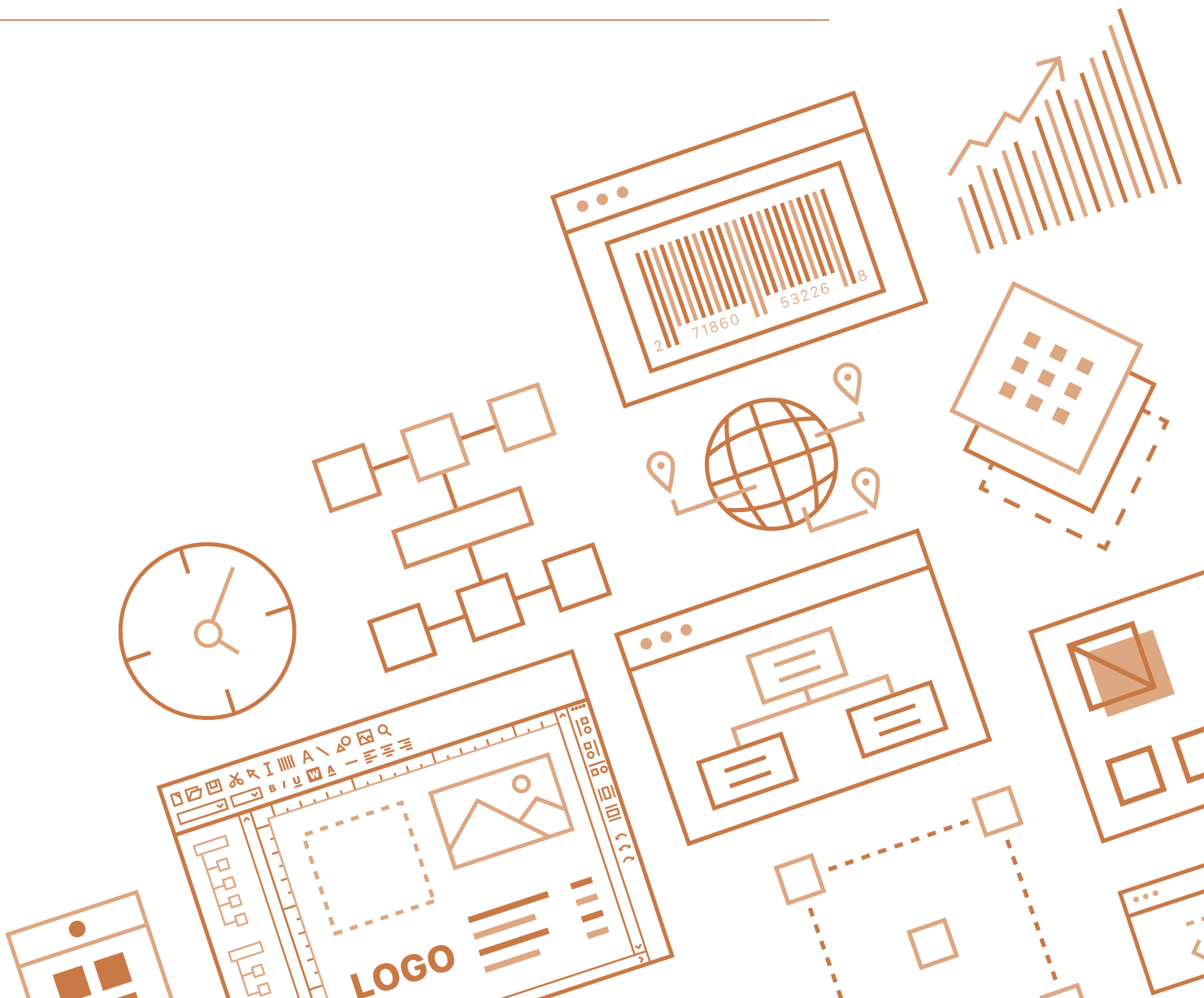


# Create, automate and manage labels, barcodes, RFID tags and more

---

## BARTENDER AND ENTERPRISE DEPLOYMENTS

---



# The world's most trusted software for enterprise labeling

When you choose BarTender®, you're getting a proven enterprise labeling system that simplifies supply chain and compliance labeling, instead of a complicated one that creates ongoing costs.

BarTender is built from the ground up to support the complexities of enterprise-scale deployments. It's the labeling software standard for the world's most dynamic supply chains and manufacturing operations in every industry — from aerospace and automotive to chemical and pharmaceutical, from food and beverage to retail and medical devices. BarTender provides the security, traceability, transparency and interoperability that enable regulatory compliance and supply chain velocity.

BarTender offers the flexibility to define your labeling solution based on your needs. It completely integrates with virtually any business system or WMS, including Oracle, SAP, IBM Websphere, Sage, Infor, HighJump, Epicor and Microsoft Dynamics — even “homegrown” WMSs. And you can print from any operating system, device or web browser. BarTender enables verified users to choose designs, complete print-time data forms and launch print jobs to any printer on the internet, anywhere in the world, with just a few clicks in a browser or the BarTender Print Portal App.

## The BarTender enterprise team

Our dedicated Enterprise Solutions Group (ESG) provides support for you every step of the way, beginning with our detailed discovery process that helps us understand and assess your existing systems and desired goals, all the way to final deployment and technical support post-launch. The ESG is a team of smart, creative, solution-focused experts with decades of experience in enterprise labeling, ERP integrations, data management and global systems. They've managed complex installations in every industry and geography.



### A spectrum of configurable security options

BarTender offers layers of security options, ranging from simple Print-Only mode to complex role-based permissions, configurable to meet every business need.

- ▶ Manage access to label design and modification, database setup, document saving, printing and more from a central location onsite — or at a facility on the other side of the world.
- ▶ Apply label format encryption to any security level, providing an additional layer of protection against unauthorized use.
- ▶ Password-protect individual layers to prevent unauthorized edits.
- ▶ Combine BarTender's electronic signature feature and comprehensive data logging to bring full audit trail accountability to the entire labeling process, enabling compliance with high security standards, including the 21 CFR Part 11 guidelines.



### Centralized control and compliance

BarTender's comprehensive system management features enable enterprises to centrally monitor and secure their design and printing operations across sites and continents.

- ▶ Rapidly deploy label design, data and format changes enterprise-wide in response to shifting business needs — and maintain data integrity.
- ▶ Consolidate management of your system's labeling processes and workflows, deploying the business rules and process controls that create value while reducing redundant and duplicated activities.
- ▶ Connect your business data with almost any output device, including printers, RFID encoders and marking devices.
- ▶ Standardize formats, symbologies and security features throughout the enterprise.
- ▶ Support regional differences such as languages, regulations and units of measure, whether you have one device at a single site or thousands at facilities around the world.
- ▶ Share global data fields — such as incrementing serial numbers — among all documents.



## Powerful design and process automation with Intelligent Templates™

BarTender's exclusive Intelligent Templates™ provide unmatched versatility and control over label design and automation.

- ▶ Reduce the design and maintenance of hundreds of individual label templates to just a handful of flexible documents.
- ▶ Automatically trigger the printing of design layers and even individual objects based on a single data source, database field, or multiple conditions — all without scripting.

### Built to meet the interoperability demands of the supply chain

BarTender offers the flexibility to define your labeling solution based on your needs. Its native support for XML means that it's simple and straightforward to connect BarTender to the systems you use every day — financial, data warehouse, WMS, HR and more.



### Automate integration with your data, wherever it lives

Completely integrate BarTender's printing capabilities with virtually any business system, WMS or ERP, including Oracle, SAP, IBM Websphere, Sage, Infor, HighJump, Epicor and Microsoft Dynamics — even “homegrown” systems.



### Support for the most complex configurations

Schedule multiple actions within a single trigger event such as a POST or GET web request, arrival of an email, saving of a file or modification to a database. Connect and communicate via XML, TCP/IP, UDP or HTTP. We support JSON, C#, SOAP messages.



### Avoid production stoppages because of printer errors

Sometimes things go wrong with printers. They go offline. They run out of ink or media. Queues pause unexpectedly. BarTender seamlessly manages failover and printer redirects to keep your labeling in production.



### Give your print operators an intuitive user experience

The BarTender Integration Builder live preview wizard helps you set up dynamic forms so the print operator can easily search and select records and incorporate print-time input.



### Maintain your current system's look and feel

BarTender can be integrated so it doesn't “show” in your ERP or WMS, providing a seamless experience. Many labeling operators aren't aware that BarTender is behind the scenes administering access, integrating data into the labeling process, calculating and generating barcodes and RFID, and capturing labeling audit trails for regulatory compliance.



### Everything you need for enterprise labeling, no hidden costs

Our Enterprise Edition comes complete with all features and companion applications. BarTender's native support for XML means there's no extra API required to connect your label system to your data — no custom coding required, no hidden charges. Even Standard Maintenance and Support are free for the first year.



# BarTender®

BY SEAGULL SCIENTIFIC

Create and automate labels, barcodes and more



labels



barcodes



RFID



cards

Download BarTender at  
[www.SeagullScientific.com](http://www.SeagullScientific.com)

**Americas:**  
Sales@SeagullScientific.com  
+1 425 641 1408

**EMEA:**  
EMEA\_Sales@SeagullScientific.com  
+34 91 198 4600

**APAC:**  
AsiaSales@SeagullScientific.com  
+886 70 1018 4700

**Japan:**  
JapanSales@SeagullScientific.com  
+81 3 4589 5400

**SAP® Certified**  
Integration with SAP Applications



[www.SeagullScientific.com](http://www.SeagullScientific.com)

© 2020 Seagull Scientific, Inc. BarTender, Intelligent Templates, Drivers by Seagull, the BarTender logo, and the Drivers by Seagull logo are trademarks or registered trademarks of Seagull Scientific, Inc. All other trademarks are the property of their respective owners. PRT 0003\_EN\_0320