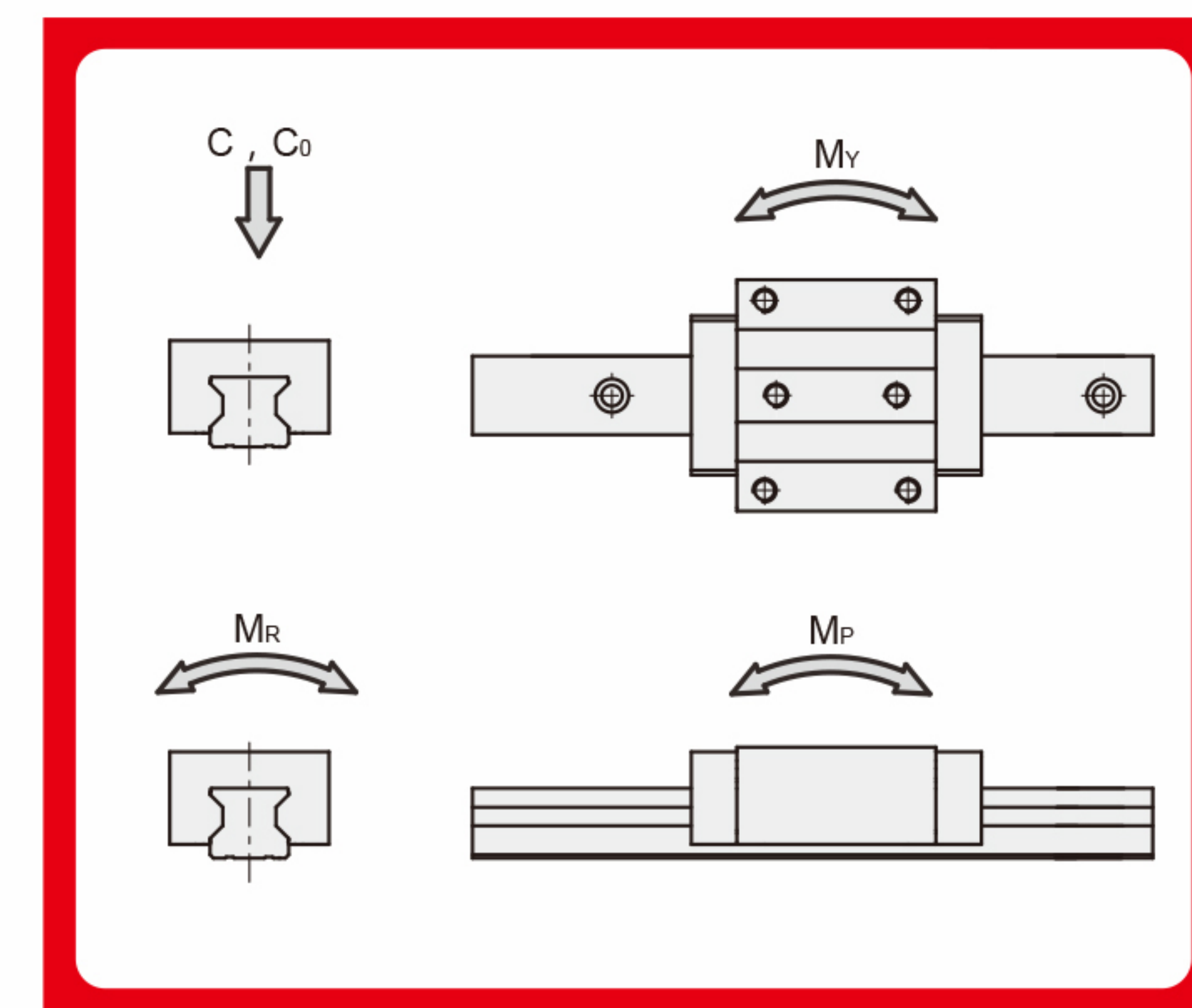
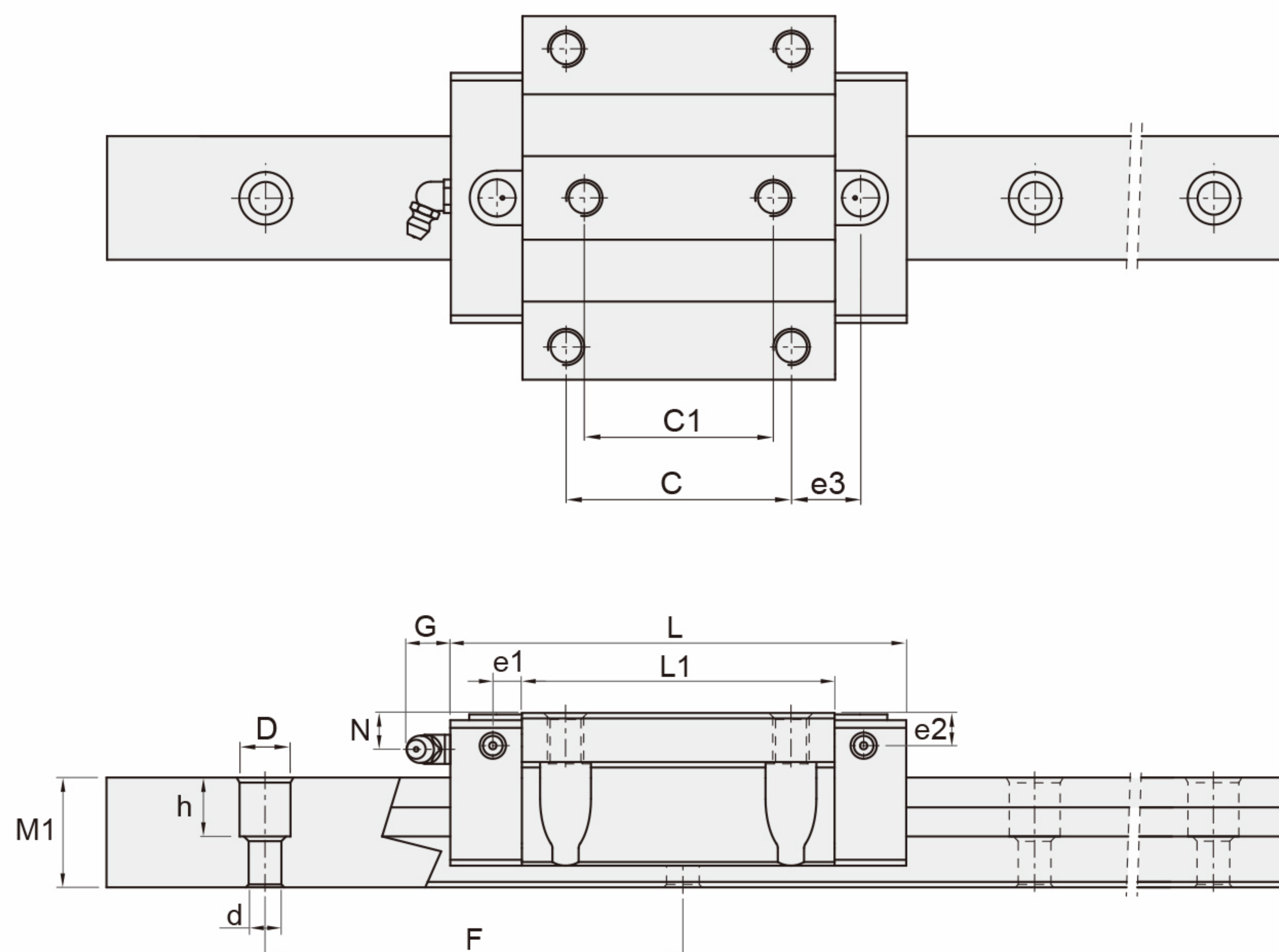
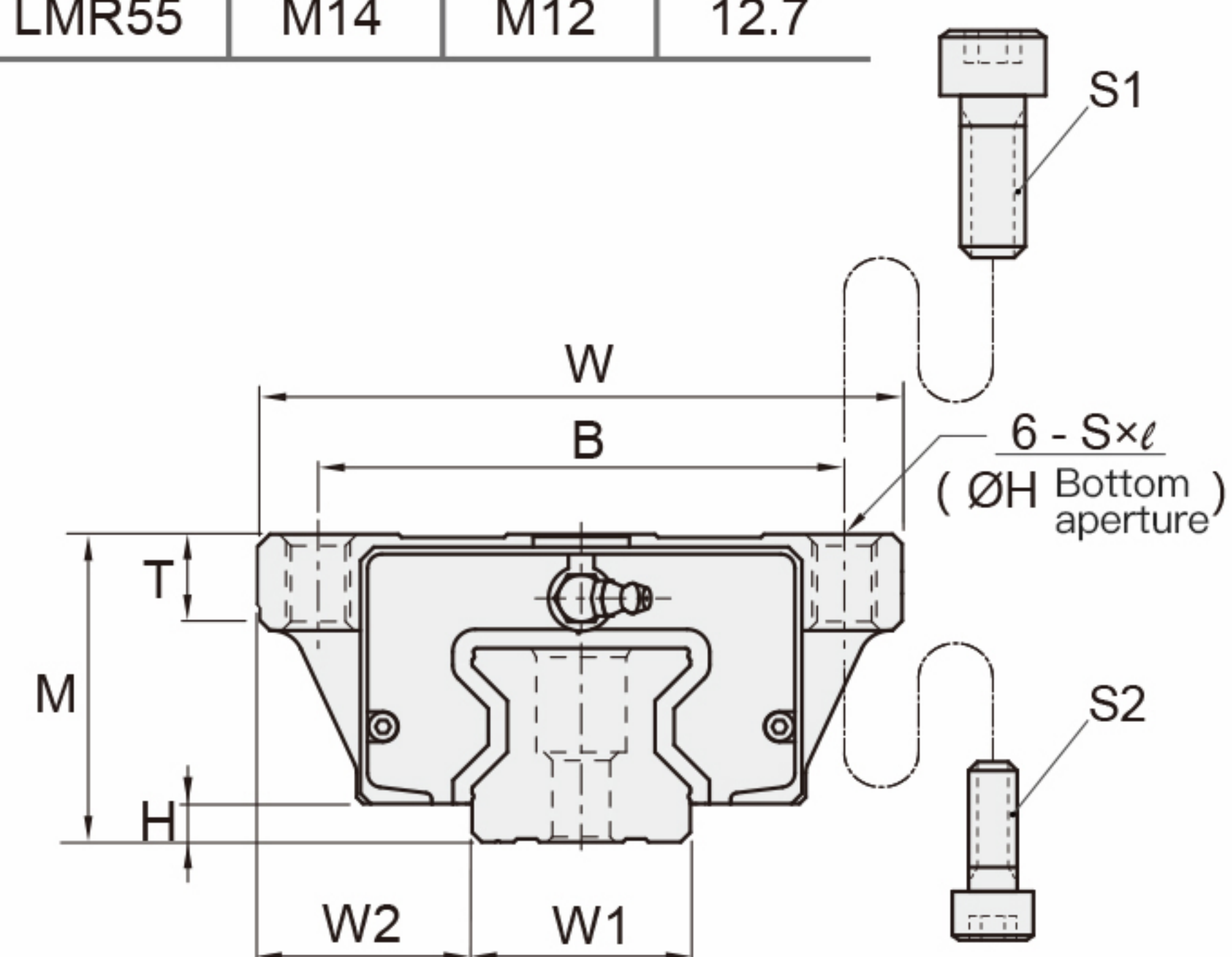


ROLLER LINEAR GUIDE

LMR...C/LC Model Size Chart

Model	Bolt specification		Bottom aperture
	S1	S2	H
LMR25	M8	M6	6.9
LMR30	M10	M8	8.6
LMR35	M10	M8	8.6
LMR45	M12	M10	10.4
LMR55	M14	M12	12.7

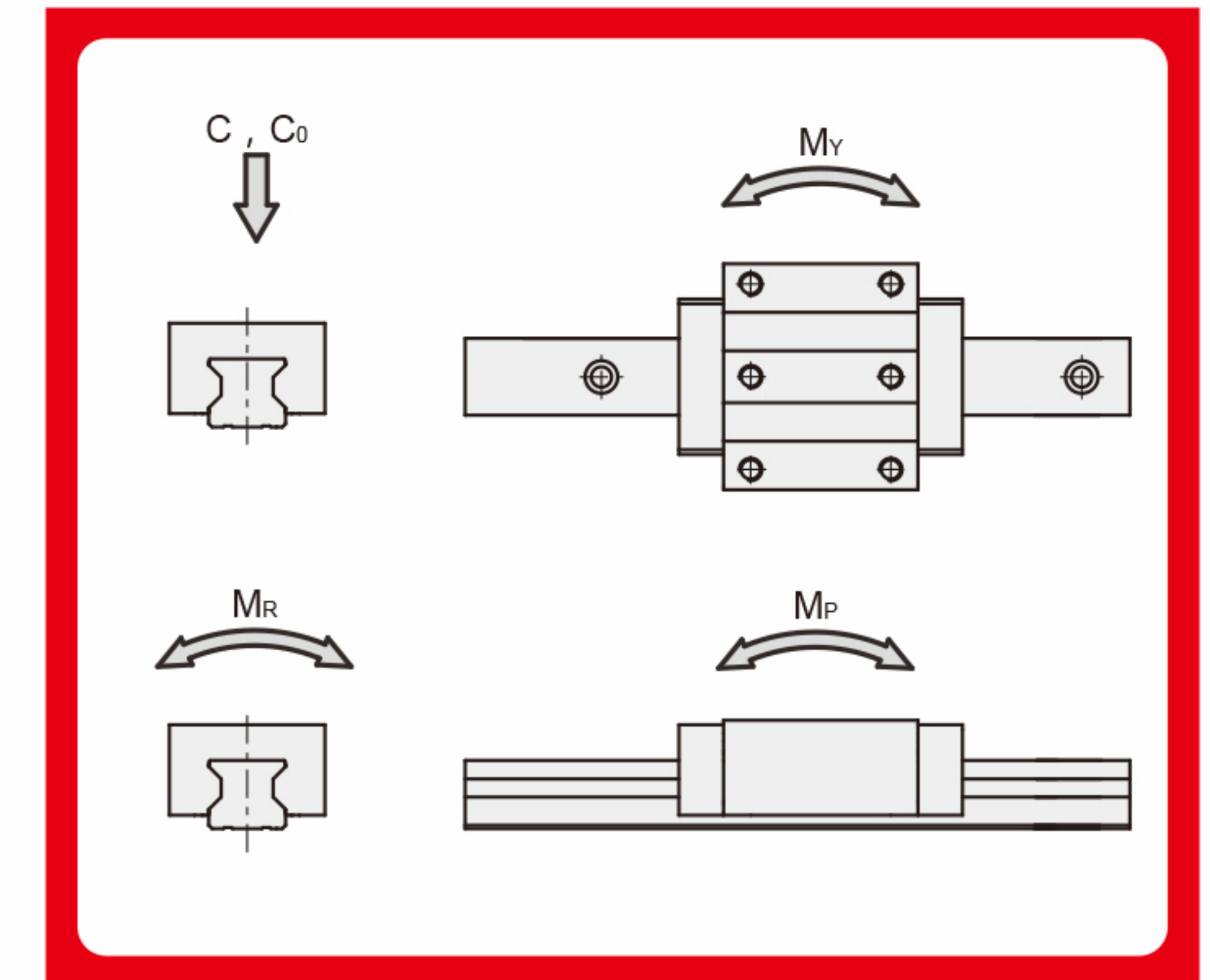
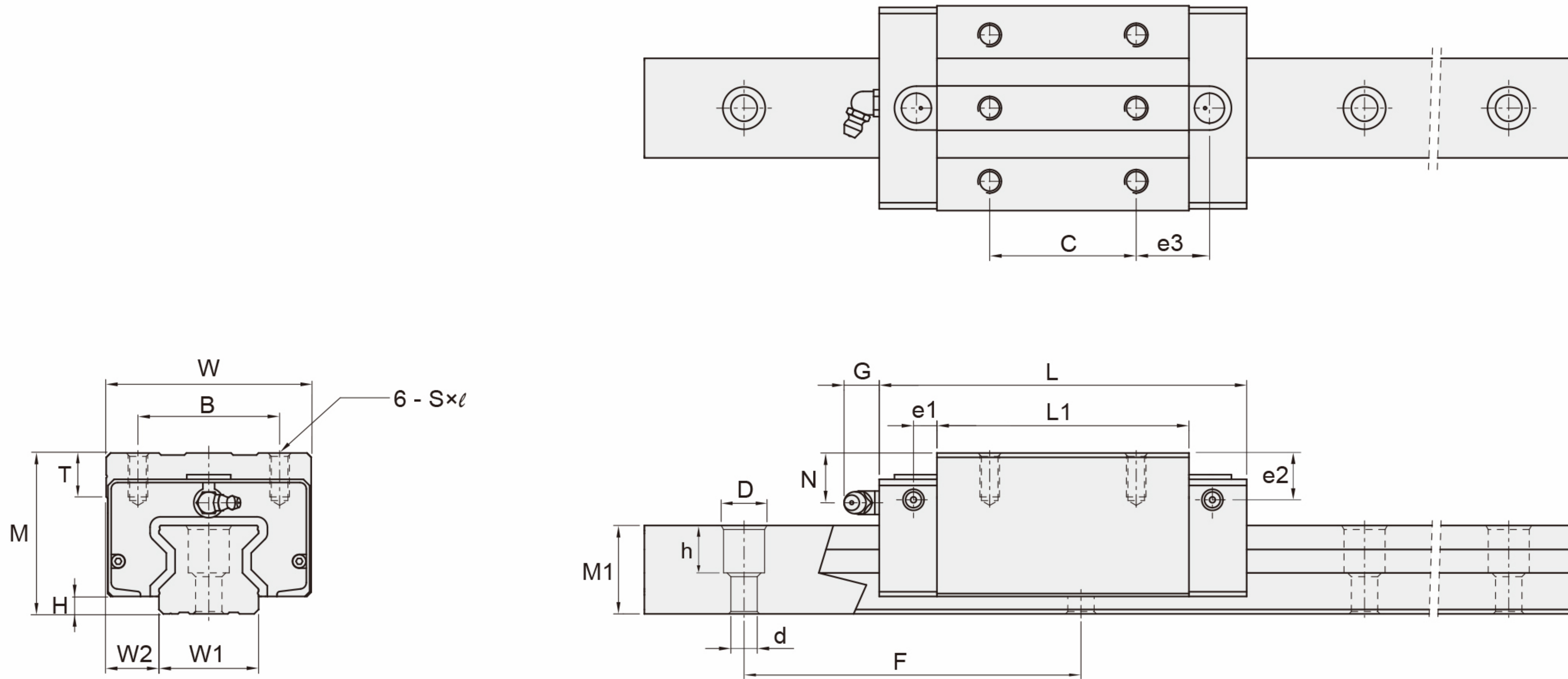


Model	Combined Size			Slider Size													Rail size			Basic load rating		Rated static torque			Quality			
	High	Wide	Length	B	C	C1	Mounting Holes S×ℓ	L1	T	H	N	e1	e2	e3	G	Nozzle Specification	Slider Size W1	W2	High	Pitch	Mounting bolt holes	Dynamic load C KN	Static load C0 KN	Mp (KN·m)	My (KN·m)	Mr (KN·m)	Slider Kg	Guide Kg/m
	M	W	L																M1	F	D×h×d							
LMR25C	36	70	101.2	57	45	40	M8×10	65.2	8	5	6.6	7.5	6.5	17.1	15	M6×0.75	23	23.5	23.6	30	11×9×7	26.6	60.6	0.59	0.59	0.74	0.68	3.16
LMR25LC	36	70	117.2	57	45	40	M8X10	81.2	8	5	6.6	7.5	6.5	25.15	15	M6X0.75	23	23.5	23.6	30	11X9X7	30.9	73.3	0.85	0.85	0.90	0.85	3.16
LMR30 C	42	90	113.1	72	52	44	M10X10	71.5	8	5.8	7.2	7.5	7.3	16.75	15	M6×0.75	28	31	28	40	14×12×9	39.6	82.5	0.85	0.85	1.26	1.19	4.4
LMR30LC	42	90	135	72	52	44	M10×10	93.4	8	5.8	7.2	7.5	7.3	28	15	M6×0.75	28	31	28	40	14×12×9	51.3	115.5	1.64	1.64	1.76	1.45	4.4
LMR35 C	48	100	129	82	62	52	M10X13	86	10	6	10	8	9	19	15	M6×0.75	34	33	30.2	40	14×12×9	49.4	110.0	1.49	1.49	2.01	1.61	6.23
LMR35 LC	48	100	154.8	82	62	52	M10×13	111.8	10	6	10	8	9	31.9	15	M6×0.75	34	33	30.2	40	14×12×9	58.8	137.5	2.30	2.30	2.51	2.13	6.23
LMR45 C	60	120	153	100	80	60	M12×15	107	10	8	20	8.5	10	20.5	16.5	PT 1/8	45	37.5	38	52.5	20×17×14	88.3	213.5	3.56	3.56	5.00	3.04	10.23
LMR45 LC	60	120	184.2	100	80	60	M12×15	138.2	10	8	20	8.5	10	36.1	16.5	PT 1/8	45	37.5	38	52.5	20×17×14	109.4	281.4	6.12	6.12	6.59	3.85	10.23
LMR55 LC	70	140	230.1	116	95	70	M14×18	174.5	12	10	12	9	20	46.75	16.5	PT 1/8	53	43.5	44	60	23×20×16	154.6	414.4	10.82	10.82	11.42	6.43	14.45

Unit (mm)

ROLLER LINEAR GUIDE

LMR...H/LH Model Size Chart



Unit (mm)

Model	Combined Size			Slider Size												Rail size			Basic load rating		Rated static torque			Quality			
	High	Wide	Length	B	C	Mounting Holes S×ℓ	L1	T	H	N	e1	e2	e3	G	Nozzle Specification	Slider Size		High	Pitch	Mounting bolt holes	Dynamic load	Static load	M _p (KN·m)	M _y (KN·m)	M _r (KN·m)	Slider Kg	Guide Kg/m
	M	W	L													W1	W2										
LMR25H	40	48	101.2	35	35	M6×8	65.2	8	5	10.6	7.5	10.5	22.1	15	M6×0.75	23	12.5	23.6	30	11×9×7	26.6	60.6	0.59	0.59	0.74	0.61	3.16
LMR25LH	40	48	117.2	35	50	M6X8	81.2	8	5	10.6	7.5	10.5	22.65	15	M6X0.75	23	12.5	23.6	30	11X9X7	30.9	73.3	0.85	0.85	0.90	0.76	3.16
LMR30 H	45	60	113.1	40	40	M8X10	71.5	9	5.8	10.2	7.5	10.3	22.75	15	M6×0.75	28	16	28	40	14×12×9	39.6	82.5	0.85	0.85	1.26	0.94	4.4
LMR30LH	45	60	135	40	60	M8×10	93.4	9	5.8	10.2	7.5	10.3	24	15	M6×0.75	28	16	28	40	14×12×9	51.3	115.5	1.64	1.64	1.76	1.15	4.4
LMR35 H	55	70	129	50	50	M8X12	86	15	6	17	8	16	25	15	M6×0.75	34	18	30.2	40	14×12×9	49.4	110.0	1.49	1.49	2.01	1.55	6.23
LMR35 LH	55	70	154.8	50	72	M8×12	111.8	15	6	17	8	16	26.9	15	M6×0.75	34	18	30.2	40	14×12×9	58.8	137.5	2.30	2.30	2.51	2.07	6.23
LMR45 H	70	86	153	60	60	M10×17	107	12	7.8	20	8.5	20	30.5	16.5	PT 1/8	45	20.5	38	52.5	20×17×14	88.3	213.5	3.56	3.56	5.00	3.07	10.23
LMR45 LH	70	86	184.2	60	80	M10×17	138.2	12	7.8	20	8.5	20	36.1	16.5	PT 1/8	45	20.5	38	52.5	20×17×14	109.4	281.4	6.12	6.12	6.59	3.87	10.23
LMR55 LH	80	100	230.1	75	95	M12×18	174.5	17	10	22	9	20	46.75	16.5	PT 1/8	53	23.5	44	60	23×20×16	154.6	414.4	10.82	10.82	11.42	5.94	14.45